

MidAIR Forum, Nov 15, 2019, Columbia MO

When the Undergraduate Admission Policy Does Not Apply

Ronald D. Thompson, PhD, Sr. Research Analyst
Office of Institutional Research
University of Missouri System



When the Undergraduate Admission Policy Does Not Apply

Ronald D. Thompson, PhD, UM Sr. IR Analyst

Abstract:

The undergraduate admission policy of a large, public, Midwestern university is based on an applicant's ACT percentile rank, high school graduation class percentile rank, and whether or not the applicant has completed a suite of high school core courses. This presentation discusses how this policy might be altered to apply to applicants who do not have these three admissions policy components.

When the Undergraduate Admission Policy Does Not Apply

Ronald D. Thompson, PhD, UM Sr. IR Analyst

Outline:

1. Intro: UM Undergraduate Admission Policy
2. The issue
3. The implication
4. “Legacy” solution (Dr. [Joe Saupe](#), c. 2003)
5. Possible other solutions
6. Summary and conclusion

UM Admission Policy for FTC, Full-time, Degree-seeking U/G.

***** Basic *****

Automatic admission to UM if:

- (a) took ACT/SAT, (b) completed UM's HS core course requirements, and (c) graduated *recently* from an accredited high school, ***and either***
- Score ≥ 24 on ACT, ***or***
- Satisfy "120 Rule" ($\%ACT + \text{HS Grad Class \%Rank} \geq 120$), ***or***
- Grad from a *ranking* MO high school & HS Grad Class $\%Rank \geq 90$, ***or***
- Grad from a *non-ranking* MO high school & HS Core Course GPA $\geq 3.5/4.0$.

UM's HS Core Course Requirements

1. Took \geq 4 yrs of HS English
2. Took \geq 4 yrs of HS Math
3. Took \geq 3 yrs of HS Science
4. Took \geq 3 yrs of HS Social Studies
5. Took \geq 1 yr of HS Visual/Performing Arts
6. Took \geq 2 yrs of the same HS Foreign Language

The Issue

UM FT, DS, FTC, undergraduates, recent grad,
took UM-req HS core courses, took ACT/SAT.

	FS2009	FS2014	FS2019
Have HS %Rank	5,226	4,673	3,480
Do NOT	1,201 18.7%	2,509 34.9%	2,810 44.7%
TOTAL	6,427	7,182	6,290

The Issue: A Closer Look

UM FT, DS, FTC, undergraduates, recent grad,
took UM-req HS core courses, took ACT/SAT.

***** Remove ACT \geq 24 *****

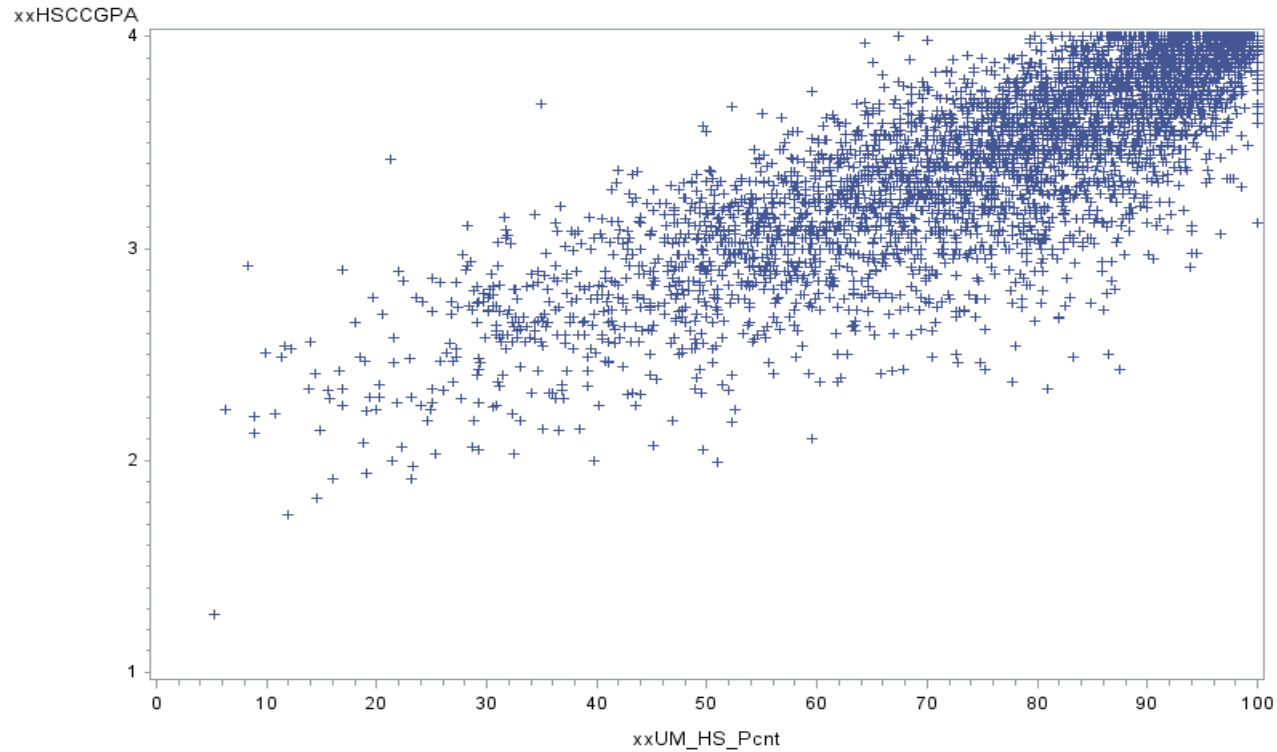
	FS2009	FS2014	FS2019
Have HS %Rank	1,527	1,263	928
Do NOT	277 15.4%	597 32.1%	745 44.5%
TOTAL	1,804	1,860	1,673

Legacy Approach: Dr. Joe Saupe c. 2003: Step #1

"120 Rule" Restated					
ACT	ACT %Rank (rptd 2018-19)	Minimum HS %Rank	TOTAL		
>= 24					
23	69	51	120		
22	63	57	120		
21	58	62	120		
20	51	69	120		
19	45	75	120		
18	39	81	120		
17	32	88	120		
16	26	94	120		
15	20	100	120		
14	14	106	120		

Legacy Approach: Dr. Joe Saupe c. 2003: Step #2

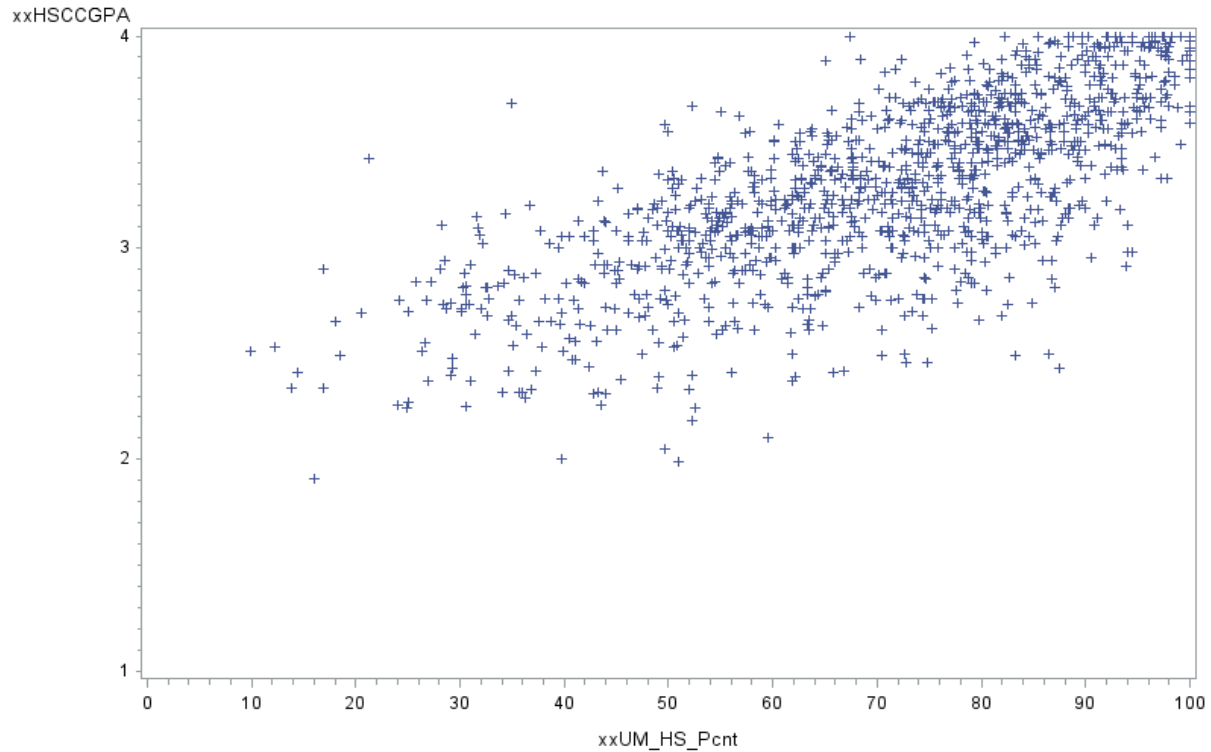
Fig 1. UM FT, DS, FTC U/G (and Recent, HS Core, ACT).
DESCR_TERM=FS2014



Legacy Approach: Dr. Joe Saupe c. 2003: Step #2

Fig 2. UM FT, DS, FTC U/G (and Recent, HS Core, ACT).

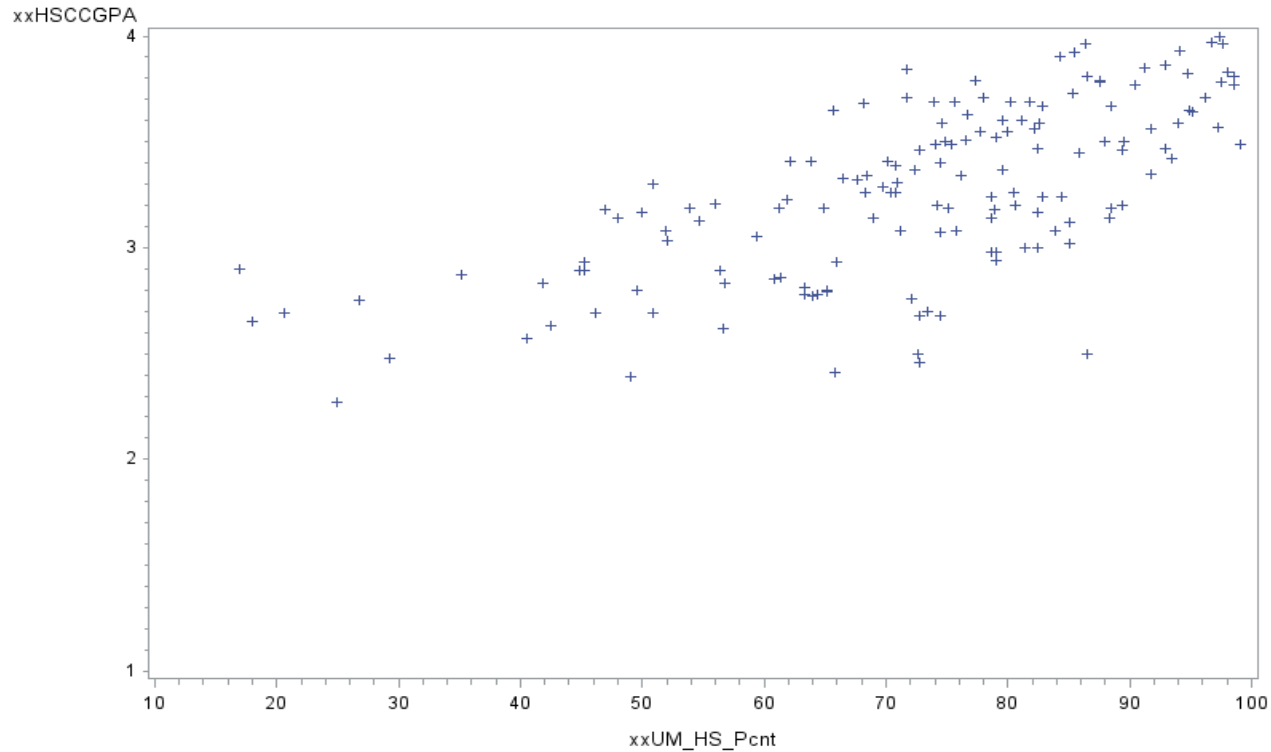
*** Remove 'ACT >= 24'. ***
DESCR_TERM=FS2014



Legacy Approach: Dr. Joe Saupe c. 2003: Step #2

Fig 3. UM FT, DS, FTC U/G (and Recent, HS Core, ACT).

***** Keep only 'ACT = 20'. *****
DESCR_TERM=FS2014



Legacy Solution: Dr. Joe Saupe c. 2003: Step #3

"120 Rule" Restated (GP, c. 2003)				ACT - HS CC GPA Sliding Scale (rec. by RDT, Aug 27, 2009)			
ACT		Minimum HS %Rank		ACT		Min HS CC GPA	
≥ 24				≥ 24			
23		48		23		2.80	
22		54		22		2.90	
21		62		21		3.05	
20		69		20		3.20	
19		78		19		3.35	
18		86		18		3.50	
17		94		17		3.60	

UM Admission Policy for FTC, Full-time, Degree-seeking U/G.

***** Full, official *****

Automatic admission to UM if:

- (a) took ACT/SAT, (b) completed UM's HS core course requirements, and (c) graduated *recently* from an accredited high school, **and either**
- Score ≥ 24 on ACT, **or**
- Satisfy "120 Rule" ($\%ACT + \text{HS Grad Class \%Rank} \geq 120$), **or**
- Grad from a *ranking* MO high school & $\text{HS Grad Class \%Rank} \geq 90$, **or**
- Grad from a non-ranking MO high school & HS Core Course GPA $\geq 3.5/4.0$.

UM FS2014 Cohort Success Results *(not official)*.

	N	%	Succeed	%	Retained	%	4-Yr Grad	%	4-Yr Prog	%
All UM										
3. Recently graduated HS, took UM-required HS core courses, and took ACT/SAT.	7,182	100.0	6,475	90.2	6,250	87.0	3,238	45.1	5,275	73.4
a. ACT \geq 24.	5,322	74.1	4,869	91.5	4,697	88.3	2,476	46.5	4,041	75.9
b. (ACT% + HS %Rank) \geq 120.	916	12.8	819	89.4	773	84.4	407	44.4	633	69.1
c. MO HS grad, and (Top 10% of HS grad class or HS Core GPA \geq 3.5).	88	1.2	84	95.5	79	89.8	41	46.6	64	72.7
d. Satisfy ACT - HS %Rank sliding scale (c. 2003).	29	0.4	27	93.1	23	79.3	15	51.7	22	75.9
e. No HS %Rank, and satisfy ACT - HS core course GPA sliding scale (Aug 2009).	327	4.6	300	91.7	296	90.5	173	52.9	247	75.5
x. OTHERS	500	7.0	376	75.2	382	76.4	126	25.2	268	53.6

Alternative Approaches when HS %Rank is Missing (Research in Progress)

1. Regression ($HSCCGPA = UM_HS_Pcnt, ACT$). Then given ACT, estimate min HSCCGPA.
2. Logistic ($SUCCEED = HSCCGPA, ACT$). Then given ACT, and stated desired success probability, estimate min HSCCGPA.
3. Logistic ($RETAINED = HSCCGPA, ACT$). Then given ACT, and stated desired success probability, estimate min HSCCGPA.
4. Logistic ($GRAD4 = HSCCGPA, ACT$). Then given ACT, and stated desired success probability, estimate min HSCCGPA.
5. Logistic ($PROG4 = HSCCGPA, ACT$). Then given ACT, and stated desired success probability, estimate min HSCCGPA.

Summary & Conclusion

1. Saw pattern of increasing no. of entering U/G students w/o HS Grad Class %Rank, ...
2. ... but UM U/G admissions policy depends on HS %Rank!
3. Discussed UM's "legacy" solution (Dr. [Joe Saupe](#)).
4. Described on-going research into alternative approaches. These approaches are more technical, are motivated by student success, and promise to provide "better" solutions in that estimation/prediction errors can be generated.

QUESTIONS

END



University of Missouri System

COLUMBIA | KANSAS CITY | ROLLA | ST. LOUIS