

**The 2020-2021 Report of Degrees Awarded
by the University of Missouri**

Randy Sade
Senior Research Analyst

Office of Institutional Research
University of Missouri System

August 2021

UM-IR 2021, Report 1

<https://www.umsystem.edu/ums/institutional-effectiveness/ir>

The 2020-2021 Report of Degrees Awarded by the University of Missouri

This report includes graphs and tables of degrees awarded by each campus since FY 2012. The first table provides a summary of degrees by level for each campus, while the second table series gives the number of awards by the colleges of each campus. The *Department Detail Summary* reflects the number of degrees awarded by academic department. These tables also show the average number of degrees over a 3, 5, & 10-year period and the percent change in FY 2021 that is relative to the 10-year average.

Notes Regarding Use of the Report:

- The official annual reporting period is from July 1 to June 30 of the following calendar year. For example, FY21 includes summer and fall graduates from 2020 and the spring graduates of 2021.
- Please note the axis scale range when considering graphs. It may change from campus to campus.
- Previous year's tables may differ because tables in the report have been changed from the use of running averages to 3-, 5-, and 10-year averages.
- This report includes a 10-year average as related to FY 2021.
- Source for this report is the printed Completions Report.

Technical Notes for Use with the Report:

Footnotes

- Footnotes are of the utmost importance in reading tables in the appendix.

Name Changes

- If a program name changes, the report history is changed to reflect the new name and is footnoted.
- If a degree name or description is changed, the report history is changed to the new description and is footnoted.
- If a department name changes, the report history is changed to the new description and NO footnotes are made.
- If a school or college changes, the report history is changed to the new description and NO footnotes are made.

Program Moves

- If a program moves to another department or school, the data are reported as is – that is, report history is not changed and new data are reported in the new department. A new footnote is added, i.e., program is moving. Eventually – when there are no more degrees for the old department, the old department is hidden in the report.

- If a program moves to another school or college, the data are reported as is – that is, report history is not changed and new data are reported in the new school or college. A footnote is added, i.e., program is moving. Eventually – when there are no more degrees for the old program, the former program is hidden in the report.

Figure 1.0: Rate of Change in Total Degrees & Certificates Awarded for the University of Missouri System, since 2012

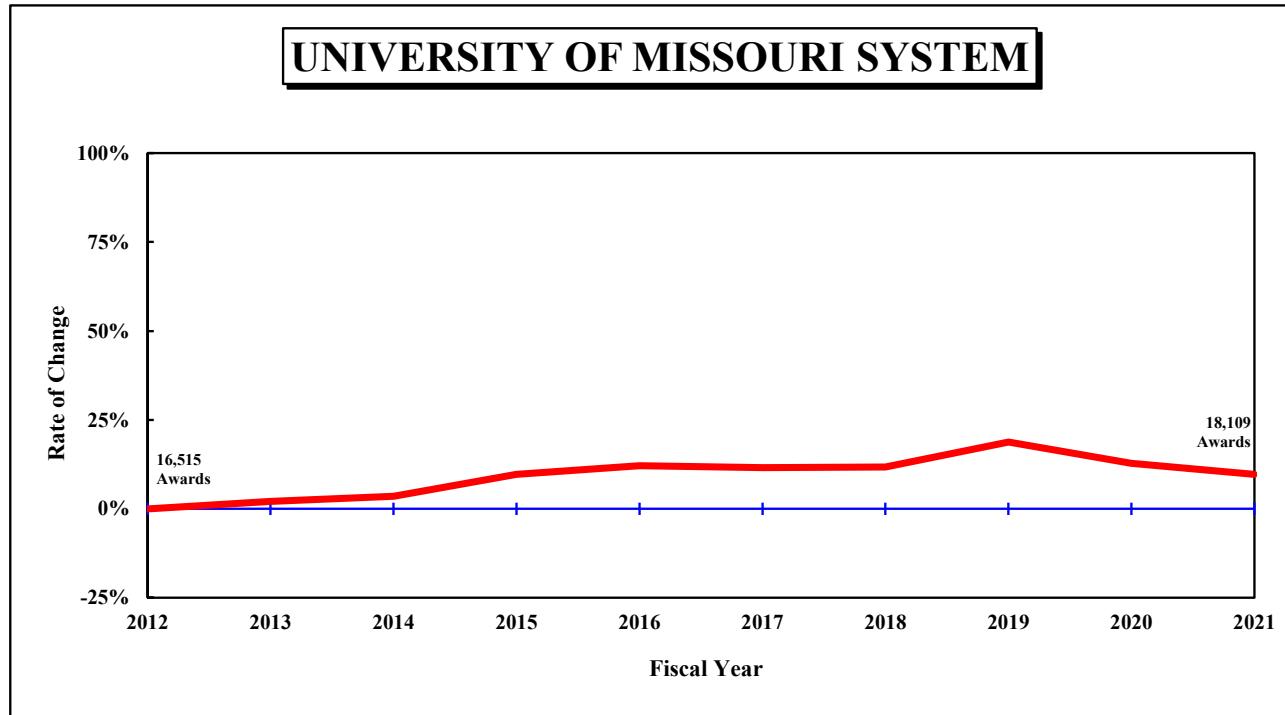


Table 1.0: Degrees and Certificates Awarded for the University of Missouri System, July 1, 2011 through June 30, 2021

DEGREE	FY	FY	FY	FY	FY	FY	FY	FY	FY	FY	3-Year	Average 5-Year	10-Year	Change in FY21 relative to the 10-Year Avg.
	2012	2013	2014	2015	2016	2017	2018	2019	2020	2021				
UNIVERSITY OF MISSOURI SYSTEM														
Undergrad. Certificate	2	2	23	55	44	56	66	1,869	1,538	1,370	1,592.3	979.8	502.5	173%
Bachelors	10,317	10,543	10,733	11,360	11,654	11,546	11,669	11,401	10,855	10,238	10,831.3	11,141.8	11,031.6	-7%
Graduate Certificate	623	781	740	780	839	869	1,047	1,026	926	1,017	989.7	977.0	864.8	18%
First Professional	790	847	837	876	833	829	832	882	899	953	911.3	879.0	857.8	11%
Masters	4,069	3,918	4,013	4,204	4,330	4,217	3,956	3,577	3,528	3,657	3,587.3	3,787.0	3,946.9	-7%
Education Specialist	104	115	113	122	100	93	67	106	125	130	120.3	104.2	107.5	21%
Doctorate	610	660	640	712	720	816	818	754	746	744	748.0	775.6	722.0	3%
Total, All Awards	16,515	16,866	17,099	18,109	18,520	18,426	18,455	19,615	18,617	18,109	18,780.3	18,644.4	18,033.1	0%

Figure 1.1: Rate of Change in Total Degrees & Certificates Awarded at the University of Missouri–Columbia, since 2012

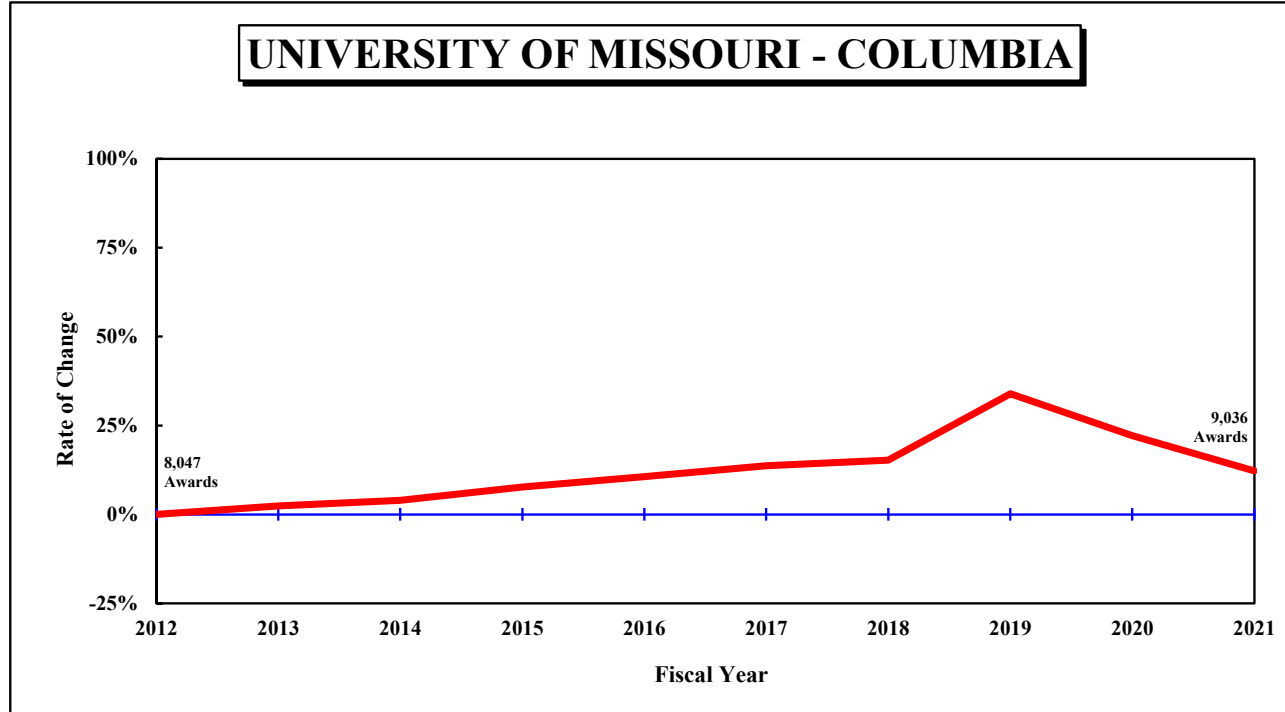


Table 1.1: Degrees and Certificates Awarded at the University of Missouri–Columbia, July 1, 2011 through June 30, 2021

DEGREE	FY	FY	FY	FY	FY	FY	FY	FY	FY	FY	3-Year	Average 5-Year	10-Year	Change in FY21 relative to the 10-Year Avg.
	2012	2013	2014	2015	2016	2017	2018	2019	2020	2021				
UNIVERSITY OF MISSOURI - COLUMBIA														
Undergrad. Certificate								1,761	1,454	1,235	1,483.3	N/A	N/A	
Bachelors	5,528	5,692	5,769	5,995	6,283	6,331	6,512	6,314	5,641	5,114	5,689.7	5,982.4	5,917.9	-14%
Graduate Certificate	179	225	226	239	225	266	362	386	358	381	375.0	350.6	284.7	34%
First Professional	299	332	339	346	308	313	302	357	376	426	386.3	354.8	339.8	25%
Masters	1,631	1,514	1,580	1,571	1,619	1,684	1,562	1,473	1,562	1,423	1,486.0	1,540.8	1,561.9	-9%
Education Specialist	43	63	65	82	51	56	40	59	82	91	77.3	65.6	63.2	44%
Doctorate	367	411	390	435	416	500	501	426	359	366	383.7	430.4	417.1	-12%
Total, All Awards	8,047	8,237	8,369	8,668	8,902	9,150	9,279	10,776	9,832	9,036	9,881.3	9,614.6	9,029.6	0%

Figure 1.2: Rate of Change in Total Degrees & Certificates Awarded at the University of Missouri–Kansas City, since 2012

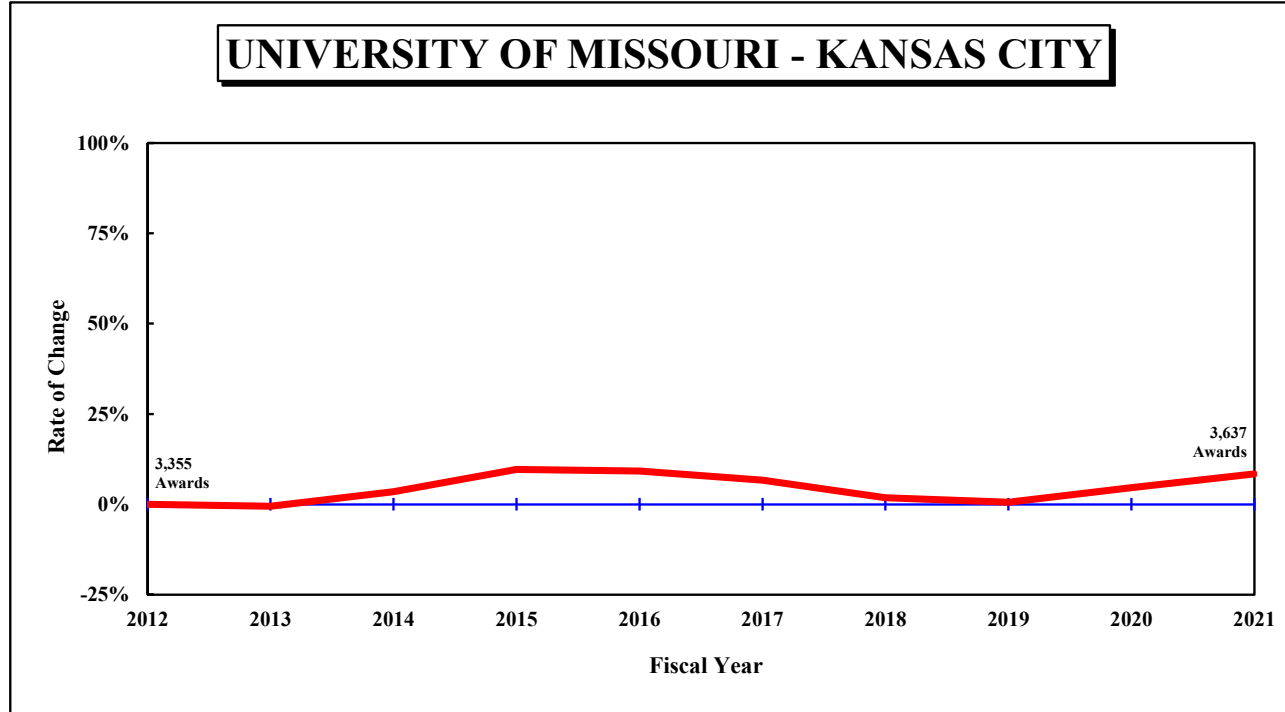


Table 1.2: Degrees and Certificates Awarded at the University of Missouri–Kansas City, July 1, 2011 through June 30, 2021

DEGREE	FY 2012	FY 2013	FY 2014	FY 2015	FY 2016	FY 2017	FY 2018	FY 2019	FY 2020	FY 2021	3-Year Average	5-Year Average	10-Year Average	Change in FY21 relative to the 10-Year Avg.
UNIVERSITY OF MISSOURI - KANSAS CITY														
Undergrad. Certificate				7	6	11	24	29	24	24	25.7	22.4	N/A	
Bachelors	1,749	1,759	1,803	1,812	1,741	1,824	1,753	1,778	1,903	1,808	1,829.7	1,813.2	1,793.0	1%
Graduate Certificate	29	33	33	50	71	48	54	64	53	72	63.0	58.2	50.7	42%
First Professional	444	475	459	489	480	473	491	486	477	480	481.0	481.4	475.4	1%
Masters	999	954	1,028	1,197	1,213	1,082	962	859	892	1,102	951.0	979.4	1,028.8	7%
Education Specialist	35	24	35	26	32	20	18	24	24	16	21.3	20.4	25.4	-37%
Doctorate	99	93	116	98	120	122	114	135	138	135	136.0	128.8	117.0	15%
Total, All Awards	3,355	3,338	3,474	3,679	3,663	3,580	3,416	3,375	3,511	3,637	3,507.7	3,503.8	3,502.8	4%

Figure 1.3: Rate of Change in Total Degrees & Certificates Awarded at the Missouri University of Science and Technology, since 2012

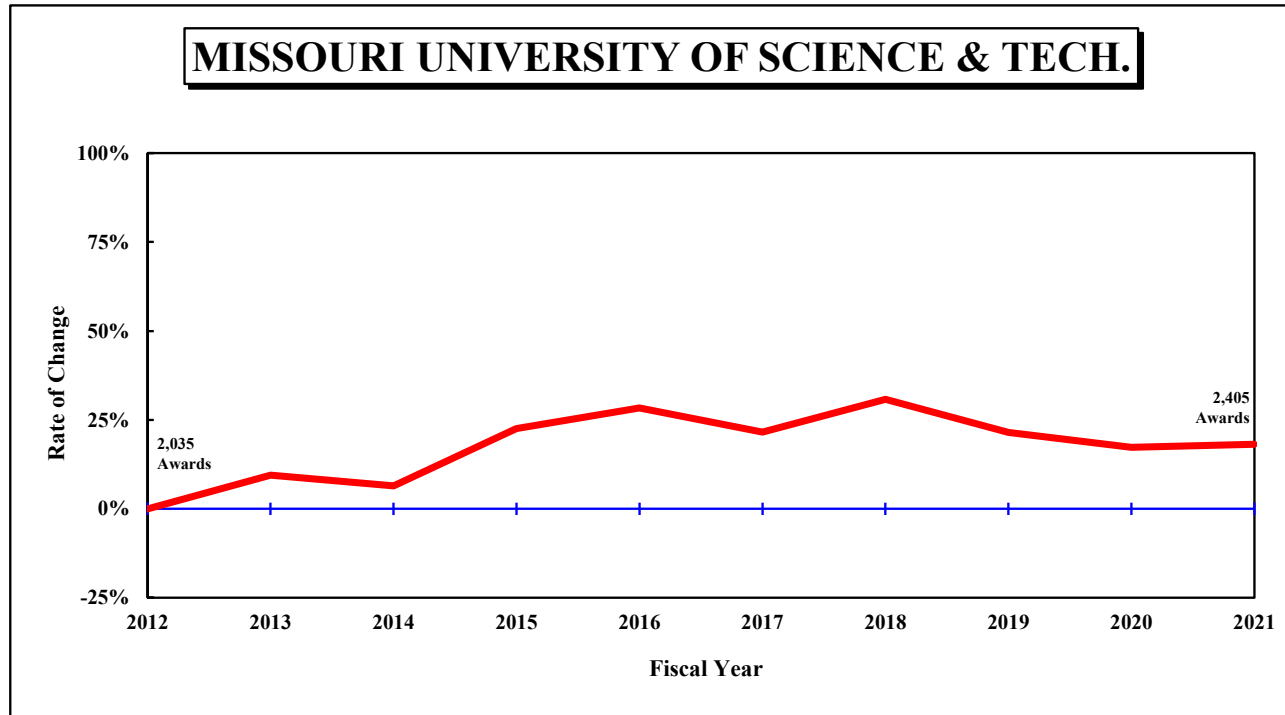


Table 1.3: Degrees and Certificates Awarded at the Missouri University of Science and Technology, July 1, 2011 through June 30, 2021

DEGREE	FY	FY	FY	FY	FY	FY	FY	FY	FY	FY	3-Year	Average 5-Year	10-Year	Change in FY21 relative to the 10-Year Avg.
	2012	2013	2014	2015	2016	2017	2018	2019	2020	2021				
MISSOURI UNIVERSITY OF SCIENCE AND TECHNOLOGY														
Undergrad. Certificate	2	0	3	14	9	8	7	11	8	18	12.3	10.4	8.0	125%
Bachelors	1,077	1,118	1,141	1,307	1,378	1,320	1,416	1,388	1,423	1,427	1,412.7	1,394.8	1,299.5	10%
Graduate Certificate	319	435	401	404	427	432	510	454	410	429	431.0	447.0	422.1	2%
Masters	567	579	551	675	688	625	613	517	427	413	452.3	519.0	565.5	-27%
Doctorate	70	95	70	95	109	88	116	101	119	118	112.7	108.4	98.1	20%
Total, All Awards	2,035	2,227	2,166	2,495	2,611	2,473	2,662	2,471	2,387	2,405	2,421.0	2,479.6	2,393.2	0%

Figure 1.4: Rate of Change in Total Degrees & Certificates Awarded at the University of Missouri–St. Louis, since 2012

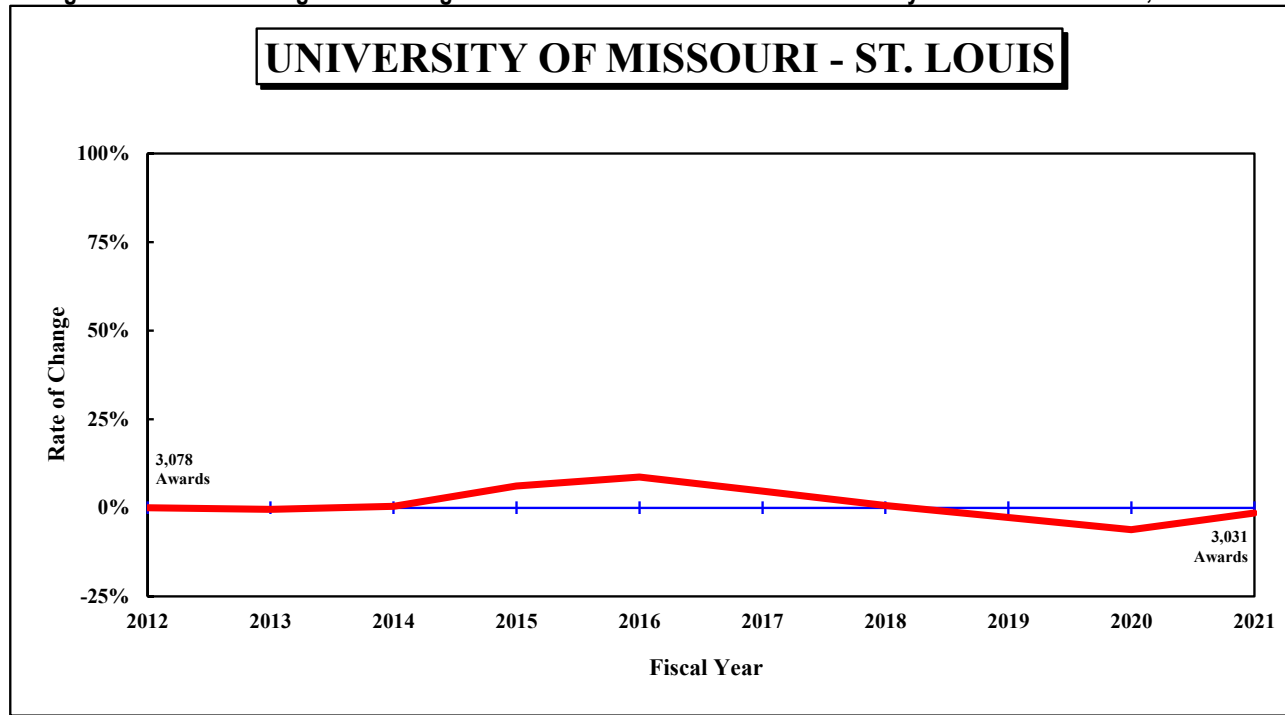


Table 1.4: Degrees and Certificates Awarded at the University of Missouri–St. Louis, July 1, 2011 through June 30, 2021

DEGREE	FY	FY	FY	FY	FY	FY	FY	FY	FY	FY	3-Year	Average 5-Year	10-Year	Change in FY21 relative to the 10-Year Avg.
	2012	2013	2014	2015	2016	2017	2018	2019	2020	2021				
UNIVERSITY OF MISSOURI - ST. LOUIS														
Undergrad. Certificate		2	20	34	29	37	35	68	52	93	71.0	57.0	N/A	
Bachelors	1,963	1,974	2,020	2,246	2,252	2,071	1,988	1,921	1,888	1,889	1,899.3	1,951.4	2,021.2	-7%
Graduate Certificate	96	88	80	87	116	123	121	122	105	135	120.7	121.2	107.3	26%
First Professional	47	40	39	41	45	43	39	39	46	47	44.0	42.8	42.6	10%
Masters	872	871	854	761	810	826	819	728	647	719	698.0	747.8	790.7	-9%
Education Specialist	26	28	13	14	17	17	9	23	19	23	21.7	18.2	18.9	22%
Doctorate	74	61	64	84	75	106	87	92	130	125	115.7	108.0	89.8	39%
Total, All Awards	3,078	3,064	3,090	3,267	3,344	3,223	3,098	2,993	2,887	3,031	2,970.3	3,046.4	3,107.5	-2%

Figure 2.0: Rate of Change in Total Degrees Awarded, since 2012

UNIVERSITY OF MISSOURI SYSTEM

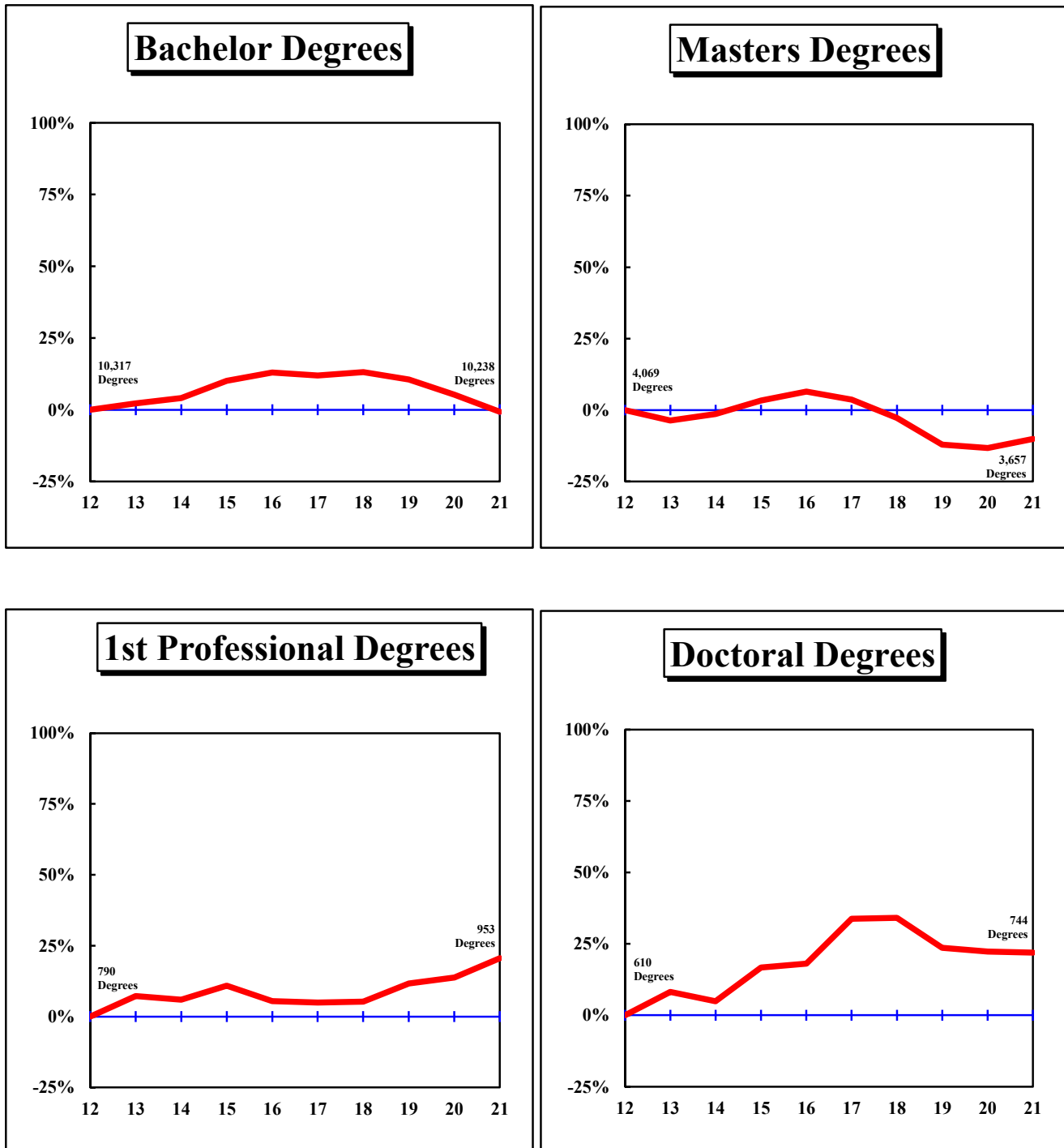


Figure 2.1: Rate of Change in Total Degrees Awarded by Campus, since 2012

UNIVERSITY OF MISSOURI-COLUMBIA

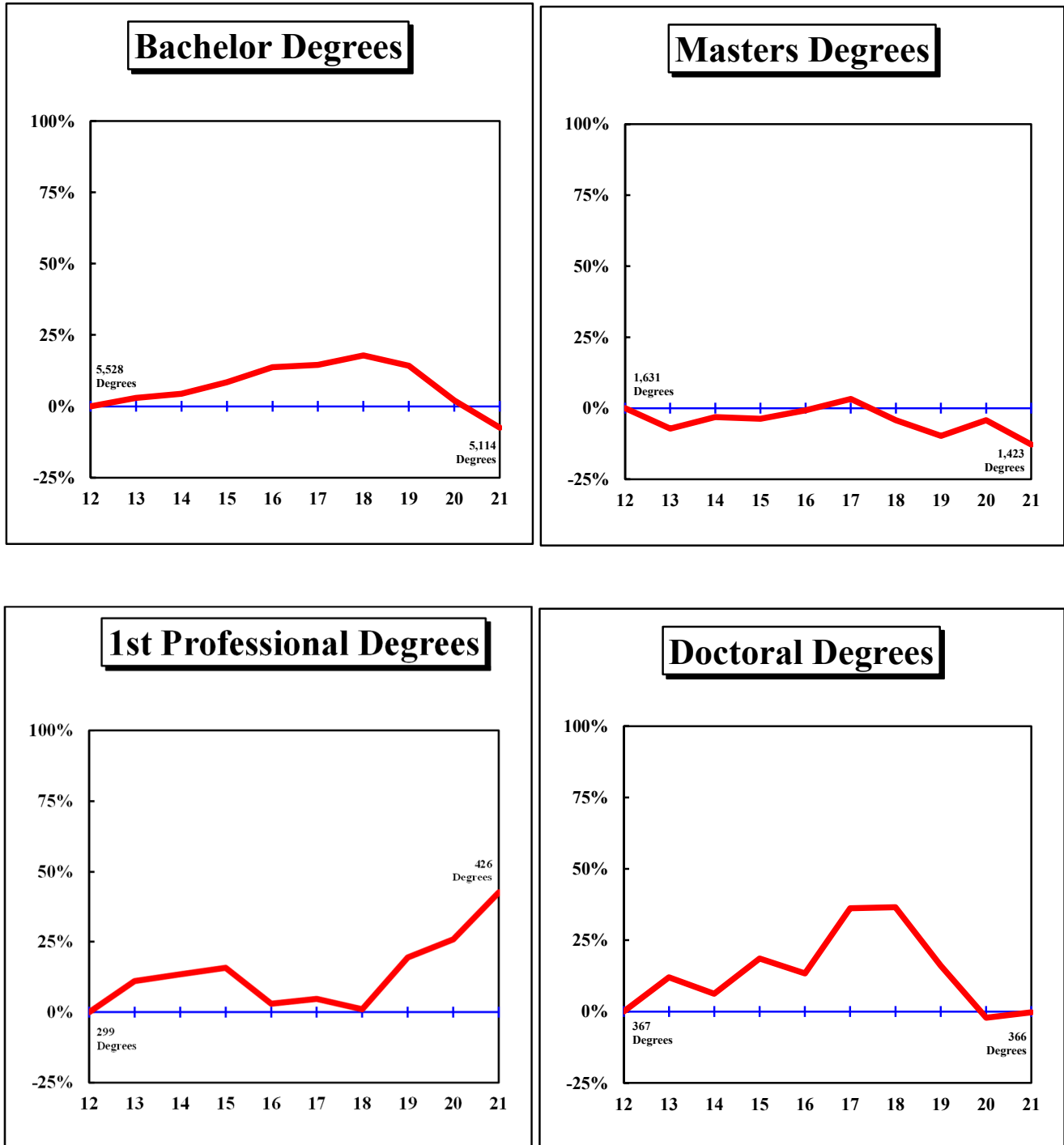


Figure 2.2: Rate of Change in Total Degrees Awarded by Campus, since 2012

UNIVERSITY OF MISSOURI-KANSAS CITY

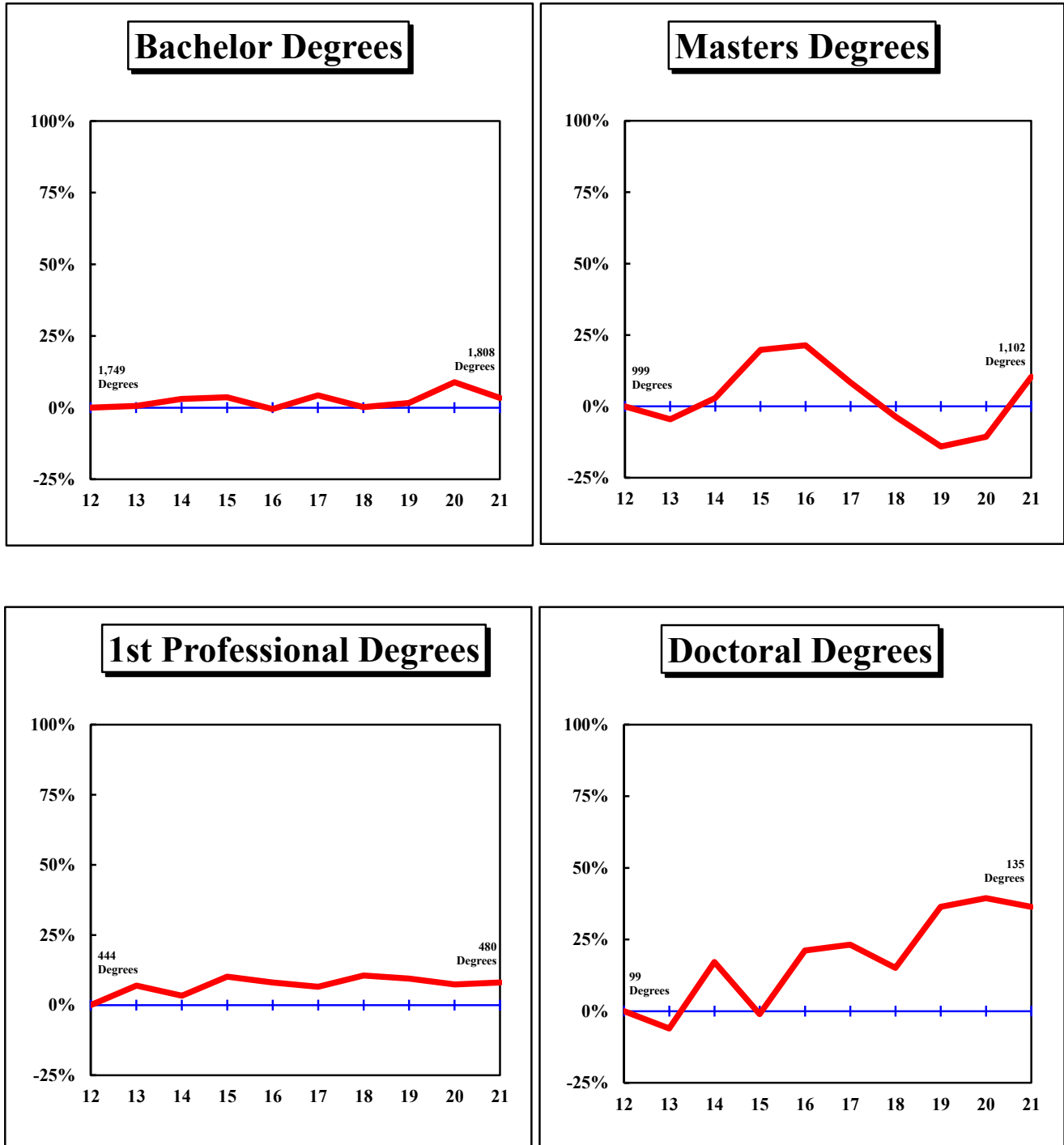


Figure 2.3: Rate of Change in Total Degrees Awarded by Campus, since 2012

MISSOURI UNIVERSITY OF SCIENCE AND TECHNOLOGY

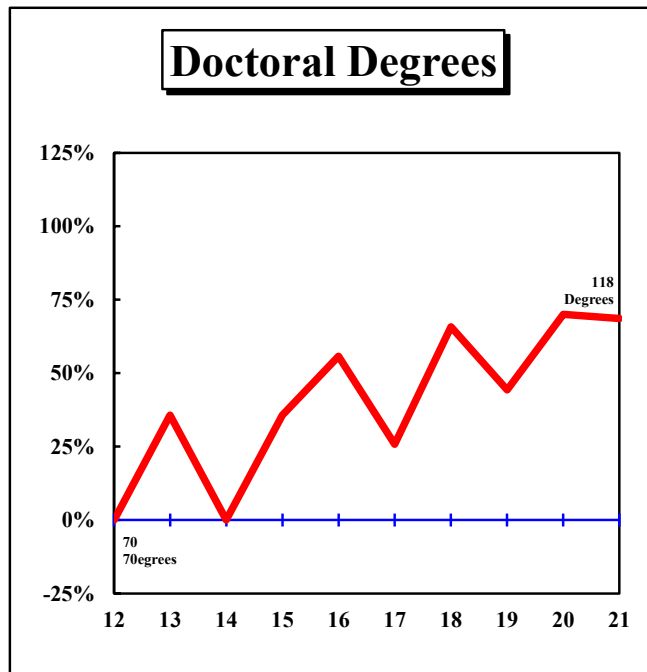
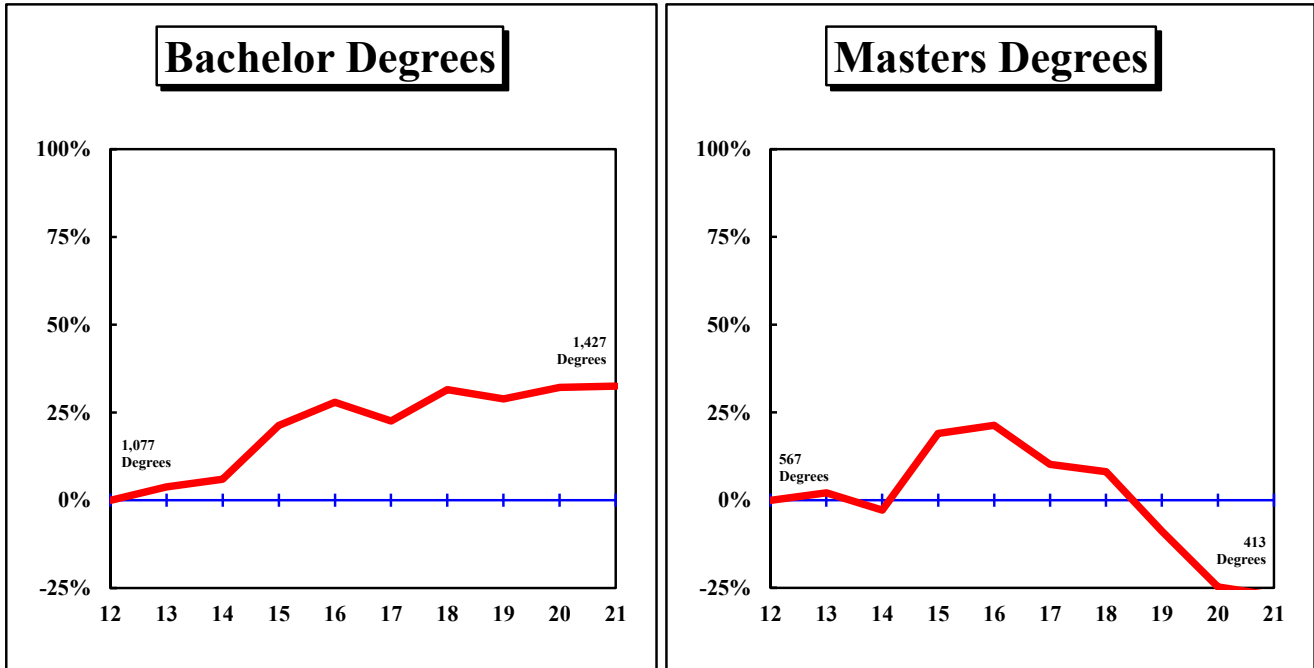


Figure 2.4: Rate of Change in Total Degrees Awarded by Campus, since 2012

UNIVERSITY OF MISSOURI–ST. LOUIS

