

**The 2019-2020 Report of Degrees Awarded  
by the University of Missouri**

Randy Sade  
Senior Research Analyst

Office of Institutional Research  
University of Missouri System

September 2020

UM-IR 2020, Report 1

<http://www.umsystem.edu/ums/fa/ir/>

# The 2019-2020 Report of Degrees Awarded by the University of Missouri

## Executive Summary

This report includes graphs and tables of degrees awarded by each campus since FY 2011. The first table provides a summary of degrees by level for each campus, while the second table series gives the number of awards by the colleges of each campus. The *Department Detail Summary* reflects the number of degrees awarded by academic department. These tables also show the average number of degrees over a 3, 5, & 10-year period and the percent change in FY 2020 that is relative to the 10-year average.

The highlights of the report from the Table 1 series include:

- The University of Missouri System awarded 18,617 degrees and certificates, a 5% growth in FY 2020 relative to the 10-year average.
- Relative to the 10-year average, the number of FY 2020 doctorate degrees for the University of Missouri System increased 6% and graduate certificates increased 13%.
- Comparing FY 2020 degrees to the 10-year averages, the most notable increases are: bachelors degrees awarded are up 8% at UM-Kansas City and 13% at Missouri S&T.
- First Professional degrees at UM-Columbia increased 15% when comparing FY 2020 to the 10-year average.
- Based on the 10-year averages, Graduate Certificates continues to grow in FY 2020 with a 36% increase at UM-Columbia and 15% increase at UM-Kansas City.

## Notes Regarding Use of the Report:

- The official annual reporting period is from July 1 to June 30 of the following calendar year. For example, FY20 includes summer and fall graduates from 2019 and the spring graduates of 2020.
- Please note the axis scale range when considering graphs. It may change from campus to campus.
- Previous year's tables may differ because tables in the report have been changed from the use of running averages to 3-, 5-, and 10-year averages.
- This report includes a 10-year average as related to FY 2020.
- Source for this report is the printed Completions Report.

## Technical Notes for Use with the Report:

### Footnotes

- Footnotes are of the utmost importance in reading tables in the appendix.

### Name Changes

- If a program name changes, the report history is changed to reflect the new name and is footnoted.
- If a degree name or description is changed, the report history is changed to the new description and is footnoted.
- If a department name changes, the report history is changed to the new description and NO footnotes are made.
- If a school or college changes, the report history is changed to the new description and NO footnotes are made.

### Program Moves

- If a program moves to another department or school, the data are reported as is – that is, report history is not changed and new data are reported in the new department. A new footnote is added, i.e., program is moving. Eventually – when there are no more degrees for the old department, the old department is hidden in the report.
- If a program moves to another school or college, the data are reported as is – that is, report history is not changed and new data are reported in the new school or college. A footnote is added, i.e., program is moving. Eventually – when there are no more degrees for the old program, the former program is hidden in the report.

Figure 1.0: Rate of Change in Total Degrees & Certificates Awarded for the University of Missouri System, since 2011

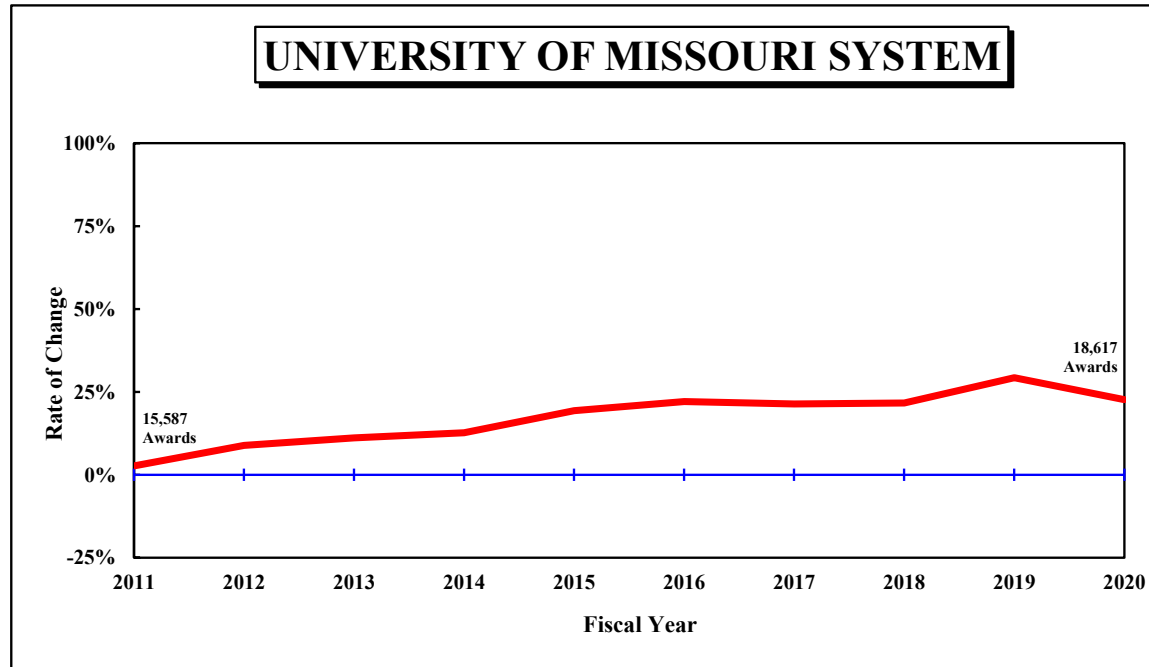


Table 1.0: Degrees and Certificates Awarded for the University of Missouri System, July 1, 2010 through June 30, 2020

DEGREE	FY	FY	FY	FY	FY	FY	FY	FY	FY	FY	3-Year	<u>Average</u>			Change in FY20 relative to the 10-Year Avg.
	2011	2012	2013	2014	2015	2016	2017	2018	2019	2020		5-Year	10-Year		
<b>UNIVERSITY OF MISSOURI SYSTEM</b>															
Undergrad. Certificate	4	2	2	23	55	44	56	66	1,869	1,538	1,157.7	714.6	365.9	320%	
Bachelors	9,699	10,317	10,543	10,733	11,360	11,654	11,546	11,669	11,401	10,855	11,308.3	11,425.0	10,977.7	-1%	
Graduate Certificate	539	623	781	740	780	839	869	1,047	1,026	926	999.7	941.4	817.0	13%	
First Professional	818	790	847	837	876	833	829	832	882	899	871.0	855.0	844.3	6%	
Masters	3,870	4,069	3,918	4,013	4,204	4,330	4,217	3,956	3,577	3,528	3,687.0	3,921.6	3,968.2	-11%	
Education Specialist	100	104	115	113	122	100	93	67	106	125	99.3	98.2	104.5	20%	
Doctorate	557	610	660	640	712	720	816	818	754	746	772.7	770.8	703.3	6%	
<b>Total, All Awards</b>	<b>15,587</b>	<b>16,515</b>	<b>16,866</b>	<b>17,099</b>	<b>18,109</b>	<b>18,520</b>	<b>18,426</b>	<b>18,455</b>	<b>19,615</b>	<b>18,617</b>	<b>18,895.7</b>	<b>18,726.6</b>	<b>17,780.9</b>	<b>5%</b>	

Figure 1.1: Rate of Change in Total Degrees & Certificates Awarded at the University of Missouri–Columbia, since 2011

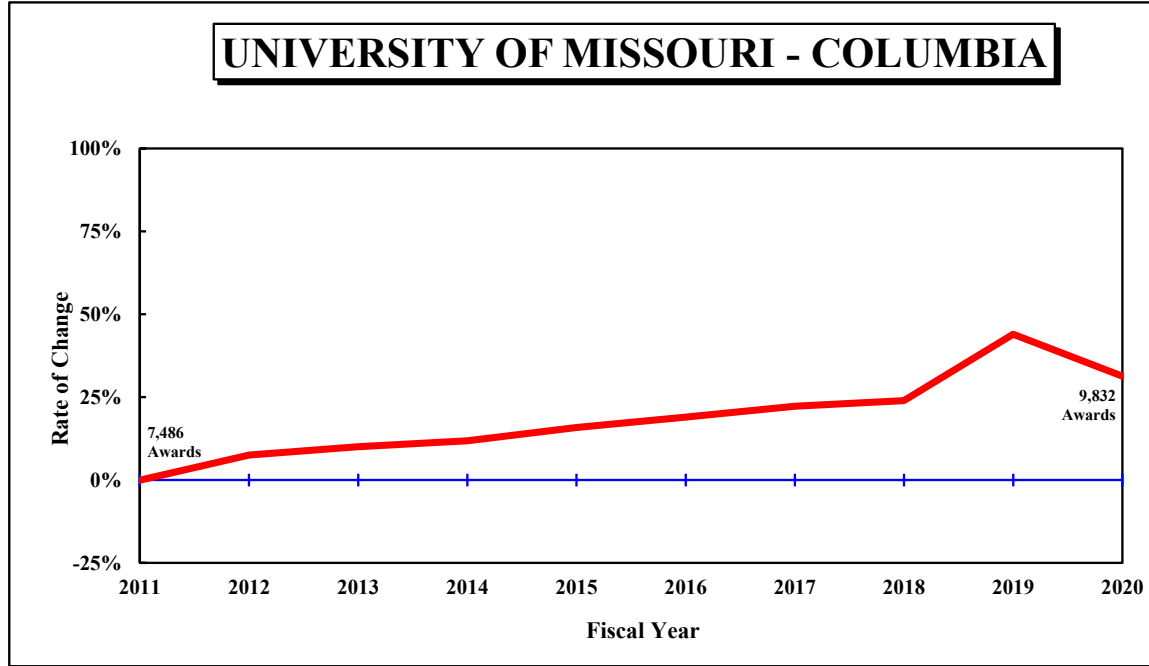


Table 1.1: Degrees and Certificates Awarded at the University of Missouri–Columbia, July 1, 2010 through June 30, 2020

DEGREE	FY	FY	FY	FY	FY	FY	FY	FY	FY	FY	<u>Average</u>			Change in FY20 relative to the 10-Year Avg.	
	2011	2012	2013	2014	2015	2016	2017	2018	2019	2020	3-Year	5-Year	10-Year		
<b>UNIVERSITY OF MISSOURI - COLUMBIA</b>															
Undergrad. Certificate										1,761	1,454	N/A	N/A	N/A	
Bachelors	5,087	5,528	5,692	5,769	5,995	6,283	6,331	6,512	6,314	5,641		6,155.7	6,216.2	5,915.2	-5%
Graduate Certificate	162	179	225	226	239	225	266	362	386	358		368.7	319.4	262.8	36%
First Professional	306	299	332	339	346	308	313	302	357	376		345.0	331.2	327.8	15%
Masters	1,513	1,631	1,514	1,580	1,571	1,619	1,684	1,562	1,473	1,562		1,532.3	1,580.0	1,570.9	-1%
Education Specialist	53	43	63	65	82	51	56	40	59	82		60.3	57.6	59.4	38%
Doctorate	365	367	411	390	435	416	500	501	426	359		428.7	440.4	417.0	-14%
Total, All Awards	7,486	8,047	8,237	8,369	8,668	8,902	9,150	9,279	10,776	9,832		9,962.3	9,587.8	8,874.6	11%

Figure 1.2: Rate of Change in Total Degrees & Certificates Awarded at the University of Missouri–Kansas City, since 2011

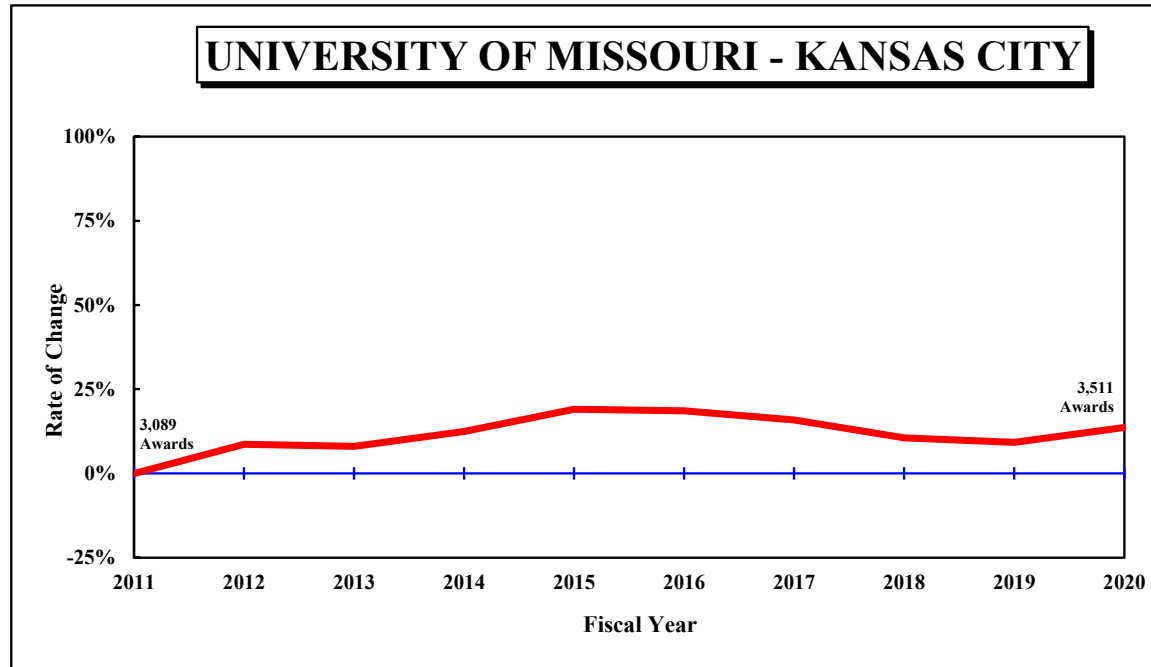


Table 1.2: Degrees and Certificates Awarded at the University of Missouri–Kansas City, July 1, 2010 through June 30, 2020

DEGREE	FY	FY	FY	FY	FY	FY	FY	FY	FY	FY	3-Year	Average			Change in FY20 relative to the 10-Year Avg.
	2011	2012	2013	2014	2015	2016	2017	2018	2019	2020		5-Year	10-Year		
<b>UNIVERSITY OF MISSOURI - KANSAS CITY</b>															
Undergrad. Certificate					7	6	11	24	29	24	25.7	18.8	N/A		
Bachelors	1,523	1,749	1,759	1,803	1,812	1,741	1,824	1,753	1,778	1,903	1,811.3	1,799.8	1,764.5	8%	
Graduate Certificate	24	29	33	33	50	71	48	54	64	53	57.0	58.0	45.9	15%	
First Professional	468	444	475	459	489	480	473	491	486	477	484.7	481.4	474.2	1%	
Masters	972	999	954	1,028	1,197	1,213	1,082	962	859	892	904.3	1,001.6	1,015.8	-12%	
Education Specialist	25	35	24	35	26	32	20	18	24	24	22.0	23.6	26.3	-9%	
Doctorate	77	99	93	116	98	120	122	114	135	138	129.0	125.8	111.2	24%	
<b>Total, All Awards</b>	<b>3,089</b>	<b>3,355</b>	<b>3,338</b>	<b>3,474</b>	<b>3,679</b>	<b>3,663</b>	<b>3,580</b>	<b>3,416</b>	<b>3,375</b>	<b>3,511</b>	<b>3,434.0</b>	<b>3,509.0</b>	<b>3,448.0</b>	<b>2%</b>	

Figure 1.3: Rate of Change in Total Degrees & Certificates Awarded at the Missouri University of Science and Technology, since 2011

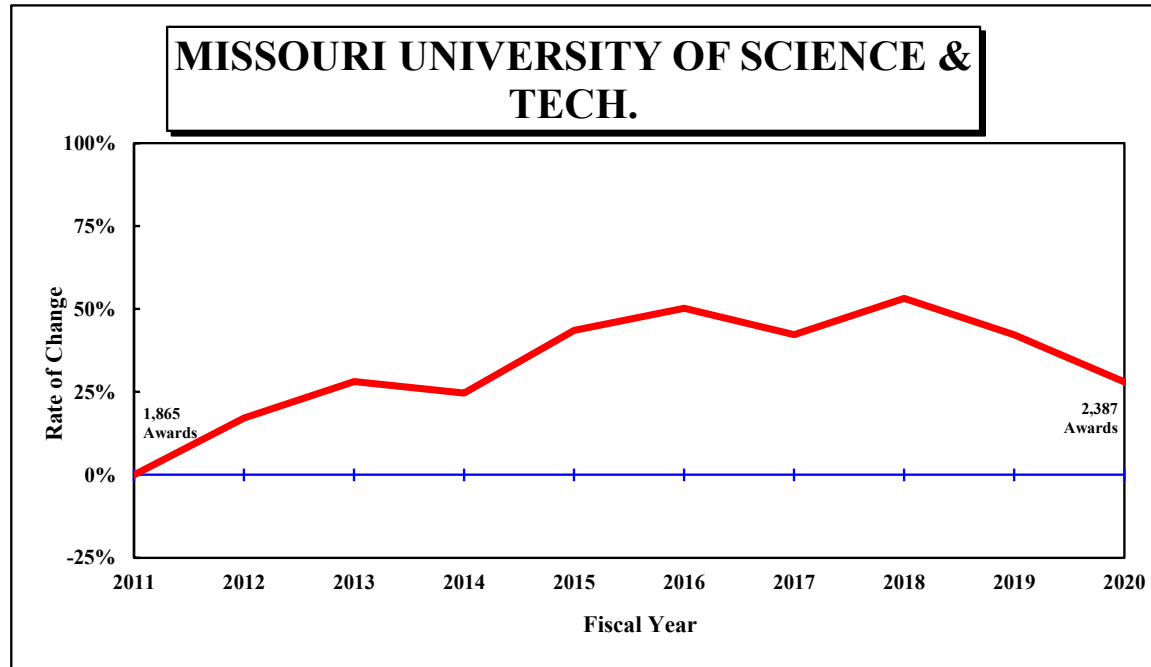


Table 1.3: Degrees and Certificates Awarded at the Missouri University of Science and Technology, July 1, 2010 through June 30, 2020

DEGREE	FY 2011	FY 2012	FY 2013	FY 2014	FY 2015	FY 2016	FY 2017	FY 2018	FY 2019	FY 2020	3-Year Average	5-Year Average	10-Year Average	Change in FY20 relative to the 10-Year Avg.
<b>MISSOURI UNIVERSITY OF SCIENCE AND TECHNOLOGY</b>														
Undergrad. Certificate	4	2	0	3	14	9	8	7	11	8	8.7	8.6	6.6	21%
Bachelors	997	1,077	1,118	1,141	1,307	1,378	1,320	1,416	1,388	1,423	1,409.0	1,385.0	1,256.5	13%
Graduate Certificate	282	319	435	401	404	427	432	510	454	410	458.0	446.6	407.4	1%
Masters	517	567	579	551	675	688	625	613	517	427	519.0	574.0	575.9	-26%
Doctorate	65	70	95	70	95	109	88	116	101	119	112.0	106.6	92.8	28%
<b>Total, All Awards</b>	<b>1,865</b>	<b>2,035</b>	<b>2,227</b>	<b>2,166</b>	<b>2,495</b>	<b>2,611</b>	<b>2,473</b>	<b>2,662</b>	<b>2,471</b>	<b>2,387</b>	<b>2,506.7</b>	<b>2,520.8</b>	<b>2,339.2</b>	<b>2%</b>

Figure 1.4: Rate of Change in Total Degrees & Certificates Awarded at the University of Missouri–St. Louis, since 2011

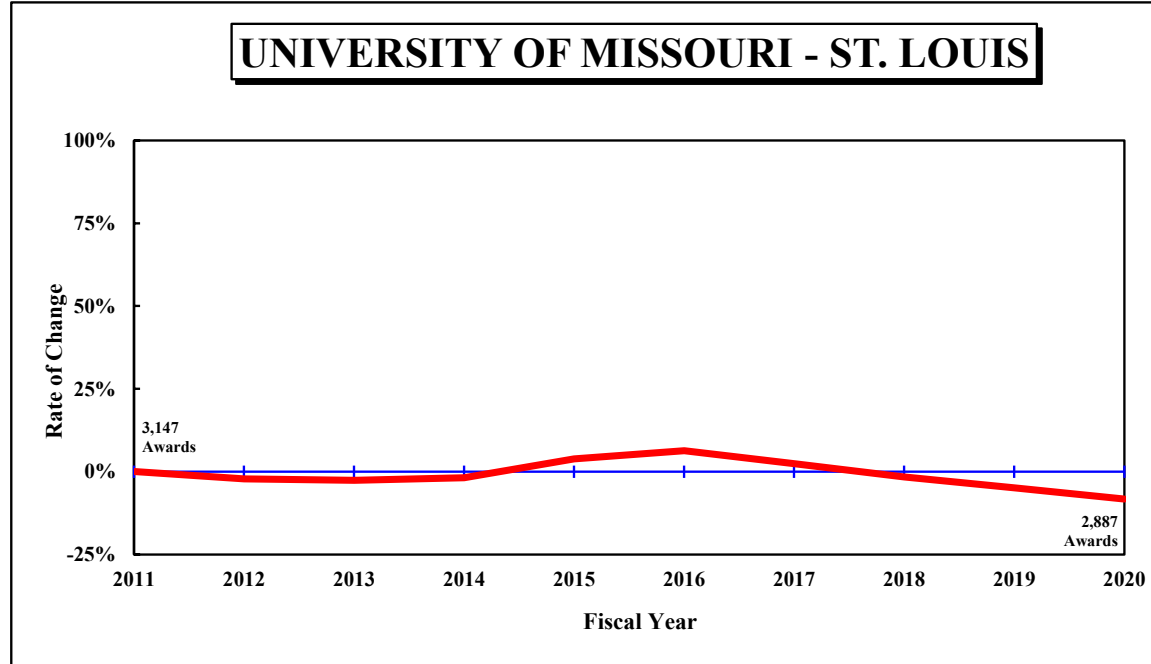


Table 1.4: Degrees and Certificates Awarded at the University of Missouri–St. Louis, July 1, 2010 through June 30, 2020

DEGREE	FY	FY	FY	FY	FY	FY	FY	FY	FY	FY	3-Year	Average			Change in FY20 relative to the 10-Year Avg.
	2011	2012	2013	2014	2015	2016	2017	2018	2019	2020		5-Year	10-Year		
<b>UNIVERSITY OF MISSOURI - ST. LOUIS</b>															
Undergrad. Certificate			2	20	34	29	37	35	68	52	51.7	44.2	N/A		
Bachelors	2,092	1,963	1,974	2,020	2,246	2,252	2,071	1,988	1,921	1,888	1,932.3	2,024.0	2,041.5	-8%	
Graduate Certificate	71	96	88	80	87	116	123	121	122	105	116.0	117.4	100.9	4%	
First Professional	44	47	40	39	41	45	43	39	39	46	41.3	42.4	42.3	9%	
Masters	868	872	871	854	761	810	826	819	728	647	731.3	766.0	805.6	-20%	
Education Specialist	22	26	28	13	14	17	17	9	23	19	17.0	17.0	18.8	1%	
Doctorate	50	74	61	64	84	75	106	87	92	130	103.0	98.0	82.3	58%	
Total, All Awards	3,147	3,078	3,064	3,090	3,267	3,344	3,223	3,098	2,993	2,887	2,992.7	3,109.0	3,119.1	-7%	



Figure 2.0: Rate of Change in Total Degrees Awarded, since 2011

UNIVERSITY OF MISSOURI SYSTEM

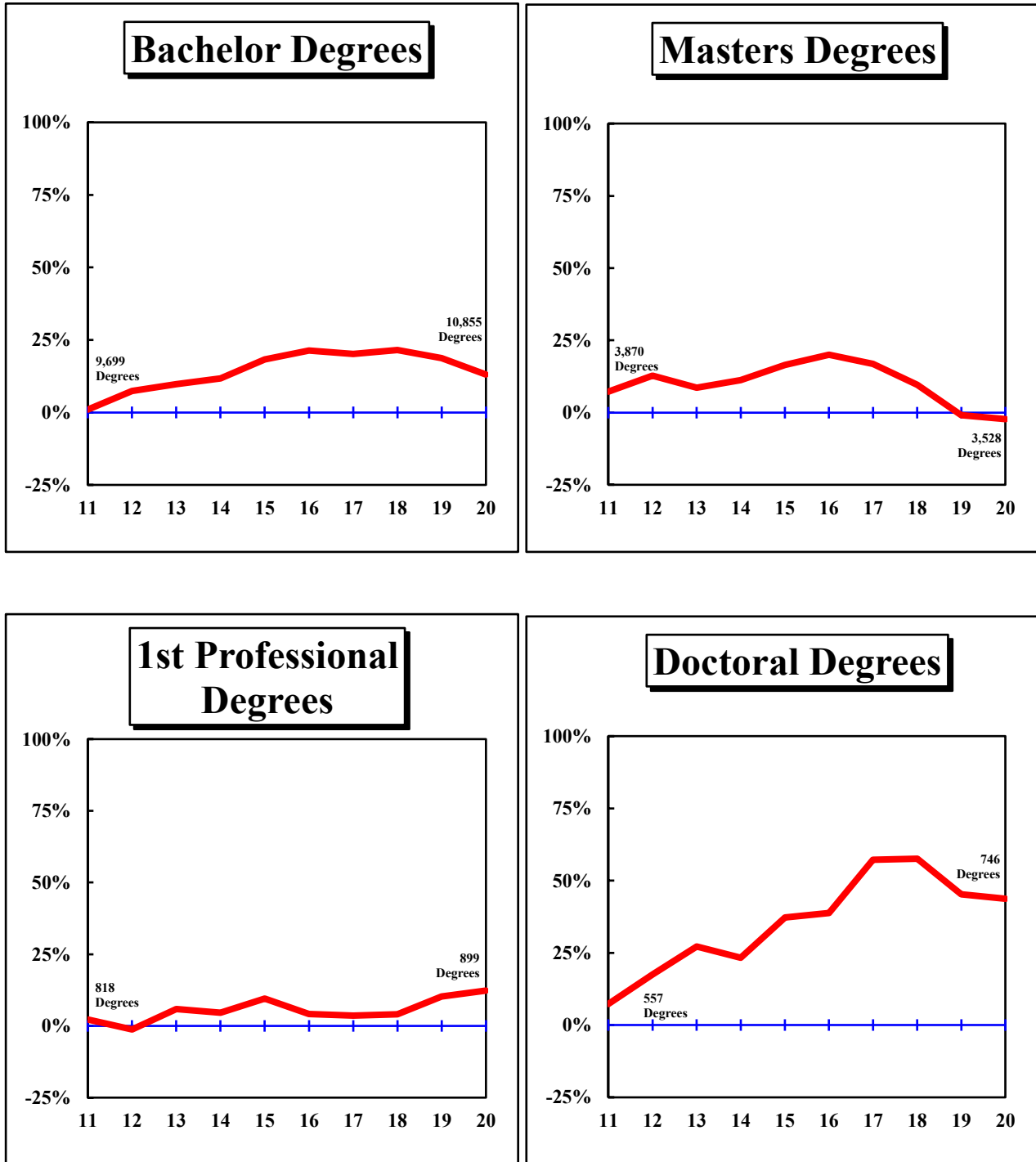


Figure 2.1: Rate of Change in Total Degrees Awarded by Campus, since 2011

UNIVERSITY OF MISSOURI-COLUMBIA

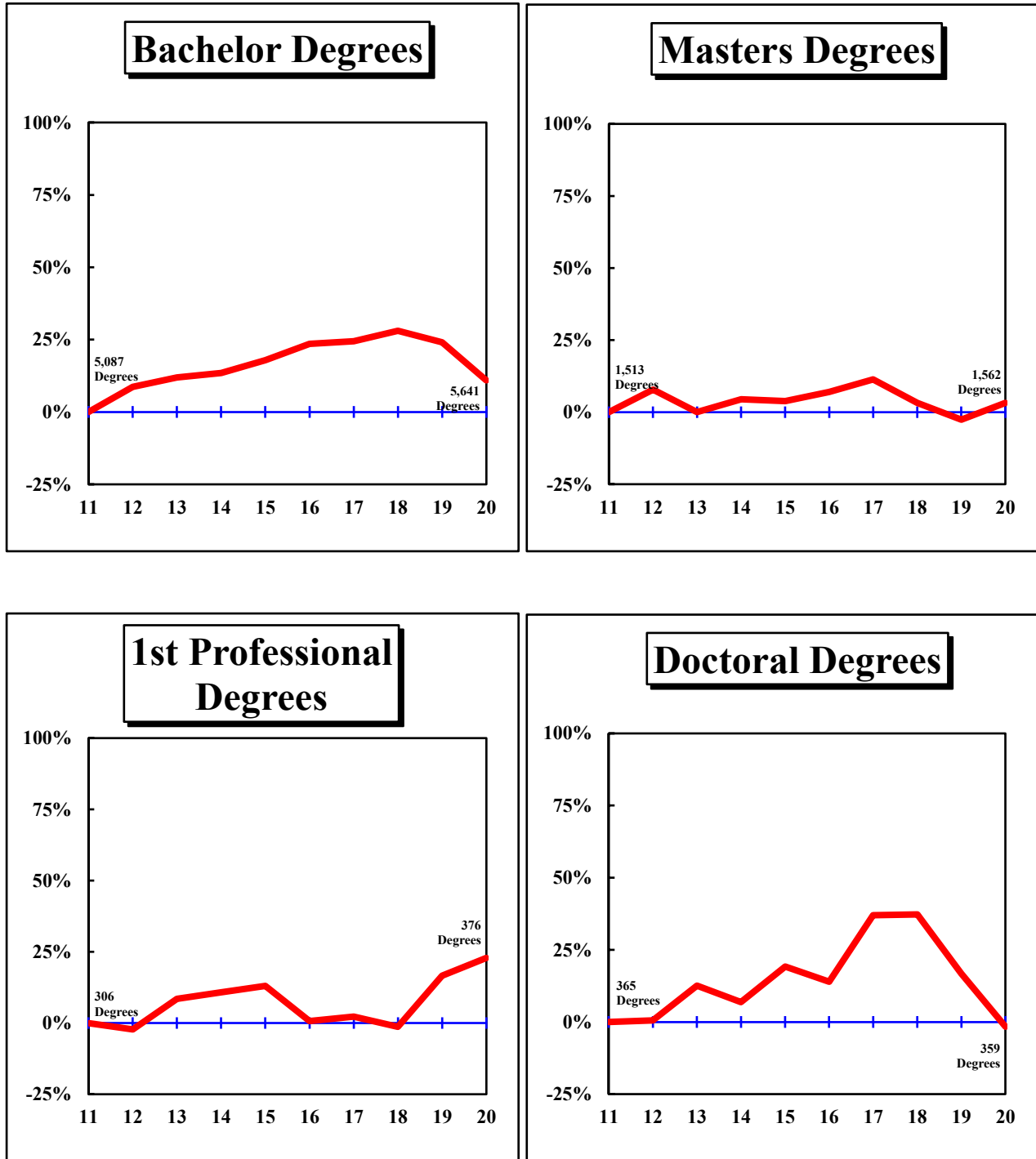


Figure 2.2: Rate of Change in Total Degrees Awarded by Campus, since 2011

UNIVERSITY OF MISSOURI-KANSAS CITY

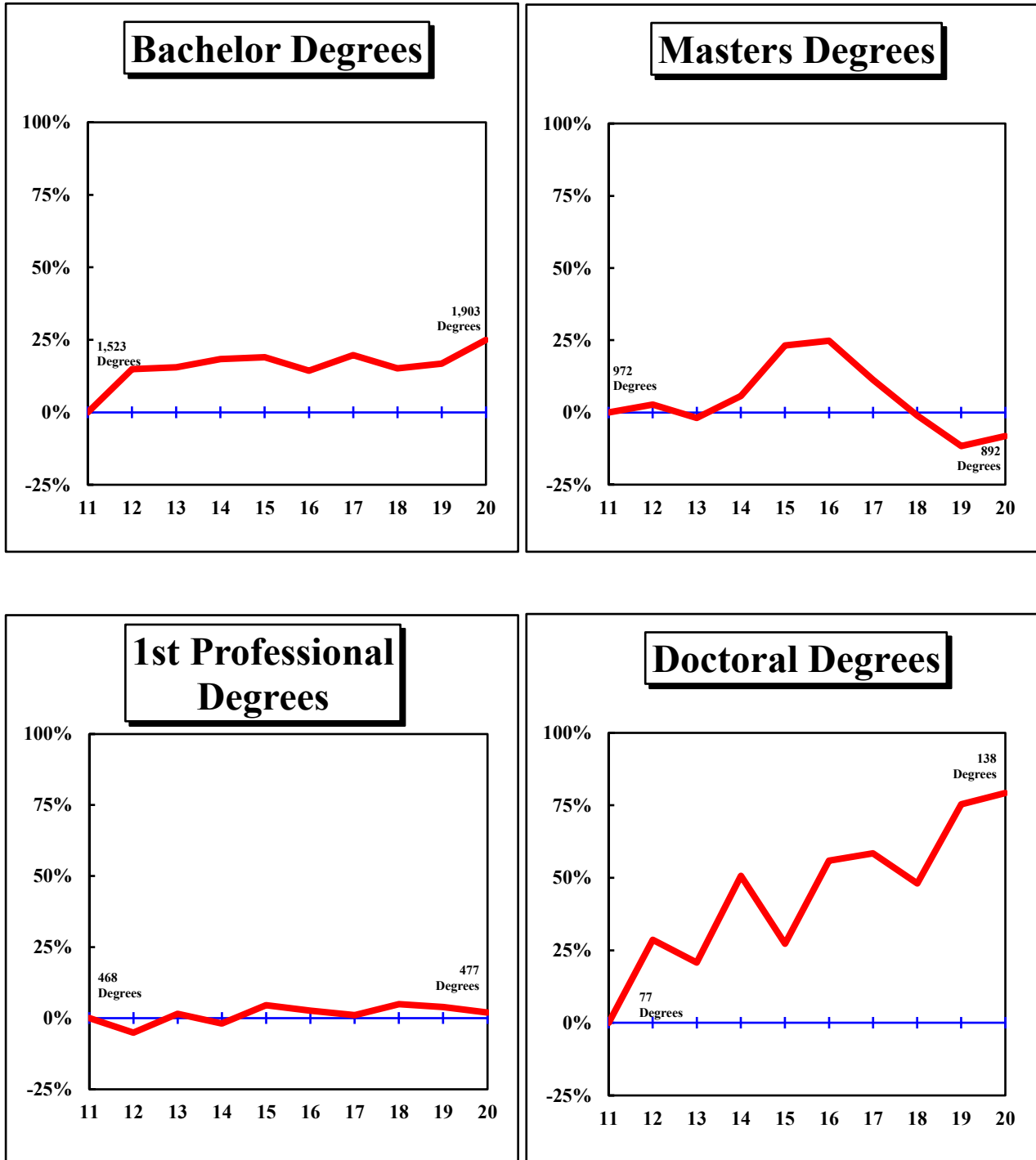


Figure 2.3: Rate of Change in Total Degrees Awarded by Campus, since 2011

MISSOURI UNIVERSITY OF SCIENCE AND TECHNOLOGY

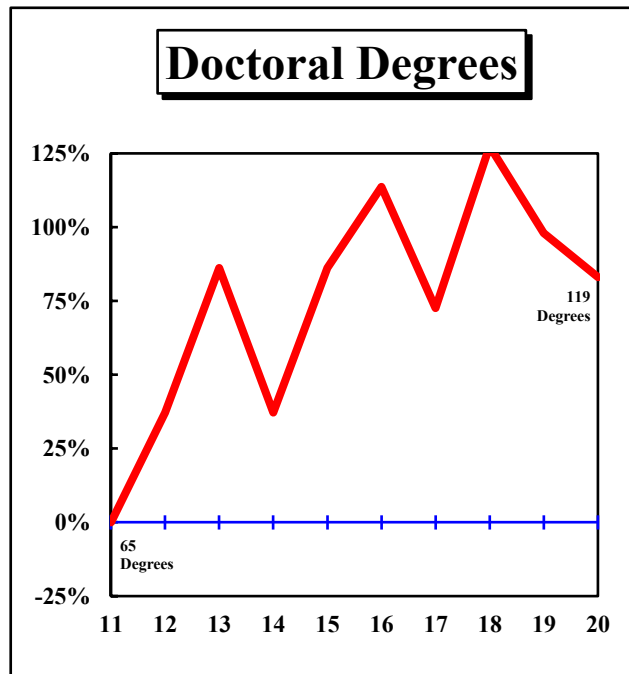
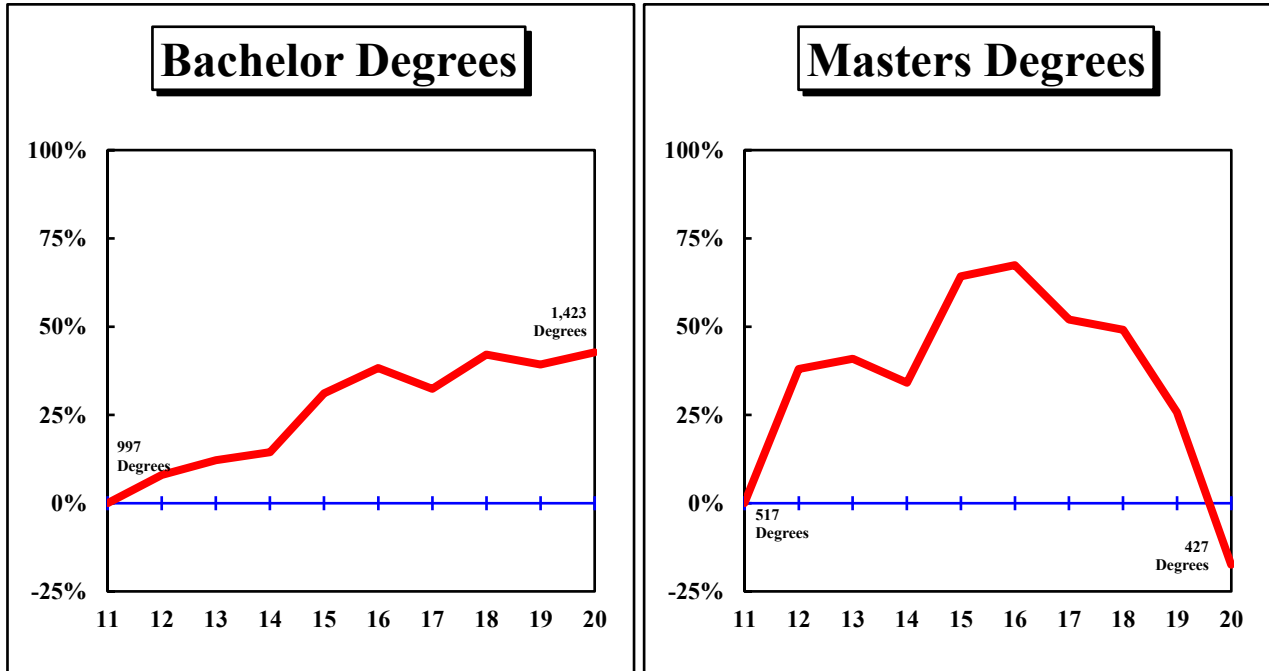
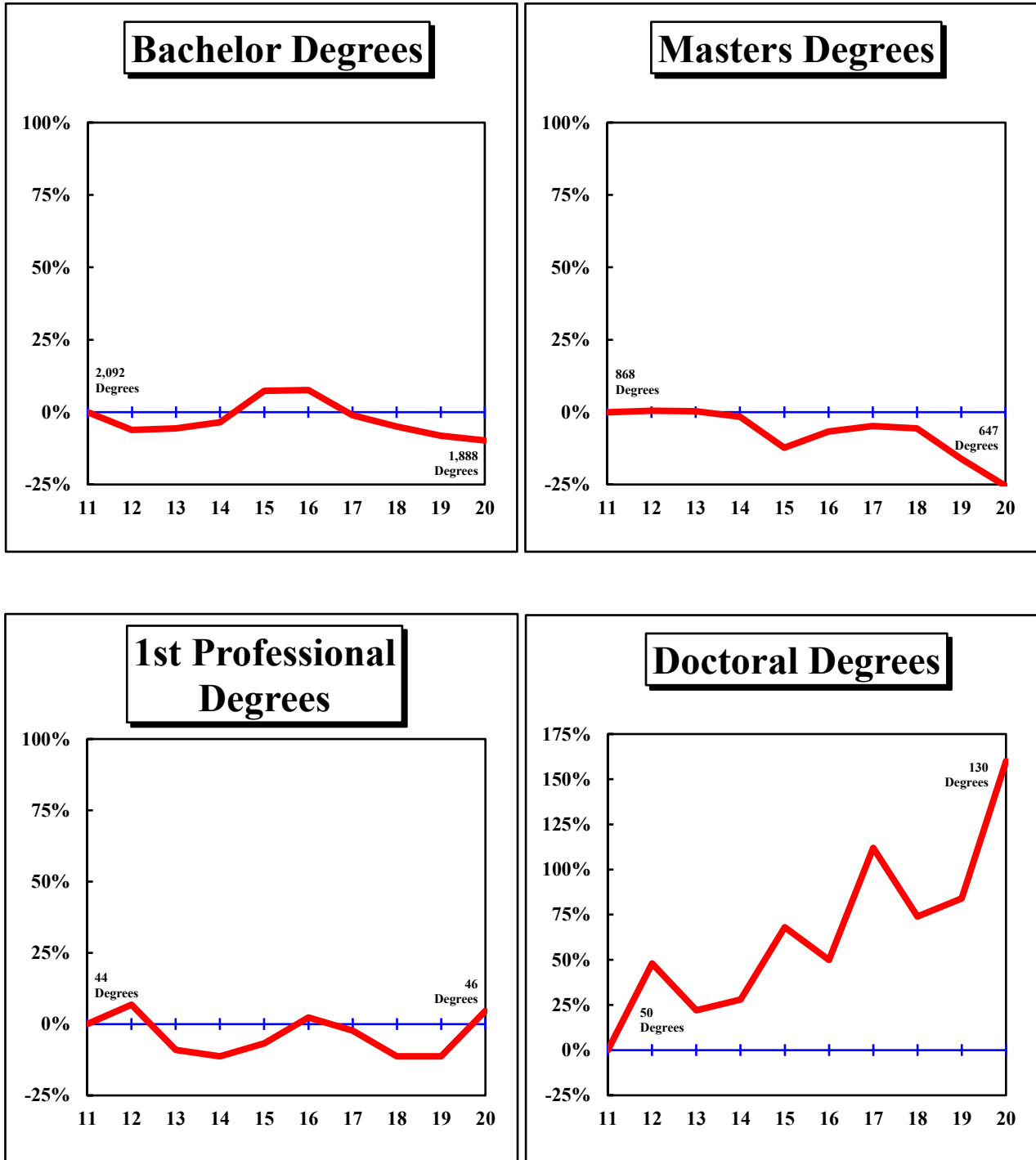


Figure 2.4: Rate of Change in Total Degrees Awarded by Campus, since 2011

UNIVERSITY OF MISSOURI-ST. LOUIS



**Table 2.1: Degrees and Certificates Awarded by Colleges at the University of Missouri–Columbia**

COLLEGE/DEGREE	FY 2011	FY 2012	FY 2013	FY 2014	FY 2015	FY 2016	FY 2017	FY 2018	FY 2019	FY 2020	3-Year	Average 5-Year	10-Year	Change in FY20 relative to the 10-Year Avg.
<b>AGRICULTURE, FOOD, AND NATURAL RESOURCES, COLLEGE OF</b>														
Bachelors	507	545	612	650	756	760	728	736	664	609	669.7	699.4	656.7	-7%
Masters	71	79	65	98	59	103	90	70	69	76	71.7	81.6	78.0	-3%
Doctorate	34	32	44	38	38	35	53	41	47	29	39.0	41.0	39.1	-26%
All	612	656	721	786	853	898	871	847	780	714	780.3	822.0	773.8	-8%
<b>ARTS AND SCIENCE, COLLEGE OF</b>														
Bachelors	1,812	1,961	2,046	1,902	1,963	1,913	1,962	1,994	1,882	1,715	1,863.7	1,893.2	1,915.0	-10%
Masters	176	169	168	209	197	182	179	247	222	221	230.0	210.2	197.0	12%
Doctorate	98	119	106	113	141	124	120	147	139	104	130.0	126.8	121.1	-14%
All	2,086	2,249	2,320	2,224	2,301	2,219	2,261	2,388	2,243	2,040	2,223.7	2,230.2	2,233.1	-9%
<b>BUSINESS, COLLEGE OF</b>														
Bachelors	838	824	786	785	776	829	939	1,026	901	866	931.0	912.2	857.0	1%
Grad. Certif.	27	23	21	24	25	19	38	108	142		N/A	N/A	N/A	
Masters	220	217	231	229	242	222	241	223	235	246	234.7	233.4	230.6	7%
Doctorate	6	10	8	8	5	11	6	6	7	6	6.3	7.2	7.3	-18%
All	1,091	1,074	1,046	1,046	1,048	1,081	1,224	1,363	1,285	1,118	1,255.3	1,214.2	1,137.6	-2%
<b>EDUCATION, COLLEGE OF</b>														
Bachelors	246	274	284	305	280	307	227	245	254	231	243.3	252.8	265.3	-13%
Masters	495	532	464	418	464	457	480	416	400	487	434.3	448.0	461.3	6%
Ed. Specialist	53	43	63	65	82	51	56	40	59	82	60.3	57.6	59.4	38%
Doctorate	84	79	117	73	83	74	102	88	85	60	77.7	81.8	84.5	-29%
All	878	928	928	861	909	889	865	789	798	860	815.7	840.2	870.5	-1%
<b>ENGINEERING, COLLEGE OF</b>														
Bachelors	422	518	472	490	596	693	629	696	742	654	697.3	682.8	591.2	11%
Masters	109	100	120	131	165	136	157	144	98	62	101.3	119.4	122.2	-49%
Doctorate	44	32	32	43	37	36	46	53	41	56	50.0	46.4	42.0	33%
All	575	650	624	664	798	865	832	893	881	772	848.7	848.6	755.4	2%
<b>HEALTH PROFESSIONS, SCHOOL OF</b>														
Bachelors	242	345	426	549	600	702	730	710	788	619	705.7	709.8	571.1	8%
First Profes.									58	72	N/A	N/A	N/A	
Masters	40	55	51	58	60	54	66	135	122	100	119.0	95.4	74.1	35%
Doctorate	43	38	45	43	44	45	58	56	3		N/A	N/A	N/A	
All	325	438	522	650	704	801	854	901	971	791	887.7	863.6	695.7	14%

**Table 2.1: Degrees and Certificates Awarded by Colleges at the University of Missouri–Columbia (continued)**

COLLEGE/DEGREE	FY 2011	FY 2012	FY 2013	FY 2014	FY 2015	FY 2016	FY 2017	FY 2018	FY 2019	FY 2020	3-Year	Average 5-Year	10-Year	Change in FY20 relative to the 10-Year Avg.
<b>HUMAN ENVIRONMENTAL SCIENCES, COLLEGE OF</b>														
Bachelors	317	316	351	351	309	332	368	359	346	281	328.7	337.2	333.0	-16%
Masters	81	131	115	96	112	114	127	107	120	155	127.3	124.6	115.8	34%
Doctorate	15	9	10	14	22	15	15	15	16	19	16.7	16.0	15.0	27%
All	413	456	476	461	443	461	510	481	482	455	472.7	477.8	463.8	-2%
<b>JOURNALISM, SCHOOL OF</b>														
Bachelors	510	534	504	520	483	549	545	540	533	451	508.0	523.6	516.9	-13%
Masters	88	111	73	91	67	103	80	94	82	73	83.0	86.4	86.2	-15%
Doctorate	12	10	8	6	8	7	5	13	6	5	8.0	7.2	8.0	-38%
All	610	655	585	617	558	659	630	647	621	529	599.0	617.2	611.1	-13%
<b>LAW, SCHOOL OF</b>														
Grad. Certif.	39	26	41	25	21	20	16	24	14	9	15.7	16.6	23.5	-62%
First Profes.	144	142	133	132	132	114	101	94	93	84	90.3	97.2	116.9	-28%
Masters	19	8	14	8	12	7	6	3	10	5	6.0	6.2	9.2	-46%
All	202	176	188	165	165	141	123	121	117	98	112.0	120.0	149.6	-34%
<b>MEDICINE, SCHOOL OF</b>														
First Profes.	93	87	98	97	99	87	99	98	95	106	99.7	97.0	95.9	11%
Masters	48	51	42	56	43	65	57	75	53	50	59.3	60.0	54.0	-7%
Doctorate	7	14	13	5	9	8	10	10	8	9	9.0	9.0	9.3	-3%
All	148	152	153	158	151	160	166	183	156	165	168.0	166.0	159.2	4%
<b>NURSING, SCHOOL OF</b>														
Bachelors	193	211	211	217	232	198	203	206	204	215	208.3	205.2	209.0	3%
Masters	43	43	42	36	29	20	11	15	7	9	10.3	12.4	25.5	-65%
Doctorate	4	4	2	25	31	38	57	53	54	51	52.7	50.6	31.9	60%
All	240	258	255	278	292	256	271	274	265	275	271.3	268.2	266.4	3%
<b>PUBLIC AFFAIRS, SCHOOL OF</b>														
Masters				60	52	63	86				N/A	N/A	N/A	
Doctorate				2	2	1	3				N/A	N/A	N/A	
All				62	54	64	89				N/A	N/A	N/A	

**Table 2.1: Degrees and Certificates Awarded by Colleges at the University of Missouri–Columbia (continued)**

COLLEGE/DEGREE	FY 2011	FY 2012	FY 2013	FY 2014	FY 2015	FY 2016	FY 2017	FY 2018	FY 2019	FY 2020	3-Year	Average 5-Year	10-Year	Change in FY20 relative to the 10-Year Avg.
<b>VETERINARY MEDICINE, COLLEGE OF</b>														
First Profes.	69	70	101	110	115	107	113	110	111	114	111.7	111.0	102.0	12%
Masters	8	9	5	9	5	8	10	11	13	10	11.3	10.4	8.8	14%
Doctorate	5	2	2	3	0	2	5	0	2	2	1.3	2.2	2.3	-13%
All	82	81	108	122	120	117	128	121	126	126	124.3	123.6	113.1	11%
<b>GRADUATE STUDIES</b>														
Grad. Certif.	96	130	163	177	193	186	212	230	230	349	269.7	241.4	196.6	78%
Masters	115	126	124	81	64	85	94	22	42	68	44.0	62.2	82.1	-17%
Doctorate	13	18	24	17	15	20	20	19	18	18	18.3	19.0	18.2	-1%
All	224	274	311	275	272	291	326	271	290	435	332.0	322.6	296.9	47%
<b>OTHER UNDERGRADUATE STUDIES</b>														
U-Grad. Certif.									1,761	1,454	N/A	N/A	N/A	

In FY 2014, Public Affairs moved from Graduate Studies.

In FY 2018, Public Affairs moved to Arts & Sciences.

UM-IR/RS 8/20



**Table 2.2: Degrees and Certificates Awarded by Colleges at the University of Missouri–Kansas City**

COLLEGE/DEGREE	FY	FY	FY	FY	FY	FY	FY	FY	FY	FY	3-Year	Average		Change in FY20 relative to the 10-Year Avg.
	2011	2012	2013	2014	2015	2016	2017	2018	2019	2020		5-Year	10-Year	
<b>ARTS AND SCIENCES, COLLEGE OF</b>														
U-Grad. Certif.					7	6	11	24	29	24	25.7	18.8	N/A	
Bachelors	813	934	877	895	844	766	872	784	731	706	740.3	771.8	822.2	-14%
Grad. Certif.	0	1	1	3	6	15	2	6	11	10	9.0	8.8	5.5	82%
Masters	210	252	184	227	228	211	189	184	191	141	172.0	183.2	201.7	-30%
Doctorate	2	3	2	7	3	3	5	4	3	4	3.7	3.8	3.6	11%
All	1,025	1,190	1,064	1,132	1,088	1,001	1,079	1,002	965	885	950.7	986.4	1,043.1	-15%
<b>BIOLOGICAL AND CHEMICAL SCIENCES, SCHOOL OF</b>														
Bachelors	71	95	101	99	86	87	101	127	158	233	172.7	141.2	115.8	101%
Masters	21	26	26	24	22	12	12	6	8	14	9.3	10.4	17.1	-18%
All	92	121	127	123	108	99	113	133	166	247	182.0	151.6	132.9	86%
<b>COMPUTING AND ENGINEERING, SCHOOL OF</b>														
Bachelors	82	103	118	105	124	163	178	164	219	267	216.7	198.2	152.3	75%
Grad. Certif.			1	2	3	2	1	2	4	2	2.7	2.2	N/A	
Masters	194	121	122	124	274	446	391	307	223	226	252.0	318.6	242.8	-7%
All	276	224	241	231	401	611	570	473	446	495	471.3	519.0	396.8	25%
<b>DENTISTRY, SCHOOL OF</b>														
Bachelors	34	35	36	30	34	30	35	33	33	29	31.7	32.0	32.9	-12%
Grad. Certif.	17	17	17	17	17	17	17	12	14	11	12.3	14.2	15.6	-29%
First Profes.	98	99	106	103	104	105	105	114	105	104	107.7	106.6	104.3	0%
Masters	9	9	10	4	7	6	5	10	4	7	7.0	6.4	7.1	-1%
All	158	160	169	154	162	158	162	169	156	151	158.7	159.2	159.9	-6%
<b>EDUCATION, SCHOOL OF</b>														
Bachelors	107	113	108	112	87	66	53	40	32	52	41.3	48.6	77.0	-32%
Grad. Certif.		0	0	3	4	18	2	2	0	0	0.7	4.4	N/A	
Masters	131	144	156	152	175	152	122	85	87	102	91.3	109.6	130.6	-22%
Ed. Specialist	25	35	24	35	26	32	20	18	24	24	22.0	23.6	26.3	-9%
Doctorate	4	13	9	21	11	13	8	11	17	11	13.0	12.0	11.8	-7%
All	267	305	297	323	303	281	205	156	160	189	168.3	198.2	248.6	-24%

**Table 2.2: Degrees and Certificates Awarded by Colleges at the University of Missouri–Kansas City (continued)**

COLLEGE/DEGREE	FY 2011	FY 2012	FY 2013	FY 2014	FY 2015	FY 2016	FY 2017	FY 2018	FY 2019	FY 2020	3-Year	Average 5-Year	10-Year	Change in FY20 relative to the 10-Year Avg.
<b>GRADUATE STUDIES, SCHOOL OF</b>														
Grad. Certif.	2	5	2	2	5	9	9	13	13	10	12.0	10.8	7.0	43%
Doctorate	31	42	45	55	47	48	47	39	41	44	41.3	43.8	43.9	0%
All	33	47	47	57	52	57	56	52	54	54	53.3	54.6	50.9	6%
<b>LAW, SCHOOL OF</b>														
First Profes.	156	150	159	141	141	159	141	131	137	127	131.7	139.0	144.2	-12%
Masters	30	18	33	29	29	25	21	22	15	16	17.7	19.8	23.8	-33%
All	186	168	192	170	170	184	162	153	152	143	149.3	158.8	168.0	-15%
<b>MANAGEMENT, SCHOOL OF</b>														
Bachelors	207	228	231	276	315	307	303	321	320	359	333.3	322.0	286.7	25%
Grad. Certif.			0	0	2	3	3	4	0	1	1.7	2.2	N/A	
Masters	257	276	263	292	288	248	237	204	195	193	197.3	215.4	245.3	-21%
Doctorate		0	1	1	0	2	2	1	1	0	0.7	1.2	N/A	
All	464	504	495	569	605	560	545	530	516	553	533.0	540.8	534.1	4%
<b>MEDICINE, SCHOOL OF</b>														
Grad. Certif.	0	1	5	0	6	6	11	3	3	2	2.7	5.0	3.7	
First Profes.	101	89	88	90	119	94	103	110	95	112	105.7	102.8	100.1	12%
Masters	4	7	12	21	22	37	46	41	45	47	44.3	43.2	28.2	67%
All	105	97	105	111	147	137	160	154	143	161	152.7	151.0	132.0	22%
<b>MUSIC AND DANCE, CONSERVATORY OF</b>														
Bachelors	47	65	64	43	62	52	56	46	59	66	57.0	55.8	56.0	18%
Grad. Certif.	5	5	7	6	7	1	3	10	3	7	6.7	4.8	5.4	30%
Masters	38	39	42	25	36	49	27	51	42	66	53.0	47.0	41.5	59%
Doctorate	21	16	21	18	14	26	20	20	28	16	21.3	22.0	20.0	-20%
All	111	125	134	92	119	128	106	127	132	155	138.0	129.6	122.9	26%
<b>NURSING AND HEALTH STUDIES, SCHOOL OF</b>														
Bachelors	148	167	217	239	260	270	226	238	226	191	218.3	230.2	218.2	-12%
Grad. Certif.								2	16	10	9.3	N/A	N/A	
Masters	78	107	106	130	116	27	32	52	49	80	60.3	48.0	77.7	3%
Doctorate	19	25	15	14	23	28	40	39	45	63	49.0	43.0	31.1	103%
All	245	299	338	383	399	325	298	331	336	344	337.0	326.8	329.8	4%

**Table 2.2: Degrees and Certificates Awarded by Colleges at the University of Missouri–Kansas City (continued)**

COLLEGE/DEGREE	FY 2011	FY 2012	FY 2013	FY 2014	FY 2015	FY 2016	FY 2017	FY 2018	FY 2019	FY 2020	3-Year	<u>Average</u> 5-Year	10-Year	Change in FY20 relative to the 10-Year Avg.
<b>PHARMACY, SCHOOL OF</b>														
Bachelors	14	9	7	4							N/A	N/A	N/A	
First Profes.	113	106	122	125	125	122	124	136	149	134	139.7	133.0	125.6	7%
Masters	0	0									N/A	N/A	N/A	
All	127	115	129	129	125	122	124	136	149	134	139.7	133.0	129.0	4%

UM-IR/RS 8/20

**Table 2.3: Degrees and Certificates Awarded by Colleges at the Missouri University of Science and Technology**

COLLEGE/DEGREE	FY	FY	FY	FY	FY	FY	FY	FY	FY	FY	3-Year	Average		Change in FY20 relative to the 10-Year Avg.
	2011	2012	2013	2014	2015	2016	2017	2018	2019	2019		5-Year	10-Year	
<b>ARTS, SCIENCES, AND BUSINESS, COLLEGE OF</b>														
U-Grad. Certif.								1	0	0	N/A	N/A	N/A	
Bachelors					292	287	259	219	225	244	229.3	246.8	N/A	
Grad. Certif.					39	43	62	70	57	54	60.3	57.2	N/A	
Masters					88	90	80	80	61	72	71.0	76.6	N/A	
Doctorate					16	24	17	25	10	24	19.7	20.0	N/A	
All					435	444	418	395	353	394	380.7	400.8	N/A	
<b>ENGINEERING AND COMPUTING, COLLEGE OF</b>														
U-Grad. Certif.					14	9	8	6	11	8	8.3	8.4	N/A	
Bachelors					1,015	1,091	1,061	1,197	1,163	1,179	1,179.7	1,138.2	N/A	
Grad. Certif.					365	384	370	440	397	356	397.7	389.4	N/A	
Masters					587	598	545	533	456	355	448.0	497.4	N/A	
Doctorate					79	85	71	91	91	95	92.3	86.6	N/A	
All					2,060	2,167	2,055	2,267	2,118	1,993	2,126.0	2,120.0	N/A	

In FY 2008, Missouri University of Science and Technology (formally University of Missouri-Rolla) eliminated the positions of College/School Dean.  
 In FY 2015, the positions of College/School Dean were reestablished.

UM-IR/RS 8/20

**Table 2.4: Degrees and Certificates Awarded by Colleges at the University of Missouri–St. Louis**

COLLEGE/DEGREE	FY 2011	FY 2012	FY 2013	FY 2014	FY 2015	FY 2016	FY 2017	FY 2018	FY 2019	FY 2020	3-Year	Average 5-Year	10-Year	Change in FY20 relative to the 10-Year Avg.
<b>ARTS AND SCIENCES, COLLEGE OF</b>														
U-Grad. Certif.			2	20	33	29	36	35	66	52	51.0	43.6	N/A	
Bachelors	772	763	791	792	913	924	927	923	914	869	902.0	911.4	858.8	1%
Grad. Certif.	20	30	27	9	23	15	17	10	15	11	12.0	13.6	17.7	-38%
Masters	241	243	237	210	199	196	181	187	139	135	153.7	167.6	196.8	-31%
Doctorate	24	33	29	36	32	29	35	39	27	33	33.0	32.6	31.7	4%
All	1,057	1,069	1,086	1,067	1,200	1,193	1,196	1,194	1,161	1,100	1,151.7	1,168.8	1,132.3	-3%
<b>BUSINESS ADMINISTRATION, COLLEGE OF</b>														
U-Grad. Certif.						0	1	0	2	0	0.7	0.6	N/A	
Bachelors	579	505	440	507	516	524	523	534	533	528	531.7	528.4	518.9	2%
Grad. Certif.	13	19	7	16	20	29	35	38	24	28	30.0	30.8	22.9	22%
Masters	171	204	189	185	169	174	226	206	218	171	198.3	199.0	191.3	-11%
Doctorate	1	2	0	0	8	3	1	1	3	3	2.3	2.2	2.2	36%
All	764	730	636	708	713	730	786	779	780	730	763.0	761.0	735.6	-1%
<b>EDUCATION, COLLEGE OF</b>														
Bachelors	256	223	234	205	198	187	212	145	145	149	146.3	167.6	195.4	-24%
Grad. Certif.	10	21	21	25	23	36	38	33	36	22	30.3	33.0	26.5	-17%
Masters	340	301	336	370	308	323	282	276	286	271	277.7	287.6	309.3	-12%
Ed. Specialist	22	26	28	13	14	17	17	9	23	19	17.0	17.0	18.8	1%
Doctorate	21	33	24	21	34	38	62	42	37	61	46.7	48.0	37.3	64%
All	649	604	643	634	577	601	611	505	527	522	518.0	553.2	587.3	-11%
<b>FINE ARTS AND COMMUNICATION, COLLEGE OF</b>														
U-Grad. Certif.			0	0	1	0					N/A	N/A	N/A	
Bachelors	223	207	225	218	247	241					N/A	N/A	N/A	
Masters	17	28	4	14	12	13					N/A	N/A	N/A	
All	240	235	229	232	260	254					N/A	N/A	N/A	
<b>NURSING, COLLEGE OF</b>														
Bachelors	201	206	224	246	284	253	250	237	194	197	209.3	226.2	229.2	-14%
Grad. Certif.	4	2	2	4	2	1	2	10	19	17	15.3	9.8	6.3	170%
Masters	72	63	79	52	55	53	67	89	3	1	31.0	42.6	53.4	-98%
Doctorate	4	6	7	7	9	5	8	5	25	33	21.0	15.2	10.9	203%
All	281	277	312	309	350	312	327	341	241	248	276.7	293.8	299.8	-17%

**Table 2.4: Degrees and Certificates Awarded by Colleges at the University of Missouri–St. Louis (continued)**

COLLEGE/DEGREE	FY 2011	FY 2012	FY 2013	FY 2014	FY 2015	FY 2016	FY 2017	FY 2018	FY 2019	FY 2020	3-Year	Average 5-Year	10-Year	Change in FY20 relative to the 10-Year Avg.
<b>OPTOMETRY, COLLEGE OF</b>														
First Profes.	44	47	40	39	41	45	43	39	39	46	41.3	42.4	42.3	9%
Masters	1	0	1	1							N/A	N/A	N/A	
Doctorate	0	0	1	0	1						N/A	N/A	N/A	
All	45	47	42	40	42	45	43	39	39	46	41.3	42.4	42.8	7%
<b>SOCIAL WORK, SCHOOL OF</b>														
Bachelors						25	76	90	81	70	80.3	68.4	N/A	
Masters						33	54	52	71	61	61.3	54.2	N/A	
All						58	130	142	152	131	141.7	122.6	N/A	
<b>ENGINEERING PROGRAM</b>														
Bachelors	58	58	58	51	88	97	83	59	54	75	62.7	73.6	68.1	10%
<b>GRADUATE SCHOOL</b>														
Bachelors	3	1	2	1	0	1	0	0	0	0	0.0	0.2	0.8	-100%
Grad. Certif.	24	24	31	26	19	35	31	30	28	27	28.3	30.2	27.5	-2%
Masters	26	33	25	22	18	18	16	9	11	8	9.3	12.4	18.6	-57%
All	53	58	58	49	37	54	47	39	39	35	37.7	42.8	46.9	-25%

In FY 2016, Social Work moved from Arts & Sciences.

In FY 2017, Fine Arts & Communication moved to Arts & Sciences.

UM-IR/RS 8/20