

**The 2018-2019 Report of Degrees Awarded  
by the University of Missouri**

Randy Sade  
Senior Research Analyst

Office of Institutional Research  
University of Missouri System

September 2019

UM-IR 2019, Report 1

<http://www.umsystem.edu/ums/fa/ir/>

# The 2018-2019 Report of Degrees Awarded by the University of Missouri

## Executive Summary

This report includes graphs and tables of degrees awarded by each campus since FY 2010. The first table provides a summary of degrees by level for each campus, while the second table series gives the number of awards by the colleges of each campus. The *Department Detail Summary* reflects the number of degrees awarded by academic department. These tables also show the average number of degrees over a 3, 5, & 10-year period and the percent change in FY 2019 that is relative to the 10-year average.

The highlights of the report from the Table 1 series include:

- The University of Missouri System awarded 19,615 degrees and certificates, a 12% growth in FY 2019 relative to the 10-year average.
- Relative to the 10-year average, the number of FY 2019 doctorate degrees for the University of Missouri System increased 11% and graduate certificates increased 32%.
- Comparing FY 2019 degrees to the 10-year averages, the most notable increases are: bachelors degrees awarded are up 8% at UM-Columbia and 14% at Missouri S&T.
- First Professional degrees at UM-Columbia increased 11% when comparing FY 2019 to the 10-year average.
- Based on the 10-year averages, Graduate Certificates continues to grow in FY 2019 with a 60% increase at UM-Columbia, 51% increase at UM-Kansas City, and 24% increase at UM-St. Louis.

## Notes Regarding Use of the Report:

- The official annual reporting period is from July 1 to June 30 of the following calendar year. For example, FY19 includes summer and fall graduates from 2018 and the spring graduates of 2019.
- Please note the axis scale range when considering graphs. It may change from campus to campus.
- Previous year's tables may differ because tables in the report have been changed from the use of running averages to 3-, 5-, and 10-year averages.
- This report includes a 10-year average as related to FY 2019.
- Source for this report is the printed Completions Report.

## Technical Notes for Use with the Report:

### Footnotes

- Footnotes are of the utmost importance in reading tables in the appendix.

### Name Changes

- If a program name changes, the report history is changed to reflect the new name and is footnoted.
- If a degree name or description is changed, the report history is changed to the new description and is footnoted.
- If a department name changes, the report history is changed to the new description and NO footnotes are made.
- If a school or college changes, the report history is changed to the new description and NO footnotes are made.

### Program Moves

- If a program moves to another department or school, the data are reported as is – that is, report history is not changed and new data are reported in the new department. A new footnote is added, i.e., program is moving. Eventually – when there are no more degrees for the old department, the old department is hidden in the report.
- If a program moves to another school or college, the data are reported as is – that is, report history is not changed and new data are reported in the new school or college. A footnote is added, i.e., program is moving. Eventually – when there are no more degrees for the old program, the former program is hidden in the report.

Figure 1.0: Rate of Change in Total Degrees & Certificates Awarded for the University of Missouri System, since 2010

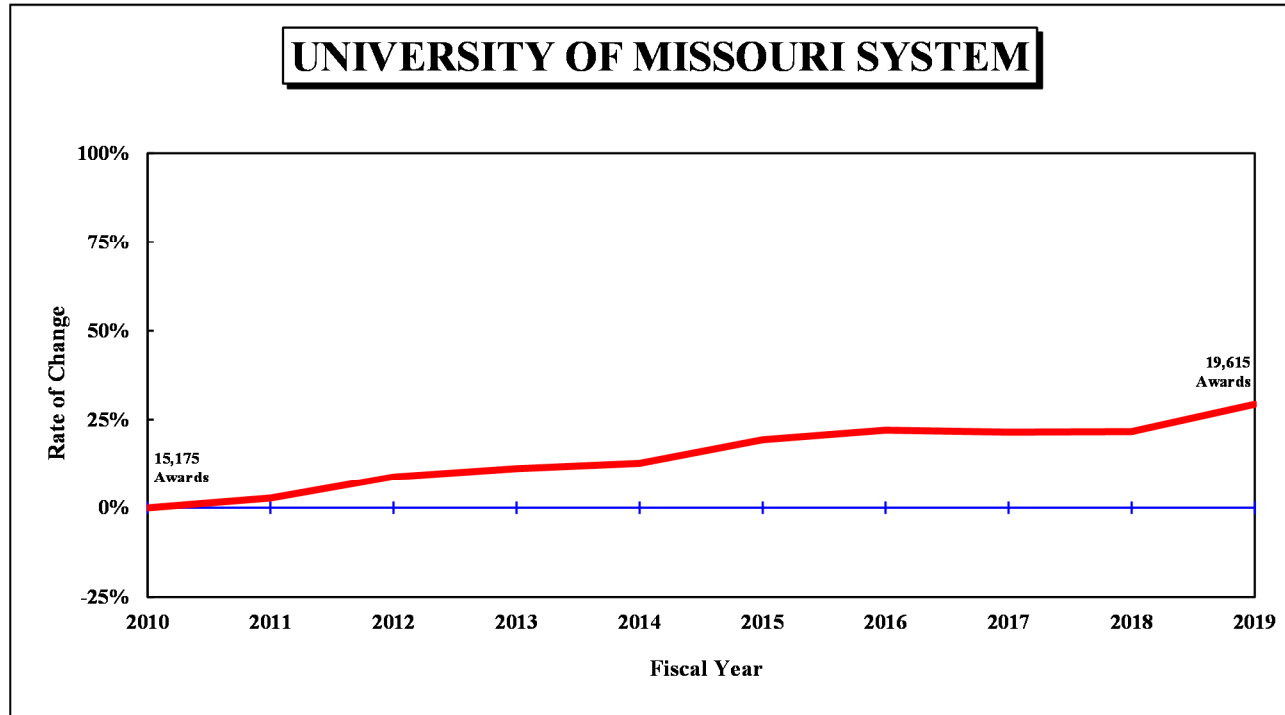


Table 1.0: Degrees and Certificates Awarded for the University of Missouri System, July 1, 2009 through June 30, 2019

DEGREE	FY	FY	FY	FY	FY	FY	FY	FY	FY	FY	3-Year	Average		Change in FY19 relative to the 10-Year Avg.	
	2010	2011	2012	2013	2014	2015	2016	2017	2018	2019		5-Year	10-Year		
<b>UNIVERSITY OF MISSOURI SYSTEM</b>															
Undergrad. Certificate	1	4	2	2	23	55	44	56	66	1,869	663.7	418.0	212.2	781%	
Bachelors	9,604	9,699	10,317	10,543	10,733	11,360	11,654	11,546	11,669	11,401	11,538.7	11,526.0	10,852.6	5%	
Graduate Certificate	520	539	623	781	740	780	839	869	1,047	1,026	980.7	912.2	776.4	32%	
First Professional	800	818	790	847	837	876	833	829	832	882	847.7	850.4	834.4	6%	
Masters	3,608	3,870	4,069	3,919	4,013	4,204	4,330	4,217	3,956	3,577	3,916.7	4,056.8	3,976.3	-10%	
Education Specialist	123	100	104	115	113	122	100	93	67	106	88.7	97.6	104.3	2%	
Doctorate	519	557	610	660	640	712	720	816	818	754	796.0	764.0	680.6	11%	
Total, All Awards	15,175	15,587	16,515	16,867	17,099	18,109	18,520	18,426	18,455	19,615	18,832.0	18,625.0	17,436.8	12%	

Figure 1.1: Rate of Change in Total Degrees & Certificates Awarded at the University of Missouri–Columbia, since 2010

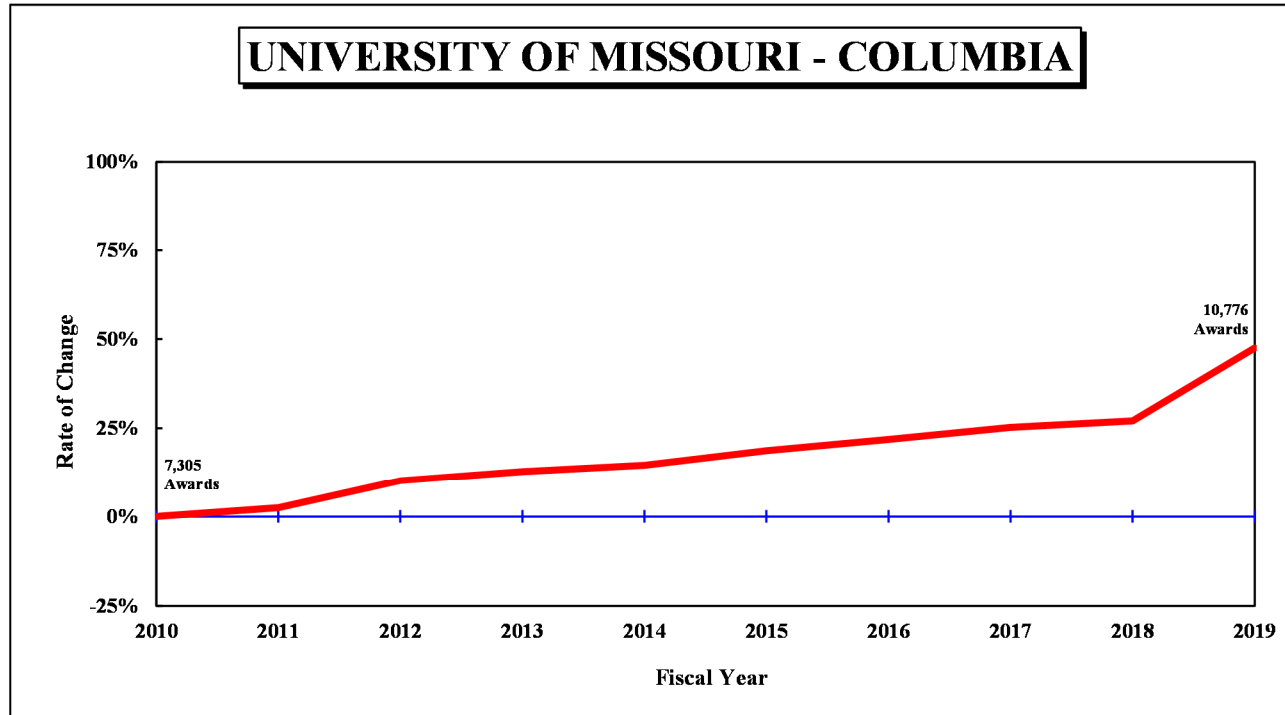


Table 1.1: Degrees and Certificates Awarded at the University of Missouri–Columbia, July 1, 2009 through June 30, 2019

DEGREE	FY 2010	FY 2011	FY 2012	FY 2013	FY 2014	FY 2015	FY 2016	FY 2017	FY 2018	FY 2019	3-Year	Average 5-Year	10-Year	Change in FY19 relative to the 10-Year Avg.
<b>UNIVERSITY OF MISSOURI - COLUMBIA</b>														
Undergrad. Certificate										1,761	N/A	N/A	N/A	
Bachelors	4,963	5,087	5,528	5,692	5,769	5,995	6,283	6,331	6,512	6,314	6,385.7	6,287.0	5,847.4	8%
Graduate Certificate	142	162	179	225	226	239	225	266	362	386	338.0	295.6	241.2	60%
First Professional	304	306	299	332	339	346	308	313	302	357	324.0	325.2	320.6	11%
Masters	1,515	1,513	1,631	1,515	1,580	1,571	1,619	1,684	1,562	1,473	1,573.0	1,581.8	1,566.3	-6%
Education Specialist	59	53	43	63	65	82	51	56	40	59	51.7	57.6	57.1	3%
Doctorate	322	365	367	411	390	435	416	500	501	426	475.7	455.6	413.3	3%
<b>Total, All Awards</b>	<b>7,305</b>	<b>7,486</b>	<b>8,047</b>	<b>8,238</b>	<b>8,369</b>	<b>8,668</b>	<b>8,902</b>	<b>9,150</b>	<b>9,279</b>	<b>10,776</b>	<b>9,735.0</b>	<b>9,355.0</b>	<b>8,622.0</b>	<b>25%</b>

Figure 1.2: Rate of Change in Total Degrees & Certificates Awarded at the University of Missouri–Kansas City, since 2010

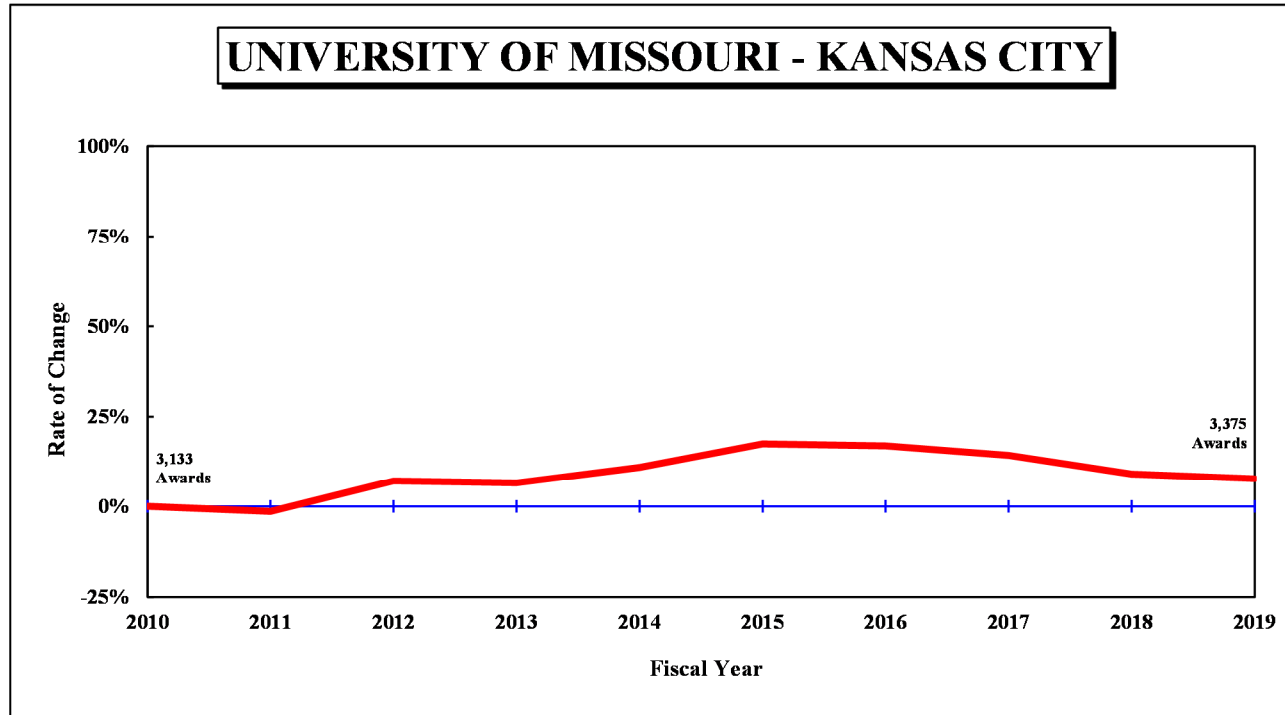


Table 1.2: Degrees and Certificates Awarded at the University of Missouri–Kansas City, July 1, 2009 through June 30, 2019

DEGREE	FY 2010	FY 2011	FY 2012	FY 2013	FY 2014	FY 2015	FY 2016	FY 2017	FY 2018	FY 2019	3-Year	Average 5-Year	10-Year	Change in FY19 relative to the 10-Year Avg.
<b>UNIVERSITY OF MISSOURI - KANSAS CITY</b>														
Undergrad. Certificate						7	6	11	24	29	21.3	15.4	N/A	
Bachelors	1,633	1,523	1,749	1,759	1,803	1,812	1,741	1,824	1,753	1,778	1,785.0	1,781.6	1,737.5	2%
Graduate Certificate	18	24	29	33	33	50	71	48	54	64	55.3	57.4	42.4	51%
First Professional	455	468	444	475	459	489	480	473	491	486	483.3	483.8	472.0	3%
Masters	911	972	999	954	1,028	1,197	1,213	1,082	962	859	967.7	1,062.6	1,017.7	-16%
Education Specialist	33	25	35	24	35	26	32	20	18	24	20.7	24.0	27.2	-12%
Doctorate	83	77	99	93	116	98	120	122	114	135	123.7	117.8	105.7	28%
<b>Total, All Awards</b>	<b>3,133</b>	<b>3,089</b>	<b>3,355</b>	<b>3,338</b>	<b>3,474</b>	<b>3,679</b>	<b>3,663</b>	<b>3,580</b>	<b>3,416</b>	<b>3,375</b>	<b>3,457.0</b>	<b>3,542.6</b>	<b>3,410.2</b>	<b>-1%</b>

Figure 1.3: Rate of Change in Total Degrees & Certificates Awarded at the Missouri University of Science and Technology, since 2010

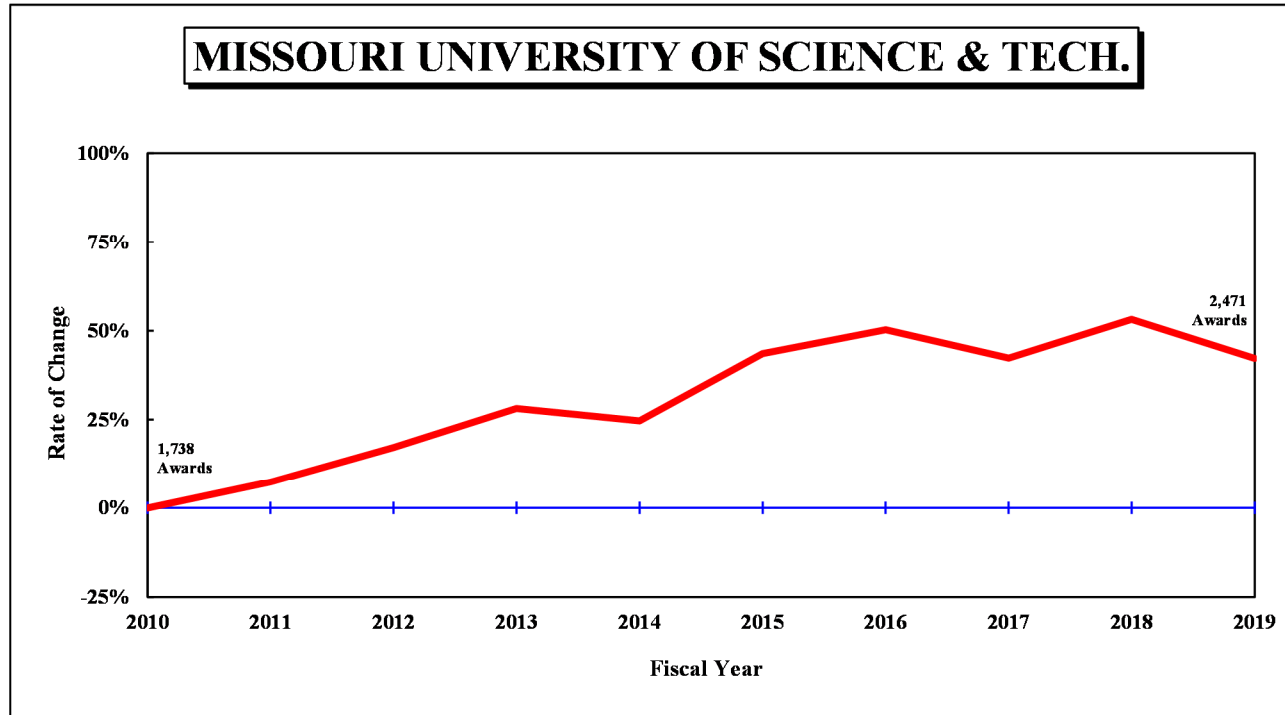


Table 1.3: Degrees and Certificates Awarded at the Missouri University of Science and Technology, July 1, 2009 through June 30, 2019

DEGREE	FY	FY	FY	FY	FY	FY	FY	FY	FY	FY	3-Year	Average			Change in FY19 relative to the 10-Year Avg.
	2010	2011	2012	2013	2014	2015	2016	2017	2018	2019		5-Year	10-Year		
<b>MISSOURI UNIVERSITY OF SCIENCE AND TECHNOLOGY</b>															
Undergrad. Certificate	1	4	2	0	3	14	9	8	7	11	8.7	9.8	5.9	86%	
Bachelors	997	997	1,077	1,118	1,141	1,307	1,378	1,320	1,416	1,388	1,374.7	1,361.8	1,213.9	14%	
Graduate Certificate	278	282	319	435	401	404	427	432	510	454	465.3	445.4	394.2	15%	
Masters	411	517	567	579	551	675	688	625	613	517	585.0	623.6	574.3	-10%	
Doctorate	51	65	70	95	70	95	109	88	116	101	101.7	101.8	86.0	17%	
<b>Total, All Awards</b>	<b>1,738</b>	<b>1,865</b>	<b>2,035</b>	<b>2,227</b>	<b>2,166</b>	<b>2,495</b>	<b>2,611</b>	<b>2,473</b>	<b>2,662</b>	<b>2,471</b>	<b>2,535.3</b>	<b>2,542.4</b>	<b>2,274.3</b>	<b>9%</b>	

Figure 1.4: Rate of Change in Total Degrees & Certificates Awarded at the University of Missouri–St. Louis, since 2010

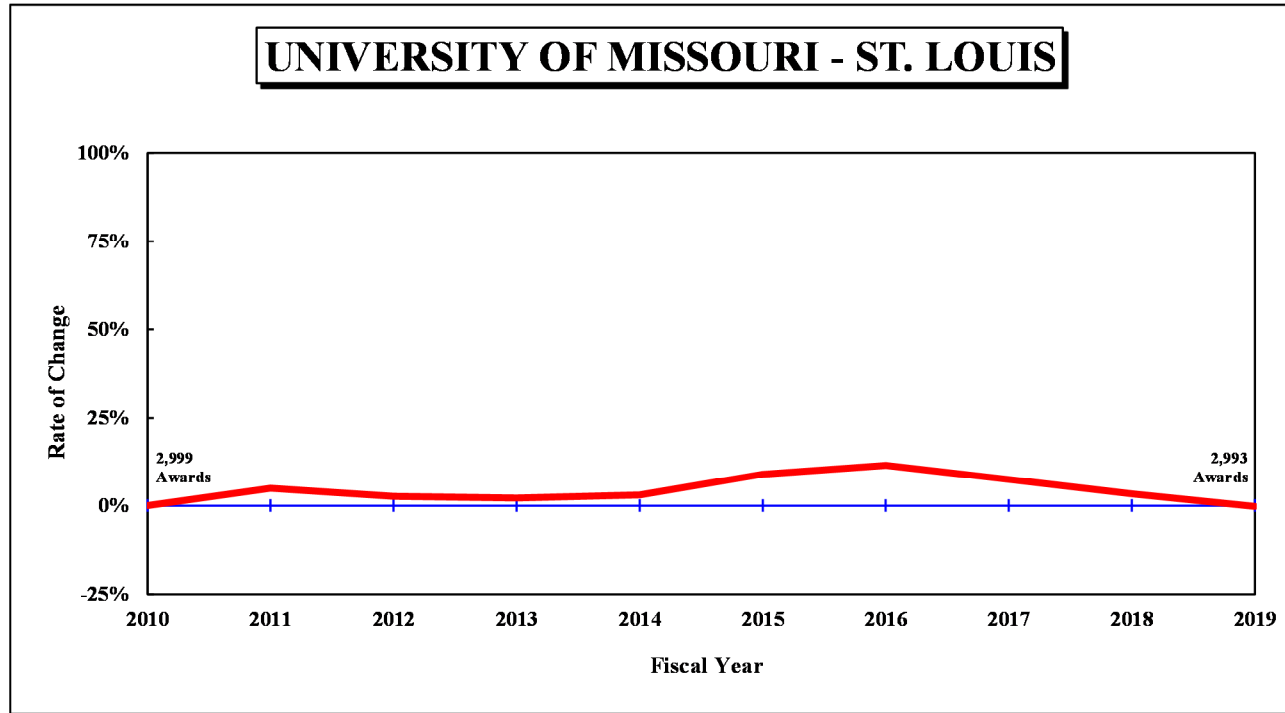


Table 1.4: Degrees and Certificates Awarded at the University of Missouri–St. Louis, July 1, 2009 through June 30, 2019

DEGREE	FY	FY	FY	FY	FY	FY	FY	FY	FY	FY	3-Year	Average			Change in FY19 relative to the 10-Year Avg.
	2010	2011	2012	2013	2014	2015	2016	2017	2018	2019		5-Year	10-Year		
<b>UNIVERSITY OF MISSOURI - ST. LOUIS</b>															
Undergrad. Certificate				2	20	34	29	37	35	68	46.7	40.6	N/A		
Bachelors	2,011	2,092	1,963	1,974	2,020	2,246	2,252	2,071	1,988	1,921	1,993.3	2,095.6	2,053.8	-6%	
Graduate Certificate	82	71	96	88	80	87	116	123	121	122	122.0	113.8	98.6	24%	
First Professional	41	44	47	40	39	41	45	43	39	39	40.3	41.4	41.8	-7%	
Masters	771	868	872	871	854	761	810	826	819	728	791.0	788.8	818.0	-11%	
Education Specialist	31	22	26	28	13	14	17	17	9	23	16.3	16.0	20.0	15%	
Doctorate	63	50	74	61	64	84	75	106	87	92	95.0	88.8	75.6	22%	
<b>Total, All Awards</b>	<b>2,999</b>	<b>3,147</b>	<b>3,078</b>	<b>3,064</b>	<b>3,090</b>	<b>3,267</b>	<b>3,344</b>	<b>3,223</b>	<b>3,098</b>	<b>2,993</b>	<b>3,104.7</b>	<b>3,185.0</b>	<b>3,130.3</b>	<b>-4%</b>	



Figure 2.0: Rate of Change in Total Degrees Awarded, since 2010

UNIVERSITY OF MISSOURI SYSTEM

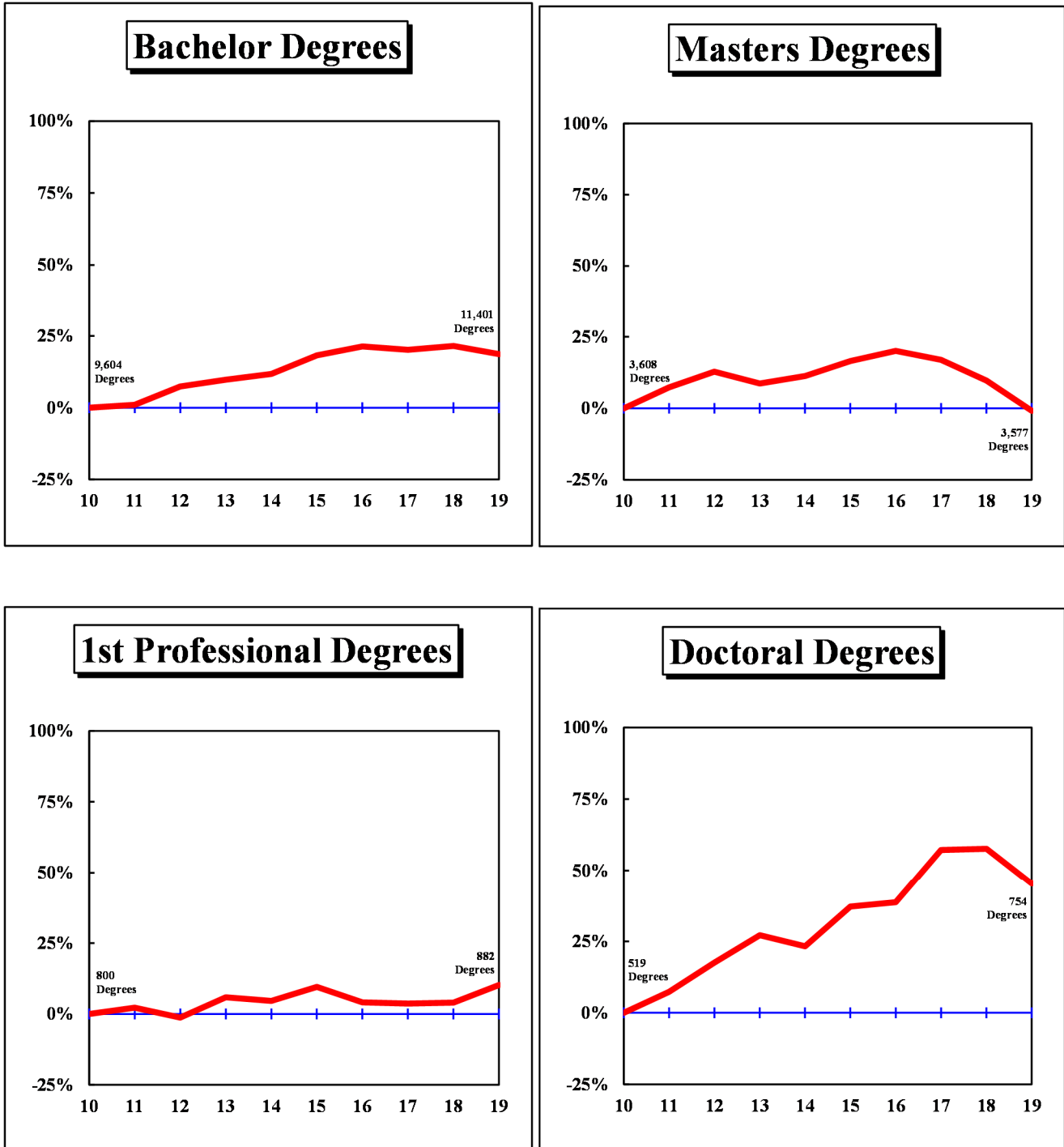


Figure 2.1: Rate of Change in Total Degrees Awarded by Campus, since 2010

UNIVERSITY OF MISSOURI-COLUMBIA

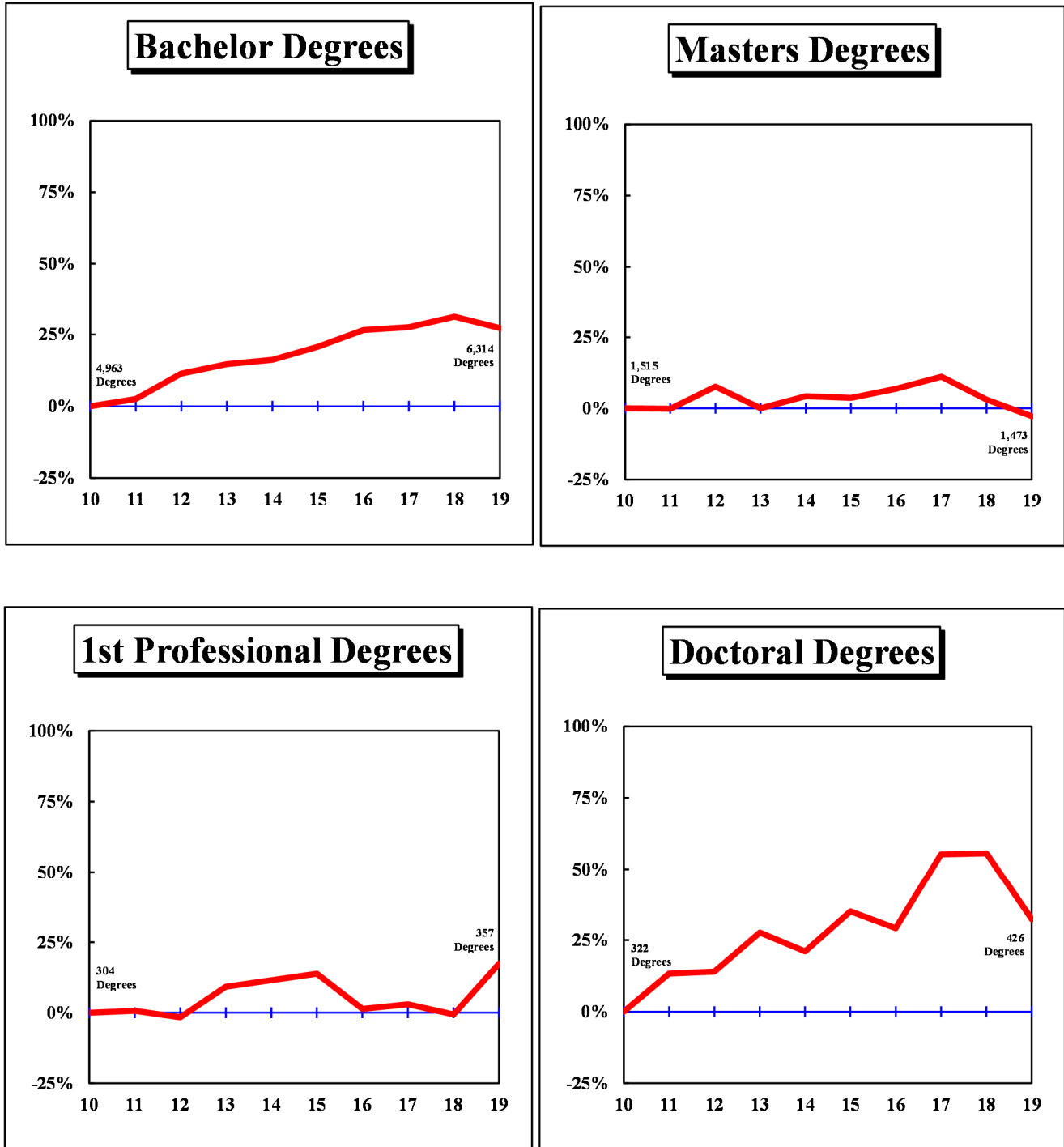


Figure 2.2: Rate of Change in Total Degrees Awarded by Campus, since 2010

UNIVERSITY OF MISSOURI-KANSAS CITY

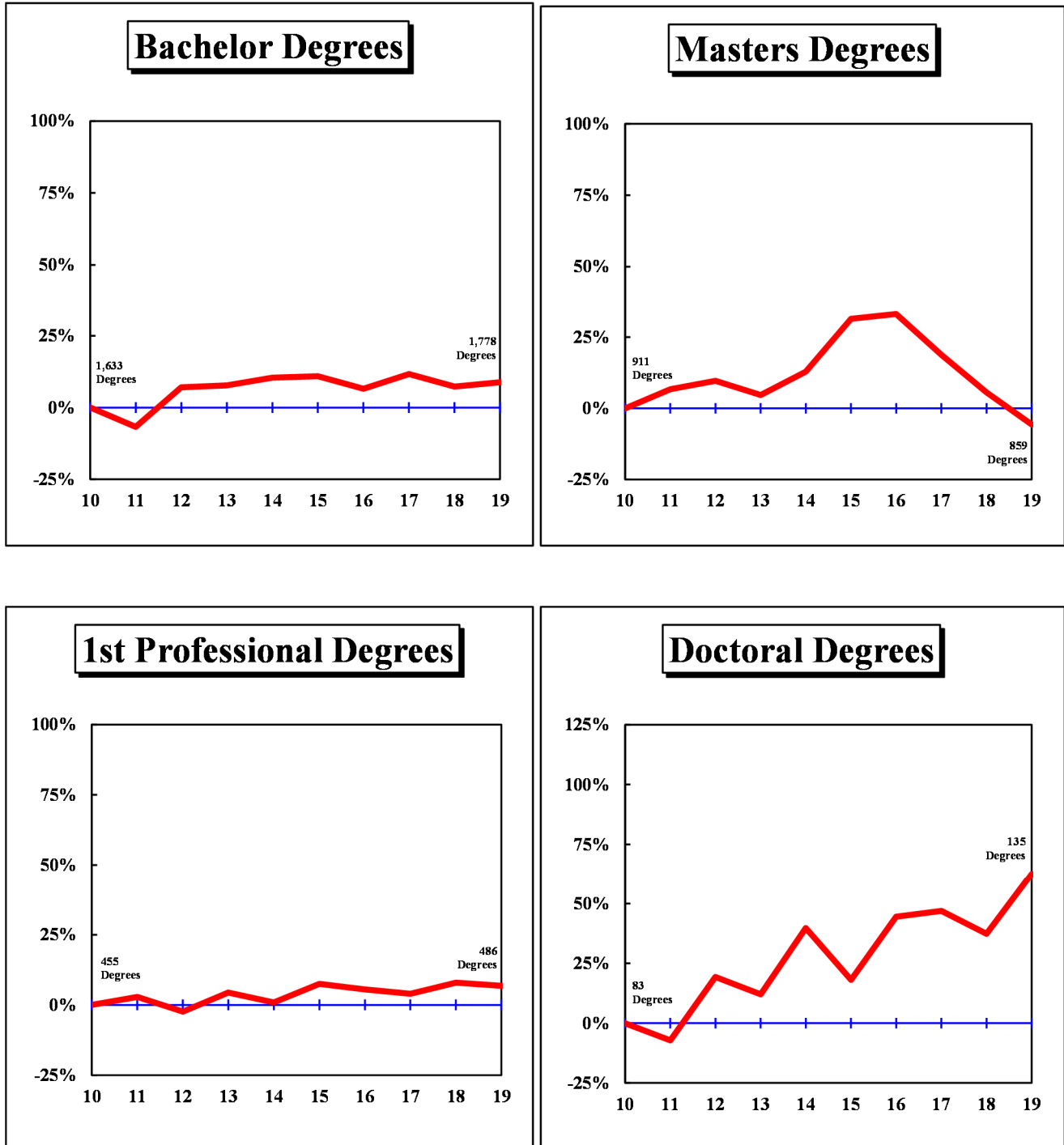


Figure 2.3: Rate of Change in Total Degrees Awarded by Campus, since 2010

MISSOURI UNIVERSITY OF SCIENCE AND TECHNOLOGY

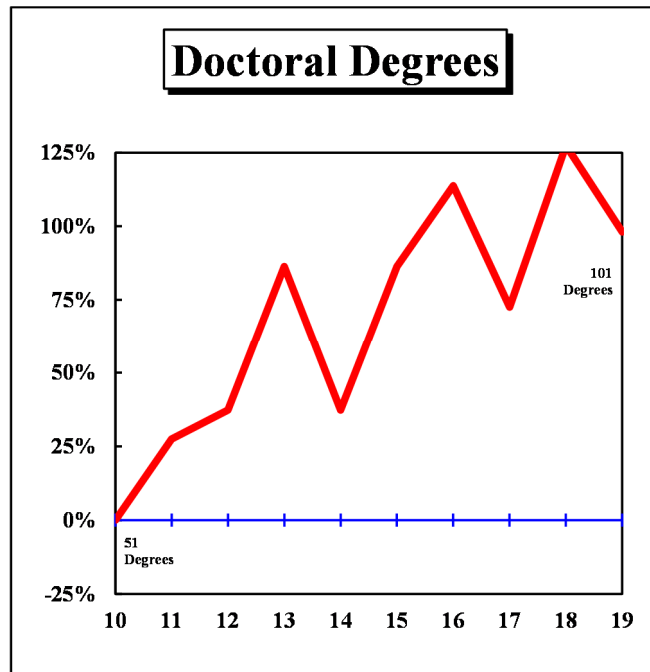
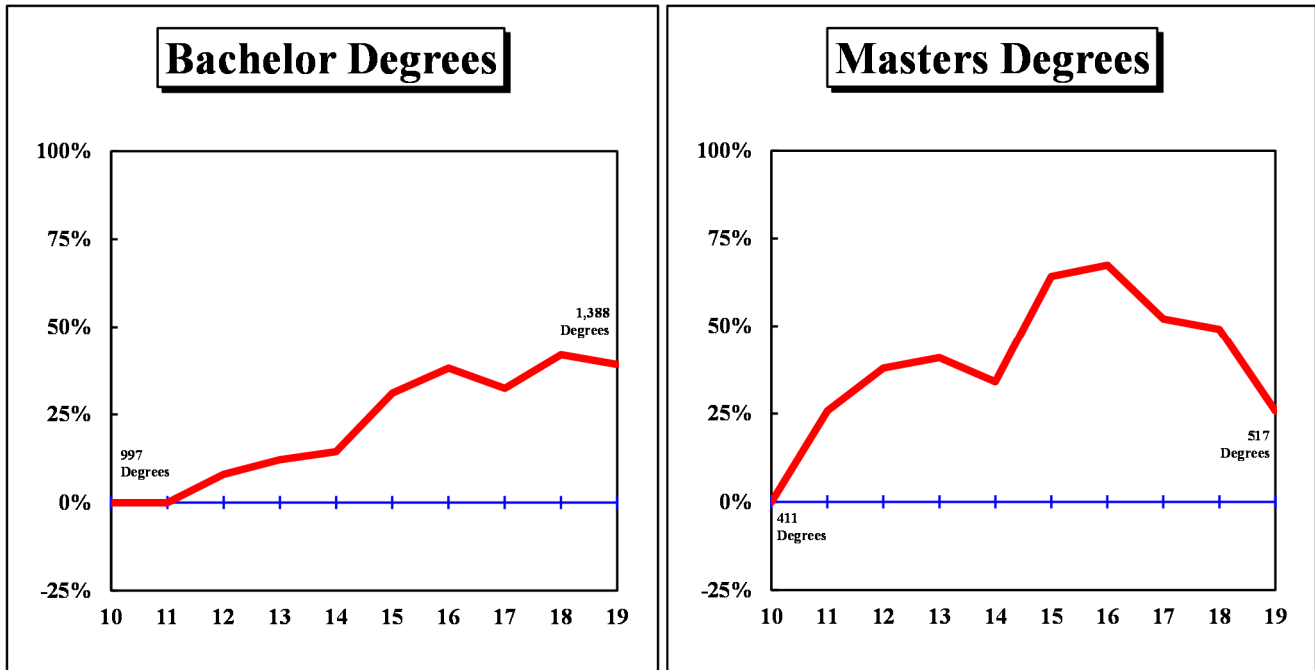
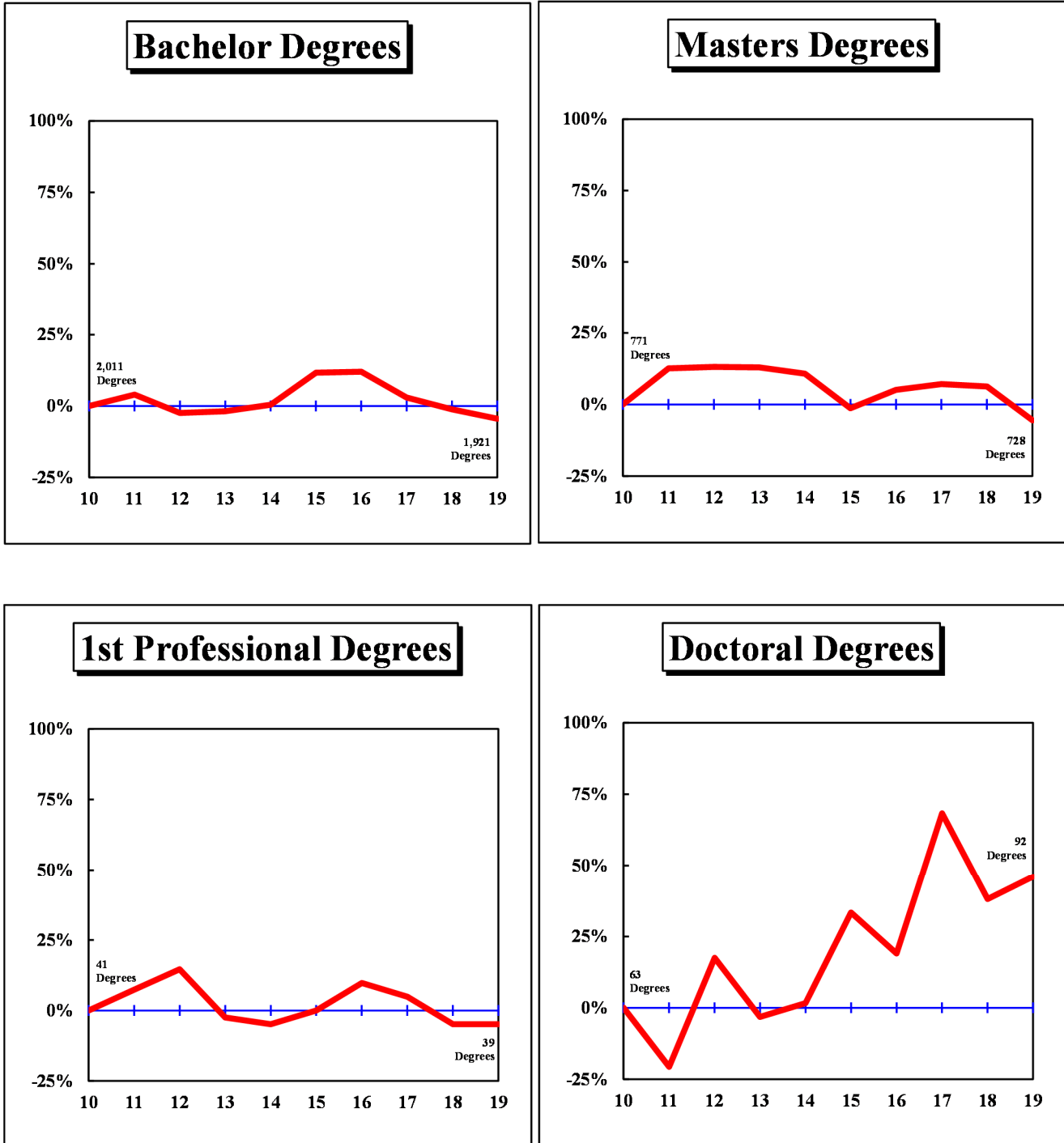


Figure 2.4: Rate of Change in Total Degrees Awarded by Campus, since 2010

UNIVERSITY OF MISSOURI–ST. LOUIS



**Table 2.1: Degrees and Certificates Awarded by Colleges at the University of Missouri–Columbia**

COLLEGE/DEGREE	FY 2010	FY 2011	FY 2012	FY 2013	FY 2014	FY 2015	FY 2016	FY 2017	FY 2018	FY 2019	3-Year	Average 5-Year	10-Year	Change in FY19 relative to the 10-Year Avg.
<b>AGRICULTURE, FOOD, AND NATURAL RESOURCES, COLLEGE OF</b>														
Bachelors	383	400	432	491	460	491	528	529	547	451	509.0	509.2	471.2	-4%
Masters	38	45	51	44	68	38	63	47	49	44	46.7	48.2	48.7	-10%
Doctorate	28	27	24	34	35	33	28	40	37	39	38.7	35.4	32.5	20%
All	449	472	507	569	563	562	619	616	633	534	594.3	592.8	552.4	-3%
<b>ARTS AND SCIENCE, COLLEGE OF</b>														
Bachelors	1,744	1,812	1,961	2,046	1,902	1,963	1,913	1,962	1,994	1,882	1,946.0	1,942.8	1,917.9	-2%
Masters	144	176	169	168	209	197	182	179	247	222	216.0	205.4	189.3	17%
Doctorate	104	98	119	106	113	141	124	120	147	139	135.3	134.2	121.1	15%
All	1,992	2,086	2,249	2,320	2,224	2,301	2,219	2,261	2,388	2,243	2,297.3	2,282.4	2,228.3	1%
<b>BUSINESS, COLLEGE OF</b>														
Bachelors	900	838	824	786	785	776	829	939	1,026	901	955.3	894.2	860.4	5%
Grad. Certif.	15	27	23	21	24	25	19	38	108	142	96.0	66.4	44.2	221%
Masters	237	220	217	231	229	242	222	241	223	235	233.0	232.6	229.7	2%
Doctorate	4	6	10	8	8	5	11	6	6	7	6.3	7.0	7.1	-1%
All	1,156	1,091	1,074	1,046	1,046	1,048	1,081	1,224	1,363	1,285	1,290.7	1,200.2	1,141.4	13%
<b>EDUCATION, COLLEGE OF</b>														
Bachelors	239	246	274	284	305	280	307	227	245	254	242.0	262.6	266.1	-5%
Masters	502	495	532	464	418	464	457	480	416	400	432.0	443.4	462.8	-14%
Ed. Specialist	59	53	43	63	65	82	51	56	40	59	51.7	57.6	57.1	3%
Doctorate	74	84	79	117	73	83	74	102	88	85	91.7	86.4	85.9	-1%
All	874	878	928	928	861	909	889	865	789	798	817.3	850.0	871.9	-8%
<b>ENGINEERING, COLLEGE OF</b>														
Bachelors	398	422	518	472	490	596	693	629	696	742	689.0	671.2	565.6	31%
Masters	78	109	100	120	131	165	136	157	144	98	133.0	140.0	123.8	-21%
Doctorate	24	44	32	32	43	37	36	46	53	41	46.7	42.6	38.8	6%
All	500	575	650	624	664	798	865	832	893	881	868.7	853.8	728.2	21%
<b>HEALTH PROFESSIONS, SCHOOL OF</b>														
Bachelors	176	242	345	426	549	600	702	730	710	788	742.7	706.0	526.8	50%
First Profes.										58	N/A	N/A	N/A	
Masters	48	40	55	51	58	60	54	66	135	122	107.7	87.4	68.9	77%
Doctorate	36	43	38	45	43	44	45	58	56	3	N/A	N/A	N/A	
All	260	325	438	522	650	704	801	854	901	971	908.7	782.0	642.6	51%

**Table 2.1: Degrees and Certificates Awarded by Colleges at the University of Missouri–Columbia (continued)**

COLLEGE/DEGREE	FY 2010	FY 2011	FY 2012	FY 2013	FY 2014	FY 2015	FY 2016	FY 2017	FY 2018	FY 2019	3-Year	Average 5-Year	10-Year	Change in FY19 relative to the 10-Year Avg.
<b>HUMAN ENVIRONMENTAL SCIENCES, COLLEGE OF</b>														
Bachelors	274	275	279	309	318	269	282	336	323	312	323.7	304.4	297.7	5%
Masters	17	30	34	28	26	41	38	36	32	41	36.3	37.6	32.3	27%
Doctorate	8	12	7	9	11	20	12	13	13	14	13.3	14.4	11.9	18%
All	299	317	320	346	355	330	332	385	368	367	373.3	356.4	341.9	7%
<b>JOURNALISM, SCHOOL OF</b>														
Bachelors	521	510	534	504	520	483	549	545	540	533	539.3	530.0	523.9	2%
Masters	112	88	111	73	91	67	103	80	94	82	85.3	85.2	90.1	-9%
Doctorate	8	12	10	8	6	8	7	5	13	6	8.0	7.8	8.3	-28%
All	641	610	655	585	617	558	659	630	647	621	632.7	623.0	622.3	0%
<b>LAW, SCHOOL OF</b>														
Grad. Certif.	37	39	26	41	25	21	20	16	24	14	18.0	19.0	26.3	-47%
First Profes.	141	144	142	133	132	132	114	101	94	93	96.0	106.8	122.6	-24%
Masters	7	19	8	14	8	12	7	6	3	10	6.3	7.6	9.4	6%
All	185	202	176	188	165	165	141	123	121	117	120.3	133.4	158.3	-26%
<b>MEDICINE, SCHOOL OF</b>														
First Profes.	99	93	87	98	97	99	87	99	98	95	97.3	95.6	95.2	0%
Masters	41	48	51	42	56	43	65	57	75	53	61.7	58.6	53.1	0%
Doctorate	11	7	14	13	5	9	8	10	10	8	9.3	9.0	9.5	-16%
All	151	148	152	153	158	151	160	166	183	156	168.3	163.2	157.8	-1%
<b>NURSING, SCHOOL OF</b>														
Bachelors	190	193	211	211	217	232	198	203	206	204	204.3	208.6	206.5	-1%
Masters	60	43	43	42	36	29	20	11	15	7	11.0	16.4	30.6	-77%
Doctorate	3	4	4	2	25	31	38	57	53	54	54.7	46.6	27.1	99%
All	253	240	258	255	278	292	256	271	274	265	270.0	271.6	264.2	0%
<b>PUBLIC AFFAIRS, SCHOOL OF</b>														
Masters					60	52	63	86			N/A	N/A	N/A	
Doctorate					2	2	1	3			N/A	N/A	N/A	
All					62	54	64	89			N/A	N/A	N/A	

**Table 2.1: Degrees and Certificates Awarded by Colleges at the University of Missouri–Columbia (continued)**

COLLEGE/DEGREE	FY 2010	FY 2011	FY 2012	FY 2013	FY 2014	FY 2015	FY 2016	FY 2017	FY 2018	FY 2019	3-Year	Average 5-Year	10-Year	Change in FY19 relative to the 10-Year Avg.
<b>SOCIAL WORK, SCHOOL OF</b>														
Bachelors	42	42	37	42	33	40	50	32	36	34	34.0	38.4	38.8	-12%
Masters	129	51	97	87	70	71	76	91	75	79	81.7	78.4	82.6	-4%
Doctorate	4	3	2	1	3	2	3	2	2	2	2.0	2.2	2.4	-17%
All	175	96	136	130	106	113	129	125	113	115	117.7	119.0	123.8	-7%
<b>VETERINARY MEDICINE, COLLEGE OF</b>														
First Profes.	64	69	70	101	110	115	107	113	110	111	111.3	111.2	97.0	14%
Masters	7	8	9	5	9	5	8	10	11	13	11.3	9.4	8.5	53%
Doctorate	1	5	2	2	3	0	2	5	0	2	2.3	1.8	2.2	-9%
All	72	82	81	108	122	120	117	128	121	126	125.0	122.4	107.7	17%
<b>GRADUATE STUDIES</b>														
Grad. Certif.	90	96	130	163	177	193	186	212	230	230	224.0	210.2	170.7	35%
Masters	74	115	126	124	81	64	85	94	22	42	52.7	61.4	82.7	-49%
Doctorate	12	13	18	24	17	15	20	20	19	18	19.0	18.4	17.6	2%
All	176	224	274	311	275	272	291	326	271	290	295.7	290.0	271.0	7%
<b>OTHER UNDERGRADUATE STUDIES</b>														
U-Grad. Certif.										1,761	N/A	N/A	N/A	

In FY 2014, Public Affairs moved from Graduate Studies.

In FY 2018, Public Affairs moved to Arts & Sciences.



**Table 2.2: Degrees and Certificates Awarded by Colleges at the University of Missouri–Kansas City**

COLLEGE/DEGREE	FY 2010	FY 2011	FY 2012	FY 2013	FY 2014	FY 2015	FY 2016	FY 2017	FY 2018	FY 2019	3-Year	Average 5-Year	10-Year	Change relative 10-Year
<b>ARTS AND SCIENCES, COLLEGE OF</b>														
U-Grad. Certif.						7	6	11	24	29	21.3	15.4	N/A	
Bachelors	931	813	934	877	895	844	766	872	784	731	795.7	799.4	844.7	-13%
Grad. Certif.	0	0	1	1	3	6	15	2	6	11	6.3	8.0	4.5	144%
Masters	173	210	252	184	227	228	211	189	184	191	188.0	200.6	204.9	-7%
Doctorate	4	2	3	2	7	3	3	5	4	3	4.0	3.6	3.6	-17%
All	1,108	1,025	1,190	1,064	1,132	1,088	1,001	1,079	1,002	965	1,015.3	1,027.0	1,065.4	-9%
<b>BIOLOGICAL SCIENCES, SCHOOL OF</b>														
Bachelors	84	71	95	101	99	86	87	101	127	158	128.7	111.8	100.9	57%
Masters	23	21	26	26	24	22	12	12	6	8	8.7	12.0	18.0	-56%
All	107	92	121	127	123	108	99	113	133	166	137.3	123.8	118.9	40%
<b>COMPUTING AND ENGINEERING, SCHOOL OF</b>														
Bachelors	95	82	103	118	105	124	163	178	164	219	187.0	169.6	135.1	62%
Grad. Certif.				1	2	3	2	1	2	4	2.3	2.4	N/A	
Masters	135	194	121	122	124	274	446	391	307	223	307.0	328.2	233.7	-5%
All	230	276	224	241	231	401	611	570	473	446	496.3	500.2	370.3	20%
<b>DENTISTRY, SCHOOL OF</b>														
Bachelors	31	34	35	36	30	34	30	35	33	33	33.7	33.0	33.1	0%
Grad. Certif.	17	17	17	17	17	17	17	17	12	14	14.3	15.4	16.2	-14%
First Profes.	96	98	99	106	103	104	105	105	114	105	108.0	106.6	103.5	1%
Masters	7	9	9	10	4	7	6	5	10	4	6.3	6.4	7.1	-44%
All	151	158	160	169	154	162	158	162	169	156	162.3	161.4	159.9	-2%
<b>EDUCATION, SCHOOL OF</b>														
Bachelors	116	107	113	108	112	87	66	53	40	32	41.7	55.6	83.4	-62%
Grad. Certif.			0	0	3	4	18	2	2	0	1.3	5.2	N/A	
Masters	152	131	144	156	152	175	152	122	85	87	98.0	124.2	135.6	-36%
Ed. Specialist	33	25	35	24	35	26	32	20	18	24	20.7	24.0	27.2	-12%
Doctorate	5	4	13	9	21	11	13	8	11	17	12.0	12.0	11.2	52%
All	306	267	305	297	323	303	281	205	156	160	173.7	221.0	260.3	-39%

**Table 2.2: Degrees and Certificates Awarded by Colleges at the University of Missouri–Kansas City (continued)**

COLLEGE/DEGREE	FY 2010	FY 2011	FY 2012	FY 2013	FY 2014	FY 2015	FY 2016	FY 2017	FY 2018	FY 2019	3-Year	Average 5-Year	10-Year	Change in FY19 relative to the 10-Year Avg.
<b>GRADUATE STUDIES, SCHOOL OF</b>														
Grad. Certif.	0	2	5	2	2	5	9	9	13	13	11.7	9.8	6.0	117%
Doctorate	32	31	42	45	55	47	48	47	39	41	42.3	44.4	42.7	-4%
All	32	33	47	47	57	52	57	56	52	54	54.0	54.2	48.7	11%
<b>LAW, SCHOOL OF</b>														
First Profes.	156	156	150	159	141	141	159	141	131	137	136.3	141.8	147.1	-7%
Masters	32	30	18	33	29	29	25	21	22	15	19.3	22.4	25.4	-41%
All	188	186	168	192	170	170	184	162	153	152	155.7	164.2	172.5	-12%
<b>MANAGEMENT, SCHOOL OF</b>														
Bachelors	192	207	228	231	276	315	307	303	321	320	314.7	313.2	270.0	19%
Grad. Certif.				0	0	2	3	3	4	0	2.3	2.4	N/A	
Masters	254	257	276	263	292	288	248	237	204	195	212.0	234.4	251.4	-22%
Doctorate			0	1	1	0	2	2	1	1	1.3	1.2	N/A	
All	446	464	504	495	569	605	560	545	530	516	530.3	551.2	523.4	-1%
<b>MEDICINE, SCHOOL OF</b>														
Grad. Certif.	0	0	1	5	0	6	6	11	3	3	5.7	5.8	3.5	
First Profes.	92	101	89	88	90	119	94	103	110	95	102.7	104.2	98.1	-3%
Masters	4	4	7	12	21	22	37	46	41	45	44.0	38.2	23.9	88%
All	96	105	97	105	111	147	137	160	154	143	152.3	148.2	125.5	14%
<b>MUSIC AND DANCE, CONSERVATORY OF</b>														
Bachelors	70	47	65	64	43	62	52	56	46	59	53.7	55.0	56.4	5%
Grad. Certif.	1	5	5	7	6	7	1	3	10	3	5.3	4.8	4.8	-38%
Masters	56	38	39	42	25	36	49	27	51	42	40.0	41.0	40.5	4%
Doctorate	20	21	16	21	18	14	26	20	20	28	22.7	21.6	20.4	37%
All	147	111	125	134	92	119	128	106	127	132	121.7	122.4	122.1	8%
<b>NURSING AND HEALTH STUDIES, SCHOOL OF</b>														
Bachelors	107	148	167	217	239	260	270	226	238	226	230.0	244.0	209.8	8%
Grad. Certif.									2	16	N/A	N/A	N/A	
Masters	74	78	107	106	130	116	27	32	52	49	44.3	55.2	77.1	-36%
Doctorate	22	19	25	15	14	23	28	40	39	45	41.3	35.0	27.0	67%
All	203	245	299	338	383	399	325	298	331	336	321.7	337.8	315.7	6%

**Table 2.2: Degrees and Certificates Awarded by Colleges at the University of Missouri–Kansas City (continued)**

COLLEGE/DEGREE	FY 2010	FY 2011	FY 2012	FY 2013	FY 2014	FY 2015	FY 2016	FY 2017	FY 2018	FY 2019	3-Year	<u>Average</u> 5-Year	10-Year	Change in FY19 relative to the 10-Year Avg.
<b>PHARMACY, SCHOOL OF</b>														
Bachelors	7	14	9	7	4						N/A	N/A	N/A	
First Profes.	111	113	106	122	125	125	122	124	136	149	136.3	131.2	123.3	21%
Masters	1	0	0								N/A	N/A	N/A	
All	119	127	115	129	129	125	122	124	136	149	136.3	131.2	127.5	17%

UM-IR/RS 8/19

**Table 2.3: Degrees and Certificates Awarded by Colleges at the Missouri University of Science and Technology**

COLLEGE/DEGREE	FY 2010	FY 2011	FY 2012	FY 2013	FY 2014	FY 2015	FY 2016	FY 2017	FY 2018	FY 2019	3-Year	Average 5-Year	10-Year	Change in FY19 relative to the 10-Year Avg.
<b>ARTS, SCIENCES, AND BUSINESS, COLLEGE OF</b>														
U-Grad. Certif.									1	0	N/A	N/A	N/A	
Bachelors						292	287	259	219	225	234.3	256.4	N/A	
Grad. Certif.						39	43	62	70	57	63.0	54.2	N/A	
Masters						88	90	80	80	61	73.7	79.8	N/A	
Doctorate						16	24	17	25	10	17.3	18.4	N/A	
All						435	444	418	395	353	388.7	409.0	N/A	
<b>ENGINEERING AND COMPUTING, COLLEGE OF</b>														
U-Grad. Certif.						14	9	8	6	11	8.3	9.6	N/A	
Bachelors						1,015	1,091	1,061	1,197	1,163	1,140.3	1,105.4	N/A	
Grad. Certif.						365	384	370	440	397	402.3	391.2	N/A	
Masters						587	598	545	533	456	511.3	543.8	N/A	
Doctorate						79	85	71	91	91	84.3	83.4	N/A	
All						2,060	2,167	2,055	2,267	2,118	2,146.7	2,133.4	N/A	

In FY 2008, Missouri University of Science and Technology (formally University of Missouri-Rolla) eliminated the positions of College/School Dean.  
 In FY 2015, the positions of College/School Dean were reestablished.

**Table 2.4: Degrees and Certificates Awarded by Colleges at the University of Missouri–St. Louis**

COLLEGE/DEGREE	FY 2010	FY 2011	FY 2012	FY 2013	FY 2014	FY 2015	FY 2016	FY 2017	FY 2018	FY 2019	3-Year	Average 5-Year	10-Year	Change in FY19 relative to the 10-Year Avg.
<b>ARTS AND SCIENCES, COLLEGE OF</b>														
U-Grad. Certif.				2	20	33	29	36	35	66	45.7	39.8	N/A	
Bachelors	763	772	763	791	792	913	924	927	923	914	921.3	920.2	848.2	8%
Grad. Certif.	35	20	30	27	9	23	15	17	10	15	14.0	16.0	20.1	-25%
Masters	241	241	243	237	210	199	196	181	187	139	169.0	180.4	207.4	-33%
Doctorate	35	24	33	29	36	32	29	35	39	27	33.7	32.4	31.9	-15%
All	1,074	1,057	1,069	1,086	1,067	1,200	1,193	1,196	1,194	1,161	1,183.7	1,188.8	1,129.7	3%
<b>BUSINESS ADMINISTRATION, COLLEGE OF</b>														
U-Grad. Certif.							0	1	0	2	1.0	N/A	N/A	
Bachelors	545	579	505	440	507	516	524	523	534	533	530.0	526.0	520.6	2%
Grad. Certif.	11	13	19	7	16	20	29	35	38	24	32.3	29.2	21.2	13%
Masters	162	171	204	189	185	169	174	226	206	218	216.7	198.6	190.4	14%
Doctorate	2	1	2	0	0	8	3	1	1	3	1.7	3.2	2.1	43%
All	720	764	730	636	708	713	730	786	779	780	781.7	757.6	734.6	6%
<b>EDUCATION, COLLEGE OF</b>														
Bachelors	229	256	223	234	205	198	187	212	145	145	167.3	177.4	203.4	-29%
Grad. Certif.	5	10	21	21	25	23	36	38	33	36	35.7	33.2	24.8	45%
Masters	287	340	301	336	370	308	323	282	276	286	281.3	295.0	310.9	-8%
Ed. Specialist	31	22	26	28	13	14	17	17	9	23	16.3	16.0	20.0	15%
Doctorate	24	21	33	24	21	34	38	62	42	37	47.0	42.6	33.6	10%
All	576	649	604	643	634	577	601	611	505	527	547.7	564.2	592.7	-11%
<b>FINE ARTS AND COMMUNICATION, COLLEGE OF</b>														
U-Grad. Certif.				0	0	1	0				N/A	N/A	N/A	
Bachelors	214	223	207	225	218	247	241				N/A	N/A	N/A	
Masters	22	17	28	4	14	12	13				N/A	N/A	N/A	
All	236	240	235	229	232	260	254				N/A	N/A	N/A	
<b>NURSING, COLLEGE OF</b>														
Bachelors	200	201	206	224	246	284	253	250	237	194	227.0	243.6	229.5	-15%
Grad. Certif.	1	4	2	2	4	2	1	2	10	19	10.3	6.8	4.7	304%
Masters	41	72	63	79	52	55	53	67	89	3	53.0	53.4	57.4	-95%
Doctorate	2	4	6	7	7	9	5	8	5	25	12.7	10.4	7.8	221%
All	244	281	277	312	309	350	312	327	341	241	303.0	314.2	299.4	-20%

**Table 2.4: Degrees and Certificates Awarded by Colleges at the University of Missouri–St. Louis (continued)**

COLLEGE/DEGREE	FY 2010	FY 2011	FY 2012	FY 2013	FY 2014	FY 2015	FY 2016	FY 2017	FY 2018	FY 2019	3-Year	Average 5-Year	10-Year	Change in FY19 relative to the 10-Year Avg.
<b>OPTOMETRY, COLLEGE OF</b>														
First Profes.	41	44	47	40	39	41	45	43	39	39	40.3	41.4	41.8	-7%
Masters	2	1	0	1	1						N/A	N/A	N/A	
Doctorate	0	0	0	1	0	1					N/A	N/A	N/A	
All	43	45	47	42	40	42	45	43	39	39	40.3	41.6	42.5	-8%
<b>SOCIAL WORK, SCHOOL OF</b>														
Bachelors							25	76	90	81	82.3	N/A	N/A	
Masters							33	54	52	71	59.0	N/A	N/A	
All							58	130	142	152	141.3	N/A	N/A	
<b>ENGINEERING PROGRAM</b>														
Bachelors	56	58	58	58	51	88	97	83	59	54	65.3	76.2	66.2	-18%
<b>GRADUATE SCHOOL</b>														
Bachelors	4	3	1	2	1	0	1	0	0	0	0.0	0.2	1.2	-100%
Grad. Certif.	30	24	24	31	26	19	35	31	30	28	29.7	28.6	27.8	1%
Masters	16	26	33	25	22	18	18	16	9	11	12.0	14.4	19.4	-43%
All	50	53	58	58	49	37	54	47	39	39	41.7	43.2	48.4	-19%

In FY 2016, Social Work moved from Arts & Sciences.

In FY 2017, Fine Arts & Communication moved to Arts & Sciences.