

**ENROLLMENT SUMMARY REPORT
FALL 2013**

Dr. La Shonda Carter-Boone
Senior Institutional Research Analyst

Office of Institutional Research & Planning
714 Lewis Hall
University of Missouri System

December 2013

IR&P 2013, Report 4

<http://www.umsystem.edu/ums/aa/planning//>

FALL 2013 ENROLLMENT SUMMARY

Executive Summary

This report summarizes the status and trends in fall enrollment at the University of Missouri's four campuses. The report includes information about enrollment, full-time equivalence, new students on campus, undergraduate transfer students, full/part-time status, gender and ethnicity information.

Please note that enrollment totals in this report follow federal and state guidelines, which recommend that students who are classified as "exclusive auditors" are not included in enrollment figures. Consequently, students who are classified as "exclusive auditors" are not included in the campus totals. (Exclusive auditors are defined as students who are enrolled exclusively in courses that are not taken for credit.)

Highlights of the report include:

- The University of Missouri System enrolled a record 75,272 students in Fall 2013, 228 more students than the record 75,044 students that enrolled in Fall 2012. Total enrollment at the University has increased by 21% over the past 10 years (Table 1).
- In Fall 2013, the University of Missouri System enrolled 56,869 undergraduate students (76% of total headcount), 3,179 first professional students (4%), and 15,224 graduate students (20%) (Table 1).
- Over the past 10 years, undergraduate headcount has increased by 21%, first-professional headcount by 17% and graduate headcount by 22% (Table 1).
- Since 2009, total student credit hours and total full-time equivalence have both increased by 9% (Table 2.0).
- Over the past five years, total full-time resident headcount has increased 3% (Table 4.0a) and total full-time non-resident headcount has increased 39% (Table 4.0b).
- Women comprised 52% of total enrollment in Fall 2013. UM-St. Louis had the largest percentage of women (60%) and MO S&T had the highest proportion of men (77%) (Table 5).
- Of all the students of known ethnicity, under-represented minorities (American Indian/Alaskan Native, African-American, and Hispanic) represented 13% of the University of Missouri System's total enrollment (Table 5).

Technical Notes

These tables provide counts of students enrolled in the fall of 2013 on-schedule credit courses at the four campuses of the University of Missouri. Five and ten-year trend data are included in the tables for comparison purposes. The data used in this report were generated from the EMSAS Fall Enrollment files, which are submitted to the Missouri Department of Higher Education (MDHE) each fall. Data included in EMSAS files were prepared in the admissions and registration offices at the respective campuses. The data are counts as of the census date at each campus, which is defined as the end of the fourth week of classes for the fall session. The source data are based on the reporting guidelines and definitions of the Missouri Department of Higher Education (MDHE) and the National Center for Educational Statistics (NCES).

Tables in the Table 2 series (2.0-2.4) include counts of on- and off-campus students. The columns titled "On-Campus", according to the MDHE guidelines, include students enrolled geographically on campus and students in the Graduate Engineering (Residence) Centers. All other students are counted in the columns headed "Off-Campus", which include students enrolled in extension courses and students that receive H.S. advanced credit from the Kansas City and St. Louis campuses. The tables of the Table 2 series also include full-time equivalence (FTE) counts.

Tables in the Table 4 series (4.0a-4.4b) include counts of resident and non-resident students by level and course load (full-time vs. part-time).

Definitions of FTE:

Undergraduate FTE = Total Student Credit Hours/15

Graduate FTE = Total Student Credit Hours/12

Dentistry FTE = Headcount

Law FTE = Total Student Credit Hours/15

UMC Medicine FTE = Headcount

UMKC Medicine FTE = Headcount

Optometry FTE = Headcount

Pharmacy FTE = Headcount

Vet Medicine FTE = Headcount

Caveats

First- and second-year students in the Medicine MD program at UMKC are included in the undergraduate counts of the Table 2 and Table 4 series.

Enrollment counts for students in "Off-Schedule" courses, which include intersession courses, short courses, Video Credit courses, and other courses which begin and end on dates other than those for the regular academic semester, are accumulated during the term in which the courses began and are reported the semester following their end date.

Figure 1: Rate of Change in Fall Headcount by Student Level and Campus, Fall 2004 to Fall 2013

UNIVERSITY OF MISSOURI SYSTEM

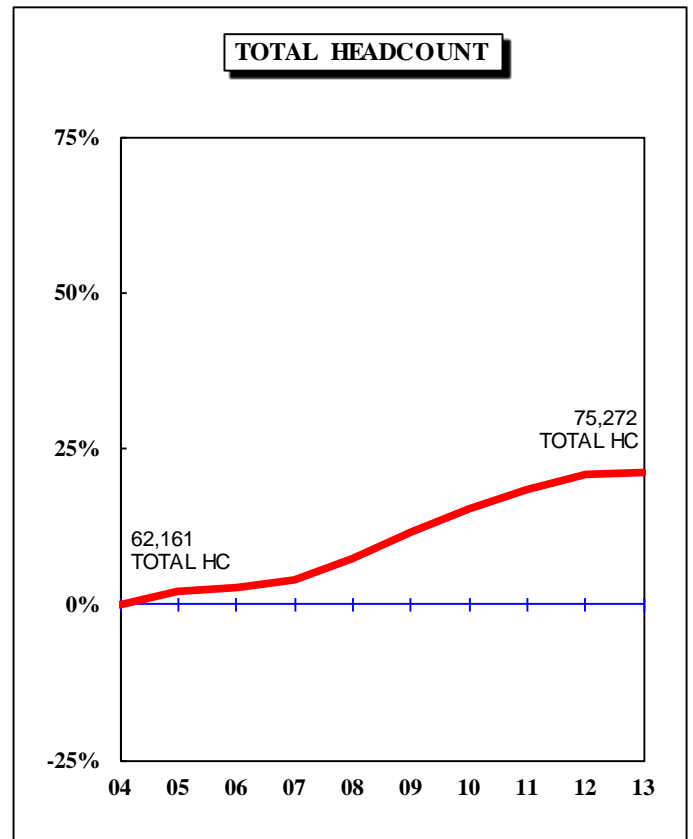
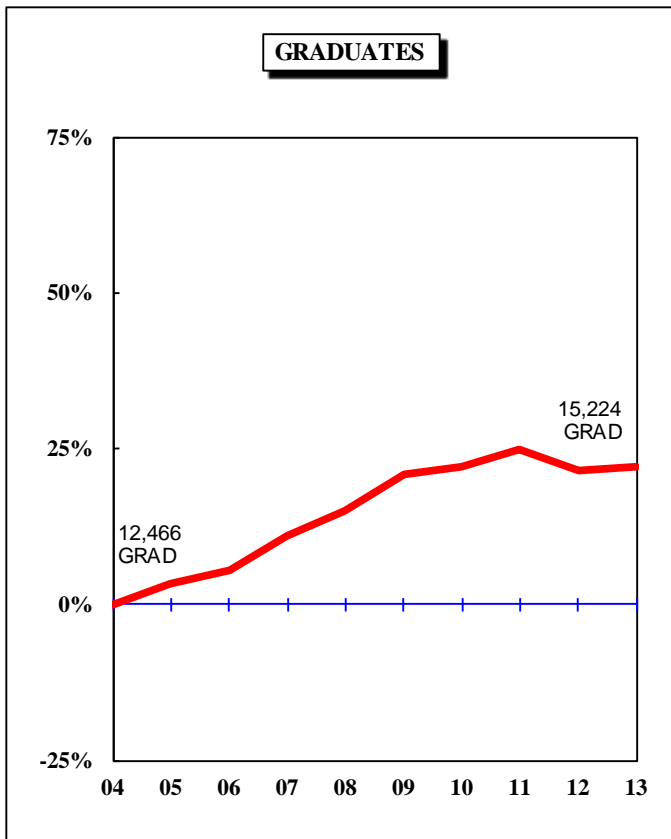
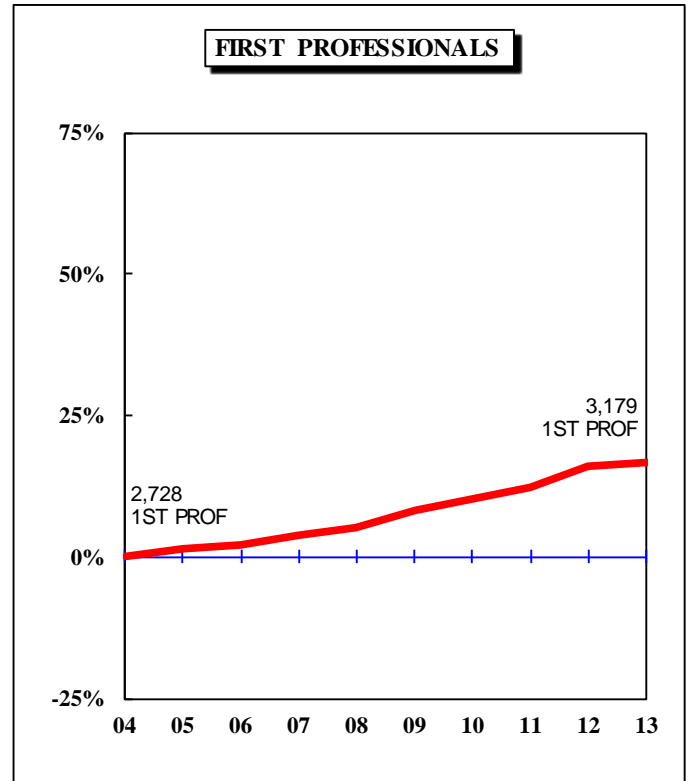
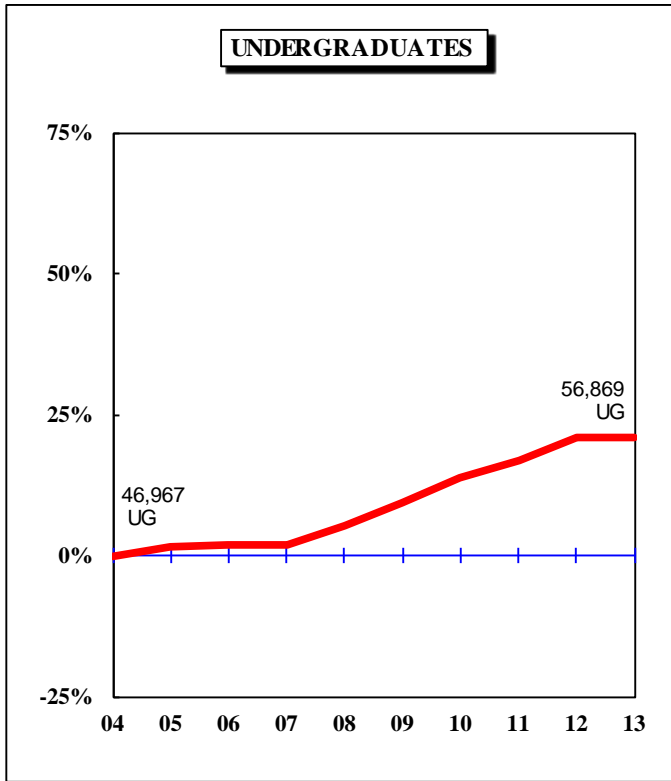


Figure 1.1: Rate of Change in Fall Headcount by Student Level and Campus, Fall 2004 to Fall 2013
UNIVERSITY OF MISSOURI-COLUMBIA

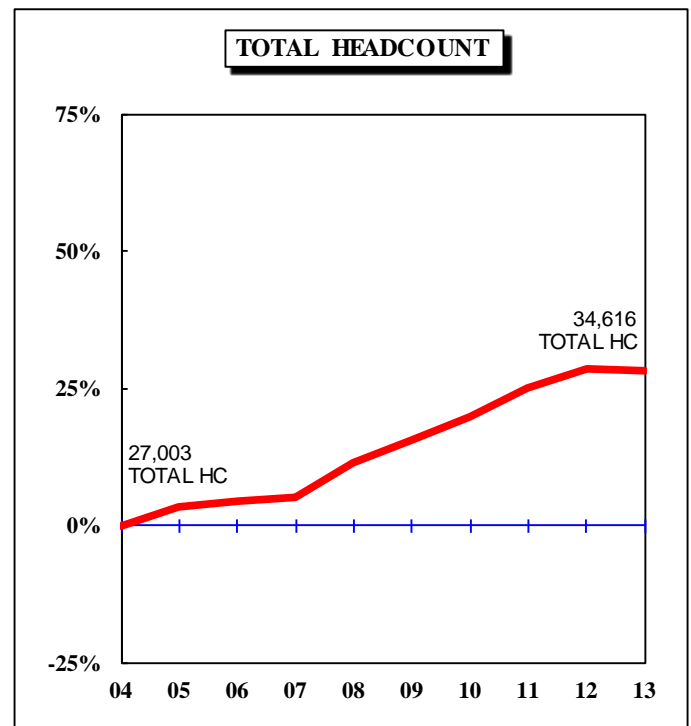
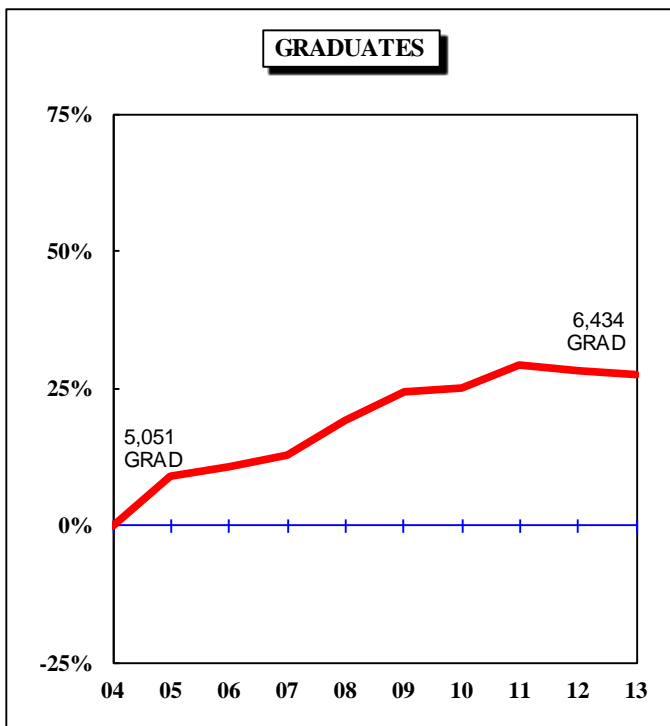
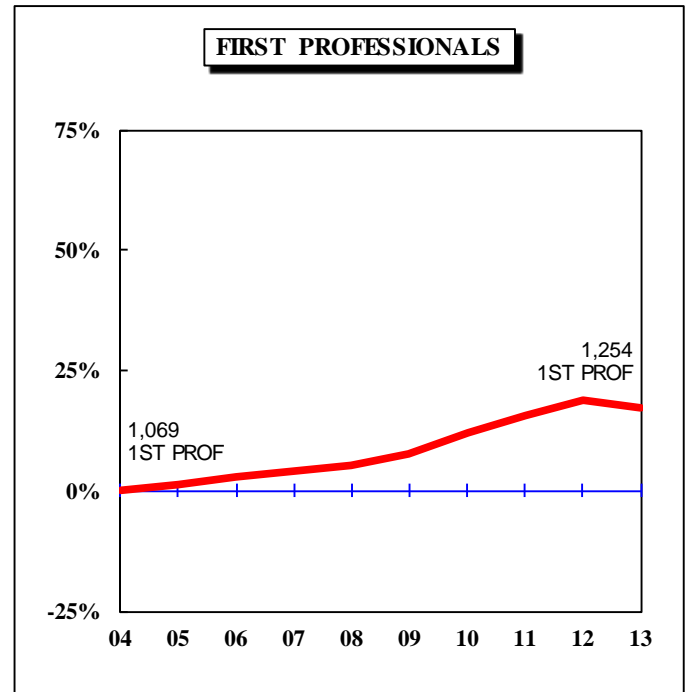
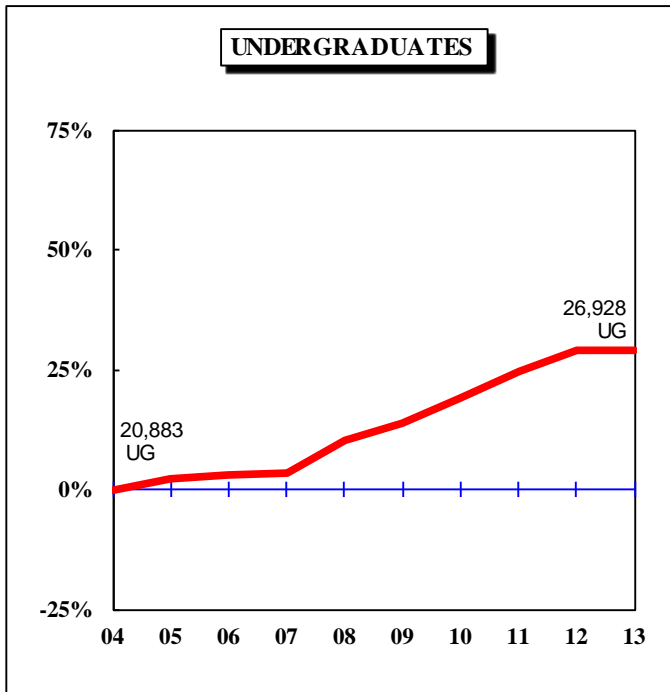


Figure 1.2: Rate of Change in Fall Headcount by Student Level and Campus, Fall 2004 to Fall 2013

UNIVERSITY OF MISSOURI-KANSAS CITY

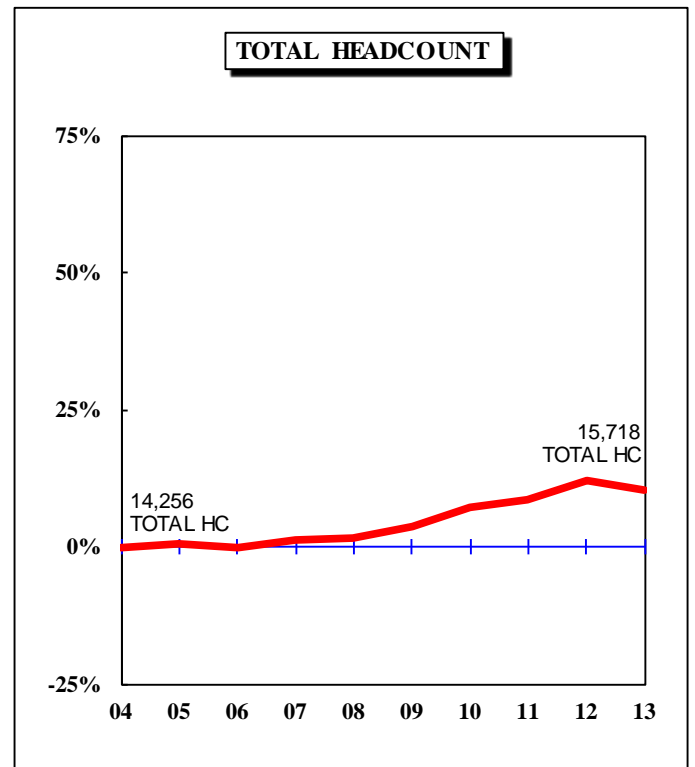
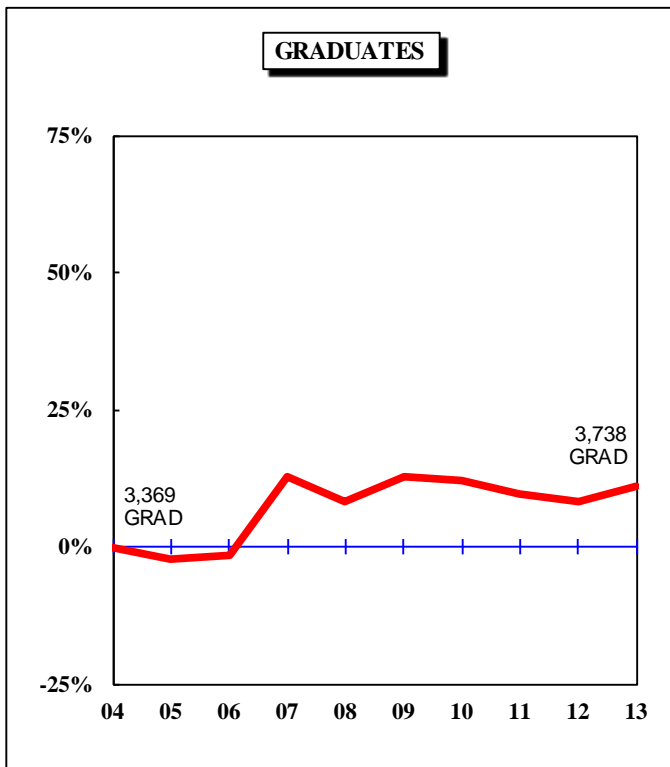
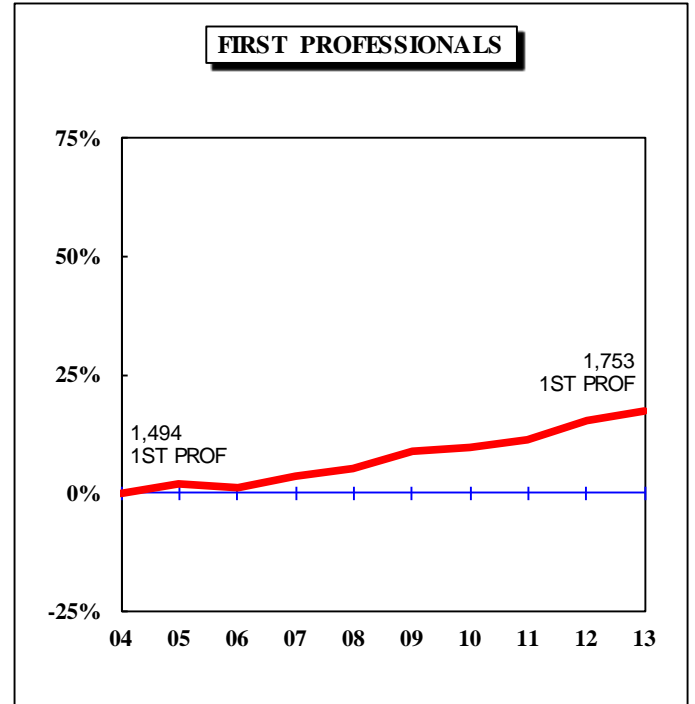
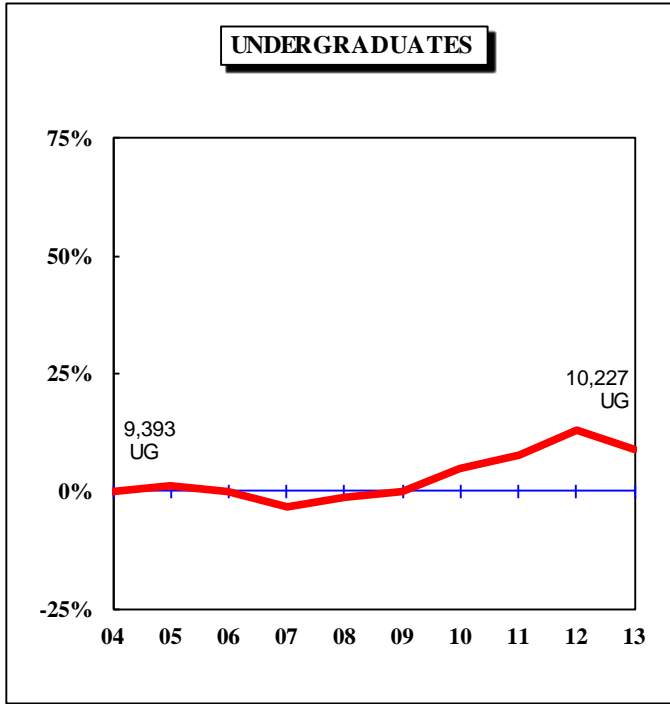


Figure 1.3: Rate of Change in Fall Headcount by Student Level and Campus, Fall 2004 to Fall 2013

MISSOURI S&T

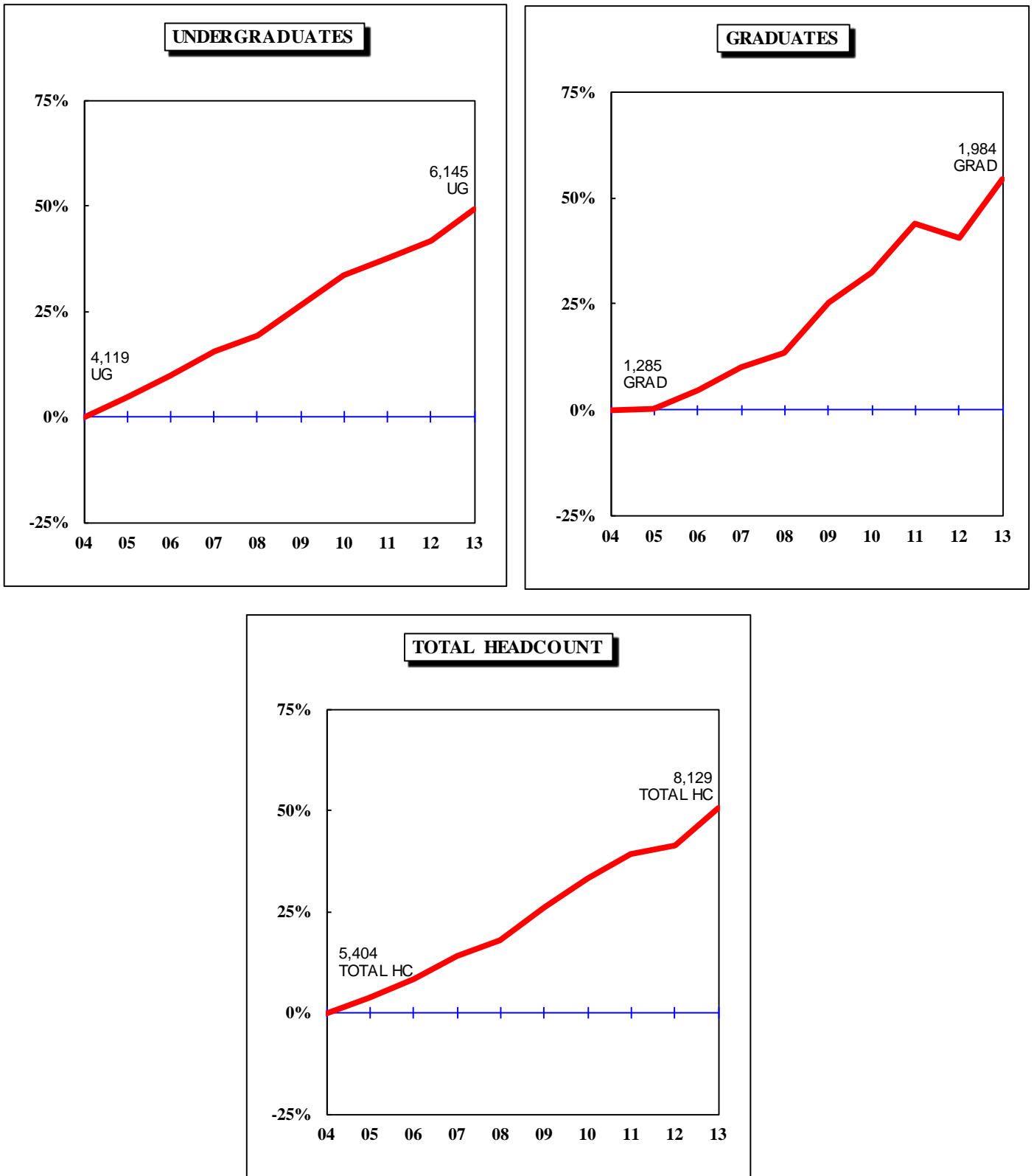


Figure 1.4: Rate of Change in Fall Headcount by Student Level and Campus, Fall 2004 to Fall 2013

UNIVERSITY OF MISSOURI-ST. LOUIS

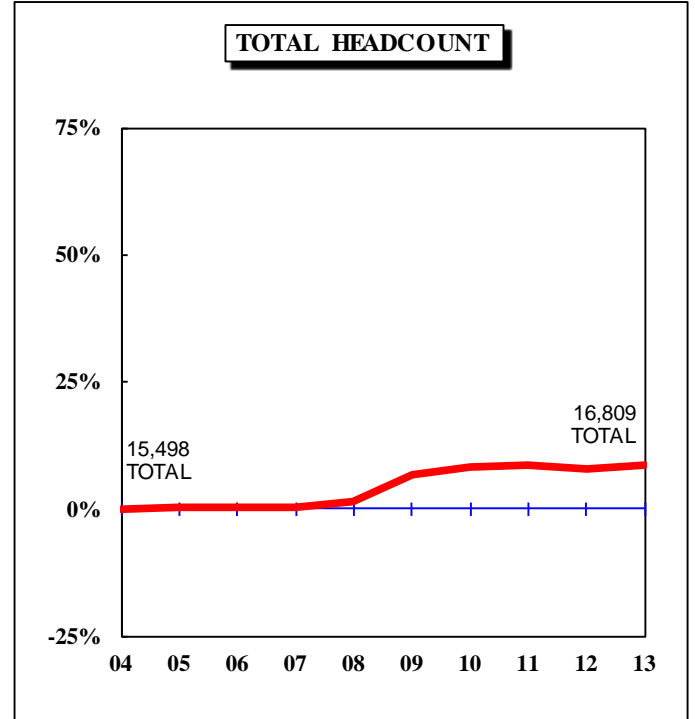
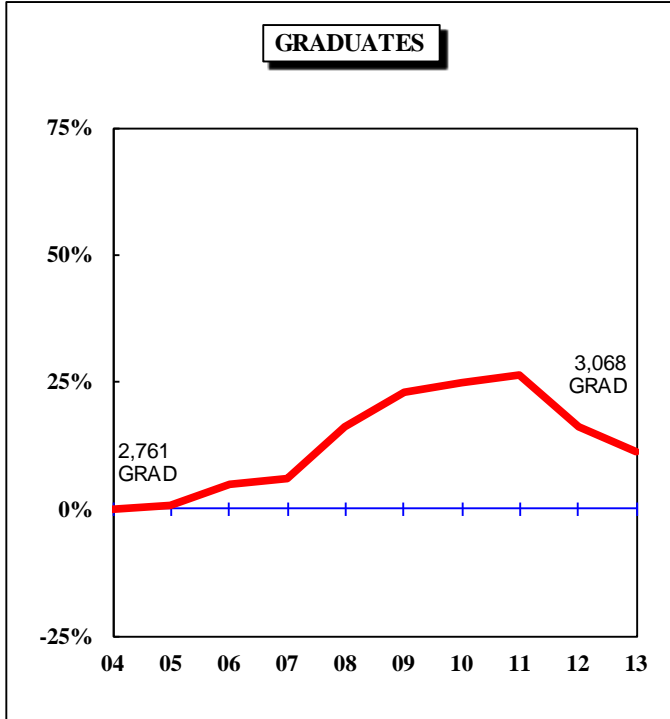
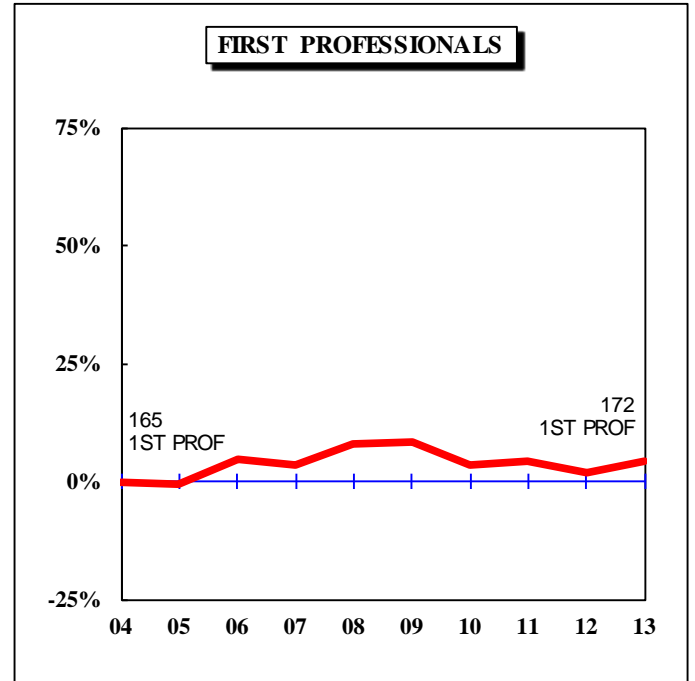
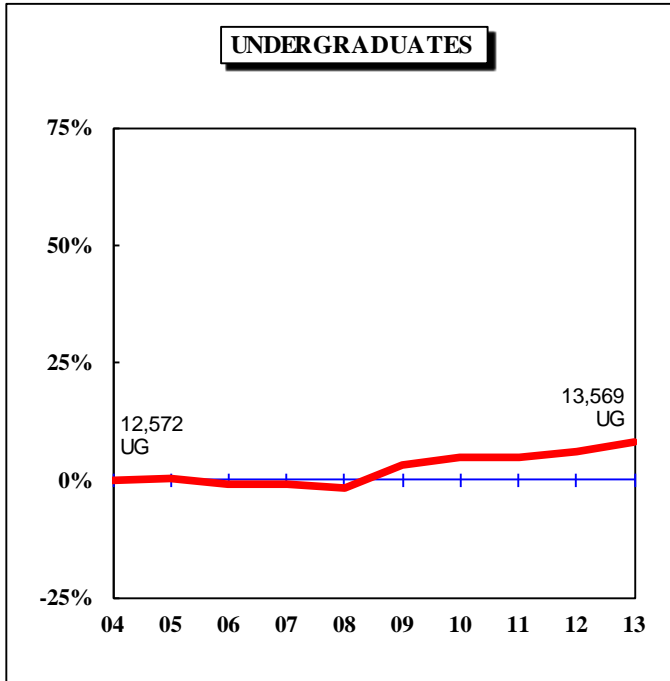
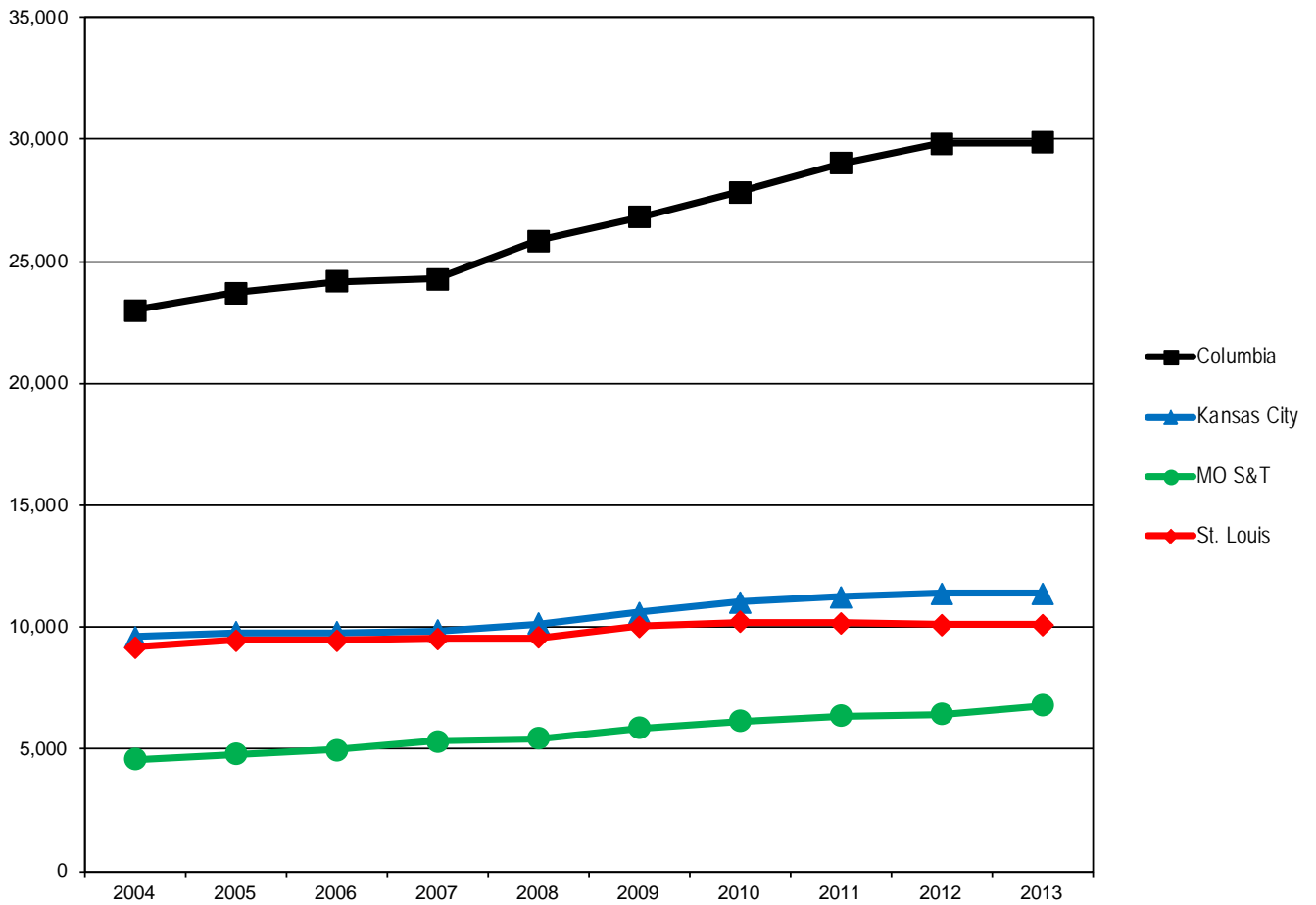


Table 1. Headcount History by Student Level and Campus, Fall 2004 to Fall 2013

Campus	Level	2004	2005	2006	2007	2008	2009	2010	2011	2012	2013	10-yr. Change
Columbia	Undergraduate	20,883	21,335	21,484	21,586	22,980	23,799	24,834	25,992	26,960	26,928	29%
	Professional	1,069	1,083	1,102	1,111	1,126	1,150	1,197	1,236	1,271	1,254	17%
	Graduate	5,051	5,512	5,598	5,708	6,024	6,288	6,310	6,534	6,473	6,434	27%
	Total	27,003	27,930	28,184	28,405	30,130	31,237	32,341	33,762	34,704	34,616	28%
Kansas City	Undergraduate	9,393	9,487	9,383	9,094	9,261	9,381	9,850	10,122	10,614	10,227	9%
	Professional	1,494	1,523	1,509	1,548	1,569	1,623	1,638	1,659	1,725	1,753	17%
	Graduate	3,369	3,296	3,321	3,800	3,651	3,795	3,771	3,692	3,651	3,738	11%
	Total*	14,256	14,306	14,213	14,442	14,481	14,799	15,259	15,473	15,990	15,718	10%
MO S&T	Undergraduate	4,119	4,311	4,515	4,752	4,911	5,206	5,503	5,671	5,841	6,145	49%
	Graduate	1,285	1,289	1,343	1,414	1,456	1,608	1,702	1,850	1,804	1,984	54%
	Total	5,404	5,600	5,858	6,166	6,367	6,814	7,205	7,521	7,645	8,129	50%
St. Louis	Undergraduate	12,572	12,606	12,459	12,432	12,358	12,966	13,171	13,151	13,335	13,569	8%
	Professional	165	164	173	171	178	179	171	172	168	172	4%
	Graduate	2,761	2,778	2,896	2,924	3,205	3,389	3,449	3,486	3,202	3,068	11%
	Total*	15,498	15,548	15,528	15,527	15,741	16,534	16,791	16,809	16,705	16,809	8%
System	Undergraduate	46,967	47,739	47,841	47,864	49,510	51,352	53,358	54,936	56,750	56,869	21%
	Professional	2,728	2,770	2,784	2,830	2,873	2,952	3,006	3,067	3,164	3,179	17%
	Graduate	12,466	12,875	13,158	13,846	14,336	15,080	15,232	15,562	15,130	15,224	22%
	Grand Total	62,161	63,384	63,783	64,540	66,719	69,384	71,596	73,565	75,044	75,272	21%

*The total enrollment for UMKC and UMSL include students taking college credit at their high school through dual credit programs. When these students are excluded from the headcount, the total enrollment for UMKC is 14,134 and the total enrollment for UMSL is 12,548.

Figure 2. Full-time Equivalence History by Campus, 2004 to 2013



Source: EMSAS Fall Enrollment file
IR&P/LCB 10/10/13

Full-time Equivalent History by Campus, 2004 to 2013

Campus	2004	2005	2006	2007	2008	2009	2010	2011	2012	2013
Columbia	23,000.0	23,703.6	24,182.7	24,280.4	25,840.2	26,797.4	27,838.4	29,020.4	29,845.0	29,874.8
Kansas City	9,607.7	9,795.3	9,797.9	9,843.8	10,152.4	10,597.5	11,042.8	11,255.7	11,387.0	11,391.3
MO S&T	4,594.1	4,799.9	4,982.6	5,323.0	5,452.9	5,860.4	6,162.2	6,376.5	6,453.0	6,793.5
St. Louis	9,162.0	9,451.9	9,467.5	9,546.9	9,578.5	10,031.8	10,227.7	10,188.8	10,121.0	10,101.9
Total	46,363.8	47,750.7	48,430.7	48,994.0	51,023.9	53,287.1	55,271.1	56,841.4	57,806.0	58,161.5

(Totals may not add due to rounding.)

Table 2.0 Headcounts, Full-time Equivalence, and Student Credit Hours by Location, Fall 2009 to Fall 2013

University of Missouri System

	On-Campus					Off-Campus					Total					5-yr. Change
	FS09	FS10	FS11	FS12	FS13	FS09	FS10	FS11	FS12	FS13	FS09	FS10	FS11	FS12	FS13	
Headcount by Student Level																
Undergraduate																
Fresh & Soph DS	19,833	20,398	21,047	21,450	21,034	46	66	60	64	37	19,879	20,464	21,107	21,514	21,071	6%
Junior & Senior DS	25,161	26,464	27,168	27,723	28,354	283	389	505	532	461	25,444	26,853	27,673	28,255	28,815	13%
Nondegree	<u>859</u>	<u>822</u>	<u>926</u>	<u>1,038</u>	<u>1,050</u>	<u>5,170</u>	<u>5,219</u>	<u>5,230</u>	<u>5,943</u>	<u>5,933</u>	<u>6,029</u>	<u>6,041</u>	<u>6,156</u>	<u>6,981</u>	<u>6,983</u>	<u>16%</u>
Total Undergraduate	45,853	47,684	49,141	50,211	50,438	5,499	5,674	5,795	6,539	6,431	51,352	53,358	54,936	56,750	56,869	11%
First Professional																
Dentistry (DDS)	401	405	420	425	425	0	0	0	0	0	401	405	420	425	425	6%
Law (JD)	943	932	901	879	873	0	0	0	0	0	943	932	901	879	873	-7%
Medicine (MD)	769	780	798	818	822	0	0	0	0	1	769	780	798	818	823	7%
Optometry (OD)	179	171	172	168	172	0	0	0	0	0	179	171	172	168	172	-4%
Pharmacy (DPharm)	339	352	283	328	328	0	0	80	93	96	339	352	363	421	424	25%
Vet. Med. (DVM)	<u>321</u>	<u>366</u>	<u>413</u>	<u>452</u>	<u>460</u>	<u>0</u>	<u>0</u>	<u>0</u>	<u>1</u>	<u>2</u>	<u>321</u>	<u>366</u>	<u>413</u>	<u>453</u>	<u>462</u>	<u>44%</u>
Total First Professional	2,952	3,006	2,987	3,070	3,080	0	0	80	94	99	2,952	3,006	3,067	3,164	3,179	8%
Graduate																
Masters & Ed. Spec.	7,907	8,150	7,975	7,629	7,610	2,156	2,053	2,330	2,240	2,365	10,063	10,203	10,305	9,869	9,975	-1%
Doctoral	3,766	3,845	4,011	3,876	3,980	124	183	251	366	442	3,890	4,028	4,262	4,242	4,422	14%
Nondegree	<u>642</u>	<u>594</u>	<u>611</u>	<u>623</u>	<u>554</u>	<u>485</u>	<u>407</u>	<u>384</u>	<u>396</u>	<u>273</u>	<u>1,127</u>	<u>1,001</u>	<u>995</u>	<u>1,019</u>	<u>827</u>	<u>-27%</u>
Total Graduate	12,315	12,589	12,597	12,128	12,144	2,765	2,643	2,965	3,002	3,080	15,080	15,232	15,562	15,130	15,224	1%
Grand Total Headcount																
	61,120	63,279	64,725	65,409	65,662	8,264	8,317	8,840	9,635	9,610	69,384	71,596	73,565	75,044	75,272	8%
FTE Enrollments by Student Level																
Undergraduate	40,133.0	41,824.1	42,909.4	43,873.0	44,067.6	1,835.7	1,913.2	2,030.7	2,234.1	2,265.8	41,968.7	43,737.3	44,940.1	46,107.1	46,333.4	10%
First Professional	2,917.3	2,964.1	2,945.4	3,028.6	3,034.1	0.0	0.0	80.0	94.0	99.0	2,917.3	2,964.1	3,025.4	3,122.6	3,133.1	7%
Graduate	<u>7,204.0</u>	<u>7,447.0</u>	<u>7,574.5</u>	<u>7,265.6</u>	<u>7,314.8</u>	<u>1,197.2</u>	<u>1,122.6</u>	<u>1,301.3</u>	<u>1,310.3</u>	<u>1,380.2</u>	<u>8,401.1</u>	<u>8,569.6</u>	<u>8,875.9</u>	<u>8,575.8</u>	<u>8,695.1</u>	<u>3%</u>
Total FTE	50,254.2	52,235.2	53,429.4	54,167.1	54,416.5	3,032.9	3,035.8	3,412.1	3,638.4	3,745.0	53,287.1	55,271.0	56,841.4	57,805.5	58,161.6	9%
SCH Produced by Student Level																
Undergraduate	601,995.0	627,361.5	643,641.0	658,095.1	661,014.5	27,536.0	28,699.0	30,461.1	33,512.6	33,986.5	629,531.0	656,060.5	674,102.1	691,607.7	695,001.0	10%
First Professional	50,808.0	54,567.5	52,211.4	53,238.1	53,123.0	0.0	0.0	1,488.9	1,740.6	1,835.5	50,808.0	54,567.5	53,700.3	54,978.7	54,958.5	8%
Graduate	<u>86,447.5</u>	<u>89,364.5</u>	<u>90,894.4</u>	<u>87,186.5</u>	<u>87,778.0</u>	<u>14,366.0</u>	<u>13,470.5</u>	<u>15,616.0</u>	<u>15,723.5</u>	<u>16,563.0</u>	<u>100,813.5</u>	<u>102,835.0</u>	<u>106,510.4</u>	<u>102,910.0</u>	<u>104,341.0</u>	<u>3%</u>
Total SCH	739,250.5	771,293.5	786,746.8	798,519.7	801,915.5	41,902.0	42,169.5	47,566.0	50,976.7	52,385.0	781,152.5	813,463.0	834,312.8	849,496.4	854,300.5	9%

Source: EMSAS Fall Enrollment file

Table 2.1 Headcounts, Full-time Equivalence, and Student Credit Hours by Location, Fall 2009 to Fall 2013

	<u>Columbia</u>										Total						5-yr. Change
	<u>On-Campus</u>					<u>Off-Campus</u>											
	FS09	FS10	FS11	FS12	FS13	FS09	FS10	FS11	FS12	FS13	FS09	FS10	FS11	FS12	FS13		
Headcount by Student Level																	
Undergraduate																	
Fresh & Soph DS	12,069	12,548	13,088	13,467	13,397	25	21	24	35	20	12,094	12,569	13,112	13,502	13,417	11%	
Junior & Senior DS	11,247	11,811	12,304	12,754	12,906	187	222	270	333	262	11,434	12,033	12,574	13,087	13,168	15%	
Nondegree	<u>200</u>	<u>166</u>	<u>233</u>	<u>289</u>	<u>230</u>	<u>71</u>	<u>66</u>	<u>73</u>	<u>82</u>	<u>113</u>	<u>271</u>	<u>232</u>	<u>306</u>	<u>371</u>	<u>343</u>	<u>27%</u>	
Total Undergraduate	23,516	24,525	25,625	26,510	26,533	283	309	367	450	395	23,799	24,834	25,992	26,960	26,928	13%	
First Professional																	
Law (JD)	444	443	431	416	396	0	0	0	0	0	444	443	431	416	396	-11%	
Medicine (MD)	385	388	392	402	395	0	0	0	0	1	385	388	392	402	396	3%	
Vet. Med. (DVM)	<u>321</u>	<u>366</u>	<u>413</u>	<u>452</u>	<u>460</u>	<u>0</u>	<u>0</u>	<u>0</u>	<u>1</u>	<u>2</u>	<u>321</u>	<u>366</u>	<u>413</u>	<u>453</u>	<u>462</u>	<u>44%</u>	
Total First Professional	1,150	1,197	1,236	1,270	1,251	0	0	0	1	3	1,150	1,197	1,236	1,271	1,254	9%	
Graduate																	
Masters & Ed. Spec.	2,243	2,287	2,408	2,423	2,344	1,238	1,190	1,126	1,058	1,167	3,481	3,477	3,534	3,481	3,511	1%	
Doctoral	2,172	2,178	2,288	2,189	2,181	85	147	227	340	408	2,257	2,325	2,515	2,529	2,589	15%	
Nondegree	<u>166</u>	<u>186</u>	<u>148</u>	<u>130</u>	<u>106</u>	<u>384</u>	<u>322</u>	<u>337</u>	<u>333</u>	<u>228</u>	<u>550</u>	<u>508</u>	<u>485</u>	<u>463</u>	<u>334</u>	<u>-39%</u>	
Total Graduate	4,581	4,651	4,844	4,742	4,631	1,707	1,659	1,690	1,731	1,803	6,288	6,310	6,534	6,473	6,434	2%	
Grand Total Headcount	29,247	30,373	31,705	32,522	32,415	1,990	1,968	2,057	2,182	2,201	31,237	32,341	33,762	34,704	34,616	11%	
FTE Enrollments by Student Level																	
Undergraduate	21,837.7	22,785.4	23,707.6	24,505.0	24,580.9	105.0	113.9	132.3	171.5	172.1	21,942.7	22,899.3	23,839.9	24,676.5	24,753.0	13%	
First Professional	1,134.3	1,174.6	1,214.9	1,246.7	1,225.0	0.0	0.0	0.0	1.0	3.0	1,134.3	1,174.6	1,214.9	1,247.7	1,228.0	8%	
Graduate	<u>2,996.1</u>	<u>3,071.5</u>	<u>3,257.0</u>	<u>3,224.3</u>	<u>3,126.5</u>	<u>724.3</u>	<u>693.0</u>	<u>708.6</u>	<u>696.4</u>	<u>767.3</u>	<u>3,720.4</u>	<u>3,764.5</u>	<u>3,965.6</u>	<u>3,920.7</u>	<u>3,893.8</u>	<u>5%</u>	
Total FTE	25,968.2	27,031.5	28,179.5	28,976.0	28,932.3	829.3	806.9	840.9	868.9	942.5	26,797.4	27,838.4	29,020.4	29,844.9	29,874.8	11%	
SCH Produced by Student Level																	
Undergraduate	327,565.5	341,780.5	355,613.5	367,575.0	368,713.0	1,575.0	1,709.0	1,985.0	2,573.0	2,582.0	329,140.5	343,489.5	357,598.5	370,148.0	371,295.0	13%	
First Professional	17,898.5	18,820.5	19,304.5	19,615.5	19,509.5	0.0	0.0	0.0	1.0	54.0	17,898.5	18,820.5	19,304.5	19,616.5	19,563.5	9%	
Graduate	<u>35,953.5</u>	<u>36,858.0</u>	<u>39,084.5</u>	<u>38,692.0</u>	<u>37,517.5</u>	<u>8,691.0</u>	<u>8,315.5</u>	<u>8,503.0</u>	<u>8,357.0</u>	<u>9,208.0</u>	<u>44,644.5</u>	<u>45,173.5</u>	<u>47,587.5</u>	<u>47,049.0</u>	<u>46,725.5</u>	<u>5%</u>	
Total SCH	381,417.5	397,459.0	414,002.5	425,882.5	425,740.0	10,266.0	10,024.5	10,488.0	10,931.0	11,844.0	391,683.5	407,483.5	424,490.5	436,813.5	437,584.0	12%	

Source: EMSAS Fall Enrollment file

Table 2.2 Headcounts, Full-time Equivalence, and Student Credit Hours by Location, Fall 2009 to Fall 2013

	<u>Kansas City</u>															5-yr. Change
	<u>On-Campus</u>					<u>Off-Campus</u>					<u>Total</u>					
	FS09	FS10	FS11	FS12	FS13	FS09	FS10	FS11	FS12	FS13	FS09	FS10	FS11	FS12	FS13	
Headcount by Student Level																
Undergraduate																
Fresh & Soph DS	3,126	3,241	3,346	3,493	3,216	0	0	0	0	2	3,126	3,241	3,346	3,493	3,218	3%
Junior & Senior DS	4,591	4,943	5,086	4,937	5,076	4	2	27	17	15	4,595	4,945	5,113	4,954	5,091	11%
Nondegree	<u>313</u>	<u>268</u>	<u>269</u>	<u>306</u>	<u>368</u>	<u>1,347</u>	<u>1,396</u>	<u>1,394</u>	<u>1,861</u>	<u>1,550</u>	<u>1,660</u>	<u>1,664</u>	<u>1,663</u>	<u>2,167</u>	<u>1,918</u>	16%
Total Undergraduate	8,030	8,452	8,701	8,736	8,660	1,351	1,398	1,421	1,878	1,567	9,381	9,850	10,122	10,614	10,227	9%
First Professional																
Dentistry (DDS)	401	405	420	425	425	0	0	0	0	0	401	405	420	425	425	6%
Law (JD)	499	489	470	463	477	0	0	0	0	0	499	489	470	463	477	-4%
Medicine (MD)	384	392	406	416	427	0	0	0	0	0	384	392	406	416	427	11%
Pharmacy (DPharm)	<u>339</u>	<u>352</u>	<u>283</u>	<u>328</u>	<u>328</u>	<u>0</u>	<u>0</u>	<u>80</u>	<u>93</u>	<u>96</u>	<u>339</u>	<u>352</u>	<u>363</u>	<u>421</u>	<u>424</u>	25%
Total First Professional	1,623	1,638	1,579	1,632	1,657	0	0	80	93	96	1,623	1,638	1,659	1,725	1,753	8%
Graduate																
Masters & Ed. Spec.	2,801	2,890	2,709	2,638	2,696	32	3	80	77	53	2,833	2,893	2,789	2,715	2,749	-3%
Doctoral	656	664	648	639	704	0	0	0	0	0	656	664	648	639	704	7%
Nondegree	<u>306</u>	<u>214</u>	<u>255</u>	<u>297</u>	<u>285</u>	<u>0</u>	<u>0</u>	<u>0</u>	<u>0</u>	<u>0</u>	<u>306</u>	<u>214</u>	<u>255</u>	<u>297</u>	<u>285</u>	-7%
Total Graduate	3,763	3,768	3,612	3,574	3,685	32	3	80	77	53	3,795	3,771	3,692	3,651	3,738	-2%
Grand Total Headcount	13,416	13,858	13,892	13,942	14,002	1,383	1,401	1,581	2,048	1,716	14,799	15,259	15,473	15,990	15,718	6%
FTE Enrollments by Student Level																
Undergraduate	6,647.9	7,047.1	7,214.4	7,233.9	7,189.6	324.5	347.5	371.3	480.8	400.0	6,972.4	7,394.6	7,585.7	7,714.7	7,589.6	9%
First Professional	1,603.9	1,618.5	1,558.5	1,613.9	1,637.1	0.0	0.0	80.0	93.0	96.0	1,603.9	1,618.5	1,638.5	1,706.9	1,733.1	8%
Graduate	<u>2,006.6</u>	<u>2,028.0</u>	<u>1,990.1</u>	<u>1,927.0</u>	<u>2,043.0</u>	<u>14.6</u>	<u>1.6</u>	<u>41.3</u>	<u>38.1</u>	<u>25.6</u>	<u>2,021.2</u>	<u>2,029.6</u>	<u>2,031.5</u>	<u>1,965.1</u>	<u>2,068.6</u>	2%
Total FTE	10,258.5	10,693.6	10,763.1	10,774.8	10,869.7	339.1	349.1	492.7	611.9	521.6	10,597.5	11,042.7	11,255.7	11,386.7	11,391.3	7%
SCH Produced by Student Level																
Undergraduate	99,719.0	105,707.0	108,216.0	108,509.1	107,843.5	4,867.0	5,213.0	5,570.1	7,212.6	6,000.5	104,586.0	110,920.0	113,786.1	115,721.7	113,844.0	9%
First Professional	29,238.5	32,192.0	29,432.9	30,173.6	30,116.5	0.0	0.0	1,488.9	1,739.6	1,781.5	29,238.5	32,192.0	30,921.8	31,913.2	31,898.0	9%
Graduate	<u>24,079.5</u>	<u>24,336.5</u>	<u>23,881.4</u>	<u>23,123.5</u>	<u>24,516.5</u>	<u>175.0</u>	<u>19.0</u>	<u>496.0</u>	<u>457.0</u>	<u>307.0</u>	<u>24,254.5</u>	<u>24,355.5</u>	<u>24,377.4</u>	<u>23,580.5</u>	<u>24,823.5</u>	2%
Total SCH	153,037.0	162,235.5	161,530.3	161,806.2	162,476.5	5,042.0	5,232.0	7,555.0	9,409.2	8,089.0	158,079.0	167,467.5	169,085.3	171,215.4	170,565.5	8%

Source: EMSAS Fall Enrollment file

Table 2.3 Headcounts, Full-time Equivalence, and Student Credit Hours by Location, Fall 2009 to Fall 2013

	<u>On-Campus</u>					<u>Off-Campus</u>					<u>Total</u>					5-yr. Change
	FS09	FS10	FS11	FS12	FS13	FS09	FS10	FS11	FS12	FS13	FS09	FS10	FS11	FS12	FS13	
Headcount by Student Level																
Undergraduate																
Fresh & Soph DS	2,291	2,347	2,298	2,325	2,398	13	42	29	25	13	2,304	2,389	2,327	2,350	2,411	5%
Junior & Senior DS	2,829	2,994	3,154	3,285	3,502	12	74	123	117	151	2,841	3,068	3,277	3,402	3,653	29%
Nondegree	<u>36</u>	<u>39</u>	<u>48</u>	<u>84</u>	<u>77</u>	<u>25</u>	<u>7</u>	<u>19</u>	<u>5</u>	<u>4</u>	<u>61</u>	<u>46</u>	<u>67</u>	<u>89</u>	<u>81</u>	<u>33%</u>
Total Undergraduate	5,156	5,380	5,500	5,694	5,977	50	123	171	147	168	5,206	5,503	5,671	5,841	6,145	18%
Graduate																
Masters & Ed. Spec.	593	686	651	567	640	575	530	659	690	774	1,168	1,216	1,310	1,257	1,414	21%
Doctoral	401	440	504	494	522	23	26	24	23	33	424	466	528	517	555	31%
Nondegree	<u>3</u>	<u>13</u>	<u>3</u>	<u>4</u>	<u>3</u>	<u>13</u>	<u>7</u>	<u>9</u>	<u>26</u>	<u>12</u>	<u>16</u>	<u>20</u>	<u>12</u>	<u>30</u>	<u>15</u>	<u>-6%</u>
Total Graduate	997	1,139	1,158	1,065	1,165	611	563	692	739	819	1,608	1,702	1,850	1,804	1,984	23%
Grand Total Headcount	6,153	6,519	6,658	6,759	7,142	661	686	863	886	987	6,814	7,205	7,521	7,645	8,129	19%
FTE Enrollments by Student Level																
Undergraduate	4,867.6	5,068.1	5,139.7	5,267.5	5,459.0	13.9	58.4	96.1	84.1	100.4	4,881.5	5,126.5	5,235.8	5,351.6	5,559.4	14%
Graduate	<u>703.0</u>	<u>796.9</u>	<u>809.0</u>	<u>727.1</u>	<u>819.9</u>	<u>275.9</u>	<u>238.8</u>	<u>331.6</u>	<u>374.2</u>	<u>414.3</u>	<u>978.9</u>	<u>1,035.7</u>	<u>1,140.6</u>	<u>1,101.3</u>	<u>1,234.2</u>	<u>26%</u>
Total FTE	5,570.6	5,865.0	5,948.7	5,994.5	6,278.9	289.9	297.2	427.7	458.3	514.7	5,860.4	6,162.2	6,376.5	6,452.9	6,793.5	16%
SCH Produced by Student Level																
Undergraduate	73,013.5	76,021.0	77,095.5	79,012.0	81,884.5	209.0	876.0	1,442.0	1,262.0	1,506.0	73,222.5	76,897.0	78,537.5	80,274.0	83,390.5	14%
Graduate	<u>8,436.0</u>	<u>9,562.5</u>	<u>9,708.5</u>	<u>8,725.0</u>	<u>9,839.0</u>	<u>3,311.0</u>	<u>2,866.0</u>	<u>3,979.0</u>	<u>4,490.5</u>	<u>4,971.0</u>	<u>11,747.0</u>	<u>12,428.5</u>	<u>13,687.5</u>	<u>13,215.5</u>	<u>14,810.0</u>	<u>26%</u>
Total SCH	81,449.5	85,583.5	86,804.0	87,737.0	91,723.5	3,520.0	3,742.0	5,421.0	5,752.5	6,477.0	84,969.5	89,325.5	92,225.0	93,489.5	98,200.5	16%

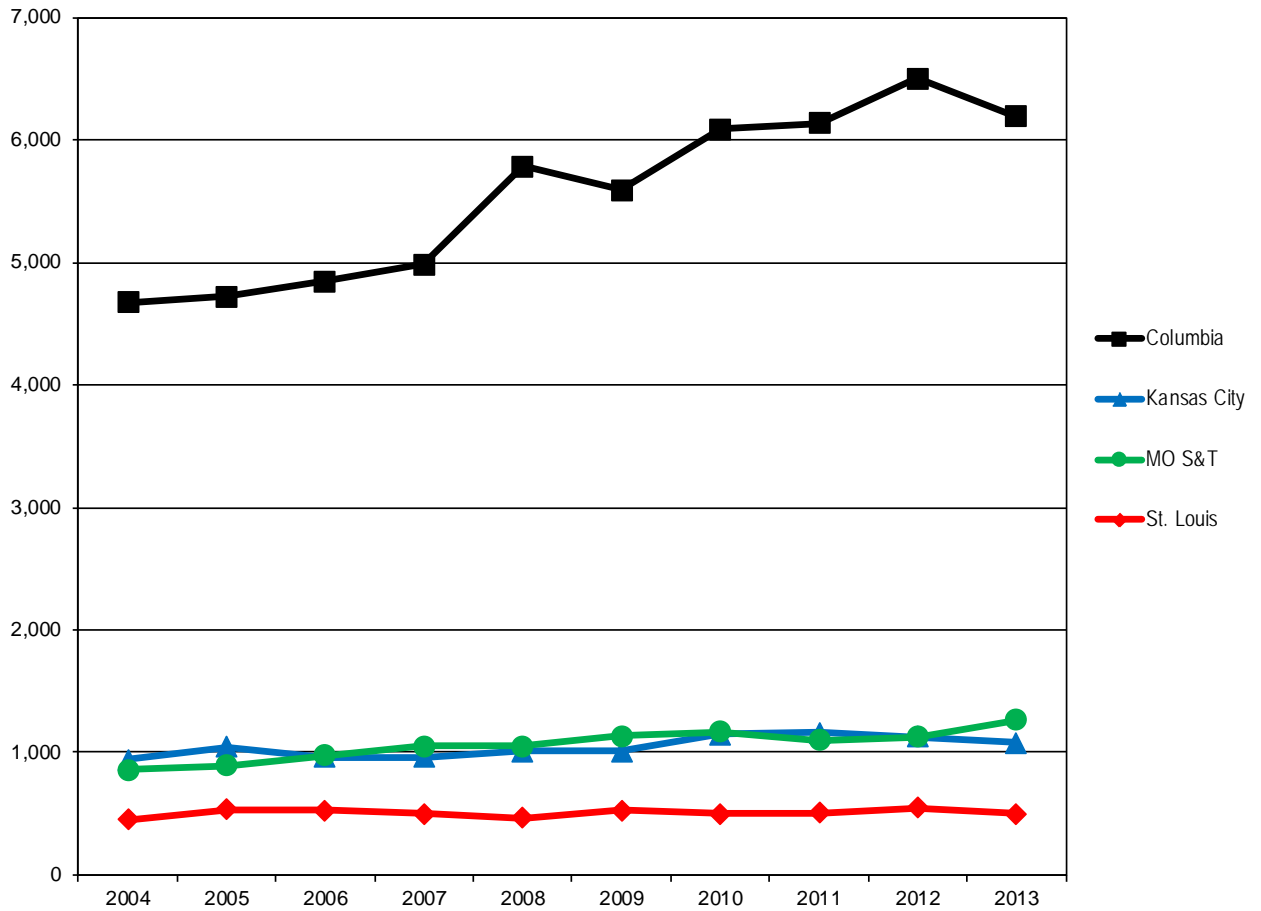
Source: EMSAS Fall Enrollment file

Table 2.4 Headcounts, Full-time Equivalence, and Student Credit Hours by Location, Fall 2009 to Fall 2013

	<u>On-Campus</u>					<u>St. Louis</u> <u>Off-Campus</u>					<u>Total</u>					5-yr. Change
	FS09	FS10	FS11	FS12	FS13	FS09	FS10	FS11	FS12	FS13	FS09	FS10	FS11	FS12	FS13	
	Headcount by Student Level															
Undergraduate																
Fresh & Soph DS	2,347	2,262	2,315	2,165	2,023	8	3	7	4	2	2,355	2,265	2,322	2,169	2,025	-14%
Junior & Senior DS	6,494	6,716	6,624	6,747	6,870	80	91	85	65	33	6,574	6,807	6,709	6,812	6,903	5%
Nondegree	<u>310</u>	<u>349</u>	<u>376</u>	<u>359</u>	<u>375</u>	<u>3,727</u>	<u>3,750</u>	<u>3,744</u>	<u>3,995</u>	<u>4,266</u>	<u>4,037</u>	<u>4,099</u>	<u>4,120</u>	<u>4,354</u>	<u>4,641</u>	15%
Total Undergraduate	9,151	9,327	9,315	9,271	9,268	3,815	3,844	3,836	4,064	4,301	12,966	13,171	13,151	13,335	13,569	5%
First Professional																
Optometry (OD)	<u>179</u>	<u>171</u>	<u>172</u>	<u>168</u>	<u>172</u>	<u>0</u>	<u>0</u>	<u>0</u>	<u>0</u>	<u>0</u>	<u>179</u>	<u>171</u>	<u>172</u>	<u>168</u>	<u>172</u>	-4%
Total First Professional	179	171	172	168	172	0	0	0	0	0	179	171	172	168	172	-4%
Graduate																
Masters & Ed. Spec.	2,270	2,287	2,207	2,001	1,930	311	330	465	415	371	2,581	2,617	2,672	2,416	2,301	-11%
Doctoral	537	563	571	554	573	16	10	0	3	1	553	573	571	557	574	4%
Nondegree	<u>167</u>	<u>181</u>	<u>205</u>	<u>192</u>	<u>160</u>	<u>88</u>	<u>78</u>	<u>38</u>	<u>37</u>	<u>33</u>	<u>255</u>	<u>259</u>	<u>243</u>	<u>229</u>	<u>193</u>	-24%
Total Graduate	2,974	3,031	2,983	2,747	2,663	415	418	503	455	405	3,389	3,449	3,486	3,202	3,068	-9%
Grand Total Headcount	12,304	12,529	12,470	12,186	12,103	4,230	4,262	4,339	4,519	4,706	16,534	16,791	16,809	16,705	16,809	2%
FTE Enrollments by Student Level																
Undergraduate	6,779.8	6,923.5	6,847.7	6,866.6	6,838.2	1,392.3	1,393.4	1,430.9	1,497.7	1,593.2	8,172.1	8,316.9	8,278.7	8,364.3	8,431.4	3%
First Professional	179.0	171.0	172.0	168.0	172.0	0.0	0.0	0.0	0.0	0.0	179.0	171.0	172.0	168.0	172.0	-4%
Graduate	<u>1,498.2</u>	<u>1,550.6</u>	<u>1,518.3</u>	<u>1,387.2</u>	<u>1,325.4</u>	<u>182.4</u>	<u>189.2</u>	<u>219.8</u>	<u>201.6</u>	<u>173.1</u>	<u>1,680.6</u>	<u>1,739.8</u>	<u>1,738.2</u>	<u>1,588.8</u>	<u>1,498.5</u>	-11%
Total FTE	8,457.0	8,645.1	8,538.1	8,421.8	8,335.7	1,574.7	1,582.6	1,650.8	1,699.3	1,766.3	10,031.8	10,227.7	10,188.8	10,121.0	10,101.9	1%
SCH Produced by Student Level																
Undergraduate	101,697.0	103,853.0	102,716.0	102,999.0	102,573.5	20,885.0	20,901.0	21,464.0	22,465.0	23,898.0	122,582.0	124,754.0	124,180.0	125,464.0	126,471.5	3%
First Professional	3,671.0	3,555.0	3,474.0	3,449.0	3,497.0	0.0	0.0	0.0	0.0	0.0	3,671.0	3,555.0	3,474.0	3,449.0	3,497.0	-5%
Graduate	<u>17,978.5</u>	<u>18,607.5</u>	<u>18,220.0</u>	<u>16,646.0</u>	<u>15,905.0</u>	<u>2,189.0</u>	<u>2,270.0</u>	<u>2,638.0</u>	<u>2,419.0</u>	<u>2,077.0</u>	<u>20,167.5</u>	<u>20,877.5</u>	<u>20,858.0</u>	<u>19,065.0</u>	<u>17,982.0</u>	-11%
Total SCH	123,346.5	126,015.5	124,410.0	123,094.0	121,975.5	23,074.0	23,171.0	24,102.0	24,884.0	25,975.0	146,420.5	149,186.5	148,512.0	147,978.0	147,950.5	1%

Source: EMSAS Fall Enrollment file

Figure 3a. On-Campus First-time College Freshmen History, 2004 to 2013

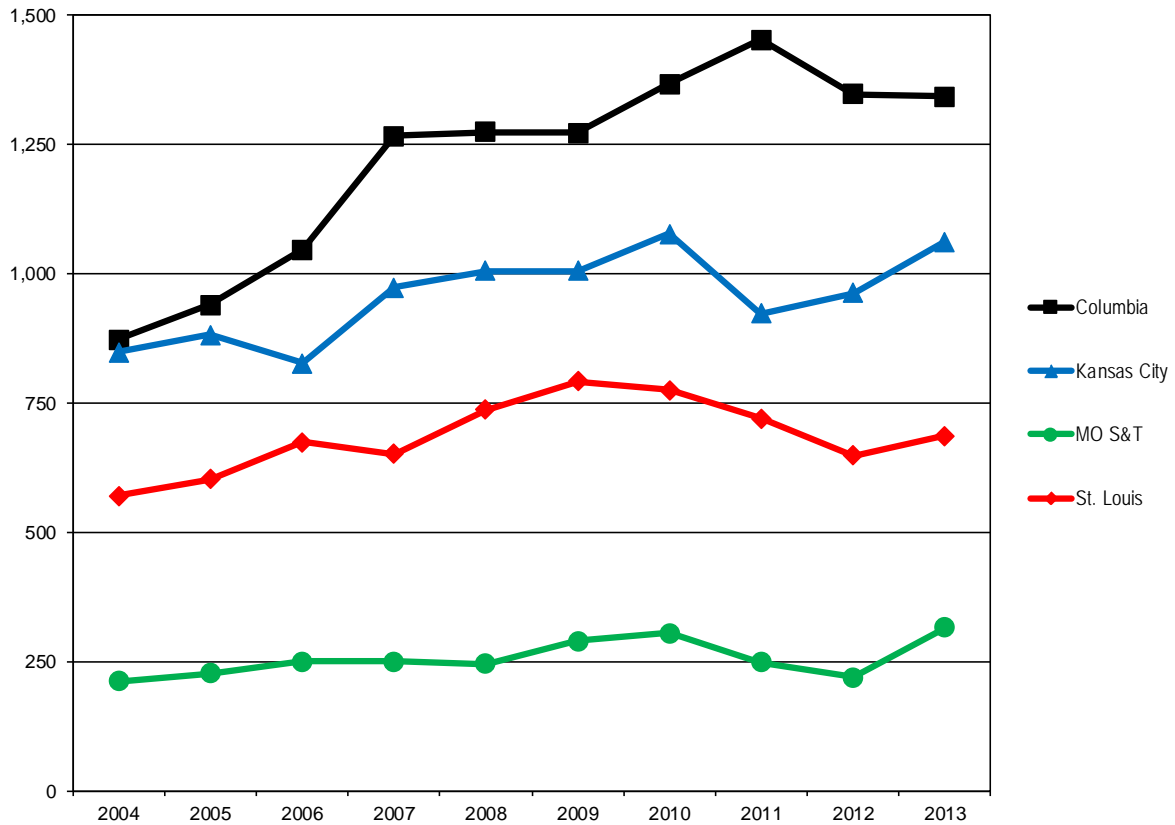


Source: EMSAS Fall Enrollment file
IR&P/LCB 10/10/13

On-Campus First-time College Freshmen History, 2004 to 2013

Campus	2004	2005	2006	2007	2008	2009	2010	2011	2012	2013
Columbia	4,673	4,720	4,842	4,981	5,780	5,589	6,087	6,137	6,498	6,187
Kansas City	939	1,048	959	959	1,008	1,007	1,147	1,161	1,125	1,078
MO S&T	856	892	977	1,050	1,055	1,132	1,170	1,101	1,125	1,263
St. Louis	451	536	530	502	468	527	502	508	547	500
Total	6,919	7,196	7,308	7,492	8,311	8,255	8,906	8,907	9,295	9,028

Figure 3b. On-Campus New Graduate Student History by Campus, 2004 to 2013

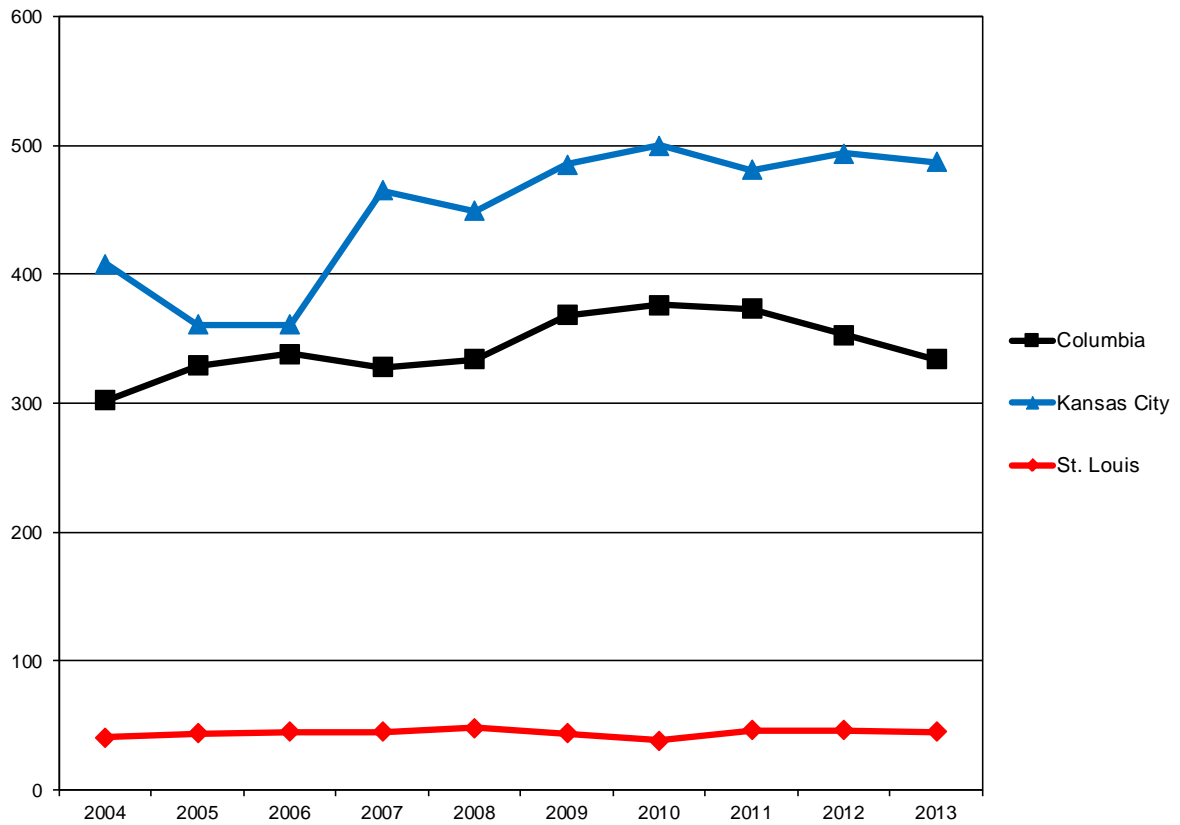


Source: EMSAS Fall Enrollment file
IR&P/LCB 10/10/13

On-Campus New Graduate Student History by Campus, 2004 to 2013

Campus	2004	2005	2006	2007	2008	2009	2010	2011	2012	2013
Columbia	873	939	1,046	1,266	1,274	1,272	1,367	1,452	1,346	1,342
Kansas City	848	882	826	973	1,005	1,005	1,076	922	963	1,061
MO S&T	212	228	251	250	245	290	305	248	219	316
St. Louis	570	603	674	652	736	792	775	720	648	686
Total	2,503	2,652	2,797	3,141	3,260	3,359	3,523	3,342	3,176	3,405

Figure 3c. On-Campus New First Professional Student History by Campus, 2004 to 2013



Source: EMSAS Fall Enrollment file
IR&PLCB 10/10/13

On-Campus New First Professional Student History By Campus, 2004 to 2013

Campus	2004	2005	2006	2007	2008	2009	2010	2011	2012	2013
Columbia	302	329	338	328	334	368	376	373	353	334
Kansas City	408	361	361	465	449	485	500	481	494	487
St. Louis	41	44	45	45	48	44	38	46	46	45
Total	751	734	744	838	831	897	914	900	893	866

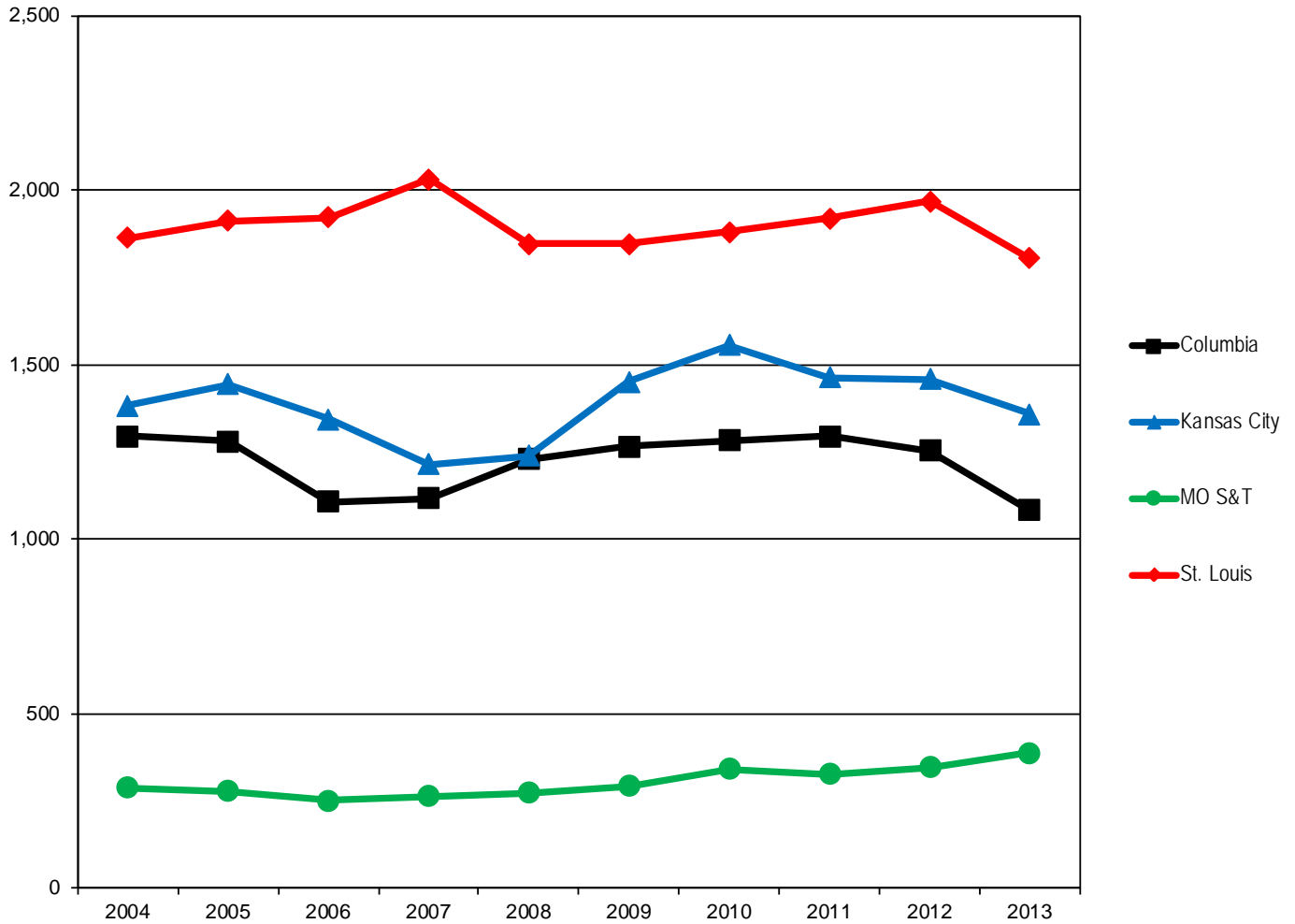
Table 3. On-Campus New Student Headcount, Fall 2009 - Fall 2013

		2009	2010	2011	2012	2013	5-yr. Change
Columbia							
Freshmen							
	Degree-Seeking	5,589	6,087	6,137	6,498	6,187	11%
	Non Degree-Seeking	0	0	0	0	0	
Undergraduate Transfers							
	Degree-Seeking	1,108	1,159	1,261	1,207	1,063	-4%
	Non Degree-Seeking	157	123	33	46	19	-88%
Professional							
	Degree-Seeking	368	376	373	353	334	-9%
Graduate							
	Degree-Seeking	1,169	1,248	1,353	1,257	1,269	9%
	Non Degree-Seeking	103	119	99	89	73	-29%
Kansas City							
Freshmen							
	Degree-Seeking	1,004	1,145	1,159	1,125	1,078	7%
	Non Degree-Seeking	3	2	2	0	0	
Undergraduate Transfers							
	Degree-Seeking	1,449	1,554	1,462	1,459	1,358	-6%
	Non Degree-Seeking	1	2	0	0	0	
Professional							
	Degree-Seeking	481	500	481	494	487	1%
	Non Degree-Seeking	4	0	0	0	0	-100%
Graduate							
	Degree-Seeking	1,004	1,076	922	963	1,061	6%
	Non Degree-Seeking	1	0	0	0	0	
Missouri S&T							
Freshmen							
	Degree-Seeking	1,108	1,149	1,096	1,124	1,262	14%
	Non Degree-Seeking	24	21	5	1	1	-96%
Undergraduate Transfers							
	Degree-Seeking	292	341	326	345	387	33%
	Non Degree-Seeking	1	1	0	0	1	0%
Graduate							
	Degree-Seeking	289	296	247	218	316	9%
	Non Degree-Seeking	1	9	1	1	0	
St Louis							
Freshmen							
	Degree-Seeking	525	497	504	546	482	-8%
	Non Degree-Seeking	2	5	4	1	18	800%
Undergraduate Transfers							
	Degree-Seeking	1,673	1,696	1,726	1,795	1,625	-3%
	Non Degree-Seeking	172	185	193	174	179	4%
Professional							
	Degree-Seeking	44	38	46	46	45	2%
Graduate							
	Degree-Seeking	750	721	670	600	652	-13%
	Non Degree-Seeking	42	54	50	48	34	-19%

Source: EMSAS Fall Enrollment file

IR&P/LCB 10/10/13

Figure 4. First-time On-Campus Undergraduate Transfer Student History by Campus, 2004 to 2013



Source: EMSAS Fall Enrollment file
IR&P/LCB 10/10/13

First-time On-Campus Undergraduate Transfer Student History by Campus, 2004 to 2013

Campus	2004	2005	2006	2007	2008	2009	2010	2011	2012	2013
Columbia	1,295	1,281	1,108	1,116	1,230	1,265	1,282	1,294	1,253	1,082
Kansas City	1,382	1,443	1,343	1,214	1,238	1,450	1,556	1,462	1,459	1,358
MO S&T	287	278	252	264	274	293	342	326	345	388
St. Louis	1,863	1,912	1,922	2,032	1,846	1,845	1,881	1,919	1,969	1,804
Total	4,827	4,914	4,625	4,626	4,588	4,853	5,061	5,001	5,026	4,632

Table 4.0a Resident Headcount History by Student Level, Load, and Campus, Fall 2009 to Fall 2013

Level	2009	2010	2011	2012	2013	5 yr. Change
UNIVERSITY OF MISSOURI SYSTEM FULL-TIME RESIDENT HEADCOUNT						
Undergraduate						
Freshman & Soph DS	14,514	14,609	14,856	14,641	13,845	-5%
Junior & Senior DS	17,441	18,223	18,419	18,715	19,092	9%
Nondegree	126	151	157	160	206	63%
Total System Full-time Resident Undergraduate	32,081	32,983	33,432	33,516	33,143	3%
First Professional						
Dentistry (DDS)	286	298	308	308	307	7%
Law (JD)	797	755	732	692	648	-19%
Medicine (MD)	649	633	644	656	633	-2%
Optometry (OD)	86	74	65	60	64	-26%
Pharmacy (Dpharm)	320	327	335	390	394	23%
Vet. Med (DVM)	264	301	344	386	384	45%
Total System Full-time Resident 1st Professional	2,402	2,388	2,428	2,492	2,430	1%
Graduate						
Masters & Ed. Spec.	2,311	2,377	2,308	2,106	1,998	-14%
Doctoral	544	996	1,013	1,032	979	80%
Nondegree	68	57	57	58	34	-50%
Total System Full-time Resident Graduate	2,923	3,430	3,378	3,196	3,011	3%
Total System Full-time Resident Headcount	37,406	38,801	39,238	39,204	38,584	3%
UNIVERSITY OF MISSOURI SYSTEM PART-TIME RESIDENT HEADCOUNT						
Undergraduate						
Freshman & Soph DS	1,059	992	1,050	963	913	-14%
Junior & Senior DS	4,266	4,518	4,701	4,786	4,686	10%
Nondegree	5,568	5,547	5,592	6,366	6,329	14%
Total System Part-time Resident Undergraduate	10,893	11,057	11,343	12,115	11,928	10%
First Professional						
Law (JD)	26	35	35	40	53	104%
Medicine (MD)	0	0	0	0	0	
Vet. Med (DVM)	0	0	0	0	0	
Total System Part-time Resident 1st Professional	26	35	35	40	53	104%
Graduate						
Masters & Ed. Spec.	4,164	4,222	4,106	3,751	3,641	-13%
Doctoral	1,254	835	892	854	964	-23%
Nondegree	825	689	701	666	531	-36%
Total System Part-time Resident Graduate	6,243	5,746	5,699	5,271	5,136	-18%
Total System Part-time Resident Headcount	17,162	16,838	17,077	17,426	17,117	0%
UNIVERSITY OF MISSOURI SYSTEM TOTAL RESIDENT HEADCOUNT						
Undergraduate						
Freshman & Soph DS	15,573	15,601	15,906	15,604	14,758	-5%
Junior & Senior DS	21,707	22,741	23,120	23,501	23,778	10%
Nondegree	5,694	5,698	5,749	6,526	6,535	15%
Total System Resident Undergraduate	42,974	44,040	44,775	45,631	45,071	5%
First Professional						
Dentistry (DDS)	286	298	308	308	307	7%
Law (JD)	823	790	767	732	701	-15%
Medicine (MD)	649	633	644	656	633	-2%
Optometry (OD)	86	74	65	60	64	-26%
Pharmacy (Dpharm)	320	327	335	390	394	23%
Vet. Med (DVM)	264	301	344	386	384	45%
Total System Resident 1st Professional	2,428	2,423	2,463	2,532	2,483	2%
Graduate						
Masters & Ed. Spec.	6,475	6,599	6,414	5,857	5,639	-13%
Doctoral	1,798	1,831	1,905	1,886	1,943	8%
Nondegree	893	746	758	724	565	-37%
Total System Resident Graduate	9,166	9,176	9,077	8,467	8,147	-11%
Grand Total System Resident Headcount	54,568	55,639	56,315	56,630	55,701	2%

Table 4.0b Non-Resident Headcount History by Student Level, Load, and Campus, Fall 2009 to Fall 2013
5 yr.

Level	2009	2010	2011	2012	2013	Change
UNIVERSITY OF MISSOURI SYSTEM FULL-TIME NON-RESIDENT HEADCOUNT						
Undergraduate						
Freshman & Soph DS	4,119	4,629	4,928	5,599	5,998	46%
Junior & Senior DS	3,128	3,469	3,819	3,996	4,167	33%
Nondegree	142	168	241	290	270	90%
Total System Full-time Non-Resident Undergraduate	7,389	8,266	8,988	9,885	10,435	41%
First Professional						
Dentistry (DDS)	115	107	112	117	118	3%
Law (JD)	112	136	127	136	159	42%
Medicine (MD)	120	147	154	162	190	58%
Optometry (OD)	93	97	107	108	108	16%
Pharmacy (Dpharm)	19	25	28	31	30	58%
Vet. Med (DVM)	57	65	69	67	78	37%
Total System Full-time Non-Resident 1st Professional	516	577	597	621	683	32%
Graduate						
Masters & Ed. Spec.	1,875	1,770	1,943	2,052	2,373	27%
Doctoral	1,208	1,597	1,695	1,683	1,775	47%
Nondegree	31	41	36	38	36	16%
Total System Full-time Non-Resident Graduate	3,114	3,408	3,674	3,773	4,184	34%
Total System Full-time Non-Resident Headcount	11,019	12,251	13,259	14,279	15,302	39%
UNIVERSITY OF MISSOURI SYSTEM PART-TIME NON-RESIDENT HEADCOUNT						
Undergraduate						
Freshman & Soph DS	187	234	273	311	315	68%
Junior & Senior DS	609	643	734	758	870	43%
Nondegree	193	175	166	165	178	-8%
Total System Part-time Non-Resident Undergraduate	989	1,052	1,173	1,234	1,363	38%
First Professional						
Law (JD)	8	6	7	11	13	63%
Medicine (MD)	0	0	0	0	0	-
Total System Part-time Non-Resident 1st Professional	8	6	7	11	13	63%
Graduate						
Masters & Ed. Spec.	1,713	1,834	1,948	1,960	1,963	15%
Doctoral	884	600	662	673	704	-20%
Nondegree	203	214	201	257	226	11%
Total System Part-time Non-Resident Graduate	2,800	2,648	2,811	2,890	2,893	3%
Total System Part-time Non-Resident Headcount	3,797	3,706	3,991	4,135	4,269	12%
UNIVERSITY OF MISSOURI SYSTEM TOTAL NON-RESIDENT HEADCOUNT						
Undergraduate						
Freshman & Soph DS	4,306	4,863	5,201	5,910	6,313	47%
Junior & Senior DS	3,737	4,112	4,553	4,754	5,037	35%
Nondegree	335	343	407	455	448	34%
Total System Non-Resident Undergraduate	8,378	9,318	10,161	11,119	11,798	41%
First Professional						
Dentistry (DDS)	115	107	112	117	118	3%
Law (JD)	120	142	134	147	172	43%
Medicine (MD)	120	147	154	162	190	58%
Optometry (OD)	93	97	107	108	108	16%
Pharmacy (Dpharm)	19	25	28	31	30	58%
Vet. Med (DVM)	57	65	69	67	78	37%
Total System Non-Resident 1st Professional	524	583	604	632	696	33%
Graduate						
Masters & Ed. Spec.	3,588	3,604	3,891	4,012	4,336	21%
Doctoral	2,092	2,197	2,357	2,356	2,479	18%
Nondegree	234	255	237	295	262	12%
Total System Non-Resident Graduate	5,914	6,056	6,485	6,663	7,077	20%
Grand Total System Non-Resident Headcount	14,816	15,957	17,250	18,414	19,571	32%

Table 4.1a Resident Headcount History by Student Level, Load, and Campus, Fall 2009 to Fall 2013

Level	2009	2010	2011	2012	2013	5 yr. Change
UNIVERSITY OF MISSOURI-COLUMBIA FULL-TIME RESIDENT HEADCOUNT						
Undergraduate						
Freshman & Soph DS	9,099	9,137	9,315	9,191	8,640	-5%
Junior & Senior DS	9,294	9,675	9,922	10,046	10,152	9%
Nondegree	2	1	2	3	2	0%
Total MU Full-time Resident Undergraduate	18,395	18,813	19,239	19,240	18,794	2%
First Professional						
Law (JD)	409	398	402	367	339	-17%
Medicine (MD)	375	372	377	384	364	-3%
Vet. Med (DVM)	264	301	344	386	384	45%
Total MU Full-time Resident 1st Professional	1,048	1,071	1,123	1,137	1,087	4%
Graduate						
Masters & Ed. Spec.	1,191	1,157	1,133	1,112	1,072	-10%
Doctoral	376	761	750	791	712	89%
Nondegree	29	26	23	26	11	-62%
Total MU Full-time Resident Graduate	1,596	1,944	1,906	1,929	1,795	12%
Total MU Full-time Resident Headcount	21,039	21,828	22,268	22,306	21,676	3%
UNIVERSITY OF MISSOURI-COLUMBIA PART-TIME RESIDENT HEADCOUNT						
Undergraduate						
Freshman & Soph DS	257	229	266	245	231	-10%
Junior & Senior DS	797	843	885	988	882	11%
Nondegree	186	139	153	199	207	11%
Total MU Part-time Resident Undergraduate	1,240	1,211	1,304	1,432	1,320	6%
First Professional						
Law (JD)	4	14	11	20	28	600%
Medicine (MD)	0	0	0	0	0	
Vet. Med (DVM)	0	0	0	0	0	
Total MU Part-time Resident 1st Professional	4	14	11	20	28	600%
Graduate						
Masters & Ed. Spec.	1,059	1,100	1,116	1,043	999	-6%
Doctoral	679	318	416	368	453	-33%
Nondegree	381	357	345	337	225	-41%
Total MU Part-time Resident Graduate	2,119	1,775	1,877	1,748	1,677	-21%
Total MU Part-time Resident Headcount	3,363	3,000	3,192	3,200	3,025	-10%
UNIVERSITY OF MISSOURI-COLUMBIA TOTAL RESIDENT HEADCOUNT						
Undergraduate						
Freshman & Soph DS	9,356	9,366	9,581	9,436	8,871	-5%
Junior & Senior DS	10,091	10,518	10,807	11,034	11,034	9%
Nondegree	188	140	155	202	209	11%
Total MU Resident Undergraduate	19,635	20,024	20,543	20,672	20,114	2%
First Professional						
Law (JD)	413	412	413	387	367	-11%
Medicine (MD)	375	372	377	384	364	-3%
Vet. Med (DVM)	264	301	344	386	384	45%
Total MU Resident 1st Professional	1,052	1,085	1,134	1,157	1,115	6%
Graduate						
Masters & Ed. Spec.	2,250	2,257	2,249	2,155	2,071	-8%
Doctoral	1,055	1,079	1,166	1,159	1,165	10%
Nondegree	410	383	368	363	236	-42%
Total MU Resident Graduate	3,715	3,719	3,783	3,677	3,472	-7%
Grand Total MU Resident Headcount	24,402	24,828	25,460	25,506	24,701	1%

Table 4.1b Non-Resident Headcount History by Student Level, Load, and Campus, Fall 2009 to Fall 2013

Level	2009	2010	2011	2012	2013	5 yr. Change
UNIVERSITY OF MISSOURI-COLUMBIA FULL-TIME NON-RESIDENT HEADCOUNT						
Undergraduate						
Freshman & Soph DS	2,658	3,137	3,417	3,923	4,380	65%
Junior & Senior DS	1,274	1,420	1,644	1,886	1,996	57%
Nondegree	44	53	113	129	88	100%
Total MU Full-time Non-Resident Undergraduate	3,976	4,610	5,174	5,938	6,464	63%
First Professional						
Law (JD)	31	30	18	27	26	-16%
Medicine (MD)	10	16	15	18	32	220%
Vet. Med (DVM)	57	65	69	67	78	37%
Total MU Full-time Non-Resident 1st Professional	98	111	102	112	136	39%
Graduate						
Masters & Ed. Spec.	714	674	797	849	903	26%
Doctoral	709	999	1,067	1,073	1,114	57%
Nondegree	17	20	24	26	25	47%
Total MU Full-time Non-Resident Graduate	1,440	1,693	1,888	1,948	2,042	42%
Total MU Full-time Non-Resident Headcount	5,514	6,414	7,164	7,998	8,642	57%
UNIVERSITY OF MISSOURI-COLUMBIA PART-TIME NON-RESIDENT HEADCOUNT						
Undergraduate						
Freshman & Soph DS	80	66	114	143	166	108%
Junior & Senior DS	69	95	123	167	138	100%
Nondegree	39	39	38	40	46	18%
Total MU Part-time Non-Resident Undergraduate	188	200	275	350	350	86%
First Professional						
Law (JD)	0	1	0	2	3	
Medicine (MD)	0	0	0	0	0	
Vet. Med (DVM)	0	0	0	0	0	
Total MU Part-time Non-Resident 1st Professional	0	1	0	2	3	
Graduate						
Masters & Ed. Spec.	517	546	488	477	537	4%
Doctoral	493	247	282	297	310	-37%
Nondegree	123	105	93	74	73	-41%
Total MU Part-time Non-Resident Graduate	1,133	898	863	848	920	-19%
Total MU Part-time Non-Resident Headcount	1,321	1,099	1,138	1,200	1,273	-4%
UNIVERSITY OF MISSOURI-COLUMBIA TOTAL NON-RESIDENT HEADCOUNT						
Undergraduate						
Freshman & Soph DS	2,738	3,203	3,531	4,066	4,546	66%
Junior & Senior DS	1,343	1,515	1,767	2,053	2,134	59%
Nondegree	83	92	151	169	134	61%
Total MU Non-Resident Undergraduate	4,164	4,810	5,449	6,288	6,814	64%
First Professional						
Law (JD)	31	31	18	29	29	-6%
Medicine (MD)	10	16	15	18	32	220%
Vet. Med (DVM)	57	65	69	67	78	37%
Total MU Non-Resident 1st Professional	98	112	102	114	139	42%
Graduate						
Masters & Ed. Spec.	1,231	1,220	1,285	1,326	1,440	17%
Doctoral	1,202	1,246	1,349	1,370	1,424	18%
Nondegree	140	125	117	100	98	-30%
Total MU Non-Resident Graduate	2,573	2,591	2,751	2,796	2,962	15%
Grand Total MU Non-Resident Headcount	6,835	7,513	8,302	9,198	9,915	45%

Table 4.2a Resident Headcount History by Student Level, Load, and Campus, Fall 2009 to Fall 2013

Level	2009	2010	2011	2012	2013	5 yr. Change
UNIVERSITY OF MISSOURI-KANSAS CITY FULL-TIME RESIDENT HEADCOUNT						
Undergraduate						
Freshman & Soph DS	2,067	2,125	2,183	2,241	2,041	-1%
Junior & Senior DS	2,421	2,668	2,631	2,563	2,668	10%
Nondegree	6	11	7	8	10	67%
Total UMKC Full-time Resident Undergraduate	4,494	4,804	4,821	4,812	4,719	5%
First Professional						
Dentistry (DDS)	286	298	308	308	307	7%
Law (JD)	388	357	330	325	309	-20%
Medicine (MD)	274	261	267	272	269	-2%
Pharmacy (Dpharm)	320	327	335	390	394	23%
Total UMKC Full-time Resident 1st Professional	1,268	1,243	1,240	1,295	1,279	1%
Graduate						
Masters & Ed. Spec.	492	534	522	452	456	-7%
Doctoral	34	51	53	50	64	88%
Nondegree	18	1	0	4	4	-78%
Total UMKC Full-time Resident Graduate	544	586	575	506	524	-4%
Total UMKC Full-time Resident Headcount	6,306	6,633	6,636	6,613	6,522	3%
UNIVERSITY OF MISSOURI-KANSAS CITY PART-TIME RESIDENT HEADCOUNT						
Undergraduate						
Freshman & Soph DS	270	269	305	303	268	-1%
Junior & Senior DS	817	808	895	882	826	1%
Nondegree	1,499	1,483	1,495	1,974	1,699	13%
Total UMKC Part-time Resident Undergraduate	2,586	2,560	2,695	3,159	2,793	8%
First Professional						
Law (JD)	22	21	24	20	25	14%
Medicine (MD)	0	0	0	0	0	
Total UMKC Part-time Resident 1st Professional	22	21	24	20	25	14%
Graduate						
Masters & Ed. Spec.	1,110	1,124	1,058	1,000	925	-17%
Doctoral	216	192	164	172	189	-13%
Nondegree	221	152	187	159	147	-33%
Total UMKC Part-time Resident Graduate	1,547	1,468	1,409	1,331	1,261	-18%
Total UMKC Part-time Resident Headcount	4,155	4,049	4,128	4,510	4,079	-2%
UNIVERSITY OF MISSOURI-KANSAS CITY TOTAL RESIDENT HEADCOUNT						
Undergraduate						
Freshman & Soph DS	2,337	2,394	2,488	2,544	2,309	-1%
Junior & Senior DS	3,238	3,476	3,526	3,445	3,494	8%
Nondegree	1,505	1,494	1,502	1,982	1,709	14%
Total UMKC Resident Undergraduate	7,080	7,364	7,516	7,971	7,512	6%
First Professional						
Dentistry (DDS)	286	298	308	308	307	7%
Law (JD)	410	378	354	345	334	-19%
Medicine (MD)	274	261	267	272	269	-2%
Pharmacy (Dpharm)	320	327	335	390	394	23%
Total UMKC Resident 1st Professional	1,290	1,264	1,264	1,315	1,304	1%
Graduate						
Masters & Ed. Spec.	1,602	1,658	1,580	1,452	1,381	-14%
Doctoral	250	243	217	222	253	1%
Nondegree	239	153	187	163	151	-37%
Total UMKC Resident Graduate	2,091	2,054	1,984	1,837	1,785	-15%
Grand Total UMKC Resident Headcount	10,461	10,682	10,764	11,123	10,601	1%

Table 4.2b Non-Resident Headcount History by Student Level, Load, and Campus, Fall 2009 to Fall 2013

Level	2009	2010	2011	2012	2013	5 yr. Change
UNIVERSITY OF MISSOURI-KANSAS CITY FULL-TIME NON-RESIDENT HEADCOUNT						
Undergraduate						
Freshman & Soph DS	712	753	747	835	817	15%
Junior & Senior DS	1,012	1,117	1,202	1,153	1,173	16%
Nondegree	46	70	80	94	104	126%
Total UMKC Full-time Non-Resident Undergraduate	1,770	1,940	2,029	2,082	2,094	18%
First Professional						
Dentistry (DDS)	115	107	112	117	118	3%
Law (JD)	81	106	109	109	133	64%
Medicine (MD)	110	131	139	144	158	44%
Pharmacy (Dpharm)	19	25	28	31	30	58%
Total UMKC Full-time Non-Resident 1st Professional	325	369	388	401	439	35%
Graduate						
Masters & Ed. Spec.	556	520	556	576	707	27%
Doctoral	150	132	130	131	149	-1%
Nondegree	6	2	6	6	6	0%
Total UMKC Full-time Non-Resident Graduate	712	654	692	713	862	21%
Total UMKC Full-time Non-Resident Headcount	2,807	2,963	3,109	3,196	3,395	21%
UNIVERSITY OF MISSOURI-KANSAS CITY PART-TIME NON-RESIDENT HEADCOUNT						
Undergraduate						
Freshman & Soph DS	77	94	111	114	92	19%
Junior & Senior DS	345	352	385	356	424	23%
Nondegree	109	100	81	91	105	-4%
Total UMKC Part-time Non-Resident Undergraduate	531	546	577	561	621	17%
First Professional						
Law (JD)	8	5	7	9	10	25%
Medicine (MD)	0	0	0	0	0	
Total UMKC Part-time Non-Resident 1st Professional	8	5	7	9	10	25%
Graduate						
Masters & Ed. Spec.	675	715	653	687	661	-2%
Doctoral	256	289	301	286	302	18%
Nondegree	61	59	62	128	128	110%
Total UMKC Part-time Non-Resident Graduate	992	1,063	1,016	1,101	1,091	10%
Total UMKC Part-time Non-Resident Headcount	1,531	1,614	1,600	1,671	1,722	12%
UNIVERSITY OF MISSOURI-KANSAS CITY TOTAL NON-RESIDENT HEADCOUNT						
Undergraduate						
Freshman & Soph DS	789	847	858	949	909	15%
Junior & Senior DS	1,357	1,469	1,587	1,509	1,597	18%
Nondegree	155	170	161	185	209	35%
Total UMKC Non-Resident Undergraduate	2,301	2,486	2,606	2,643	2,715	18%
First Professional						
Dentistry (DDS)	115	107	112	117	118	3%
Law (JD)	89	111	116	118	143	61%
Medicine (MD)	110	131	139	144	158	44%
Pharmacy (Dpharm)	19	25	28	31	30	58%
Total UMKC Non-Resident 1st Professional	333	374	395	410	449	35%
Graduate						
Masters & Ed. Spec.	1,231	1,235	1,209	1,263	1,368	11%
Doctoral	406	421	431	417	451	11%
Nondegree	67	61	68	134	134	100%
Total UMKC Non-Resident Graduate	1,704	1,717	1,708	1,814	1,953	15%
Grand Total UMKC Non-Resident Headcount	4,338	4,577	4,709	4,867	5,117	18%

Table 4.3a Resident Headcount History by Student Level, Load, and Campus, Fall 2009 to Fall 2013

Level	2009	2010	2011	2012	2013	5 yr. Change
MISSOURI S&T FULL-TIME RESIDENT HEADCOUNT						
Undergraduate						
Freshman & Soph DS	1,760	1,811	1,780	1,752	1,817	3%
Junior & Senior DS	2,114	2,178	2,313	2,401	2,553	21%
Nondegree	1	0	1	1	3	200%
Total MO S&T Full-time Resident Undergraduate	3,875	3,989	4,094	4,154	4,373	13%
Graduate						
Masters & Ed. Spec.	158	207	199	153	129	-18%
Doctoral	75	64	79	66	75	0%
Nondegree	0	0	0	0	0	
Total MO S&T Full-time Resident Graduate	233	271	278	219	204	-12%
Total Missouri S&T Full-time Resident Headcount	4,108	4,260	4,372	4,373	4,577	11%
MISSOURI S&T PART-TIME RESIDENT HEADCOUNT						
Undergraduate						
Freshman & Soph DS	70	65	68	68	64	-9%
Junior & Senior DS	230	299	295	356	392	70%
Nondegree	38	34	47	51	40	5%
Total MO S&T Part-time Resident Undergraduate	338	398	410	475	496	47%
Graduate						
Masters & Ed. Spec.	222	232	256	238	243	9%
Doctoral	38	47	43	40	37	-3%
Nondegree	12	8	5	6	5	-58%
Total MO S&T Part-time Resident Graduate	272	287	304	284	285	5%
Total Missouri S&T Part-time Resident Headcount	610	685	714	759	781	28%
MISSOURI S&T TOTAL RESIDENT HEADCOUNT						
Undergraduate						
Freshman & Soph DS	1,830	1,876	1,848	1,820	1,881	3%
Junior & Senior DS	2,344	2,477	2,608	2,757	2,945	26%
Nondegree	39	34	48	52	43	10%
Total MO S&T Resident Undergraduate	4,213	4,387	4,504	4,629	4,869	16%
Graduate						
Masters & Ed. Spec.	380	439	455	391	372	-2%
Doctoral	113	111	122	106	112	-1%
Nondegree	12	8	5	6	5	-58%
Total MO S&T Resident Graduate	505	558	582	503	489	-3%
Grand Total Missouri S&T Resident Headcount	4,718	4,945	5,086	5,132	5,358	14%

Table 4.3b Non-Resident Headcount History by Student Level, Load, and Campus, Fall 2009 to Fall 2013

Level	2009	2010	2011	2012	2013	5 yr. Change
MISSOURI S&T FULL-TIME NON-RESIDENT HEADCOUNT						
Undergraduate						
Freshman & Soph DS	463	465	458	506	493	6%
Junior & Senior DS	459	536	582	569	571	24%
Nondegree	10	5	9	31	35	250%
Total MO S&T Full-time Non-Resident Undergraduate	932	1,006	1,049	1,106	1,099	18%
Graduate						
Masters & Ed. Spec.	438	411	447	457	597	36%
Doctoral	281	320	361	362	390	39%
Nondegree	0	7	0	1	0	
Total MO S&T Full-time Non-Resident Graduate	719	738	808	820	987	37%
Total Missouri S&T Full-time Non-Resident Headcount	1,651	1,744	1,857	1,926	2,086	26%
MISSOURI S&T PART-TIME NON-RESIDENT HEADCOUNT						
Undergraduate						
Freshman & Soph DS	11	48	21	24	37	236%
Junior & Senior DS	38	55	87	76	137	261%
Nondegree	12	7	10	6	3	-75%
Total MO S&T Part-time Non-Resident Undergraduate	61	110	118	106	177	190%
Graduate						
Masters & Ed. Spec.	350	366	408	409	445	27%
Doctoral	30	35	45	49	53	77%
Nondegree	4	5	7	23	10	150%
Total MO S&T Part-time Non-Resident Graduate	384	406	460	481	508	32%
Total Missouri S&T Part-time Non-Resident Headcount	445	516	578	587	685	54%
MISSOURI S&T TOTAL NON-RESIDENT HEADCOUNT						
Undergraduate						
Freshman & Soph DS	474	513	479	530	530	12%
Junior & Senior DS	497	591	669	645	708	42%
Nondegree	22	12	19	37	38	73%
Total MO S&T Non-Resident Undergraduate	993	1,116	1,167	1,212	1,276	28%
Graduate						
Masters & Ed. Spec.	788	777	855	866	1,042	32%
Doctoral	311	355	406	411	443	42%
Nondegree	4	12	7	24	10	150%
Total MO S&T Non-Resident Graduate	1,103	1,144	1,268	1,301	1,495	36%
Grand Total Missouri S&T Non-Resident Headcount	2,096	2,260	2,435	2,513	2,771	32%

Table 4.4a Resident Headcount History by Student Level, Load, and Campus, Fall 2009 to Fall 2013

Level	2009	2010	2011	2012	2013	5 yr. Change
UNIVERSITY OF MISSOURI-ST. LOUIS FULL-TIME RESIDENT HEADCOUNT						
Undergraduate						
Freshman & Soph DS	1,588	1,536	1,578	1,457	1,347	-15%
Junior & Senior DS	3,612	3,702	3,553	3,705	3,719	3%
Nondegree	117	139	147	148	191	63%
Total UMSL Full-time Resident Undergraduate	5,317	5,377	5,278	5,310	5,257	-1%
First Professional						
Optometry (OD)	86	74	65	60	64	-26%
Total UMSL Full-time Resident 1st Professional	86	74	65	60	64	-26%
Graduate						
Masters & Ed. Spec.	470	479	454	389	341	-27%
Doctoral	59	120	131	125	128	117%
Nondegree	21	30	34	28	19	-10%
Total UMSL Full-time Resident Graduate	550	629	619	542	488	-11%
Total UMSL Full-time Resident Headcount	5,953	6,080	5,962	5,912	5,809	-2%
UNIVERSITY OF MISSOURI-ST. LOUIS PART-TIME RESIDENT HEADCOUNT						
Undergraduate						
Freshman & Soph DS	462	429	411	347	350	-24%
Junior & Senior DS	2,422	2,568	2,626	2,560	2,586	7%
Nondegree	3,845	3,891	3,897	4,142	4,383	14%
Total UMSL Part-time Resident Undergraduate	6,729	6,888	6,934	7,049	7,319	9%
First Professional						
Optometry (OD)	0	0	0	0	0	-
Total UMSL Part-time Resident 1st Professional	0	0	0	0	0	-
Graduate						
Masters & Ed. Spec.	1,773	1,766	1,676	1,470	1,474	-17%
Doctoral	321	278	269	274	285	-11%
Nondegree	211	172	164	164	154	-27%
Total UMSL Part-time Resident Graduate	2,305	2,216	2,109	1,908	1,913	-17%
Total UMSL Part-time Resident Headcount	9,034	9,104	9,043	8,957	9,232	2%
UNIVERSITY OF MISSOURI-ST. LOUIS TOTAL RESIDENT HEADCOUNT						
Undergraduate						
Freshman & Soph DS	2,050	1,965	1,989	1,804	1,697	-17%
Junior & Senior DS	6,034	6,270	6,179	6,265	6,305	4%
Nondegree	3,962	4,030	4,044	4,290	4,574	15%
Total UMSL Resident Undergraduate	12,046	12,265	12,212	12,359	12,576	4%
First Professional						
Optometry (OD)	86	74	65	60	64	-26%
Total UMSL Resident 1st Professional	86	74	65	60	64	-26%
Graduate						
Masters & Ed. Spec.	2,243	2,245	2,130	1,859	1,815	-19%
Doctoral	380	398	400	399	413	9%
Nondegree	232	202	198	192	173	-25%
Total UMSL Resident Graduate	2,855	2,845	2,728	2,450	2,401	-16%
Grand Total UMSL Resident Headcount	14,987	15,184	15,005	14,869	15,041	0%

Table 4.4b Non-Resident Headcount History by Student Level, Load, and Campus, Fall 2009 to Fall 2013

Level	2009	2010	2011	2012	2013	5 yr. Change
UNIVERSITY OF MISSOURI-ST. LOUIS FULL-TIME NON-RESIDENT HEADCOUNT						
Undergraduate						
Freshman & Soph DS	286	274	306	335	308	8%
Junior & Senior DS	383	396	391	388	427	11%
Nondegree	42	40	39	36	43	2%
Total UMSL Full-time Non-Resident Undergraduate	711	710	736	759	778	9%
First Professional						
Optometry (OD)	93	97	107	108	108	16%
Total UMSL Full-time Non-Resident 1st Professional	93	97	107	108	108	16%
Graduate						
Masters & Ed. Spec.	167	165	143	170	166	-1%
Doctoral	68	146	137	117	122	79%
Nondegree	8	12	6	5	5	-38%
Total UMSL Full-time Non-Resident Graduate	243	323	286	292	293	21%
Total UMSL Full-time Non-Resident Headcount	1,047	1,130	1,129	1,159	1,179	13%
UNIVERSITY OF MISSOURI-ST. LOUIS PART-TIME NON-RESIDENT HEADCOUNT						
Undergraduate						
Freshman & Soph DS	19	26	27	30	20	5%
Junior & Senior DS	157	141	139	159	171	9%
Nondegree	33	29	37	28	24	-27%
Total UMSL Part-time Non-Resident Undergraduate	209	196	203	217	215	3%
First Professional						
Optometry (OD)	0	0	0	0	0	-
Total UMSL Part-time Non-Resident 1st Professional	0	0	0	0	0	-
Graduate						
Masters & Ed. Spec.	171	207	399	387	320	87%
Doctoral	105	29	34	41	39	-63%
Nondegree	15	45	39	32	15	0%
Total UMSL Part-time Non-Resident Graduate	291	281	472	460	374	29%
Total UMSL Part-time Non-Resident Headcount	500	477	675	677	589	18%
UNIVERSITY OF MISSOURI-ST. LOUIS TOTAL NON-RESIDENT HEADCOUNT						
Undergraduate						
Freshman & Soph DS	305	300	333	365	328	8%
Junior & Senior DS	540	537	530	547	598	11%
Nondegree	75	69	76	64	67	-11%
Total UMSL Non-Resident Undergraduate	920	906	939	976	993	8%
First Professional						
Optometry (OD)	93	97	107	108	108	16%
Total UMSL Non-Resident 1st Professional	93	97	107	108	108	16%
Graduate						
Masters & Ed. Spec.	338	372	542	557	486	44%
Doctoral	173	175	171	158	161	-7%
Nondegree	23	57	45	37	20	-13%
Total UMSL Non-Resident Graduate	534	604	758	752	667	25%
Grand Total UMSL Non-Resident Headcount	1,547	1,607	1,804	1,836	1,768	14%

Table 5. Headcount Students by Gender and Ethnicity, Fall 2013

Data - Classification	<u>MU</u>		<u>UMKC</u>		<u>MO S&T</u>		<u>UMSL</u>		<u>TOTAL</u>	
	HC	%	HC	%	HC	%	HC	%	HC	%
A. Gender										
Men										
First-time DS Freshmen	2,909	47%	450	42%	972	77%	187	39%	4,518	50%
Other Undergraduate	10,055	48%	3,875	42%	3,741	77%	5,515	42%	23,186	48%
First Professional	554	44%	906	52%	0	-	59	34%	1,519	48%
Graduate	<u>2,803</u>	44%	<u>1,608</u>	43%	<u>1,577</u>	79%	<u>1,045</u>	34%	<u>7,033</u>	46%
Total	16,321	47%	6,839	44%	6,290	77%	6,806	40%	36,256	48%
Women										
First-time DS Freshmen	3,285	53%	628	58%	290	23%	295	61%	4,498	50%
Other Undergraduate	10,679	52%	5,274	58%	1,142	23%	7,572	58%	24,667	52%
First Professional	700	56%	846	48%	0	-	113	66%	1,659	52%
Graduate	<u>3,631</u>	56%	<u>2,131</u>	57%	<u>407</u>	21%	<u>2,023</u>	66%	<u>8,192</u>	54%
Total	18,295	53%	8,879	56%	1,839	23%	10,003	60%	39,016	52%
Grand Total	34,616		15,718		8,129		16,809		75,272	

Table 5. Headcount Students by Gender and Ethnicity (continued)

Data - Classification	MU		UMKC		MO S&T		UMSL		TOTAL	
	HC	%	HC	%	HC	%	HC	%	HC	%
B. Ethnicity *										
Am Indian/Alaskan Native										
First-time DS Freshmen	14	0%	4	0%	0	0%	7	2%	25	0%
Other Undergraduate	52	0%	27	0%	24	1%	40	0%	143	0%
First Professional	12	1%	9	1%	0	-	1	1%	22	1%
Graduate	<u>19</u>	0%	<u>10</u>	0%	<u>5</u>	0%	<u>12</u>	0%	<u>46</u>	0%
Total	97	0%	50	0%	29	0%	60	0%	236	0%
Asian										
First-time DS Freshmen	134	2%	91	9%	39	3%	60	13%	324	4%
Other Undergraduate	479	2%	503	6%	111	2%	536	4%	1,629	4%
First Professional	42	4%	287	17%	0	-	10	6%	339	11%
Graduate	<u>99</u>	2%	<u>102</u>	3%	<u>41</u>	2%	<u>67</u>	2%	<u>309</u>	2%
Total	754	2%	983	7%	191	2%	673	4%	2,601	4%
Pacific Islander										
First-time DS Freshmen	1	0%	0	0%	1	0%	1	0%	3	0%
Other Undergraduate	13	0%	18	0%	10	0%	16	0%	57	0%
First Professional	0	0%	2	0%	0	-	0	0%	2	0%
Graduate	<u>1</u>	0%	<u>4</u>	0%	<u>5</u>	0%	<u>2</u>	0%	<u>12</u>	0%
Total	15	0%	24	0%	16	0%	19	0%	74	0%
African-American Non-Hispanic										
First-time DS Freshmen	582	9%	206	20%	51	4%	78	17%	917	10%
Other Undergraduate	1,620	8%	1,237	14%	213	5%	1,881	15%	4,951	11%
First Professional	35	3%	75	5%	0	-	3	2%	113	4%
Graduate	<u>229</u>	4%	<u>295</u>	8%	<u>58</u>	3%	<u>446</u>	16%	<u>1,028</u>	7%
Total	2,466	7%	1,813	12%	322	4%	2,408	15%	7,009	10%
Hispanic										
First-time DS Freshmen	244	4%	83	8%	28	2%	17	4%	372	4%
Other Undergraduate	647	3%	585	7%	121	3%	282	2%	1,635	4%
First Professional	37	3%	59	4%	0	-	4	3%	100	3%
Graduate	<u>141</u>	2%	<u>126</u>	4%	<u>50</u>	3%	<u>79</u>	3%	<u>396</u>	3%
Total	1,069	3%	853	6%	199	3%	382	2%	2,503	3%
White Non-Hispanic										
First-time DS Freshmen	4,807	78%	567	54%	1,021	84%	264	57%	6,659	75%
Other Undergraduate	16,611	81%	5,595	65%	3,784	81%	9,155	74%	35,145	76%
First Professional	1,007	88%	1,200	72%	0	-	136	86%	2,343	79%
Graduate	<u>4,233</u>	68%	<u>2,228</u>	64%	<u>854</u>	45%	<u>2,036</u>	71%	<u>9,351</u>	65%
Total	26,658	78%	9,590	65%	5,659	72%	11,591	73%	53,498	74%
Nonresident Alien										
First-time DS Freshmen	178	3%	39	4%	32	3%	26	6%	275	3%
Other Undergraduate	650	3%	392	5%	352	7%	326	3%	1,720	4%
First Professional	1	0%	6	0%	0	-	2	1%	9	0%
Graduate	<u>1,407</u>	23%	<u>680</u>	20%	<u>894</u>	47%	<u>197</u>	7%	<u>3,178</u>	22%
Total	2,236	7%	1,117	8%	1,278	16%	551	3%	5,182	7%
Two or More Race										
First-time DS Freshmen	208	3%	58	6%	40	3%	13	3%	319	4%
Other Undergraduate	471	2%	285	3%	80	2%	138	1%	974	2%
First Professional	12	1%	24	1%	0	-	2	1%	38	1%
Graduate	<u>99</u>	2%	<u>39</u>	1%	<u>4</u>	0%	<u>25</u>	1%	<u>167</u>	1%
Total	790	2%	406	3%	124	2%	178	1%	1,498	2%
Grand Total	34,085		14,836		7,818		15,862		72,601	

* Note: Students not reporting ethnicity (Unknown) were removed from the distribution.

Unknown

First-time DS Freshmen	26	30	50	16	122
Other Undergraduate	191	507	188	713	1,599
First Professional	108	90	0	14	212
Graduate	<u>206</u>	<u>255</u>	<u>73</u>	<u>204</u>	<u>738</u>
Total	531	882	311	947	2,671