

**ENROLLMENT SUMMARY REPORT
FALL 2010**

Dr. La Shonda Carter-Boone
Senior Institutional Research Analyst

Office of Institutional Research & Planning
714 Lewis Hall
University of Missouri System

December 2010

IR&P 2010, Report 3

<http://www.umsystem.edu/ums/departments/fa/planning/>

FALL 2010 ENROLLMENT SUMMARY

Executive Summary

This report summarizes the status and trends in fall enrollment at the University of Missouri's four campuses. The report includes information about enrollment, full-time equivalence, new students on campus, undergraduate transfer students, full/part-time status, gender and ethnicity information.

Please note that enrollment totals in this report follow federal and state guidelines, which recommend that students who are classified as "exclusive auditors" are not included in enrollment figures. Consequently, students who are classified as "exclusive auditors" are not included in the campus totals. (Exclusive auditors are defined as students who are enrolled exclusively in courses that are not taken for credit.)

Highlights of the report include:

- The University of Missouri System enrolled a record 71,596 students in Fall 2010, 2,212 more students than the record 69,384 students that enrolled in Fall 2009. Total enrollment at the University has increased by 27% over the past 10 years (Table 1).
- In Fall 2010, the University of Missouri System enrolled 53,358 undergraduate students (75% of total headcount), 3,006 first professional students (4%), and 15,232 graduate students (21%) (Table 1).
- Over the past 10 years, undergraduate headcount has increased by 25%, first-professional headcount by 11% and graduate headcount by 38% (Table 1).
- Since 2006, total student credit hours and total full-time equivalence have both increased by 14% (Table 2.0).
- Over the past five years, total full-time resident headcount has increased 12% (Table 4.0a) and total full-time non-resident headcount has increased 33% (Table 4.0b).
- Women comprised 53% of total enrollment in Fall 2010. UM-St. Louis had the largest percentage of women (61%) and MO S&T had the highest proportion of men (78%) (Table 5).
- Of all the students of known ethnicity, under-represented minorities (American Indian/Alaskan Native, African-American, and Hispanic) represented 13% of the University of Missouri System's total enrollment (Table 5).

Technical Notes

These tables provide counts of students enrolled in the fall of 2010 on-schedule credit courses at the four campuses of the University of Missouri. Five and ten-year trend data are included in the tables for comparison purposes. The data used in this report were generated from the EMSAS Fall Enrollment files, which are submitted to the Missouri Department of Higher Education (MDHE) each fall. Data included in EMSAS files were prepared in the admissions and registration offices at the respective campuses. The data are counts as of the census date at each campus, which is defined as the end of the fourth week of classes for the fall session. The source data are based on the reporting guidelines and definitions of the Missouri Department of Higher Education (MDHE) and the National Center for Educational Statistics (NCES).

Tables in the Table 2 series (2.0-2.4) include counts of on- and off-campus students. The columns titled "On-Campus", according to the MDHE guidelines, include students enrolled geographically on campus and students in the Graduate Engineering (Residence) Centers. All other students are counted in the columns headed "Off-Campus", which include students enrolled in extension courses and students that receive H.S. advanced credit from the Kansas City and St. Louis campuses. The tables of the Table 2 series also include full-time equivalence (FTE) counts.

Tables in the Table 4 series (4.0a-4.4b) include counts of resident and non-resident students by level and course load (full-time vs. part-time).

Definitions of FTE:

Undergraduate FTE = Total Student Credit Hours/15

Graduate FTE = Total Student Credit Hours/12

Dentistry FTE = Headcount

Law FTE = Total Student Credit Hours/15

UMC Medicine FTE = Headcount

UMKC Medicine FTE = Headcount

Optometry FTE = Headcount

Pharmacy FTE = Headcount

Vet Medicine FTE = Headcount

Caveats

First- and second-year students in the Medicine MD program at UMKC are included in the undergraduate counts of the Table 2 and Table 4 series.

Enrollment counts for students in "Off-Schedule" courses, which include intersession courses, short courses, Video Credit courses, and other courses which begin and end on dates other than those for the regular academic semester, are accumulated during the term in which the courses began and are reported the semester following their end date.

Figure 1: Rate of Change in Fall Headcount by Student Level and Campus, Fall 2001 to Fall 2010

UNIVERSITY OF MISSOURI SYSTEM

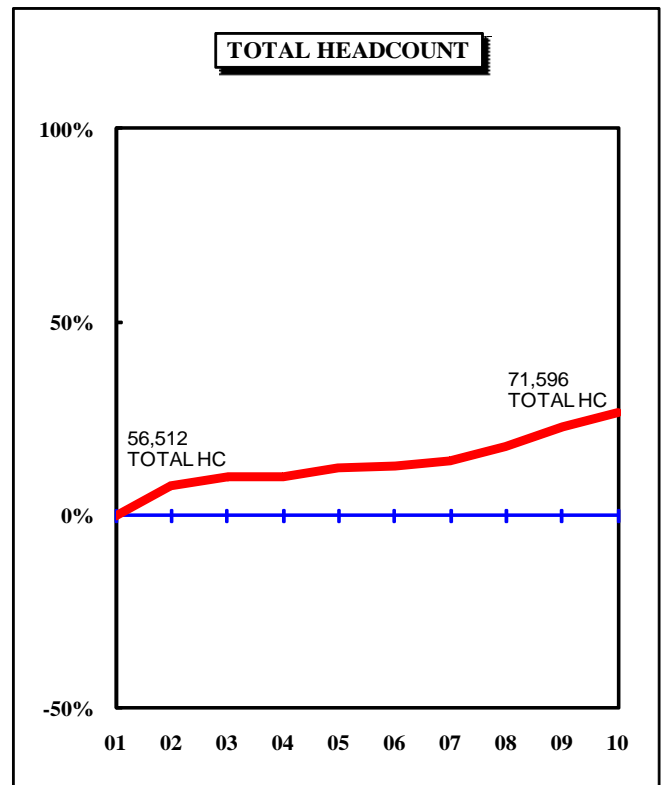
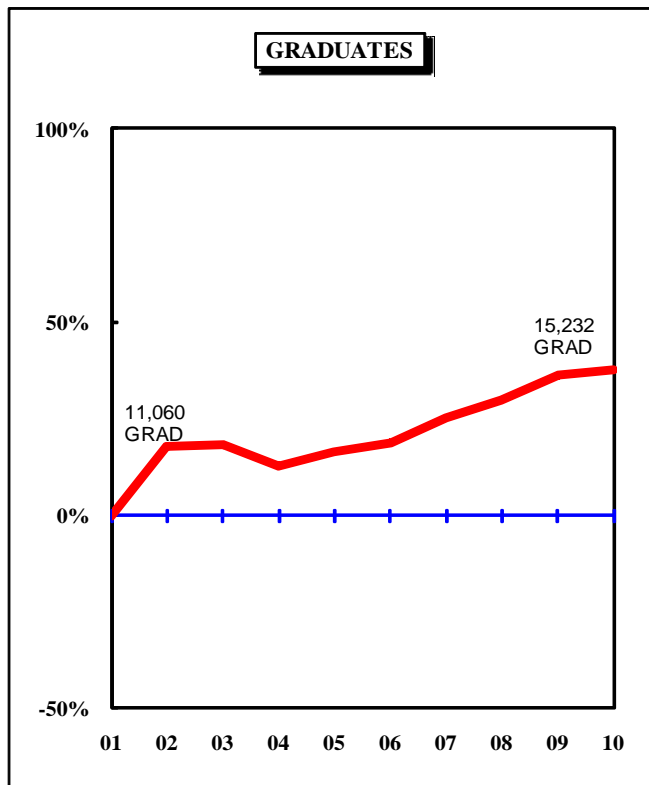
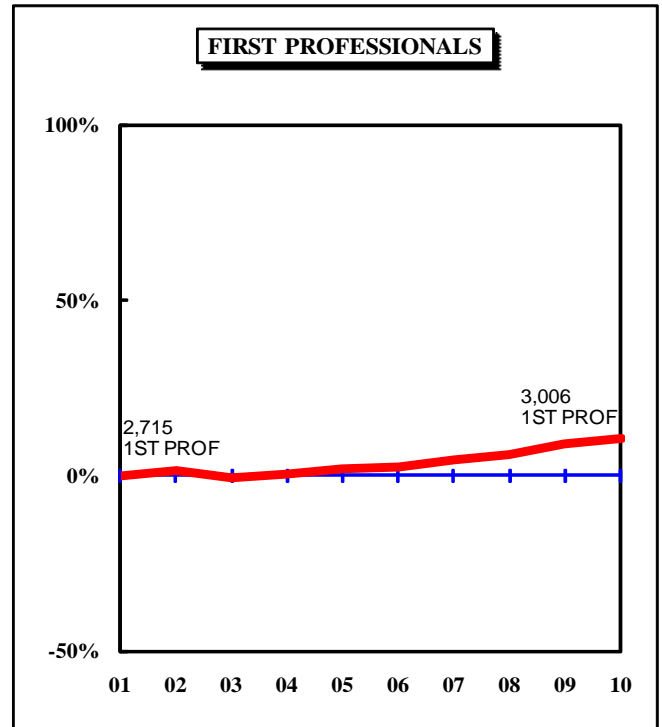
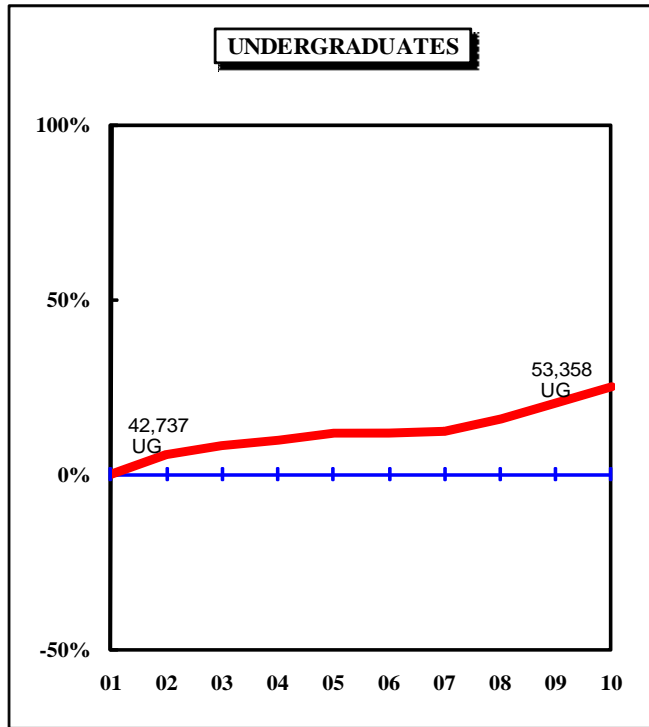


Figure 1.1: Rate of Change in Fall Headcount by Student Level and Campus, Fall 2001 to Fall 2010

UNIVERSITY OF MISSOURI-COLUMBIA

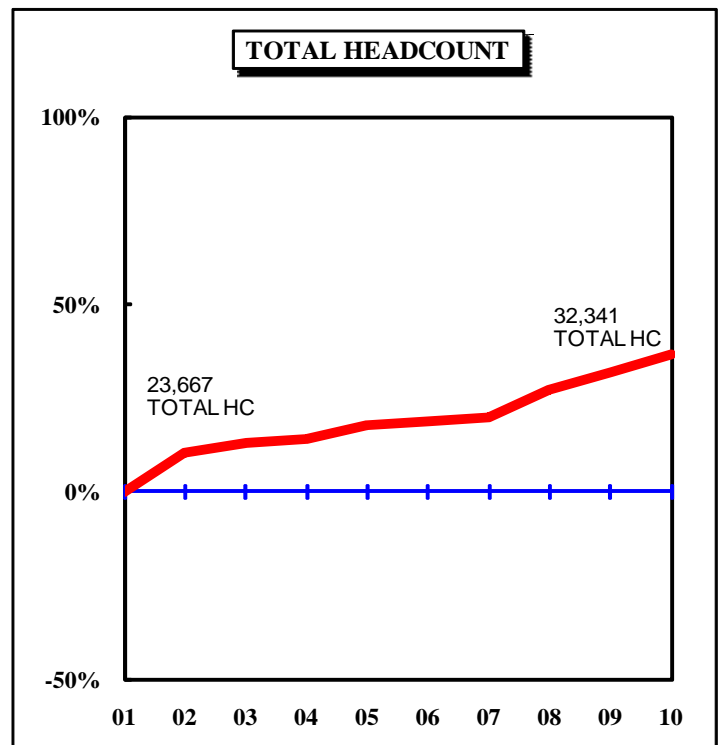
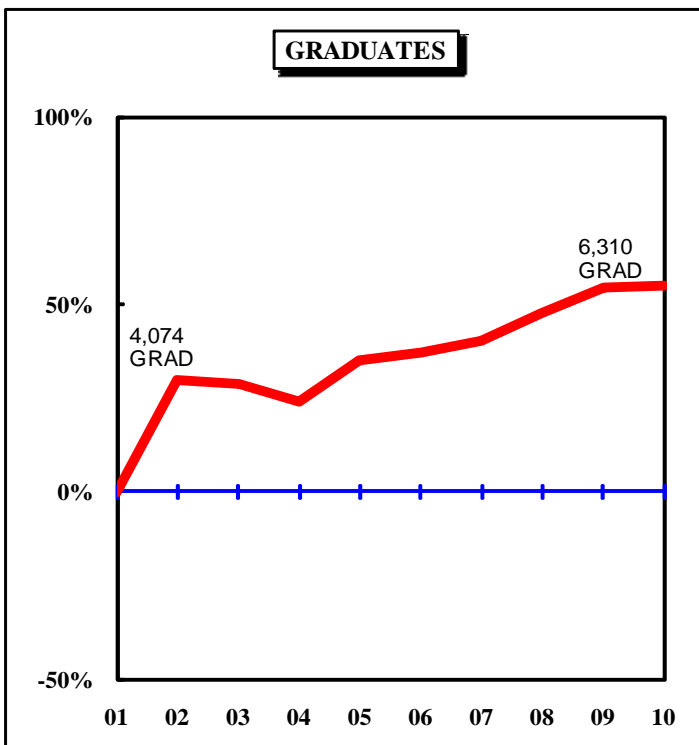
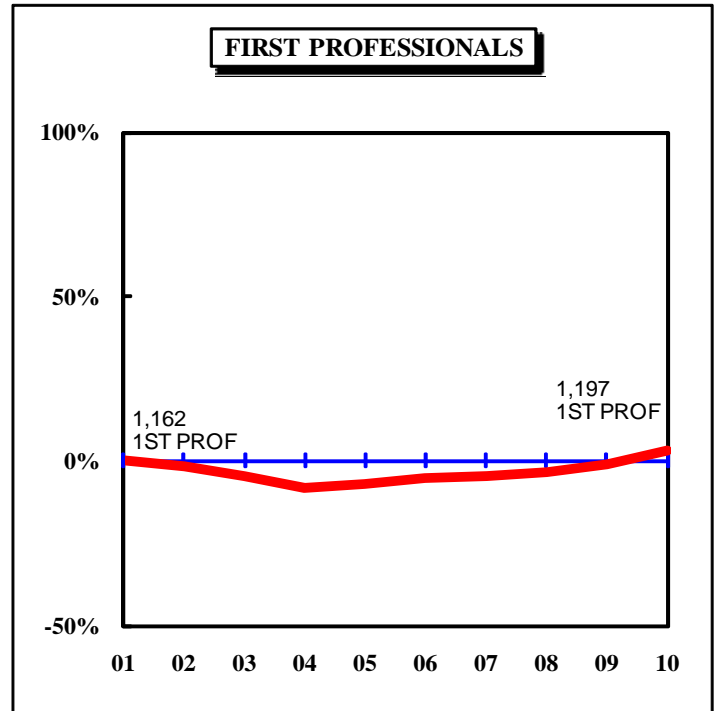
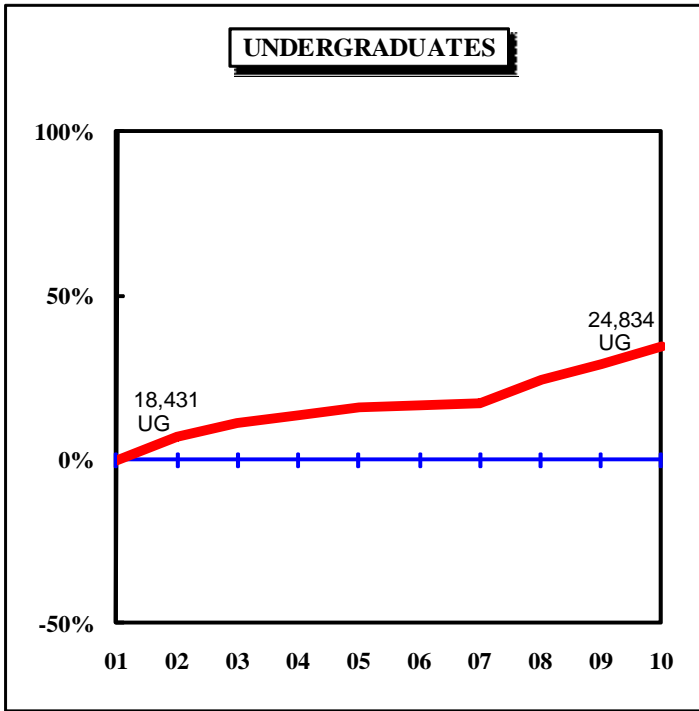


Figure 1.2: Rate of Change in Fall Headcount by Student Level and Campus, Fall 2001 to Fall 2010

UNIVERSITY OF MISSOURI-KANSAS CITY

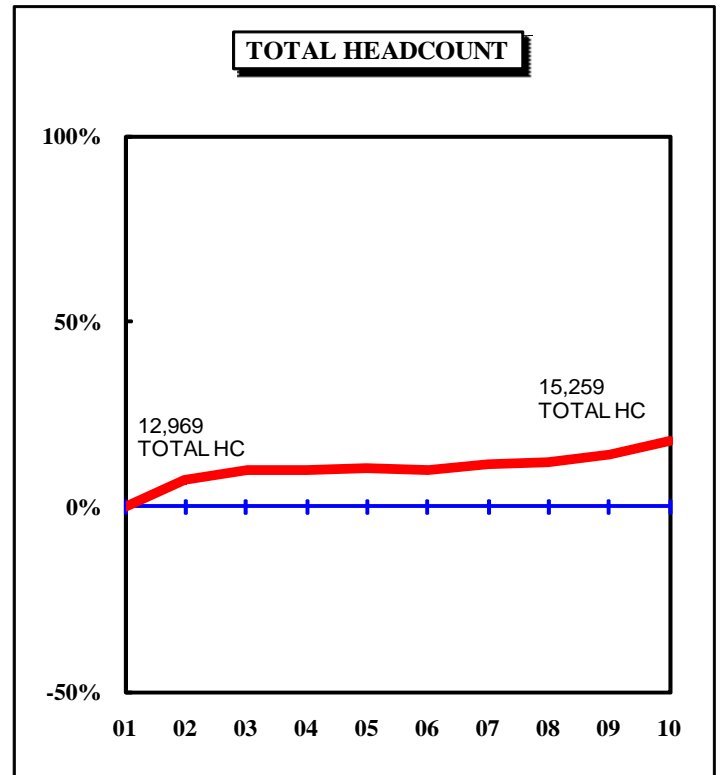
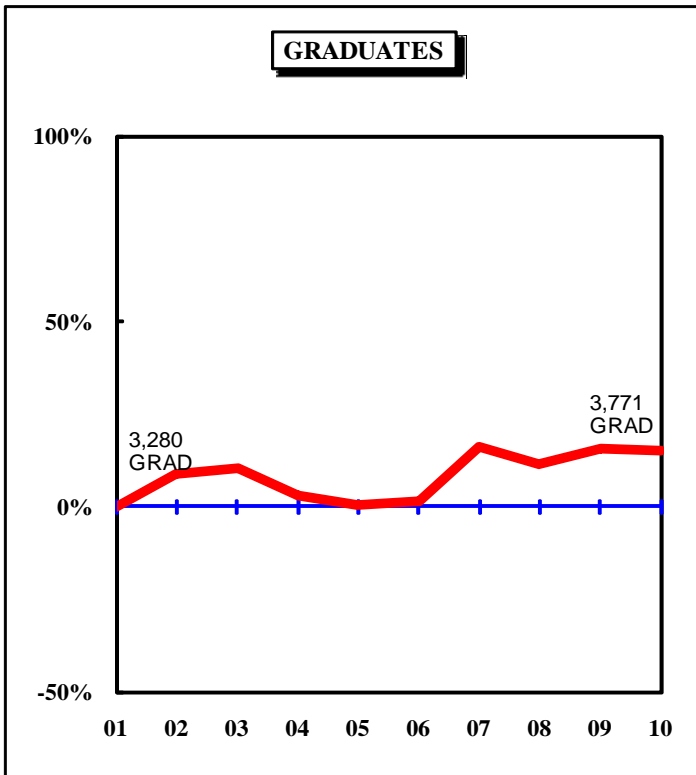
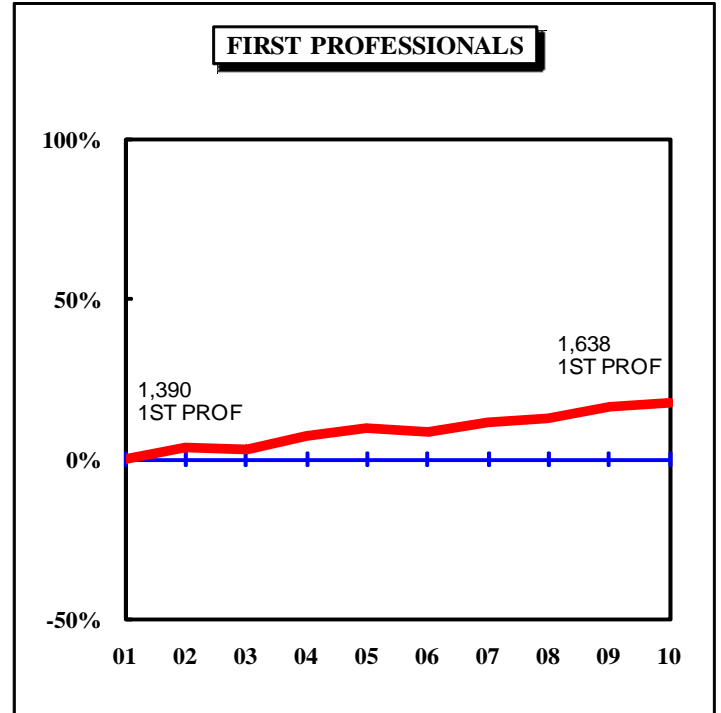
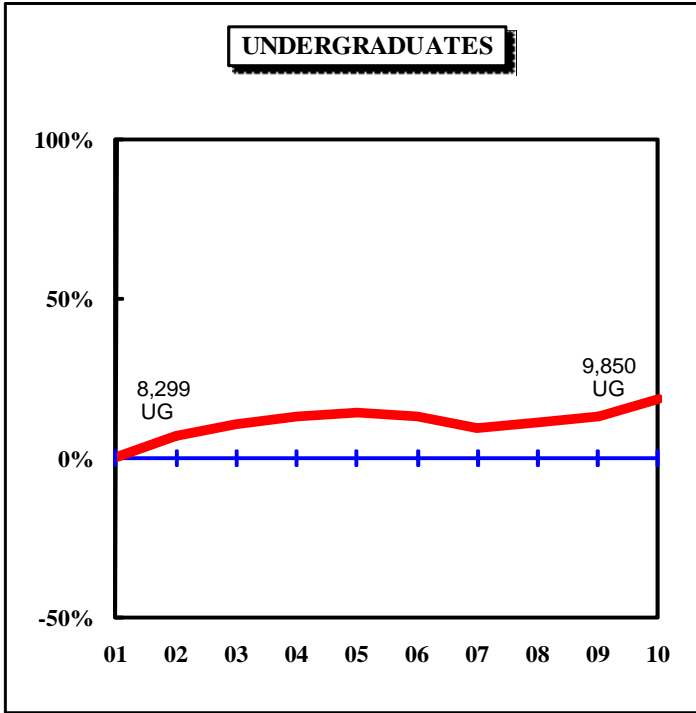


Figure 1.3: Rate of Change in Fall Headcount by Student Level and Campus, Fall 2001 to Fall 2010

MISSOURI S&T

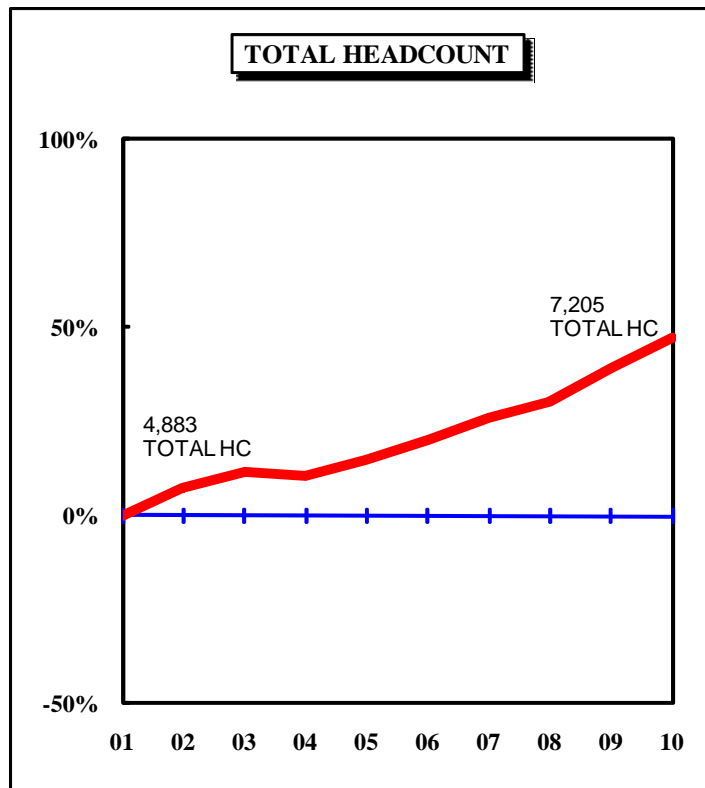
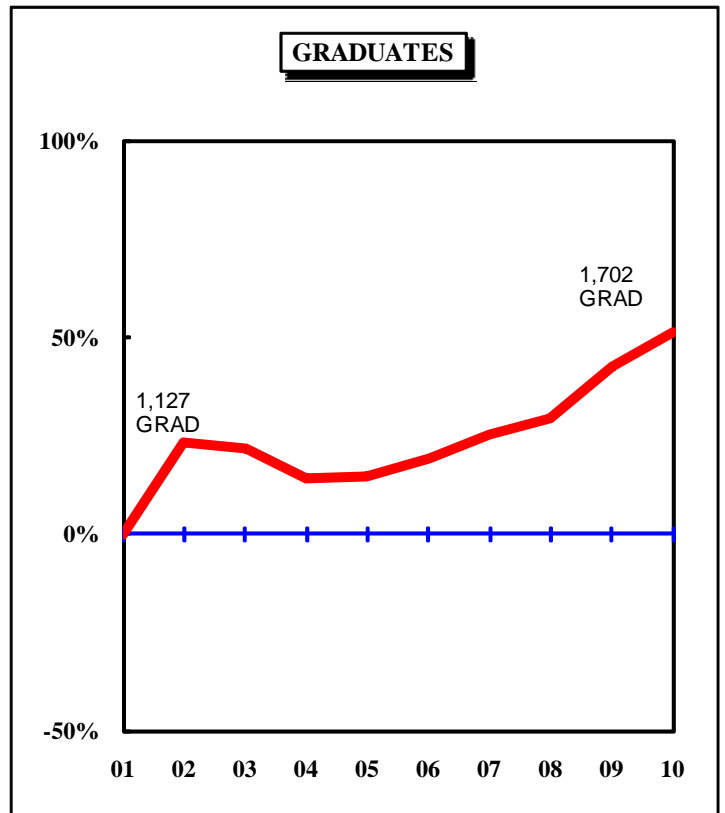
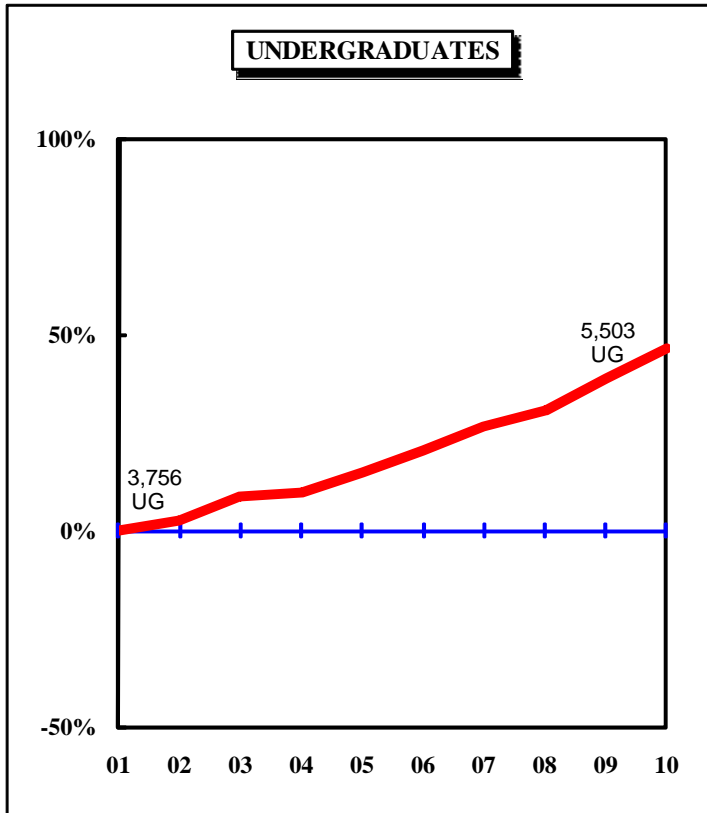


Figure 1.4: Rate of Change in Fall Headcount by Student Level and Campus, Fall 2001 to Fall 2010

UNIVERSITY OF MISSOURI-ST. LOUIS

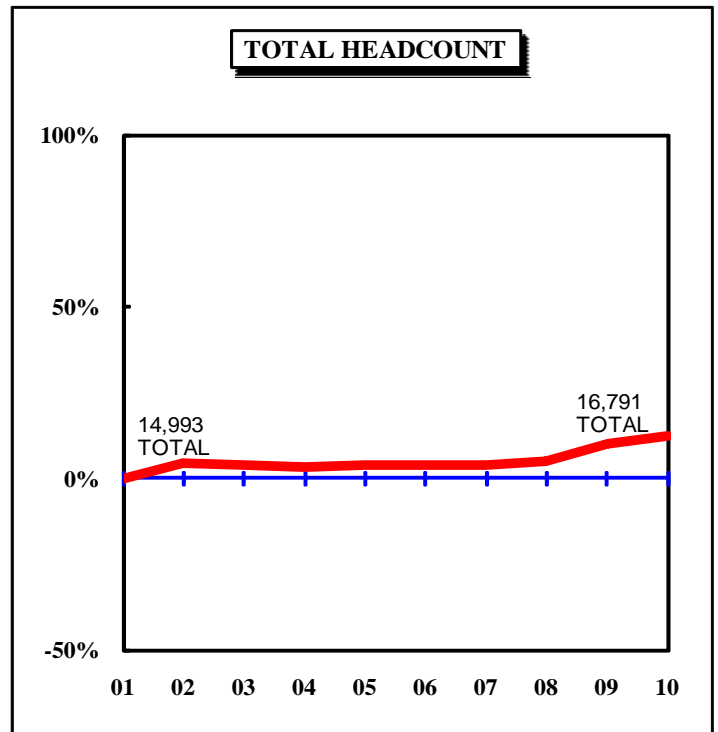
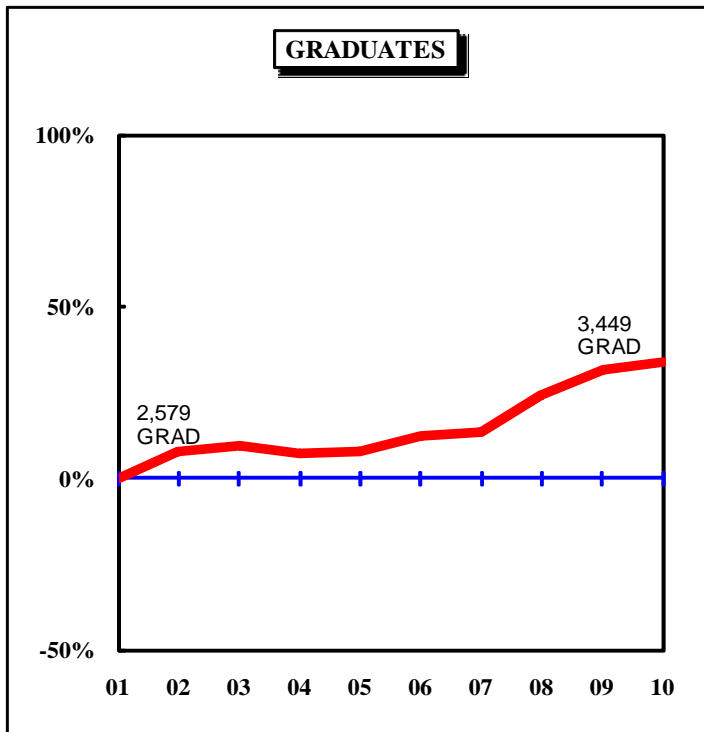
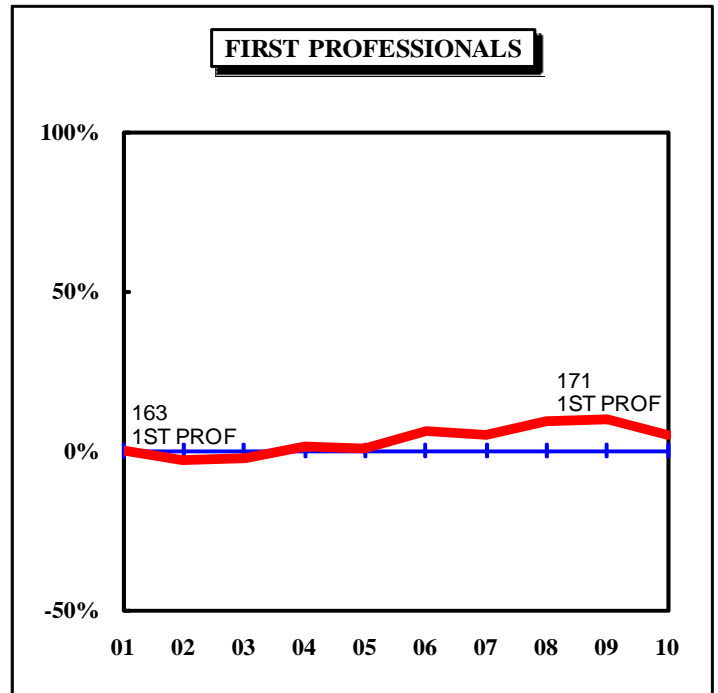
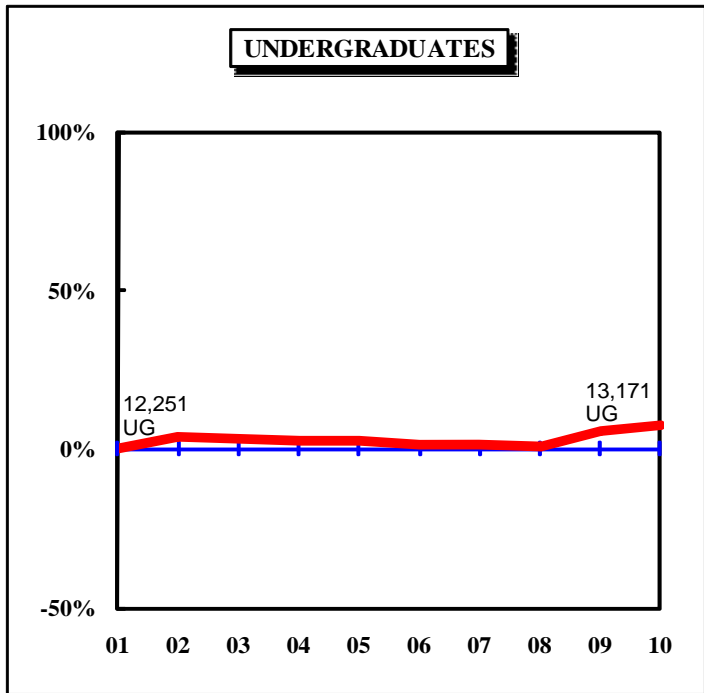
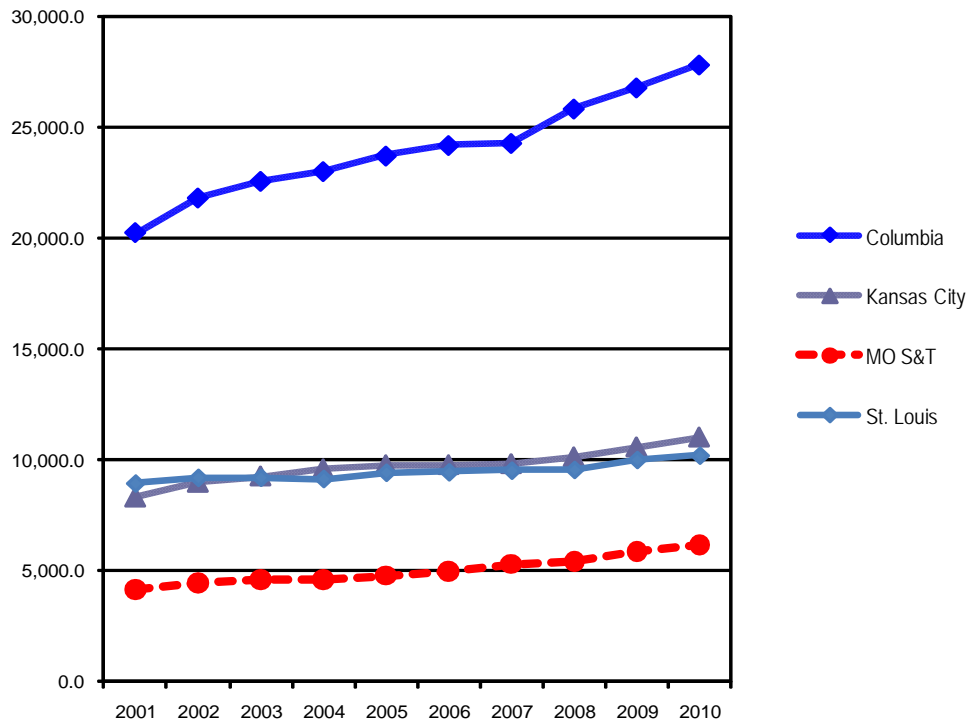


Table 1. Headcount History by Student Level and Campus, Fall 2001 to Fall 2010

Campus	Level	2001	2002	2003	2004	2005	2006	2007	2008	2009	2010	10 yr. Change
Columbia	Undergraduate	18,431	19,698	20,441	20,883	21,335	21,484	21,586	22,980	23,799	24,834	35%
	Professional	1,162	1,146	1,109	1,069	1,083	1,102	1,111	1,126	1,150	1,197	3%
	Graduate	4,074	5,280	5,255	5,051	5,512	5,598	5,708	6,024	6,288	6,310	55%
	Total	23,667	26,124	26,805	27,003	27,930	28,184	28,405	30,130	31,237	32,341	37%
Kansas City	Undergraduate	8,299	8,870	9,167	9,393	9,487	9,383	9,094	9,261	9,381	9,850	19%
	Professional	1,390	1,444	1,435	1,494	1,523	1,509	1,548	1,569	1,623	1,638	18%
	Graduate	3,280	3,567	3,624	3,369	3,296	3,321	3,800	3,651	3,795	3,771	15%
	Total*	12,969	13,881	14,226	14,256	14,306	14,213	14,442	14,481	14,799	15,259	18%
MO S&T	Undergraduate	3,756	3,849	4,089	4,119	4,311	4,515	4,752	4,911	5,206	5,503	47%
	Graduate	1,127	1,391	1,370	1,285	1,289	1,343	1,414	1,456	1,608	1,702	51%
	Total	4,883	5,240	5,459	5,404	5,600	5,858	6,166	6,367	6,814	7,205	48%
St. Louis	Undergraduate	12,251	12,715	12,624	12,572	12,606	12,459	12,432	12,358	12,966	13,171	8%
	Professional	163	158	159	165	164	173	171	178	179	171	5%
	Graduate	2,579	2,785	2,816	2,761	2,778	2,896	2,924	3,205	3,389	3,449	34%
	Total*	14,993	15,658	15,599	15,498	15,548	15,528	15,527	15,741	16,534	16,791	12%
System	Undergraduate	42,737	45,132	46,321	46,967	47,739	47,841	47,864	49,510	51,352	53,358	25%
	Professional	2,715	2,748	2,703	2,728	2,770	2,784	2,830	2,873	2,952	3,006	11%
	Graduate	11,060	13,023	13,065	12,466	12,875	13,158	13,846	14,336	15,080	15,232	38%
	Grand Total	56,512	60,903	62,089	62,161	63,384	63,783	64,540	66,719	69,384	71,596	27%

*The total enrollment for UMKC and UMSL include students taking college credit at their high school through dual credit programs. When these students are excluded from the headcount, the total enrollment for UMKC is 13,863 and the total enrollment for UMSL is 13,095.

Figure 2. Full-time Equivalence History by Campus, 2001 to 2010



Source: EMSAS Fall Enrollment file
IR&P/LCB 11/10

Full-time Equivalent History by Campus, 2001 to 2010

Campus	2001	2002	2003	2004	2005	2006	2007	2008	2009	2010
Columbia	20,231.0	21,804.0	22,556.0	23,000.0	23,703.6	24,182.7	24,280.4	25,840.2	26,797.4	27,838.4
Kansas City	8,334.0	9,001.0	9,290.0	9,607.7	9,795.3	9,797.9	9,843.8	10,152.4	10,597.5	11,042.8
MO S&T	4,148.0	4,481.0	4,604.0	4,594.1	4,799.9	4,982.6	5,323.0	5,452.9	5,860.4	6,162.2
St. Louis	8,958.0	9,214.0	9,224.0	9,162.0	9,451.9	9,467.5	9,546.9	9,578.5	10,031.8	10,227.7
Total	41,671.0	44,500.0	45,674.0	46,363.8	47,750.7	48,430.7	48,994.0	51,023.9	53,287.1	55,271.1

(Totals may not add due to rounding.)

Table 2.0 Headcounts, Full-time Equivalence, and Student Credit Hours by Location, Fall 2006 to Fall 2010

	<u>University of Missouri System</u>															
	<u>On-Campus</u>					<u>Off-Campus</u>					<u>Total</u>					
	FS06	FS07	FS08	FS09	FS10	FS06	FS07	FS08	FS09	FS10	FS06	FS07	FS08	FS09	FS10	5-yr. Change
Headcount by Student Level																
Undergraduate																
Fresh & Soph DS	17,570	17,898	19,280	19,833	20,398	15	30	28	46	66	17,585	17,928	19,308	19,879	20,464	16%
Junior & Senior DS	23,876	23,862	23,990	25,161	26,464	147	222	254	283	389	24,023	24,084	24,244	25,444	26,853	12%
Nondegree	<u>784</u>	<u>737</u>	<u>861</u>	<u>859</u>	<u>822</u>	<u>5,449</u>	<u>5,115</u>	<u>5,097</u>	<u>5,170</u>	<u>5,219</u>	<u>6,233</u>	<u>5,852</u>	<u>5,958</u>	<u>6,029</u>	<u>6,041</u>	-3%
Total Undergraduate	42,230	42,497	44,131	45,853	47,684	5,611	5,367	5,379	5,499	5,674	47,841	47,864	49,510	51,352	53,358	12%
First Professional																
Dentistry (DDS)	393	401	399	401	405	0	0	0	0	0	393	401	399	401	405	3%
Law (JD)	971	956	945	943	932	0	0	0	0	0	971	956	945	943	932	-4%
Medicine (MD)	738	759	767	769	780	0	0	0	0	0	738	759	767	769	780	6%
Optometry (OD)	173	171	178	179	171	0	0	0	0	0	173	171	178	179	171	-1%
Pharmacy (DPharm)	238	238	298	339	352	0	27	0	0	0	238	265	298	339	352	48%
Vet. Med. (DVM)	<u>271</u>	<u>278</u>	<u>286</u>	<u>321</u>	<u>366</u>	<u>0</u>	<u>0</u>	<u>0</u>	<u>0</u>	<u>0</u>	<u>271</u>	<u>278</u>	<u>286</u>	<u>321</u>	<u>366</u>	35%
Total First Professional	2,784	2,803	2,873	2,952	3,006	0	27	0	0	0	2,784	2,830	2,873	2,952	3,006	8%
Graduate																
Masters & Ed. Spec.	7,456	7,544	7,629	7,907	8,150	1,321	1,571	1,802	2,156	2,053	8,777	9,115	9,431	10,063	10,203	16%
Doctoral	3,376	3,414	3,526	3,766	3,845	112	101	120	124	183	3,488	3,515	3,646	3,890	4,028	15%
Nondegree	<u>430</u>	<u>841</u>	<u>699</u>	<u>642</u>	<u>509</u>	<u>463</u>	<u>375</u>	<u>560</u>	<u>485</u>	<u>401</u>	<u>893</u>	<u>1,216</u>	<u>1,259</u>	<u>1,127</u>	<u>910</u>	2%
Total Graduate	11,262	11,799	11,854	12,315	12,504	1,896	2,047	2,482	2,765	2,637	13,158	13,846	14,336	15,080	15,141	15%
Grand Total Headcount	56,276	57,099	58,858	61,120	63,194	7,507	7,441	7,861	8,264	8,311	63,783	64,540	66,719	69,384	71,505	12%
FTE Enrollments by Student Level																
Undergraduate	36,576	36,849	38,546.8	40,133.0	41,824.1	1,805	1,792	1,747.1	1,835.7	1,913.2	38,381	38,642	40,294	41,969	43,737	14%
First Professional	2,751	2,773	2,840.9	2,917.3	2,964.1	0	27	0.0	0.0	0.0	2,751	2,800	2,841	2,917	2,964	8%
Graduate	<u>6,573</u>	<u>6,721</u>	<u>6,875.1</u>	<u>7,204.0</u>	<u>7,447.0</u>	<u>725</u>	<u>832</u>	<u>1,014.0</u>	<u>1,197.2</u>	<u>1,122.6</u>	<u>7,299</u>	<u>7,553</u>	<u>7,889</u>	<u>8,401</u>	<u>8,570</u>	17%
Total FTE	45,900	46,343	48,262.8	50,254.2	52,235.2	2,530	2,651	2,761.1	3,032.9	3,035.8	48,430.7	48,994.1	51,023.9	53,287.1	55,271.0	14%
SCH Produced by Student Level																
Undergraduate	548,634	552,740	578,202	601,995	627,362	27,074	26,885	26,207	27,536	28,699	575,708	579,625	604,409	629,531	656,061	14%
First Professional	48,162	47,791	48,067	50,808	54,568	0	353	0	0	0	48,162	48,144	48,067	50,808	54,568	13%
Graduate	<u>78,881</u>	<u>80,655</u>	<u>82,499</u>	<u>86,448</u>	<u>89,365</u>	<u>8,704</u>	<u>9,978</u>	<u>12,168</u>	<u>14,366</u>	<u>13,471</u>	<u>87,585</u>	<u>90,633</u>	<u>94,667</u>	<u>100,814</u>	<u>102,835</u>	17%
Total SCH	675,677	681,186	708,767	739,251	771,294	35,778	37,216	38,375	41,902	42,170	711,455	718,402	747,142	781,153	813,463	14%

Source: EMSAS Fall Enrollment file

Table 2.1 Headcounts, Full-time Equivalence, and Student Credit Hours by Location, Fall 2006 to Fall 2010

	<u>On-Campus</u>					<u>Columbia</u> <u>Off-Campus</u>					<u>Total</u>					5-yr. Change
	FS06	FS07	FS08	FS09	FS10	FS06	FS07	FS08	FS09	FS10	FS06	FS07	FS08	FS09	FS10	
Headcount by Student Level																
Undergraduate																
Fresh & Soph DS	10,501	10,609	11,631	12,069	12,548	10	14	22	25	21	10,511	10,623	11,653	12,094	12,569	20%
Junior & Senior DS	10,588	10,637	10,827	11,247	11,811	105	126	168	187	222	10,693	10,763	10,995	11,434	12,033	13%
Nondegree	<u>209</u>	<u>180</u>	<u>229</u>	<u>200</u>	<u>166</u>	<u>71</u>	<u>20</u>	<u>103</u>	<u>71</u>	<u>66</u>	<u>280</u>	<u>200</u>	<u>332</u>	<u>271</u>	<u>232</u>	-17%
Total Undergraduate	21,298	21,426	22,687	23,516	24,525	186	160	293	283	309	21,484	21,586	22,980	23,799	24,834	16%
First Professional																
Law (JD)	456	458	453	444	443	0	0	0	0	0	456	458	453	444	443	-3%
Medicine (MD)	375	375	387	385	388	0	0	0	0	0	375	375	387	385	388	3%
Vet. Med. (DVM)	<u>271</u>	<u>278</u>	<u>286</u>	<u>321</u>	<u>366</u>	<u>0</u>	<u>0</u>	<u>0</u>	<u>0</u>	<u>0</u>	<u>271</u>	<u>278</u>	<u>286</u>	<u>321</u>	<u>366</u>	35%
Total First Professional	1,102	1,111	1,126	1,150	1,197	0	0	0	0	0	1,102	1,111	1,126	1,150	1,197	9%
Graduate																
Masters & Ed. Spec.	2,160	2,192	2,261	2,243	2,287	800	914	962	1,238	1,190	2,960	3,106	3,223	3,481	3,477	17%
Doctoral	2,019	2,029	2,051	2,172	2,178	82	78	81	85	147	2,101	2,107	2,132	2,257	2,325	11%
Nondegree	<u>185</u>	<u>215</u>	<u>250</u>	<u>166</u>	<u>186</u>	<u>352</u>	<u>280</u>	<u>419</u>	<u>384</u>	<u>322</u>	<u>537</u>	<u>495</u>	<u>669</u>	<u>550</u>	<u>508</u>	-5%
Total Graduate	4,364	4,436	4,562	4,581	4,651	1,234	1,272	1,462	1,707	1,659	5,598	5,708	6,024	6,288	6,310	13%
Grand Total																
Headcount	26,764	26,973	28,375	29,247	30,373	1,420	1,432	1,755	1,990	1,968	28,184	28,405	30,130	31,237	32,341	15%
FTE Enrollments by Student Level																
Undergraduate	19,712.3	19,785.3	21,097.0	21,837.7	22,785.4	68.3	61.3	99.7	105.0	113.9	19,781	19,847	21,197	21,943	22,899	16%
First Professional	1,083.4	1,093.8	1,108.2	1,134.3	1,174.6	0.0	0.0	0.0	0.0	0.0	1,083	1,094	1,108	1,134	1,175	8%
Graduate	<u>2,820.9</u>	<u>2,815.4</u>	<u>2,951.1</u>	<u>2,996.1</u>	<u>3,071.5</u>	<u>497.8</u>	<u>524.6</u>	<u>584.3</u>	<u>724.3</u>	<u>693.0</u>	<u>3,319</u>	<u>3,340</u>	<u>3,535</u>	<u>3,720</u>	<u>3,765</u>	13%
Total FTE	23,616.6	23,694.5	25,156.3	25,968.2	27,031.5	566.1	585.9	683.9	829.3	806.9	24,182.7	24,280.4	25,840.2	26,797.4	27,838.4	15%
SCH Produced by Student Level																
Undergraduate	295,684	296,780	316,455	327,566	341,780.5	1,025	919	1,495	1,575	1,709	296,709	297,699	317,950	329,141	343,490	16%
First Professional	17,792	17,256	16,596	17,899	18,820.5	0	0	0	0	0	17,792	17,256	16,596	17,899	18,821	6%
Graduate	<u>33,851</u>	<u>33,785</u>	<u>35,413</u>	<u>35,954</u>	<u>36,858.0</u>	<u>5,973</u>	<u>6,295</u>	<u>7,011</u>	<u>8,691</u>	<u>8,316</u>	<u>39,824</u>	<u>40,080</u>	<u>42,424</u>	<u>44,645</u>	<u>45,174</u>	13%
Total SCH	347,327	347,821	368,463	381,418	397,459.0	6,998	7,214	8,506	10,266	10,025	354,325	355,035	376,969	391,684	407,484	15%

Source: EMSAS Fall Enrollment file

Table 2.2 Headcounts, Full-time Equivalence, and Student Credit Hours by Location, Fall 2006 to Fall 2010

	<u>On-Campus</u>					<u>Off-Campus</u>					<u>Total</u>					5-yr. Change
	FS06	FS07	FS08	FS09	FS10	FS06	FS07	FS08	FS09	FS10	FS06	FS07	FS08	FS09	FS10	
Headcount by Student Level																
Undergraduate																
Fresh & Soph DS	2,880	3,029	3,017	3,126	3,241	0	13	0	0	0	2,880	3,042	3,017	3,126	3,241	13%
Junior & Senior DS	4,187	3,890	4,330	4,591	4,943	0	43	4	4	2	4,187	3,933	4,334	4,595	4,945	18%
Nondegree	<u>284</u>	<u>255</u>	<u>307</u>	<u>313</u>	<u>268</u>	<u>2,032</u>	<u>1,864</u>	<u>1,603</u>	<u>1,347</u>	<u>1,396</u>	<u>2,316</u>	<u>2,119</u>	<u>1,910</u>	<u>1,660</u>	<u>1,664</u>	-28%
Total Undergraduate	7,351	7,174	7,654	8,030	8,452	2,032	1,920	1,607	1,351	1,398	9,383	9,094	9,261	9,381	9,850	5%
First Professional																
Dentistry (DDS)	393	401	399	401	405	0	0	0	0	0	393	401	399	401	405	3%
Law (JD)	515	498	492	499	489	0	0	0	0	0	515	498	492	499	489	-5%
Medicine (MD)	363	384	380	384	392	0	0	0	0	0	363	384	380	384	392	8%
Pharmacy (DPharm)	<u>238</u>	<u>238</u>	<u>298</u>	<u>339</u>	<u>352</u>	<u>0</u>	<u>27</u>	<u>0</u>	<u>0</u>	<u>0</u>	<u>238</u>	<u>265</u>	<u>298</u>	<u>339</u>	<u>352</u>	48%
Total First Professional	1,509	1,521	1,569	1,623	1,638	0	27	0	0	0	1,509	1,548	1,569	1,623	1,638	9%
Graduate																
Masters & Ed. Spec.	2,571	2,623	2,670	2,801	2,890	1	54	53	32	3	2,572	2,677	2,723	2,833	2,893	12%
Doctoral	522	536	624	656	664	0	0	7	0	0	522	536	631	656	664	27%
Nondegree	<u>143</u>	<u>505</u>	<u>297</u>	<u>306</u>	<u>214</u>	<u>84</u>	<u>82</u>	<u>0</u>	<u>0</u>	<u>0</u>	<u>227</u>	<u>587</u>	<u>297</u>	<u>306</u>	<u>214</u>	-6%
Total Graduate	3,236	3,664	3,591	3,763	3,768	85	136	60	32	3	3,321	3,800	3,651	3,795	3,771	14%
Grand Total																
Headcount	12,096	12,359	12,814	13,416	13,858	2,117	2,083	1,667	1,383	1,401	14,213	14,442	14,481	14,799	15,259	7%
FTE Enrollments by Student Level																
Undergraduate	6,032.3	5,887.2	6,272.8	6,647.9	7,047.1	495.3	512.7	389.3	324.5	347.5	6,528	6,400	6,662	6,972	7,395	13%
First Professional	1,495.0	1,507.8	1,554.7	1,603.9	1,618.5	0.0	27.0	0.0	0.0	0.0	1,495	1,535	1,555	1,604	1,619	8%
Graduate	<u>1,760.3</u>	<u>1,873.8</u>	<u>1,902.4</u>	<u>2,006.6</u>	<u>2,028.0</u>	<u>14.9</u>	<u>35.3</u>	<u>33.3</u>	<u>14.6</u>	<u>1.6</u>	<u>1,775</u>	<u>1,909</u>	<u>1,936</u>	<u>2,021</u>	<u>2,030</u>	14%
Total FTE	9,287.6	9,268.8	9,729.9	10,258.5	10,693.6	510.2	575.0	422.5	339.1	349.1	9,797.8	9,843.8	10,152.4	10,597.5	11,042.7	13%
SCH Produced by Student Level																
Undergraduate	90,485	88,308	94,092	99,719	105,707	7,430	7,691	5,839	4,867	5,213	97,915	95,999	99,931	104,586	110,920	13%
First Professional	26,941	27,029	27,906	29,239	32,192	0	353	0	0	0	26,941	27,382	27,906	29,239	32,192	19%
Graduate	<u>21,124</u>	<u>22,486</u>	<u>22,829</u>	<u>24,080</u>	<u>24,337</u>	<u>179</u>	<u>423</u>	<u>399</u>	<u>175</u>	<u>19</u>	<u>21,303</u>	<u>22,909</u>	<u>23,228</u>	<u>24,255</u>	<u>24,356</u>	14%
Total SCH	138,550	137,823	144,827	153,037	162,236	7,609	8,467	6,238	5,042	5,232	146,159	146,290	151,065	158,079	167,468	15%

Source: EMSAS Fall Enrollment file

Table 2.3 Headcounts, Full-time Equivalence, and Student Credit Hours by Location, Fall 2006 to Fall 2010

	<u>Missouri S&T</u>															5-yr. Change
	<u>On-Campus</u>					<u>Off-Campus</u>					<u>Total</u>					
	FS06	FS07	FS08	FS09	FS10	FS06	FS07	FS08	FS09	FS10	FS06	FS07	FS08	FS09	FS10	
Headcount by Student Level																
Undergraduate																
Fresh & Soph DS	1,993	2,127	2,180	2,291	2,347	0	0	0	13	42	1,993	2,127	2,180	2,304	2,389	20%
Junior & Senior DS	2,472	2,578	2,693	2,829	2,994	0	0	2	12	74	2,472	2,578	2,695	2,841	3,068	24%
Nondegree	<u>34</u>	<u>35</u>	<u>24</u>	<u>36</u>	<u>39</u>	<u>16</u>	<u>12</u>	<u>12</u>	<u>25</u>	<u>7</u>	<u>50</u>	<u>47</u>	<u>36</u>	<u>61</u>	<u>46</u>	-8%
Total Undergraduate	4,499	4,740	4,897	5,156	5,380	16	12	14	50	123	4,515	4,752	4,911	5,206	5,503	22%
Graduate																
Masters & Ed. Spec.	540	557	523	593	686	434	502	547	575	530	974	1,059	1,070	1,168	1,216	25%
Doctoral	338	331	345	401	440	12	13	19	23	26	350	344	364	424	466	33%
Nondegree	<u>12</u>	<u>8</u>	<u>2</u>	<u>3</u>	<u>13</u>	<u>7</u>	<u>3</u>	<u>20</u>	<u>13</u>	<u>7</u>	<u>19</u>	<u>11</u>	<u>22</u>	<u>16</u>	<u>20</u>	5%
Total Graduate	890	896	870	997	1,139	453	518	586	611	563	1,343	1,414	1,456	1,608	1,702	27%
Grand Total																
Headcount	5,389	5,636	5,767	6,153	6,519	469	530	600	661	686	5,858	6,166	6,367	6,814	7,205	23%
FTE Enrollments by Student Level																
Undergraduate	4,196.7	4,480.5	4,618.8	4,867.6	5,068.1	3.1	2.7	2.9	13.9	58.4	4,200	4,483	4,622	4,882	5,127	22%
Graduate	<u>615.2</u>	<u>611.1</u>	<u>587.8</u>	<u>703.0</u>	<u>796.9</u>	<u>167.7</u>	<u>228.7</u>	<u>243.4</u>	<u>275.9</u>	<u>238.8</u>	<u>783</u>	<u>840</u>	<u>831</u>	<u>979</u>	<u>1,036</u>	32%
Total FTE	4,811.9	5,091.6	5,206.6	5,570.6	5,865.0	170.8	231.4	246.3	289.9	297.2	4,982.7	5,323.0	5,452.9	5,860.4	6,162.2	24%
SCH Produced by Student Level																
Undergraduate	62,950	67,208	69,282	73,014	76,021	46	40	43	209	876	62,996	67,248	69,325	73,223	76,897	22%
Graduate	<u>7,382</u>	<u>7,333</u>	<u>7,054</u>	<u>8,436</u>	<u>9,563</u>	<u>2,012</u>	<u>2,744</u>	<u>2,921</u>	<u>3,311</u>	<u>2,866</u>	<u>9,394</u>	<u>10,077</u>	<u>9,975</u>	<u>11,747</u>	<u>12,429</u>	32%
Total SCH	70,332	74,541	76,336	81,450	85,584	2,058	2,784	2,964	3,520	3,742	72,390	77,325	79,300	84,970	89,326	23%

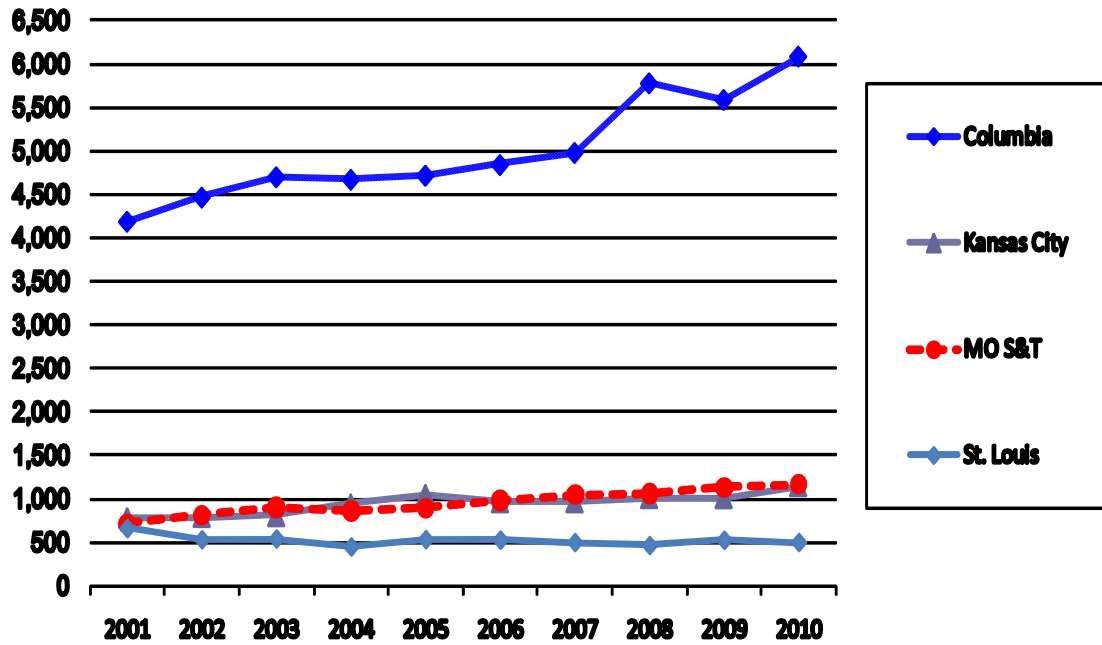
Source: EMSAS Fall Enrollment file

Table 2.4 Headcounts, Full-time Equivalence, and Student Credit Hours by Location, Fall 2006 to Fall 2010

	St. Louis															
	<u>On-Campus</u>					<u>Off-Campus</u>										
	FS06	FS07	FS08	FS09	FS10	FS06	FS07	FS08	FS09	FS10	FS06	FS07	FS08	FS09	FS10	5-yr. Change
Headcount by Student Level																
Undergraduate																
Fresh & Soph DS	2,196	2,133	2,452	2,347	2,262	5	3	6	8	3	2,201	2,136	2,458	2,355	2,265	3%
Junior & Senior DS	6,629	6,757	6,140	6,494	6,716	42	53	80	80	91	6,671	6,810	6,220	6,574	6,807	2%
Nondegree	<u>257</u>	<u>267</u>	<u>301</u>	<u>310</u>	<u>349</u>	<u>3,330</u>	<u>3,219</u>	<u>3,379</u>	<u>3,727</u>	<u>3,750</u>	<u>3,587</u>	<u>3,486</u>	<u>3,680</u>	<u>4,037</u>	<u>4,099</u>	14%
Total Undergraduate	9,082	9,157	8,893	9,151	9,327	3,377	3,275	3,465	3,815	3,844	12,459	12,432	12,358	12,966	13,171	6%
First Professional																
Optometry (OD)	<u>173</u>	<u>171</u>	<u>178</u>	<u>179</u>	<u>171</u>						<u>173</u>	<u>171</u>	<u>178</u>	<u>179</u>	<u>171</u>	-1%
Total First Professional	173	171	178	179	171	0	0	0	0	0	173	171	178	179	171	-1%
Graduate																
Masters & Ed. Spec.	2,185	2,172	2,175	2,270	2,287	86	101	240	311	330	2,271	2,273	2,415	2,581	2,617	15%
Doctoral	497	518	506	537	563	18	10	13	16	10	515	528	519	553	573	11%
Nondegree	<u>90</u>	<u>113</u>	<u>150</u>	<u>167</u>	<u>96</u>	<u>20</u>	<u>10</u>	<u>121</u>	<u>88</u>	<u>72</u>	<u>110</u>	<u>123</u>	<u>271</u>	<u>255</u>	<u>168</u>	53%
Total Graduate	2,772	2,803	2,831	2,974	2,946	124	121	374	415	412	2,896	2,924	3,205	3,389	3,358	16%
Grand Total																
Headcount	12,027	12,131	11,902	12,304	12,444	3,501	3,396	3,839	4,230	4,256	15,528	15,527	15,741	16,534	16,700	8%
FTE Enrollments by Student Level																
Undergraduate	6,634.3	6,696.3	6,558.2	6,779.8	6,923.5	1,238.2	1,215.7	1,255.3	1,392.3	1,393.4	7,873	7,912	7,814	8,172	8,317	6%
First Professional	173.0	171.0	178.0	179.0	171.0	0.0	0.0	0.0	0.0	0.0	173	171	178	179	171	-1%
Graduate	<u>1,377.0</u>	<u>1,420.9</u>	<u>1,433.8</u>	<u>1,498.2</u>	<u>1,550.6</u>	<u>45.0</u>	<u>43.0</u>	<u>153.1</u>	<u>182.4</u>	<u>189.2</u>	<u>1,422</u>	<u>1,464</u>	<u>1,587</u>	<u>1,681</u>	<u>1,740</u>	22%
Total FTE	8,184.3	8,288.2	8,170.0	8,457.0	8,645.1	1,283.2	1,258.7	1,408.4	1,574.7	1,582.6	9,467.5	9,546.9	9,578.4	10,031.8	10,227.7	8%
SCH Produced by Student Level																
Undergraduate	99,515	100,444	98,373	101,697	103,853	18,573	18,235	18,830	20,885	20,901	118,088	118,679	117,203	122,582	124,754	6%
First Professional	3,429	3,506	3,566	3,671	3,555	0	0	0	0	0	3,429	3,506	3,566	3,671	3,555	4%
Graduate	<u>16,524</u>	<u>17,051</u>	<u>17,203</u>	<u>17,979</u>	<u>18,608</u>	<u>540</u>	<u>516</u>	<u>1,837</u>	<u>2,189</u>	<u>2,270</u>	<u>17,064</u>	<u>17,567</u>	<u>19,040</u>	<u>20,168</u>	<u>20,878</u>	22%
Total SCH	119,468	121,001	119,142	123,347	126,016	19,113	18,751	20,667	23,074	23,171	138,581	139,752	139,809	146,421	149,187	8%

Source: EMSAS Fall Enrollment file

Figure 3a. First-time College Freshmen History, 2001 to 2010

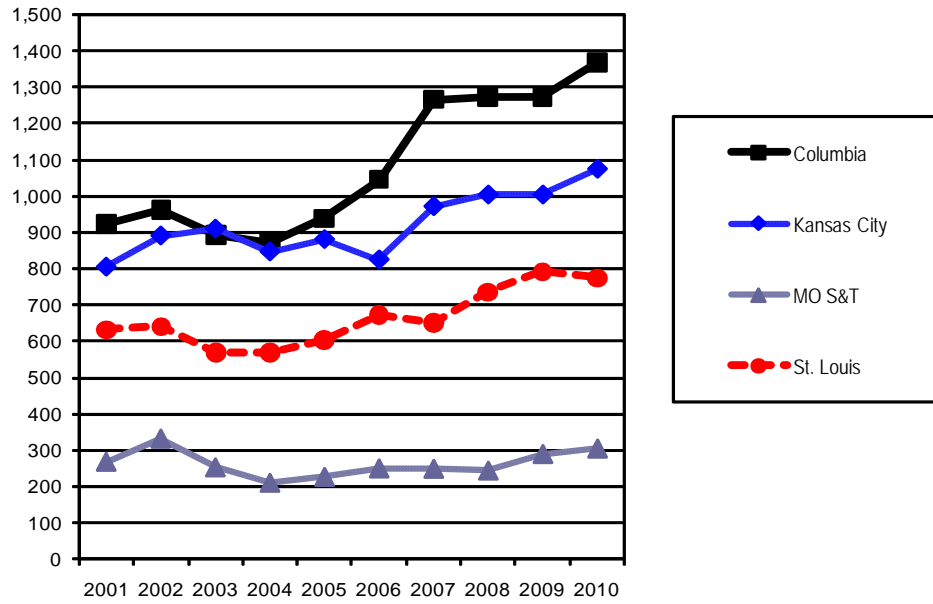


Source: EMSAS Fall Enrollment file
IR&PLCB 11/10

First-time College Freshmen History, 2001 to 2010

Campus	2001	2002	2003	2004	2005	2006	2007	2008	2009	2010
Columbia	4,191	4,468	4,702	4,673	4,720	4,842	4,981	5,780	5,589	6,087
Kansas City	778	790	799	939	1,048	959	959	1,008	1,007	1,147
MO S&T	715	815	897	856	892	977	1,050	1,055	1,132	1,170
St. Louis	663	533	542	451	536	530	502	468	527	502
Total	6,347	6,606	6,940	6,919	7,196	7,308	7,492	8,311	8,255	8,906

Figure 3b. New Graduate Student History by Campus, 2001 to 2010

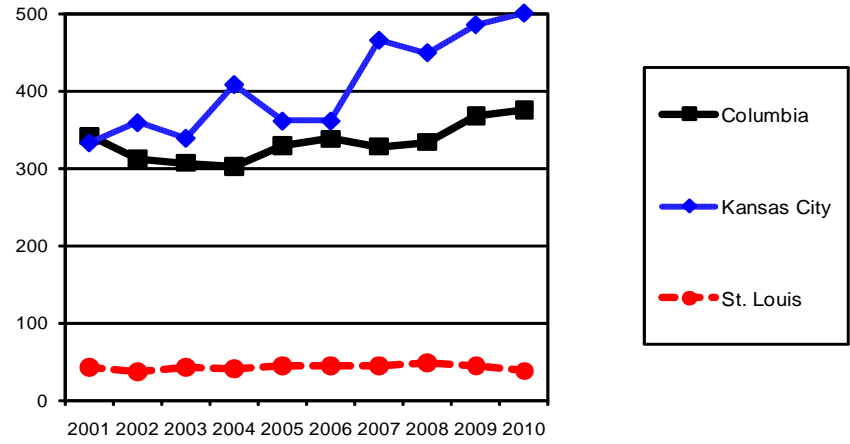


Source: EMSAS Fall Enrollment file
IR&P/LCB 11/10

New Graduate Student History by Campus, 2001 to 2010

Campus	2001	2002	2003	2004	2005	2006	2007	2008	2009	2010
Columbia	923	962	894	873	939	1,046	1,266	1,274	1,272	1,367
Kansas City	806	892	911	848	882	826	973	1,005	1,005	1,076
MO S&T	269	332	254	212	228	251	250	245	290	305
St. Louis	632	641	568	570	603	674	652	736	792	775
Total	2,630	2,827	2,627	2,503	2,652	2,797	3,141	3,260	3,359	3,523

Figure 3c. New First Professional Student History by Campus, 2001 to 2010



Source: EMSAS Fall Enrollment file
IR&P/LCB 11/10

New First Professional Student History By Campus, 2001 to 2010

Campus	2001	2002	2003	2004	2005	2006	2007	2008	2009	2010
Columbia	342	312	307	302	329	338	328	334	368	376
Kansas City	333	359	339	408	361	361	465	449	485	500
St. Louis	43	37	43	41	44	45	45	48	44	38
Total	718	708	689	751	734	744	838	831	897	914

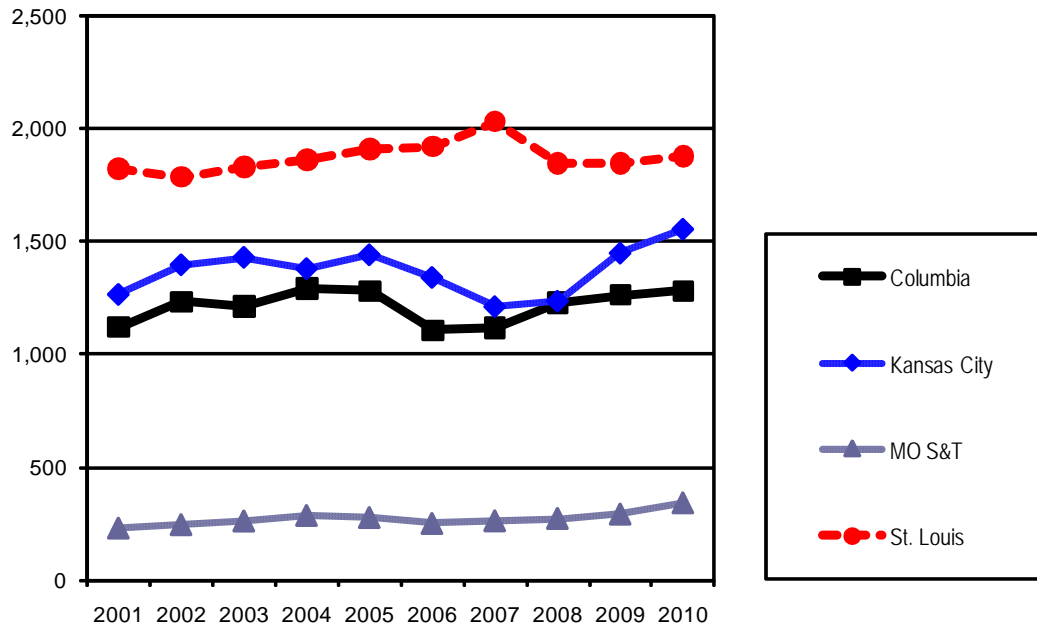
Table 3. On-Campus New Student Headcount, Fall 2006 - Fall 2010

		2006	2007	2008	2009	2010	5 yr. Change
Columbia							
Freshmen							
	Degree-Seeking	4,836	4,980	5,780	5,589	6,087	26%
	Non Degree-Seeking	6	1	0	0	0	-100%
Undergraduate Transfers							
	Degree-Seeking	1,030	986	1,077	1,108	1,159	13%
	Non Degree-Seeking	78	130	153	157	123	58%
Professional							
	Degree-Seeking	338	328	334	368	376	11%
Graduate							
	Degree-Seeking	940	1,142	1,167	1,169	1,248	33%
	Non Degree-Seeking	106	124	107	103	119	12%
Kansas City							
Freshmen							
	Degree-Seeking	955	959	1,008	1,004	1,145	20%
	Non Degree-Seeking	4	0	0	3	2	-50%
Undergraduate Transfers							
	Degree-Seeking	1,176	1,192	1,238	1,449	1,554	32%
	Non Degree-Seeking	167	22	0	1	2	-99%
Professional							
	Degree-Seeking	361	462	447	481	500	39%
	Non Degree-Seeking	0	3	2	4	0	
Graduate							
	Degree-Seeking	768	973	1,005	1,004	1,076	40%
	Non Degree-Seeking	58	0	0	1	0	-100%
Missouri S&T							
Freshmen							
	Degree-Seeking	962	1,041	1,045	1,108	1,149	19%
	Non Degree-Seeking	15	9	10	24	21	40%
Undergraduate Transfers							
	Degree-Seeking	248	264	272	292	341	38%
	Non Degree-Seeking	4	0	2	1	1	-75%
Graduate							
	Degree-Seeking	242	243	244	289	296	22%
	Non Degree-Seeking	9	7	1	1	9	0%
St Louis							
Freshmen							
	Degree-Seeking	525	498	468	525	497	-5%
	Non Degree-Seeking	5	4	11	2	5	0%
Undergraduate Transfers							
	Degree-Seeking	1,763	1,852	1,667	1,673	1,696	-4%
	Non Degree-Seeking	159	180	179	172	185	16%
Professional							
	Degree-Seeking	45	45	48	44	38	-16%
Graduate							
	Degree-Seeking	621	583	685	750	721	16%
	Non Degree-Seeking	53	69	51	42	54	2%

Source: EMSAS Fall Enrollment file

IR&P/LCB 11/10

Figure 4. First-time On-Campus Undergraduate Transfer Student History by Campus, 2001 to 2010



Source: EMSAS Fall Enrollment file
IR&P/LCB 11/10

First-time On-Campus Undergraduate Transfer Student History by Campus, 2000 to 2010

Campus	2001	2002	2003	2004	2005	2006	2007	2008	2009	2010
Columbia	1,122	1,234	1,215	1,295	1,281	1,108	1,116	1,230	1,265	1,282
Kansas City	1,268	1,399	1,432	1,382	1,443	1,343	1,214	1,238	1,450	1,556
MO S&T	232	247	263	287	278	252	264	274	293	342
St. Louis	1,823	1,787	1,829	1,863	1,912	1,922	2,032	1,846	1,845	1,881
Total	4,445	4,667	4,739	4,827	4,914	4,625	4,626	4,588	4,853	5,061

Table 4.0a Resident Headcount History by Student Level, Load, and Campus, Fall 2006 to Fall 2010

Level	2006	2007	2008	2009	2010	5 yr. Change
UNIVERSITY OF MISSOURI SYSTEM FULL-TIME RESIDENT HEADCOUNT						
Undergraduate						
Freshman & Soph DS	13,412	13,504	14,380	14,514	14,609	9%
Junior & Senior DS	16,335	16,378	16,556	17,441	18,223	12%
Nondegree	124	138	130	126	151	22%
Total System Full-time Resident Undergraduate	29,871	30,020	31,066	32,081	32,983	10%
First Professional						
Dentistry (DDS)	252	265	276	286	298	18%
Law (JD)	778	771	776	797	755	-3%
Medicine (MD)	611	641	652	649	633	4%
Optometry (OD)	83	86	89	86	74	-11%
Pharmacy (Dpharm)	225	252	278	320	327	45%
Vet. Med (DVM)	254	255	259	264	301	19%
Total System Full-time Resident 1st Professional	2,203	2,270	2,330	2,402	2,388	8%
Graduate						
Masters & Ed. Spec.	2,084	2,051	2,036	2,311	2,377	14%
Doctoral	516	489	501	544	996	93%
Nondegree	48	47	51	68	57	19%
Total System Full-time Resident Graduate	2,648	2,587	2,588	2,923	3,430	30%
Total System Full-time Resident Headcount	34,722	34,877	35,984	37,406	38,801	12%
UNIVERSITY OF MISSOURI SYSTEM PART-TIME RESIDENT HEADCOUNT						
Undergraduate						
Freshman & Soph DS	942	1,012	1,083	1,059	992	5%
Junior & Senior DS	4,326	4,307	4,142	4,266	4,518	4%
Nondegree	5,784	5,483	5,477	5,568	5,547	-4%
Total System Part-time Resident Undergraduate	11,052	10,802	10,702	10,893	11,057	0%
First Professional						
Law (JD)	35	40	33	26	35	0%
Medicine (MD)	1	0	0	0	0	
Vet. Med (DVM)	3	0	0	0	0	
Total System Part-time Resident 1st Professional	39	40	33	26	35	-10%
Graduate						
Masters & Ed. Spec.	3,624	3,790	3,953	4,164	4,222	17%
Doctoral	1,103	1,180	1,197	1,254	835	-24%
Nondegree	601	945	905	825	689	15%
Total System Part-time Resident Graduate	5,328	5,915	6,055	6,243	5,746	8%
Total System Part-time Resident Headcount	16,419	16,757	16,790	17,162	16,838	3%
UNIVERSITY OF MISSOURI SYSTEM TOTAL RESIDENT HEADCOUNT						
Undergraduate						
Freshman & Soph DS	14,354	14,516	15,463	15,573	15,601	9%
Junior & Senior DS	20,661	20,685	20,698	21,707	22,741	10%
Nondegree	5,908	5,621	5,607	5,694	5,698	-4%
Total System Resident Undergraduate	40,923	40,822	41,768	42,974	44,040	8%
First Professional						
Dentistry (DDS)	252	265	276	286	298	18%
Law (JD)	813	811	809	823	790	-3%
Medicine (MD)	612	641	652	649	633	3%
Optometry (OD)	83	86	89	86	74	-11%
Pharmacy (Dpharm)	225	252	278	320	327	45%
Vet. Med (DVM)	257	255	259	264	301	17%
Total System Resident 1st Professional	2,242	2,310	2,363	2,428	2,423	8%
Graduate						
Masters & Ed. Spec.	5,708	5,841	5,989	6,475	6,599	16%
Doctoral	1,619	1,669	1,698	1,798	1,831	13%
Nondegree	649	992	956	893	746	15%
Total System Resident Graduate	7,976	8,502	8,643	9,166	9,176	15%
Grand Total System Resident Headcount	51,141	51,634	52,774	54,568	55,639	9%

Table 4.0b Non-Resident Headcount History by Student Level, Load, and Campus, Fall 2006 to Fall 2010

Level	2006	2007	2008	2009	2010	5 yr. Change
UNIVERSITY OF MISSOURI SYSTEM FULL-TIME NON-RESIDENT HEADCOUNT						
Undergraduate						
Freshman & Soph DS	3,051	3,191	3,649	4,119	4,629	52%
Junior & Senior DS	2,786	2,817	2,954	3,128	3,469	25%
Nondegree	96	111	151	142	168	75%
Total System Full-time Non-Resident Undergraduate	5,933	6,119	6,754	7,389	8,266	39%
First Professional						
Dentistry (DDS)	141	136	123	115	107	-24%
Law (JD)	151	137	126	112	136	-10%
Medicine (MD)	126	118	115	120	147	17%
Optometry (OD)	90	85	89	93	97	8%
Pharmacy (Dpharm)	13	13	20	19	25	92%
Vet. Med (DVM)	14	23	27	57	65	364%
Total System Full-time Non-Resident 1st Professional	535	512	500	516	577	8%
Graduate						
Masters & Ed. Spec.	1,697	1,777	1,774	1,875	1,770	4%
Doctoral	1,019	982	1,108	1,208	1,597	57%
Nondegree	34	28	37	31	41	21%
Total System Full-time Non-Resident Graduate	2,750	2,787	2,919	3,114	3,408	24%
Total System Full-time Non-Resident Headcount	9,218	9,418	10,173	11,019	12,251	33%
UNIVERSITY OF MISSOURI SYSTEM PART-TIME NON-RESIDENT HEADCOUNT						
Undergraduate						
Freshman & Soph DS	180	221	195	187	234	30%
Junior & Senior DS	576	582	592	609	643	12%
Nondegree	229	120	201	193	175	-24%
Total System Part-time Non-Resident Undergraduate	985	923	988	989	1,052	7%
First Professional						
Law (JD)	7	8	10	8	6	-14%
Medicine (MD)	0	0	0	0	0	
Total System Part-time Non-Resident 1st Professional	7	8	10	8	6	-14%
Graduate						
Masters & Ed. Spec.	1,372	1,497	1,668	1,713	1,834	34%
Doctoral	850	864	840	884	600	-29%
Nondegree	210	196	266	203	214	2%
Total System Part-time Non-Resident Graduate	2,432	2,557	2,774	2,800	2,648	9%
Total System Part-time Non-Resident Headcount	3,424	3,488	3,772	3,797	3,706	8%
UNIVERSITY OF MISSOURI SYSTEM TOTAL NON-RESIDENT HEADCOUNT						
Undergraduate						
Freshman & Soph DS	3,231	3,412	3,844	4,306	4,863	51%
Junior & Senior DS	3,362	3,399	3,546	3,737	4,112	22%
Nondegree	325	231	352	335	343	6%
Total System Non-Resident Undergraduate	6,918	7,042	7,742	8,378	9,318	35%
First Professional						
Dentistry (DDS)	141	136	123	115	107	-24%
Law (JD)	158	145	136	120	142	-10%
Medicine (MD)	126	118	115	120	147	17%
Optometry (OD)	90	85	89	93	97	8%
Pharmacy (Dpharm)	13	13	20	19	25	92%
Vet. Med (DVM)	14	23	27	57	65	364%
Total System Non-Resident 1st Professional	542	520	510	524	583	8%
Graduate						
Masters & Ed. Spec.	3,069	3,274	3,442	3,588	3,604	17%
Doctoral	1,869	1,846	1,948	2,092	2,197	18%
Nondegree	244	224	303	234	255	5%
Total System Non-Resident Graduate	5,182	5,344	5,693	5,914	6,056	17%
Grand Total System Non-Resident Headcount	12,642	12,906	13,945	14,816	15,957	26%

Table 4.1a Resident Headcount History by Student Level, Load, and Campus, Fall 2006 to Fall 2010

Level	2006	2007	2008	2009	2010	5 yr. Change
UNIVERSITY OF MISSOURI-COLUMBIA FULL-TIME RESIDENT HEADCOUNT						
Undergraduate						
Freshman & Soph DS	8,463	8,438	9,079	9,099	9,137	8%
Junior & Senior DS	8,845	8,769	8,967	9,294	9,675	9%
Nondegree	1	9	2	2	1	0%
Total MU Full-time Resident Undergraduate	17,309	17,216	18,048	18,395	18,813	9%
First Professional						
Law (JD)	404	404	398	409	398	-1%
Medicine (MD)	364	370	375	375	372	2%
Vet. Med (DVM)	254	255	259	264	301	19%
Total MU Full-time Resident 1st Professional	1,022	1,029	1,032	1,048	1,071	5%
Graduate						
Masters & Ed. Spec.	1,112	1,074	1,054	1,191	1,157	4%
Doctoral	336	305	322	376	761	126%
Nondegree	38	28	33	29	26	-32%
Total MU Full-time Resident Graduate	1,486	1,407	1,409	1,596	1,944	31%
Total MU Full-time Resident Headcount	19,817	19,652	20,489	21,039	21,828	10%
UNIVERSITY OF MISSOURI-COLUMBIA PART-TIME RESIDENT HEADCOUNT						
Undergraduate						
Freshman & Soph DS	217	267	249	257	229	6%
Junior & Senior DS	698	746	698	797	843	21%
Nondegree	204	143	213	186	139	-32%
Total MU Part-time Resident Undergraduate	1,119	1,156	1,160	1,240	1,211	8%
First Professional						
Law (JD)	13	14	14	4	14	8%
Medicine (MD)	1	0	0	0	0	
Vet. Med (DVM)	3	0	0	0	0	
Total MU Part-time Resident 1st Professional	17	14	14	4	14	-18%
Graduate						
Masters & Ed. Spec.	808	935	1,012	1,059	1,100	36%
Doctoral	658	700	659	679	318	-52%
Nondegree	328	348	469	381	357	9%
Total MU Part-time Resident Graduate	1,794	1,983	2,140	2,119	1,775	-1%
Total MU Part-time Resident Headcount	2,930	3,153	3,314	3,363	3,000	2%
UNIVERSITY OF MISSOURI-COLUMBIA TOTAL RESIDENT HEADCOUNT						
Undergraduate						
Freshman & Soph DS	8,680	8,705	9,328	9,356	9,366	8%
Junior & Senior DS	9,543	9,515	9,665	10,091	10,518	10%
Nondegree	205	152	215	188	140	-32%
Total MU Resident Undergraduate	18,428	18,372	19,208	19,635	20,024	9%
First Professional						
Law (JD)	417	418	412	413	412	-1%
Medicine (MD)	365	370	375	375	372	2%
Vet. Med (DVM)	257	255	259	264	301	17%
Total MU Resident 1st Professional	1,039	1,043	1,046	1,052	1,085	4%
Graduate						
Masters & Ed. Spec.	1,920	2,009	2,066	2,250	2,257	18%
Doctoral	994	1,005	981	1,055	1,079	9%
Nondegree	366	376	502	410	383	5%
Total MU Resident Graduate	3,280	3,390	3,549	3,715	3,719	13%
Grand Total MU Resident Headcount	22,747	22,805	23,803	24,402	24,828	9%

Table 4.1b Non-Resident Headcount History by Student Level, Load, and Campus, Fall 2006 to Fall 2010

Level	2006	2007	2008	2009	2010	5 yr. Change
UNIVERSITY OF MISSOURI-COLUMBIA FULL-TIME NON-RESIDENT HEADCOUNT						
Undergraduate						
Freshman & Soph DS	1,790	1,864	2,265	2,658	3,137	75%
Junior & Senior DS	1,094	1,169	1,249	1,274	1,420	30%
Nondegree	32	35	49	44	53	66%
Total MU Full-time Non-Resident Undergraduate	2,916	3,068	3,563	3,976	4,610	58%
First Professional						
Law (JD)	38	38	40	31	30	-21%
Medicine (MD)	10	5	12	10	16	60%
Vet. Med (DVM)	14	23	27	57	65	364%
Total MU Full-time Non-Resident 1st Professional	62	66	79	98	111	79%
Graduate						
Masters & Ed. Spec.	646	664	678	714	674	4%
Doctoral	643	626	671	709	999	55%
Nondegree	26	21	25	17	20	-23%
Total MU Full-time Non-Resident Graduate	1,315	1,311	1,374	1,440	1,693	29%
Total MU Full-time Non-Resident Headcount	4,293	4,445	5,016	5,514	6,414	49%
UNIVERSITY OF MISSOURI-COLUMBIA PART-TIME NON-RESIDENT HEADCOUNT						
Undergraduate						
Freshman & Soph DS	41	54	60	80	66	61%
Junior & Senior DS	56	79	81	69	95	70%
Nondegree	43	13	68	39	39	-9%
Total MU Part-time Non-Resident Undergraduate	140	146	209	188	200	43%
First Professional						
Law (JD)	1	2	1	0	1	
Medicine (MD)	0	0	0	0	0	
Vet. Med (DVM)	0	0	0	0	0	
Total MU Part-time Non-Resident 1st Professional	1	2	1	0	1	
Graduate						
Masters & Ed. Spec.	394	433	479	517	546	39%
Doctoral	464	476	480	493	247	-47%
Nondegree	145	98	142	123	105	-28%
Total MU Part-time Non-Resident Graduate	1,003	1,007	1,101	1,133	898	-10%
Total MU Part-time Non-Resident Headcount	1,144	1,155	1,311	1,321	1,099	-4%
UNIVERSITY OF MISSOURI-COLUMBIA TOTAL NON-RESIDENT HEADCOUNT						
Undergraduate						
Freshman & Soph DS	1,831	1,918	2,325	2,738	3,203	75%
Junior & Senior DS	1,150	1,248	1,330	1,343	1,515	32%
Nondegree	75	48	117	83	92	23%
Total MU Non-Resident Undergraduate	3,056	3,214	3,772	4,164	4,810	57%
First Professional						
Law (JD)	39	40	41	31	31	-21%
Medicine (MD)	10	5	12	10	16	60%
Vet. Med (DVM)	14	23	27	57	65	364%
Total MU Non-Resident 1st Professional	63	68	80	98	112	78%
Graduate						
Masters & Ed. Spec.	1,040	1,097	1,157	1,231	1,220	17%
Doctoral	1,107	1,102	1,151	1,202	1,246	13%
Nondegree	171	119	167	140	125	-27%
Total MU Non-Resident Graduate	2,318	2,318	2,475	2,573	2,591	12%
Grand Total MU Non-Resident Headcount	5,437	5,600	6,327	6,835	7,513	38%

Table 4.2a Resident Headcount History by Student Level, Load, and Campus, Fall 2006 to Fall 2010

Level	2006	2007	2008	2009	2010	5 yr. Change
UNIVERSITY OF MISSOURI-KANSAS CITY FULL-TIME RESIDENT HEADCOUNT						
Undergraduate						
Freshman & Soph DS	1,948	1,962	1,987	2,067	2,125	9%
Junior & Senior DS	2,144	2,035	2,226	2,421	2,668	24%
Nondegree	10	27	17	6	11	10%
Total UMKC Full-time Resident Undergraduate	4,102	4,024	4,230	4,494	4,804	17%
First Professional						
Dentistry (DDS)	252	265	276	286	298	18%
Law (JD)	374	367	378	388	357	-5%
Medicine (MD)	247	271	277	274	261	6%
Pharmacy (Dpharm)	225	252	278	320	327	45%
Total UMKC Full-time Resident 1st Professional	1,098	1,155	1,209	1,268	1,243	13%
Graduate						
Masters & Ed. Spec.	479	439	435	492	534	11%
Doctoral	49	41	45	34	51	4%
Nondegree	5	3	2	18	1	-80%
Total UMKC Full-time Resident Graduate	533	483	482	544	586	10%
Total UMKC Full-time Resident Headcount	5,733	5,662	5,921	6,306	6,633	16%
UNIVERSITY OF MISSOURI-KANSAS CITY PART-TIME RESIDENT HEADCOUNT						
Undergraduate						
Freshman & Soph DS	236	304	278	270	269	14%
Junior & Senior DS	791	768	857	817	808	2%
Nondegree	2,142	1,997	1,759	1,499	1,483	-31%
Total UMKC Part-time Resident Undergraduate	3,169	3,069	2,894	2,586	2,560	-19%
First Professional						
Law (JD)	22	26	19	22	21	-5%
Total UMKC Part-time Resident 1st Professional	22	26	19	22	21	-5%
Graduate						
Masters & Ed. Spec.	1,019	1,090	1,073	1,110	1,124	10%
Doctoral	152	168	204	216	192	26%
Nondegree	174	497	226	221	152	-13%
Total UMKC Part-time Resident Graduate	1,345	1,755	1,503	1,547	1,468	9%
Total UMKC Part-time Resident Headcount	4,536	4,850	4,416	4,155	4,049	-11%
UNIVERSITY OF MISSOURI-KANSAS CITY TOTAL RESIDENT HEADCOUNT						
Undergraduate						
Freshman & Soph DS	2,184	2,266	2,265	2,337	2,394	10%
Junior & Senior DS	2,935	2,803	3,083	3,238	3,476	18%
Nondegree	2,152	2,024	1,776	1,505	1,494	-31%
Total UMKC Resident Undergraduate	7,271	7,093	7,124	7,080	7,364	1%
First Professional						
Dentistry (DDS)	252	265	276	286	298	18%
Law (JD)	396	393	397	410	378	-5%
Medicine (MD)	247	271	277	274	261	6%
Pharmacy (Dpharm)	225	252	278	320	327	45%
Total UMKC Resident 1st Professional	1,120	1,181	1,228	1,290	1,264	13%
Graduate						
Masters & Ed. Spec.	1,498	1,529	1,508	1,602	1,658	11%
Doctoral	201	209	249	250	243	21%
Nondegree	179	500	228	239	153	-15%
Total UMKC Resident Graduate	1,878	2,238	1,985	2,091	2,054	9%
Grand Total UMKC Resident Headcount	10,269	10,512	10,337	10,461	10,682	4%

Table 4.2b Non-Resident Headcount History by Student Level, Load, and Campus, Fall 2006 to Fall 2010

Level	2006	2007	2008	2009	2010	5 yr. Change
UNIVERSITY OF MISSOURI-KANSAS CITY FULL-TIME NON-RESIDENT HEADCOUNT						
Undergraduate						
Freshman & Soph DS	627	650	658	712	753	20%
Junior & Senior DS	941	839	933	1,012	1,117	19%
Nondegree	17	24	41	46	70	312%
Total UMKC Full-time Non-Resident Undergraduate	1,585	1,513	1,632	1,770	1,940	22%
First Professional						
Dentistry (DDS)	141	136	123	115	107	-24%
Law (JD)	113	99	86	81	106	-6%
Medicine (MD)	116	113	103	110	131	13%
Pharmacy (Dpharm)	13	13	20	19	25	92%
Total UMKC Full-time Non-Resident 1st Professional	383	361	332	325	369	-4%
Graduate						
Masters & Ed. Spec.	512	549	580	556	520	2%
Doctoral	100	105	152	150	132	32%
Nondegree	5	1	2	6	2	
Total UMKC Full-time Non-Resident Graduate	617	655	734	712	654	6%
Total UMKC Full-time Non-Resident Headcount	2,585	2,529	2,698	2,807	2,963	15%
UNIVERSITY OF MISSOURI-KANSAS CITY PART-TIME NON-RESIDENT HEADCOUNT						
Undergraduate						
Freshman & Soph DS	69	126	93	77	94	36%
Junior & Senior DS	311	291	318	345	352	13%
Nondegree	147	71	94	109	100	-32%
Total UMKC Part-time Non-Resident Undergraduate	527	488	505	531	546	4%
First Professional						
Law (JD)	6	6	9	8	5	-17%
Total UMKC Part-time Non-Resident 1st Professional	6	6	9	8	5	-17%
Graduate						
Masters & Ed. Spec.	562	599	635	675	715	27%
Doctoral	221	222	230	256	289	31%
Nondegree	43	86	67	61	59	37%
Total UMKC Part-time Non-Resident Graduate	826	907	932	992	1,063	29%
Total UMKC Part-time Non-Resident Headcount	1,359	1,401	1,446	1,531	1,614	19%
UNIVERSITY OF MISSOURI-KANSAS CITY TOTAL NON-RESIDENT HEADCOUNT						
Undergraduate						
Freshman & Soph DS	696	776	751	789	847	22%
Junior & Senior DS	1,252	1,130	1,251	1,357	1,469	17%
Nondegree	164	95	135	155	170	4%
Total UMKC Non-Resident Undergraduate	2,112	2,001	2,137	2,301	2,486	18%
First Professional						
Dentistry (DDS)	141	136	123	115	107	-24%
Law (JD)	119	105	95	89	111	-7%
Medicine (MD)	116	113	103	110	131	13%
Pharmacy (Dpharm)	13	13	20	19	25	92%
Total UMKC Non-Resident 1st Professional	389	367	341	333	374	-4%
Graduate						
Masters & Ed. Spec.	1,074	1,148	1,215	1,231	1,235	15%
Doctoral	321	327	382	406	421	31%
Nondegree	48	87	69	67	61	27%
Total UMKC Non-Resident Graduate	1,443	1,562	1,666	1,704	1,717	19%
Grand Total UMKC Non-Resident Headcount	3,944	3,930	4,144	4,338	4,577	16%

Table 4.3a Resident Headcount History by Student Level, Load, and Campus, Fall 2006 to Fall 2010

Level	2006	2007	2008	2009	2010	5 yr. Change
MISSOURI S&T FULL-TIME RESIDENT HEADCOUNT						
Undergraduate						
Freshman & Soph DS	1,497	1,607	1,650	1,760	1,811	21%
Junior & Senior DS	1,825	1,923	2,012	2,114	2,178	19%
Nondegree	6	1	4	1	0	-100%
Total MO S&T Full-time Resident Undergraduate	3,328	3,531	3,666	3,875	3,989	20%
Graduate						
Masters & Ed. Spec.	132	137	118	158	207	57%
Doctoral	66	84	75	75	64	-3%
Nondegree	1	0	0	0	0	
Total MO S&T Full-time Resident Graduate	199	221	193	233	271	36%
Total Missouri S&T Full-time Resident Headcount	3,527	3,752	3,859	4,108	4,260	21%
MISSOURI S&T PART-TIME RESIDENT HEADCOUNT						
Undergraduate						
Freshman & Soph DS	52	62	57	70	65	25%
Junior & Senior DS	244	223	229	230	299	23%
Nondegree	41	38	22	38	34	-17%
Total MO S&T Part-time Resident Undergraduate	337	323	308	338	398	18%
Graduate						
Masters & Ed. Spec.	219	243	261	222	232	6%
Doctoral	33	30	43	38	47	42%
Nondegree	6	7	15	12	8	33%
Total MO S&T Part-time Resident Graduate	258	280	319	272	287	11%
Total Missouri S&T Part-time Resident Headcount	595	603	627	610	685	15%
MISSOURI S&T TOTAL RESIDENT HEADCOUNT						
Undergraduate						
Freshman & Soph DS	1,549	1,669	1,707	1,830	1,876	21%
Junior & Senior DS	2,069	2,146	2,241	2,344	2,477	20%
Nondegree	47	39	26	39	34	-28%
Total MO S&T Resident Undergraduate	3,665	3,854	3,974	4,213	4,387	20%
Graduate						
Masters & Ed. Spec.	351	380	379	380	439	25%
Doctoral	99	114	118	113	111	12%
Nondegree	7	7	15	12	8	14%
Total MO S&T Resident Graduate	457	501	512	505	558	22%
Grand Total Missouri S&T Resident Headcount	4,122	4,355	4,486	4,718	4,945	20%

Table 4.3b Non-Resident Headcount History by Student Level, Load, and Campus, Fall 2006 to Fall 2010

Level	2006	2007	2008	2009	2010	5 yr. Change
MISSOURI S&T FULL-TIME NON-RESIDENT HEADCOUNT						
Undergraduate						
Freshman & Soph DS	406	446	459	463	465	15%
Junior & Senior DS	364	397	419	459	536	47%
Nondegree	0	1	4	10	5	
Total MO S&T Full-time Non-Resident Undergraduate	770	844	882	932	1,006	31%
Graduate						
Masters & Ed. Spec.	336	362	352	438	411	22%
Doctoral	211	185	212	281	320	52%
Nondegree	1	0	1	0	7	600%
Total MO S&T Full-time Non-Resident Graduate	548	547	565	719	738	35%
Total Missouri S&T Full-time Non-Resident Headcount	1,318	1,391	1,447	1,651	1,744	32%
MISSOURI S&T PART-TIME NON-RESIDENT HEADCOUNT						
Undergraduate						
Freshman & Soph DS	38	12	14	11	48	26%
Junior & Senior DS	39	35	35	38	55	41%
Nondegree	3	7	6	12	7	133%
Total MO S&T Part-time Non-Resident Undergraduate	80	54	55	61	110	38%
Graduate						
Masters & Ed. Spec.	287	317	339	350	366	28%
Doctoral	40	45	34	30	35	-13%
Nondegree	11	4	6	4	5	-55%
Total MO S&T Part-time Non-Resident Graduate	338	366	379	384	406	20%
Total Missouri S&T Part-time Non-Resident Headcount	418	420	434	445	516	23%
MISSOURI S&T TOTAL NON-RESIDENT HEADCOUNT						
Undergraduate						
Freshman & Soph DS	444	458	473	474	513	16%
Junior & Senior DS	403	432	454	497	591	47%
Nondegree	3	8	10	22	12	299%
Total MO S&T Non-Resident Undergraduate	850	898	937	993	1,116	31%
Graduate						
Masters & Ed. Spec.	623	679	691	788	777	25%
Doctoral	251	230	246	311	355	41%
Nondegree	12	4	7	4	12	0%
Total MO S&T Non-Resident Graduate	886	913	944	1,103	1,144	29%
Grand Total Missouri S&T Non-Resident Headcount	1,736	1,811	1,881	2,096	2,260	30%

Table 4.4a Resident Headcount History by Student Level, Load, and Campus, Fall 2006 to Fall 2010

Level	2006	2007	2008	2009	2010	5 yr. Change
UNIVERSITY OF MISSOURI-ST. LOUIS FULL-TIME RESIDENT HEADCOUNT						
Undergraduate						
Freshman & Soph DS	1,504	1,497	1,664	1,588	1,536	2%
Junior & Senior DS	3,521	3,651	3,351	3,612	3,702	5%
Nondegree	107	101	107	117	139	30%
Total UMSL Full-time Resident Undergraduate	5,132	5,249	5,122	5,317	5,377	5%
First Professional						
Optometry (OD)	83	86	89	86	74	-11%
Total UMSL Full-time Resident 1st Professional	83	86	89	86	74	-11%
Graduate						
Masters & Ed. Spec.	361	401	429	470	479	33%
Doctoral	65	59	59	59	120	85%
Nondegree	4	16	16	21	30	650%
Total UMSL Full-time Resident Graduate	430	476	504	550	629	46%
Total UMSL Full-time Resident Headcount	5,645	5,811	5,715	5,953	6,080	8%
UNIVERSITY OF MISSOURI-ST. LOUIS PART-TIME RESIDENT HEADCOUNT						
Undergraduate						
Freshman & Soph DS	437	379	499	462	429	-2%
Junior & Senior DS	2,593	2,570	2,358	2,422	2,568	-1%
Nondegree	3,397	3,305	3,483	3,845	3,891	15%
Total UMSL Part-time Resident Undergraduate	6,427	6,254	6,340	6,729	6,888	7%
First Professional						
Optometry (OD)	0	0	0	0	0	
Total UMSL Part-time Resident 1st Professional	0	0	0	0	0	
Graduate						
Masters & Ed. Spec.	1,578	1,522	1,607	1,773	1,766	12%
Doctoral	260	282	291	321	278	7%
Nondegree	93	93	195	211	172	85%
Total UMSL Part-time Resident Graduate	1,931	1,897	2,093	2,305	2,216	15%
Total UMSL Part-time Resident Headcount	8,358	8,151	8,433	9,034	9,104	9%
UNIVERSITY OF MISSOURI-ST. LOUIS TOTAL RESIDENT HEADCOUNT						
Undergraduate						
Freshman & Soph DS	1,941	1,876	2,163	2,050	1,965	1%
Junior & Senior DS	6,114	6,221	5,709	6,034	6,270	3%
Nondegree	3,504	3,406	3,590	3,962	4,030	15%
Total UMSL Resident Undergraduate	11,559	11,503	11,462	12,046	12,265	6%
First Professional						
Optometry (OD)	83	86	89	86	74	-11%
Total UMSL Resident 1st Professional	83	86	89	86	74	-11%
Graduate						
Masters & Ed. Spec.	1,939	1,923	2,036	2,243	2,245	16%
Doctoral	325	341	350	380	398	22%
Nondegree	97	109	211	232	202	108%
Total UMSL Resident Graduate	2,361	2,373	2,597	2,855	2,845	20%
Grand Total UMSL Resident Headcount	14,003	13,962	14,148	14,987	15,184	8%

Table 4.4b Non-Resident Headcount History by Student Level, Load, and Campus, Fall 2006 to Fall 2010

Level	2006	2007	2008	2009	2010	5 yr. Change
UNIVERSITY OF MISSOURI-ST. LOUIS FULL-TIME NON-RESIDENT HEADCOUNT						
Undergraduate						
Freshman & Soph DS	228	231	267	286	274	20%
Junior & Senior DS	387	412	353	383	396	2%
Nondegree	47	51	57	42	40	-15%
Total UMSL Full-time Non-Resident Undergraduate	662	694	677	711	710	7%
First Professional						
Optometry (OD)	90	85	89	93	97	8%
Total UMSL Full-time Non-Resident 1st Professional	90	85	89	93	97	8%
Graduate						
Masters & Ed. Spec.	203	202	164	167	165	-19%
Doctoral	65	66	73	68	146	125%
Nondegree	2	6	9	8	12	500%
Total UMSL Full-time Non-Resident Graduate	270	274	246	243	323	20%
Total UMSL Full-time Non-Resident Headcount	1,022	1,053	1,012	1,047	1,130	11%
UNIVERSITY OF MISSOURI-ST. LOUIS PART-TIME NON-RESIDENT HEADCOUNT						
Undergraduate						
Freshman & Soph DS	32	29	28	19	26	-19%
Junior & Senior DS	170	177	158	157	141	-17%
Nondegree	36	29	33	33	29	-19%
Total UMSL Part-time Non-Resident Undergraduate	238	235	219	209	196	-18%
First Professional						
Optometry (OD)	0	0	0	0	0	
Total UMSL Part-time Non-Resident 1st Professional	0	0	0	0	0	
Graduate						
Masters & Ed. Spec.	129	148	215	171	207	60%
Doctoral	125	121	96	105	29	-77%
Nondegree	11	8	51	15	45	309%
Total UMSL Part-time Non-Resident Graduate	265	277	362	291	281	6%
Total UMSL Part-time Non-Resident Headcount	503	512	581	500	477	-5%
UNIVERSITY OF MISSOURI-ST. LOUIS TOTAL NON-RESIDENT HEADCOUNT						
Undergraduate						
Freshman & Soph DS	260	260	295	305	300	15%
Junior & Senior DS	557	589	511	540	537	-4%
Nondegree	83	80	90	75	69	-17%
Total UMSL Non-Resident Undergraduate	900	929	896	920	906	1%
First Professional						
Optometry (OD)	90	85	89	93	97	8%
Total UMSL Non-Resident 1st Professional	90	85	89	93	97	8%
Graduate						
Masters & Ed. Spec.	332	350	379	338	372	12%
Doctoral	190	187	169	173	175	-8%
Nondegree	13	14	60	23	57	338%
Total UMSL Non-Resident Graduate	535	551	608	534	604	13%
Grand Total UMSL Non-Resident Headcount	1,525	1,565	1,593	1,547	1,607	5%

Table 5. Headcount Students by Gender and Ethnicity, Fall 2010

Data - Classification	<u>MU</u>		<u>UMKC</u>		<u>MO S&T</u>		<u>UMSL</u>		<u>TOTAL</u>	
	HC	%	HC	%	HC	%	HC	%	HC	%
A. Gender										
Men										
First-time DS Freshmen	2,874	47%	450	39%	895	78%	204	41%	4,423	50%
Other Undergraduate	9,061	48%	3,645	42%	3,353	77%	5,159	41%	21,218	48%
First Professional	560	47%	844	52%	0	-	70	41%	1,474	49%
Graduate	<u>2,622</u>	42%	<u>1,608</u>	43%	<u>1,348</u>	79%	<u>1,152</u>	33%	<u>6,730</u>	44%
Total	15,117	47%	6,547	43%	5,596	78%	6,585	39%	33,845	47%
Women										
First-time DS Freshmen	3,215	53%	695	61%	254	22%	293	59%	4,457	50%
Other Undergraduate	9,684	52%	5,060	58%	1,001	23%	7,515	59%	23,260	52%
First Professional	637	53%	788	48%	0	-	101	59%	1,526	51%
Graduate	<u>3,688</u>	58%	<u>2,169</u>	57%	<u>354</u>	21%	<u>2,297</u>	67%	<u>8,508</u>	56%
Total	17,224	53%	8,712	57%	1,609	22%	10,206	61%	37,751	53%
Grand Total	32,341		15,259		7,205		16,791		71,596	

Table 5. Headcount Students by Gender and Ethnicity (continued)

Data - Classification	MU		UMKC		MO S&T		UMSL		TOTAL	
	HC	%	HC	%	HC	%	HC	%	HC	%
B. Ethnicity *										
Am Indian/Alaskan Native										
First-time DS Freshmen	17	0%	5	0%	5	0%	1	0%	28	0%
Other Undergraduate	93	1%	54	1%	26	1%	34	0%	207	0%
First Professional	10	1%	5	0%	0	-	1	1%	16	1%
Graduate	<u>22</u>	0%	<u>12</u>	0%	<u>5</u>	0%	<u>16</u>	1%	<u>55</u>	0%
Total	142	0%	76	1%	36	1%	52	0%	306	0%
Asian/Pacific Islander										
First-time DS Freshmen	129	2%	100	10%	22	2%	17	4%	268	3%
Other Undergraduate	461	3%	452	6%	97	2%	377	3%	1,387	3%
First Professional	49	4%	234	16%	0	-	17	11%	300	11%
Graduate	<u>117</u>	2%	<u>92</u>	3%	<u>49</u>	3%	<u>93</u>	3%	<u>351</u>	2%
Total	756	2%	878	6%	168	2%	504	3%	2,306	3%
African-American Non-Hispanic										
First-time DS Freshmen	532	9%	194	19%	48	4%	97	21%	871	10%
Other Undergraduate	1,273	7%	1,166	15%	217	5%	1,995	17%	4,651	11%
First Professional	40	4%	67	4%	0	-	8	5%	115	4%
Graduate	<u>221</u>	4%	<u>300</u>	9%	<u>50</u>	3%	<u>420</u>	14%	<u>991</u>	7%
Total	2,066	7%	1,727	13%	315	5%	2,520	16%	6,628	10%
Hispanic										
First-time DS Freshmen	210	4%	57	5%	36	3%	9	2%	312	4%
Other Undergraduate	426	2%	422	6%	87	2%	251	2%	1,186	3%
First Professional	30	3%	51	3%	0	-	3	2%	84	3%
Graduate	<u>122</u>	2%	<u>113</u>	3%	<u>40</u>	2%	<u>65</u>	2%	<u>340</u>	2%
Total	788	3%	643	5%	163	2%	328	2%	1,922	3%
White Non-Hispanic										
First-time DS Freshmen	4,965	84%	658	63%	974	89%	306	66%	6,903	81%
Other Undergraduate	15,418	85%	5,250	69%	3,454	84%	8,647	74%	32,769	79%
First Professional	997	88%	1,122	75%	0	-	118	79%	2,237	81%
Graduate	<u>4,352</u>	72%	<u>2,281</u>	67%	<u>794</u>	49%	<u>2,267</u>	73%	<u>9,694</u>	68%
Total	25,732	83%	9,311	68%	5,222	76%	11,338	74%	51,603	77%
Nonresident Alien										
First-time DS Freshmen	53	1%	34	3%	14	1%	31	7%	132	2%
Other Undergraduate	469	3%	306	4%	250	6%	303	3%	1,328	3%
First Professional	2	0%	14	1%	0	-	3	2%	19	1%
Graduate	<u>1,173</u>	20%	<u>625</u>	18%	<u>696</u>	43%	<u>231</u>	7%	<u>2,725</u>	19%
Total	1,697	5%	979	7%	960	14%	568	4%	4,204	6%
Grand Total	31,181		13,614		6,864		15,310		66,969	

* Note: Students not reporting ethnicity (Unknown) were removed from the distribution.

Unknown

First-time DS Freshmen	183	97	50	366
Other Undergraduate	605	1,055	223	2,950
First Professional	69	139	0	229
Graduate	<u>303</u>	<u>354</u>	<u>68</u>	<u>1,082</u>
Total	1,160	1,645	341	4,627

Source: EMSAS Fall Enrollment file

IR&P/LCB 11/10