

**ENROLLMENT SUMMARY REPORT
FALL 2009**

Dr. La Shonda Carter-Boone
Senior Institutional Research Analyst

Office of Institutional Research & Planning
714 Lewis Hall
University of Missouri System

December 2009

IR&P 2009, Report 6

<http://www.umsystem.edu/ums/departments/fa/planning/>

FALL 2009 ENROLLMENT SUMMARY

Executive Summary

This report summarizes the status and trends in fall enrollment at the University of Missouri's four campuses. The report includes information about enrollment, full-time equivalence, new students on campus, undergraduate transfer students, full/part-time status, gender and ethnicity information.

Please note that enrollment totals in this report follow federal and state guidelines, which recommend that students who are classified as "exclusive auditors" are not included in enrollment figures. Consequently, students who are classified as "exclusive auditors" are not included in the campus totals. (Exclusive auditors are defined as students who are enrolled exclusively in courses that are not taken for credit.)

Highlights of the report include:

- The University of Missouri System enrolled a record 69,384 students in Fall 2009, 2,665 more students than the record 66,719 students that enrolled in Fall 2008. Total enrollment at the University has increased by 24% over the past 10 years (Table 1).
- In Fall 2009, the University of Missouri enrolled 51,352 undergraduate students (74% of total headcount), 2,952 first professional students (4%), and 15,080 graduate students (22%) (Table 1).
- Over the past 10 years, undergraduate headcount has increased by 21%, first-professional headcount by 11% and graduate headcount by 40% (Table 1).
- Since 2005, total student credit hours and total full-time equivalence have both increased by 11% and 12%, respectively (Table 2.0).
- Over the past five years, total full-time resident headcount has increased 9% (table 4.0a) and total full-time non-resident headcount has increased 24% (Table 4.0b).
- Women comprised 53% of total enrollment in Fall 2009. UM-St. Louis had the largest percentage of women (62%) and MO S&T had the highest proportion of men (78%) (Table 5).
- Of all the students of known ethnicity, under-represented minorities (American Indian/Alaskan Native, African-American, and Hispanic) represented 14% of the University of Missouri System's total enrollment (Table 5).

Technical Notes

These tables provide counts of students enrolled in the fall of 2009 on-schedule credit courses at the four campuses of the University of Missouri. Five and ten-year trend data are included in the tables for comparison purposes. The data used in this report were generated from the EMSAS Fall Enrollment files, which are submitted to the Missouri Department of Higher Education (MDHE) each fall. Data included in EMSAS files were prepared in the admissions and registration offices at the respective campuses. The data are counts as of the census date at each campus, which is defined as the end of the fourth week of classes for the fall session. The source data are based on the reporting guidelines and definitions of the Missouri Department of Higher Education (MDHE) and the National Center for Educational Statistics (NCES).

Tables in the Table 2 series (2.0-2.4) include counts of on- and off-campus students. The columns titled "On-Campus", according to the MDHE guidelines, include students enrolled geographically on campus and students in the Graduate Engineering (Residence) Centers. All other students are counted in the columns headed "Off-Campus", which include students enrolled in extension courses and students that receive H.S. advanced credit from the Kansas City and St. Louis campuses. The tables of the Table 2 series also include full-time equivalence (FTE) counts.

Tables in the Table 4 series (4.0a-4.4b) include counts of resident and non-resident students by level and course load (full-time vs. part-time).

Definitions of FTE:

Undergraduate FTE = Total Student Credit Hours/15

Graduate FTE = Total Student Credit Hours/12

Dentistry FTE = Headcount

Law FTE = Total Student Credit Hours/15

UMC Medicine FTE = Headcount

UMKC Medicine FTE = Headcount

Optometry FTE = Headcount

Pharmacy FTE = Headcount

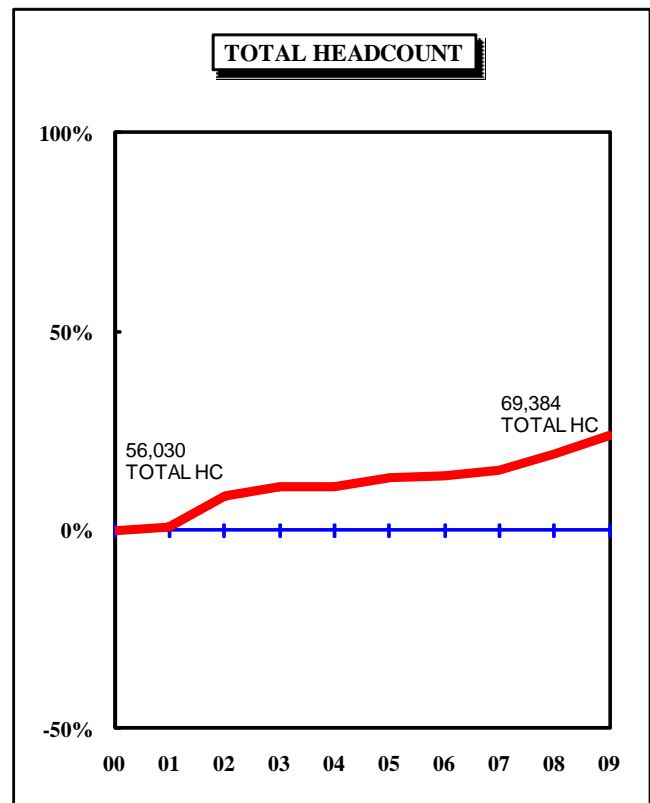
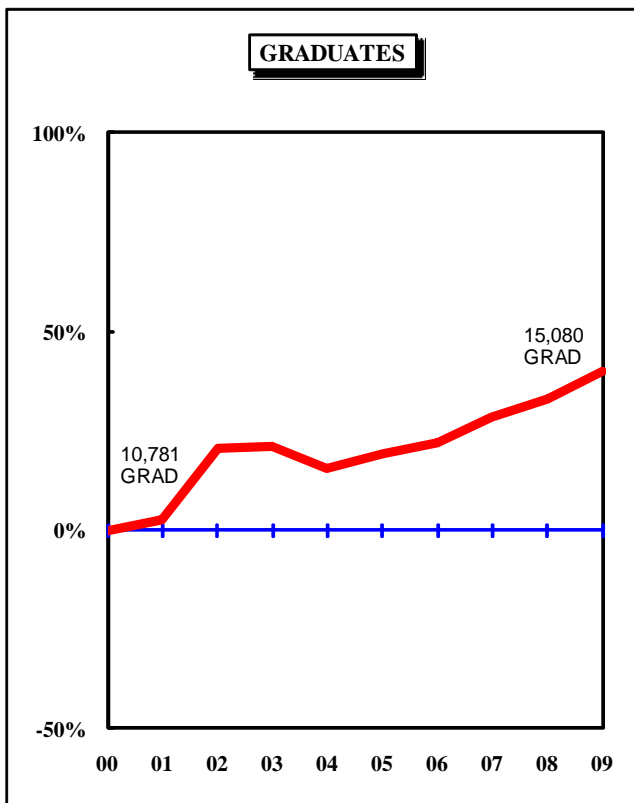
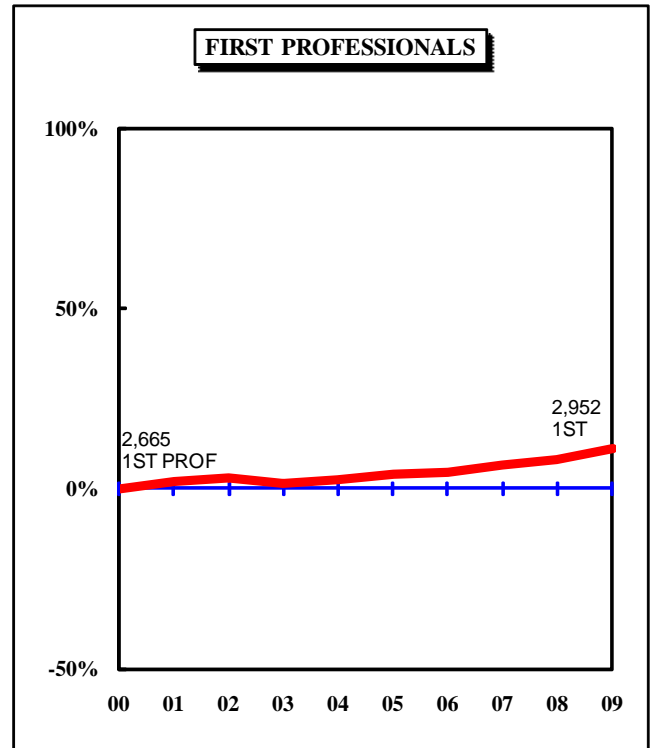
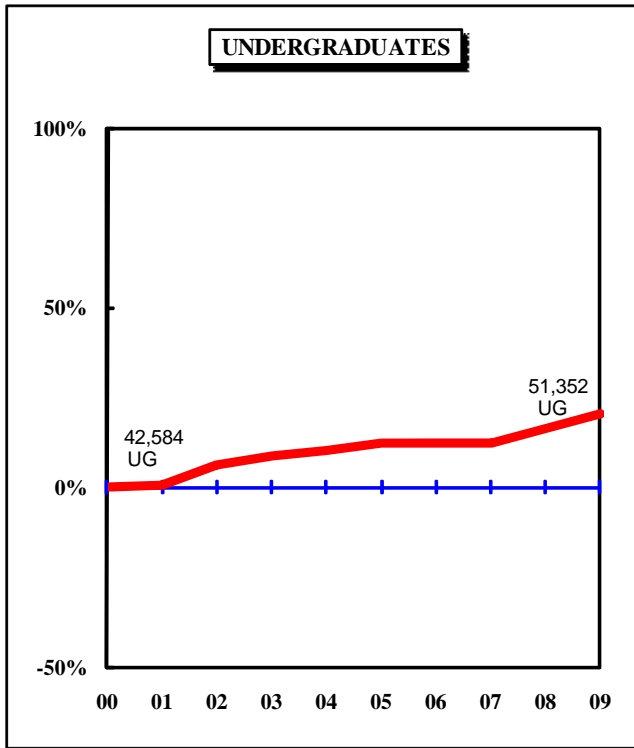
Vet Medicine FTE = Headcount

Caveats

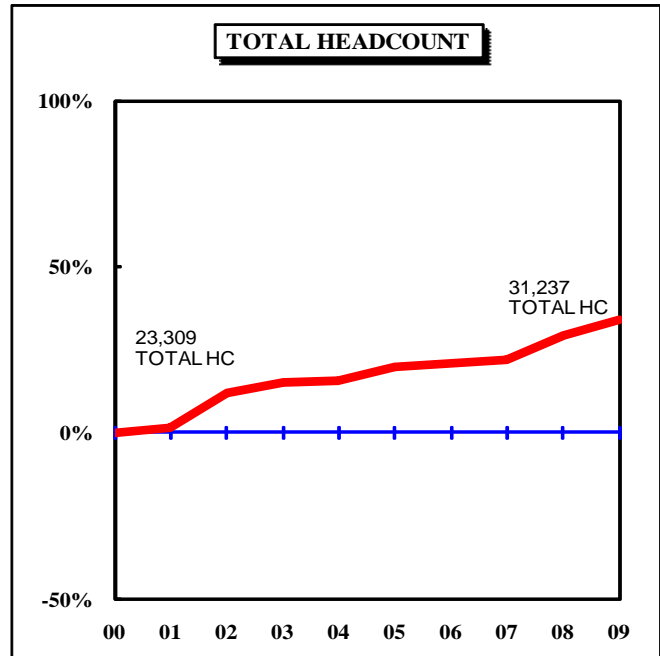
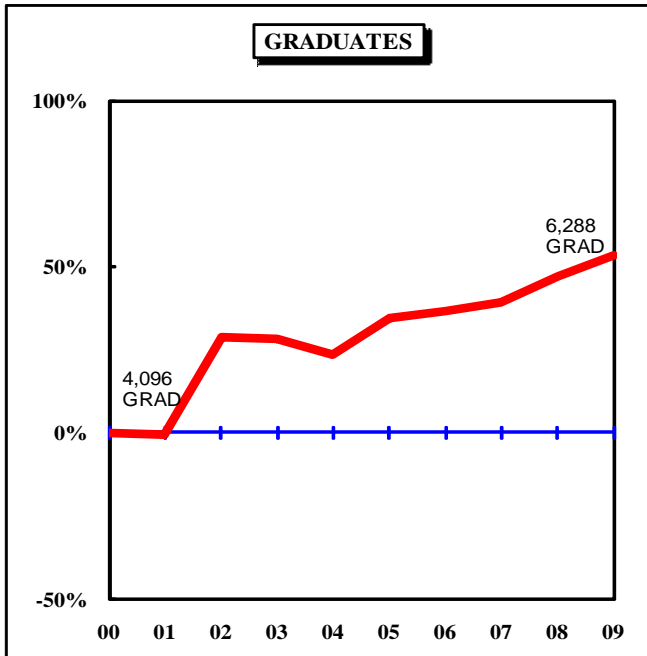
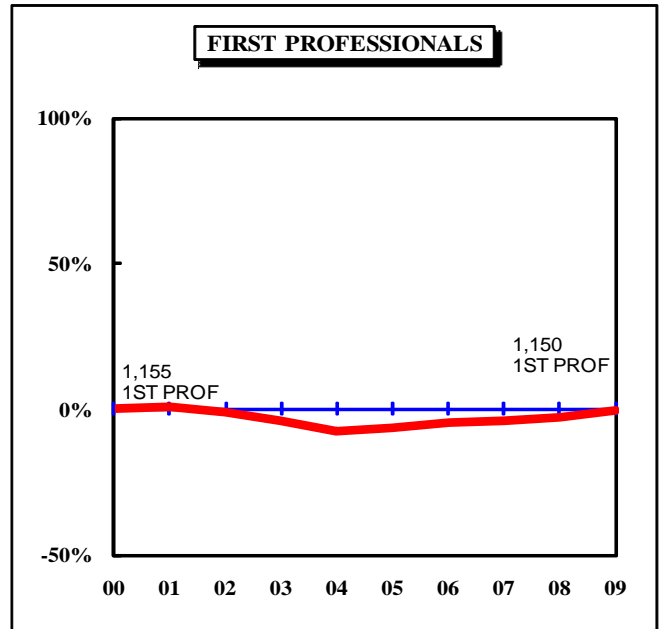
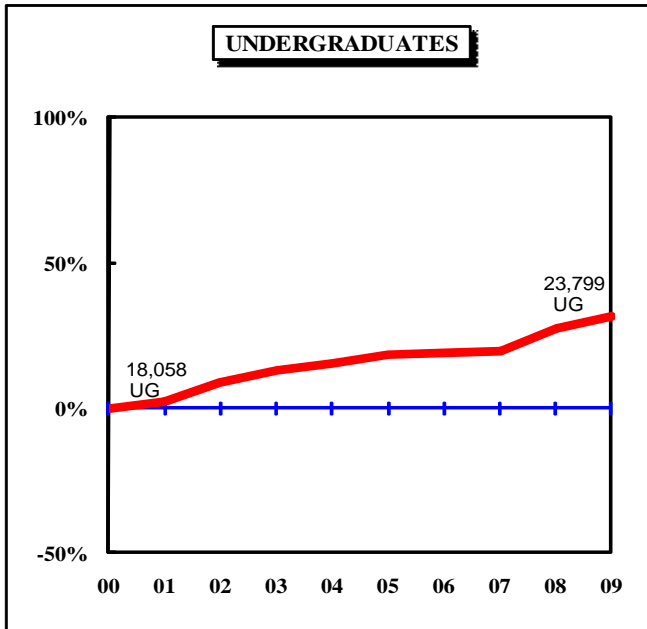
First- and second-year students in the Medicine MD program at UMKC are included in the undergraduate counts of the Table 2 and Table 4 series.

Enrollment counts for students in "Off-Schedule" courses, which include intersession courses, short courses, Video Credit courses, and other courses which begin and end on dates other than those for the regular academic semester, are accumulated during the term in which the courses began and are reported the semester following their end date.

**Figure 1.0: Rate of Change in Fall Headcount by Student Level and Campus,
Fall 2000 to Fall 2009**
UNIVERSITY OF MISSOURI SYSTEM



**Figure 1.1: Rate of Change in Fall Headcount by Student Level and Campus,
Fall 2000 to Fall 2009**
UNIVERSITY OF MISSOURI-COLUMBIA



**Figure 1.2: Rate of Change in Fall Headcount by Student Level and Campus,
Fall 2000 to Fall 2009**
UNIVERSITY OF MISSOURI-KANSAS CITY

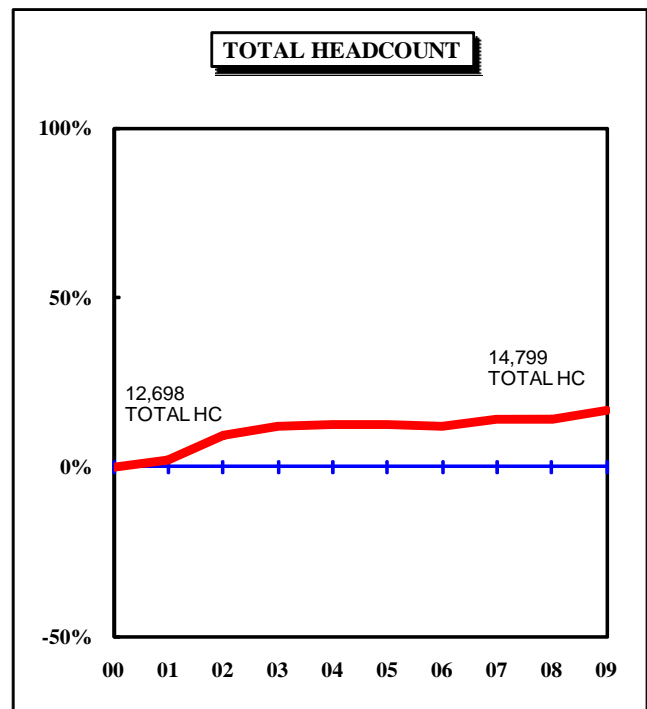
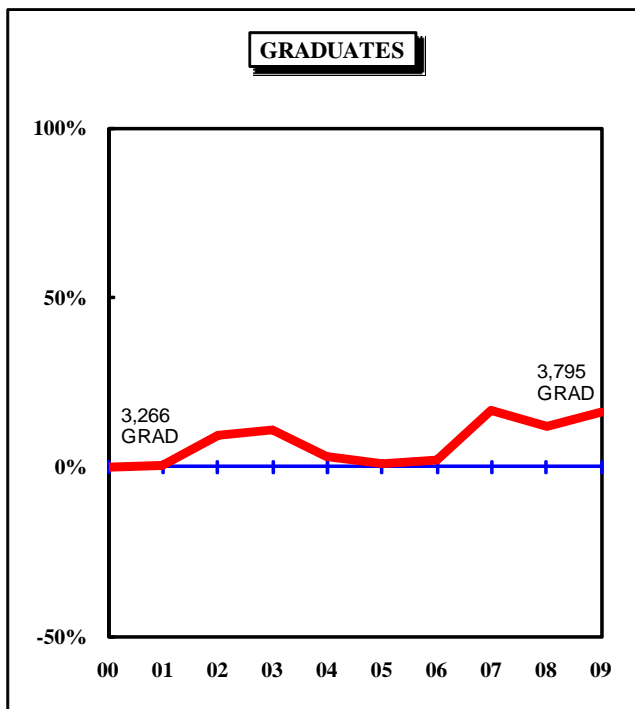
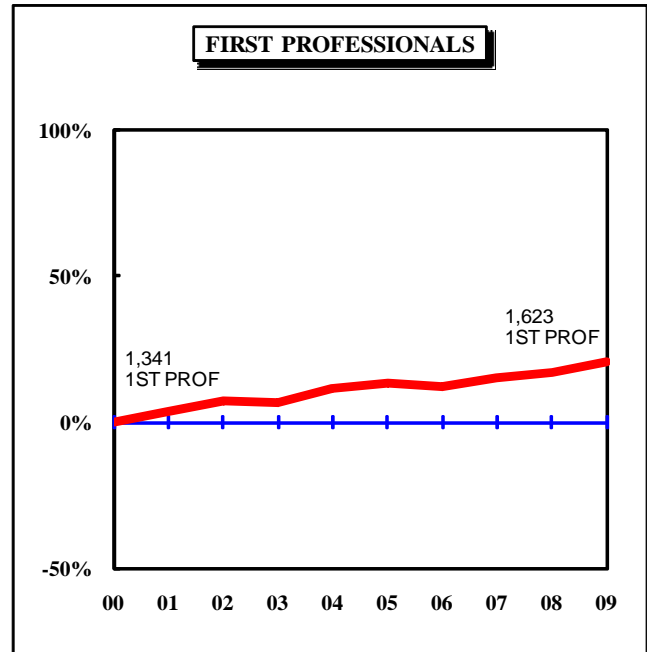
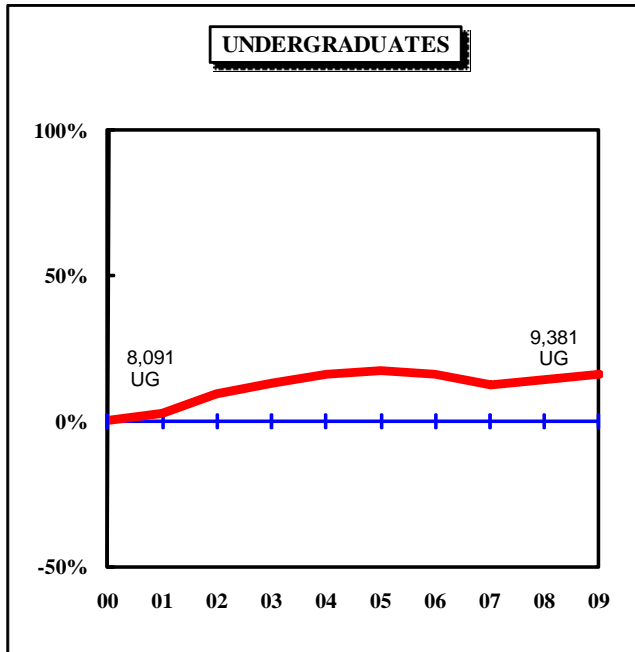
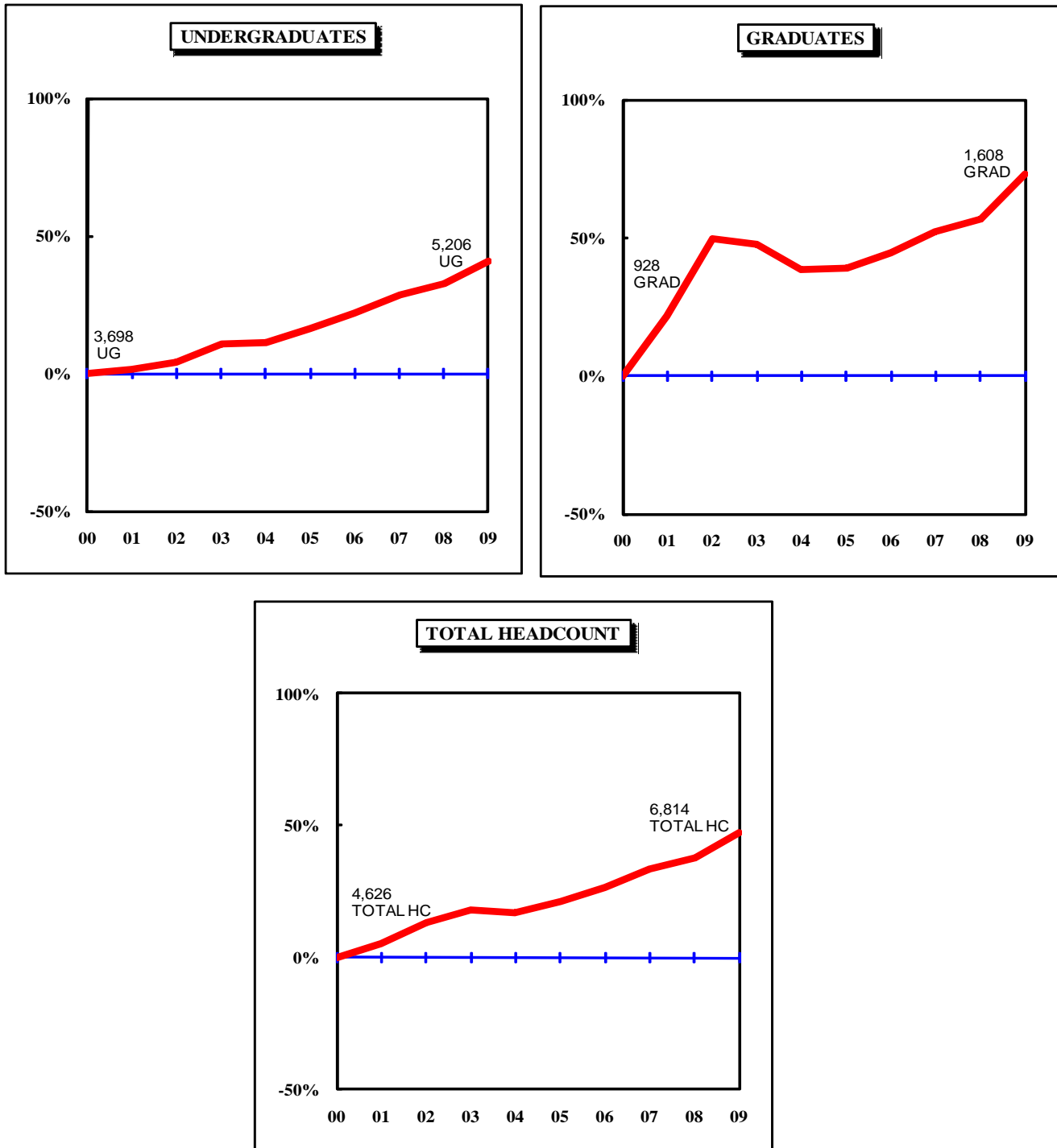


Figure 1.3: Rate of Change in Fall Headcount by Student Level and Campus, Fall 2000 to Fall 2009
MISSOURI S&T



**Figure 1.4: Rate of Change in Fall Headcount by Student Level and Campus,
Fall 2000 to Fall 2009**
UNIVERSITY OF MISSOURI-ST. LOUIS

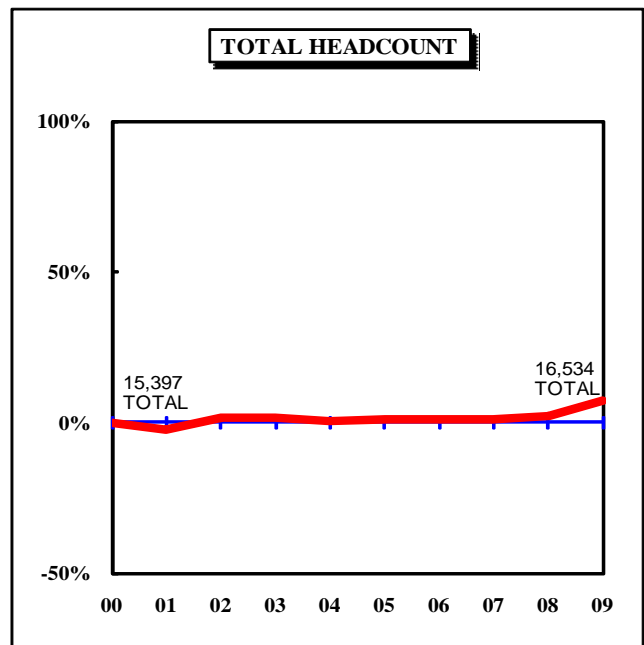
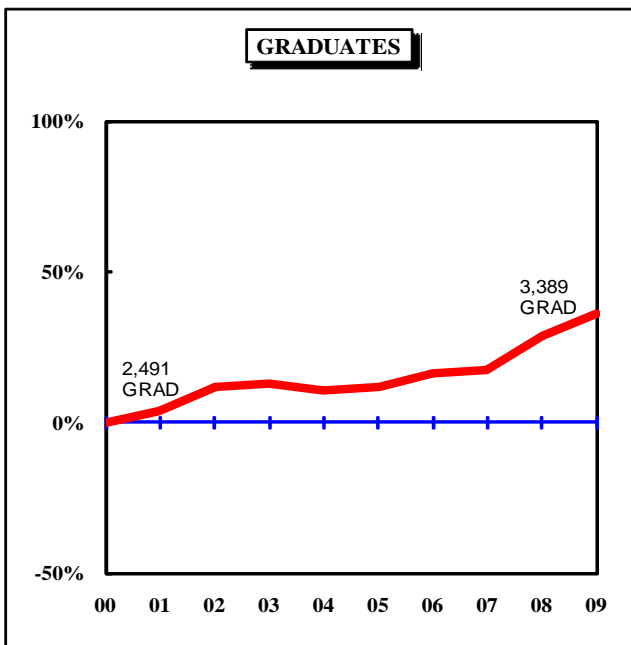
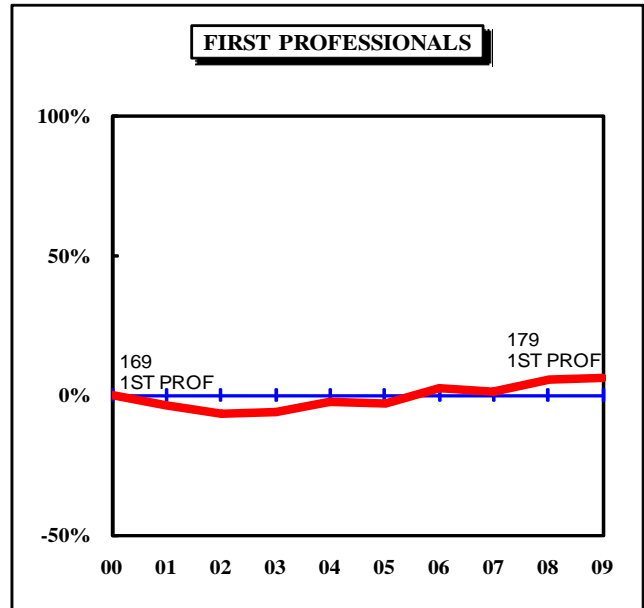
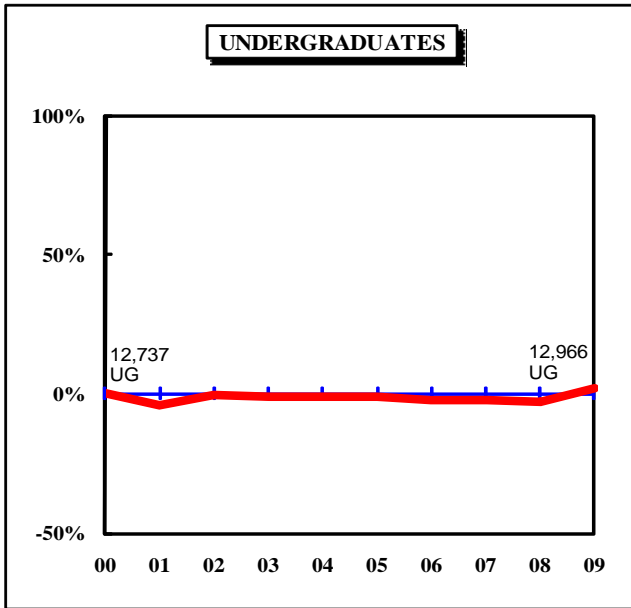
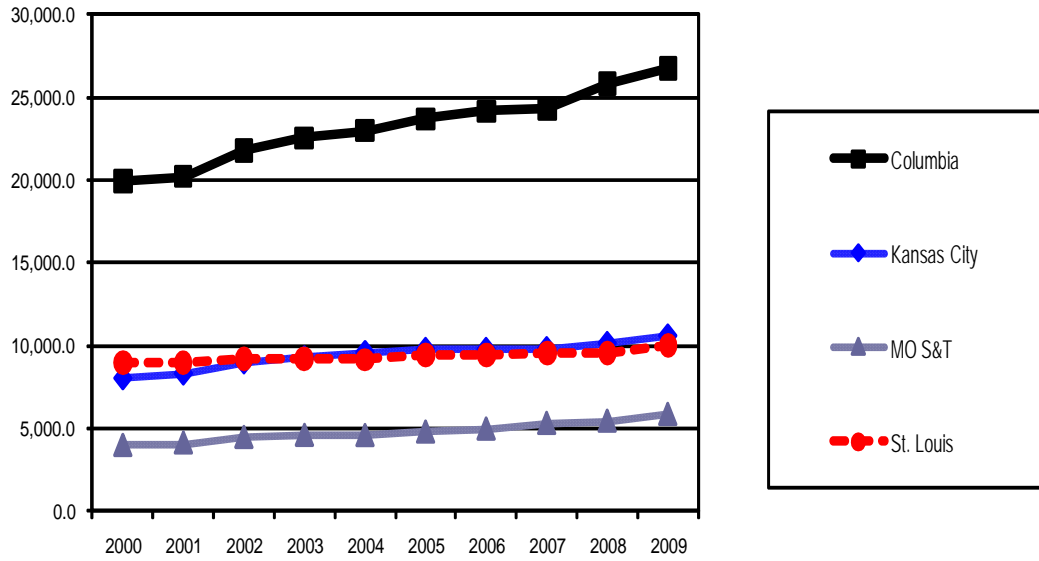


Table 1. Headcount History by Student Level and Campus, Fall 2000 to Fall 2009

Campus	Level	2000	2001	2002	2003	2004	2005	2006	2007	2008	2009	10 yr. Change
Columbia	Undergraduate	18,058	18,431	19,698	20,441	20,883	21,335	21,484	21,586	22,980	23,799	32%
	Professional	1,155	1,162	1,146	1,109	1,069	1,083	1,102	1,111	1,126	1,150	0%
	Graduate	4,096	4,074	5,280	5,255	5,051	5,512	5,598	5,708	6,024	6,288	54%
	Total	23,309	23,667	26,124	26,805	27,003	27,930	28,184	28,405	30,130	31,237	34%
Kansas City	Undergraduate	8,091	8,299	8,870	9,167	9,393	9,487	9,383	9,094	9,261	9,381	16%
	Professional	1,341	1,390	1,444	1,435	1,494	1,523	1,509	1,548	1,569	1,623	21%
	Graduate	3,266	3,280	3,567	3,624	3,369	3,296	3,321	3,800	3,651	3,795	16%
	Total*	12,698	12,969	13,881	14,226	14,256	14,306	14,213	14,442	14,481	14,799	17%
MO S&T	Undergraduate	3,698	3,756	3,849	4,089	4,119	4,311	4,515	4,752	4,911	5,206	41%
	Graduate	928	1,127	1,391	1,370	1,285	1,289	1,343	1,414	1,456	1,608	73%
	Total	4,626	4,883	5,240	5,459	5,404	5,600	5,858	6,166	6,367	6,814	47%
St. Louis	Undergraduate	12,737	12,251	12,715	12,624	12,572	12,606	12,459	12,432	12,358	12,966	2%
	Professional	169	163	158	159	165	164	173	171	178	179	6%
	Graduate	2,491	2,579	2,785	2,816	2,761	2,778	2,896	2,924	3,205	3,389	36%
	Total*	15,397	14,993	15,658	15,599	15,498	15,548	15,528	15,527	15,741	16,534	7%
System	Undergraduate	42,584	42,737	45,132	46,321	46,967	47,739	47,841	47,864	49,510	51,352	21%
	Professional	2,665	2,715	2,748	2,703	2,728	2,770	2,784	2,830	2,873	2,952	11%
	Graduate	10,781	11,060	13,023	13,065	12,466	12,875	13,158	13,846	14,336	15,080	40%
	Grand Total	56,030	56,512	60,903	62,089	62,161	63,384	63,783	64,540	66,719	69,384	24%

*The total enrollment for UMKC and UMSL include students taking college credit at their high school through dual credit programs. When these students are excluded from the headcount, the total enrollment for UMKC is 13,433 and the total enrollment for UMSL is 12,886.

Figure 2. Full-time Equivalence History by Campus, 2000 to 2009



Source: EMSAS Fall Enrollment file
IR&P/LCB 10/09

Full-time Equivalent History by Campus, 2000 to 2009

Campus	2000	2001	2002	2003	2004	2005	2006	2007	2008	2009
Columbia	19,950.0	20,231.0	21,804.0	22,556.0	23,000.0	23,703.6	24,182.7	24,280.4	25,840.2	26,797.4
Kansas City	8,049.0	8,334.0	9,001.0	9,290.0	9,607.7	9,795.3	9,797.9	9,843.8	10,152.4	10,597.5
MO S&T	3,997.0	4,148.0	4,481.0	4,604.0	4,594.1	4,799.9	4,982.6	5,323.0	5,452.9	5,860.4
St. Louis	8,986.0	8,958.0	9,214.0	9,224.0	9,162.0	9,451.9	9,467.5	9,546.9	9,578.5	10,031.8
Total	40,982.0	41,671.0	44,500.0	45,674.0	46,363.8	47,750.7	48,430.7	48,994.0	51,023.9	53,287.1

(Totals may not add due to rounding.)

Table 2.0 Headcounts, Full-time Equivalence, and Student Credit Hours by Location, Fall 2005 to Fall 2009

	<u>On-Campus</u>					<u>Off-Campus</u>					<u>Total</u>					5-yr. Change
	FS05	FS06	FS07	FS08	FS09	FS05	FS06	FS07	FS08	FS09	FS05	FS06	FS07	FS08	FS09	
Headcount by Student Level																
Undergraduate																
Fresh & Soph DS	17,577	17,570	17,898	19,280	19,833	19	15	30	28	46	17,596	17,585	17,928	19,308	19,879	13%
Junior & Senior DS	23,702	23,876	23,862	23,990	25,161	153	147	222	254	283	23,855	24,023	24,084	24,244	25,444	7%
Nondegree	<u>763</u>	<u>784</u>	<u>737</u>	<u>861</u>	<u>859</u>	<u>5,525</u>	<u>5,449</u>	<u>5,115</u>	<u>5,097</u>	<u>5,170</u>	<u>6,288</u>	<u>6,233</u>	<u>5,852</u>	<u>5,958</u>	<u>6,029</u>	-4%
Total Undergraduate	42,042	42,230	42,497	44,131	45,853	5,697	5,611	5,367	5,379	5,499	47,739	47,841	47,864	49,510	51,352	8%
First Professional																
Dentistry (DDS)	388	393	401	399	401	0	0	0	0	0	388	393	401	399	401	3%
Law (JD)	972	971	956	945	943	0	0	0	0	0	972	971	956	945	943	-3%
Medicine (MD)	736	738	759	767	769	0	0	0	0	0	736	738	759	767	769	4%
Optometry (OD)	164	173	171	178	179	0	0	0	0	0	164	173	171	178	179	9%
Pharmacy (DPharm)	243	238	238	298	339	0	0	27	0	0	243	238	265	298	339	40%
Vet. Med. (DVM)	<u>267</u>	<u>271</u>	<u>278</u>	<u>286</u>	<u>321</u>	<u>0</u>	<u>0</u>	<u>0</u>	<u>0</u>	<u>0</u>	<u>267</u>	<u>271</u>	<u>278</u>	<u>286</u>	<u>321</u>	20%
Total First Professional	2,770	2,784	2,803	2,873	2,952	0	0	27	0	0	2,770	2,784	2,830	2,873	2,952	7%
Graduate																
Masters & Ed. Spec.	7,350	7,456	7,544	7,629	7,907	1,202	1,321	1,571	1,802	2,156	8,552	8,777	9,115	9,431	10,063	18%
Doctoral	3,356	3,376	3,414	3,526	3,766	113	112	101	120	124	3,469	3,488	3,515	3,646	3,890	12%
Nondegree	<u>446</u>	<u>430</u>	<u>841</u>	<u>699</u>	<u>642</u>	<u>408</u>	<u>463</u>	<u>375</u>	<u>560</u>	<u>485</u>	<u>854</u>	<u>893</u>	<u>1,216</u>	<u>1,259</u>	<u>1,127</u>	32%
Total Graduate	11,152	11,262	11,799	11,854	12,315	1,723	1,896	2,047	2,482	2,765	12,875	13,158	13,846	14,336	15,080	17%
Grand Total Headcount																
	55,964	56,276	57,099	58,858	61,120	7,420	7,507	7,441	7,861	8,264	63,384	63,783	64,540	66,719	69,384	9%
FTE Enrollments by Student Level																
Undergraduate	36,123	36,576	36,849.3	38,546.8	40,133.0	1,804	1,805	1,792.4	1,747.1	1,835.7	37,926	38,381	38,642	40,294	41,969	11%
First Professional	2,730	2,751	2,772.6	2,840.9	2,917.3	0	0	27.0	0.0	0.0	2,730	2,751	2,800	2,841	2,917	7%
Graduate	<u>6,400</u>	<u>6,573</u>	<u>6,721.2</u>	<u>6,875.1</u>	<u>7,204.0</u>	<u>694</u>	<u>725</u>	<u>831.6</u>	<u>1,014.0</u>	<u>1,197.2</u>	<u>7,095</u>	<u>7,299</u>	<u>7,553</u>	<u>7,889</u>	<u>8,401</u>	18%
Total FTE	45,253	45,900	46,343.1	48,262.8	50,254.2	2,498	2,530	2,651.0	2,761.1	3,032.9	47,750.7	48,430.7	48,994.1	51,023.9	53,287.1	12%
SCH Produced by Student Level																
Undergraduate	541,837	548,634	552,740	578,202	601,995	27,055	27,074	26,885	26,207	27,536	568,892	575,708	579,625	604,409	629,531	11%
First Professional	47,502	48,162	47,791	48,067	50,808	0	0	353	0	0	47,502	48,162	48,144	48,067	50,808	7%
Graduate	<u>76,804</u>	<u>78,881</u>	<u>80,655</u>	<u>82,499</u>	<u>86,448</u>	<u>8,331</u>	<u>8,704</u>	<u>9,978</u>	<u>12,168</u>	<u>14,366</u>	<u>85,135</u>	<u>87,585</u>	<u>90,633</u>	<u>94,667</u>	<u>100,814</u>	18%
Total SCH	666,143	675,677	681,186	708,767	739,251	35,386	35,778	37,216	38,375	41,902	701,529	711,455	718,402	747,142	781,153	11%

Source: EMSAS Fall Enrollment file

Table 2.1 Headcounts, Full-time Equivalence, and Student Credit Hours by Location, Fall 2005 to Fall 2009

	<u>Columbia</u>															5-yr. Change
	<u>On-Campus</u>					<u>Off-Campus</u>					<u>Total</u>					
	FS05	FS06	FS07	FS08	FS09	FS05	FS06	FS07	FS08	FS09	FS05	FS06	FS07	FS08	FS09	
Headcount by Student Level																
Undergraduate																
Fresh & Soph DS	10,633	10,501	10,609	11,631	12,069	9	10	14	22	25	10,642	10,511	10,623	11,653	12,094	14%
Junior & Senior DS	10,268	10,588	10,637	10,827	11,247	108	105	126	168	187	10,376	10,693	10,763	10,995	11,434	10%
Nondegree	<u>225</u>	<u>209</u>	<u>180</u>	<u>229</u>	<u>200</u>	<u>92</u>	<u>71</u>	<u>20</u>	<u>103</u>	<u>71</u>	<u>317</u>	<u>280</u>	<u>200</u>	<u>332</u>	<u>271</u>	-15%
Total Undergraduate	21,126	21,298	21,426	22,687	23,516	209	186	160	293	283	21,335	21,484	21,586	22,980	23,799	12%
First Professional																
Law (JD)	444	456	458	453	444	0	0	0	0	0	444	456	458	453	444	0%
Medicine (MD)	372	375	375	387	385	0	0	0	0	0	372	375	375	387	385	3%
Vet. Med. (DVM)	<u>267</u>	<u>271</u>	<u>278</u>	<u>286</u>	<u>321</u>	<u>0</u>	<u>0</u>	<u>0</u>	<u>0</u>	<u>0</u>	<u>267</u>	<u>271</u>	<u>278</u>	<u>286</u>	<u>321</u>	20%
Total First Professional	1,083	1,102	1,111	1,126	1,150	0	0	0	0	0	1,083	1,102	1,111	1,126	1,150	6%
Graduate																
Masters & Ed. Spec.	2,196	2,160	2,192	2,261	2,243	695	800	914	962	1,238	2,891	2,960	3,106	3,223	3,481	20%
Doctoral	1,990	2,019	2,029	2,051	2,172	82	82	78	81	85	2,072	2,101	2,107	2,132	2,257	9%
Nondegree	<u>223</u>	<u>185</u>	<u>215</u>	<u>250</u>	<u>166</u>	<u>326</u>	<u>352</u>	<u>280</u>	<u>419</u>	<u>384</u>	<u>549</u>	<u>537</u>	<u>495</u>	<u>669</u>	<u>550</u>	0%
Total Graduate	4,409	4,364	4,436	4,562	4,581	1,103	1,234	1,272	1,462	1,707	5,512	5,598	5,708	6,024	6,288	14%
Grand Total Headcount																
	26,618	26,764	26,973	28,375	29,247	1,312	1,420	1,432	1,755	1,990	27,930	28,184	28,405	30,130	31,237	12%
FTE Enrollments by Student Level																
Undergraduate	19,372	19,712.3	19,785.3	21,097.0	21,837.7	68	68.3	61.3	99.7	105.0	19,440	19,781	19,847	21,197	21,943	13%
First Professional	1,066	1,083.4	1,093.8	1,108.2	1,134.3	0	0.0	0.0	0.0	0.0	1,066	1,083	1,094	1,108	1,134	6%
Graduate	<u>2,770</u>	<u>2,820.9</u>	<u>2,815.4</u>	<u>2,951.1</u>	<u>2,996.1</u>	<u>428</u>	<u>497.8</u>	<u>524.6</u>	<u>584.3</u>	<u>724.3</u>	<u>3,198</u>	<u>3,319</u>	<u>3,340</u>	<u>3,535</u>	<u>3,720</u>	16%
Total FTE	23,208	23,616.6	23,694.5	25,156.3	25,968.2	495	566.1	585.9	683.9	829.3	23,703.6	24,182.7	24,280.4	25,840.2	26,797.4	13%
SCH Produced by Student Level																
Undergraduate	290,581	295,684	296,780	316,455	327,566	1,016	1,025	919	1,495	1,575	291,597	296,709	297,699	317,950	329,141	13%
First Professional	17,050	17,792	17,256	16,596	17,899	0	0	0	0	0	17,050	17,792	17,256	16,596	17,899	5%
Graduate	<u>33,241</u>	<u>33,851</u>	<u>33,785</u>	<u>35,413</u>	<u>35,954</u>	<u>5,130</u>	<u>5,973</u>	<u>6,295</u>	<u>7,011</u>	<u>8,691</u>	<u>38,371</u>	<u>39,824</u>	<u>40,080</u>	<u>42,424</u>	<u>44,645</u>	16%
Total SCH	340,872	347,327	347,821	368,463	381,418	6,146	6,998	7,214	8,506	10,266	347,018	354,325	355,035	376,969	391,684	13%

Source: EMSAS Fall Enrollment file

Table 2.2 Headcounts, Full-time Equivalence, and Student Credit Hours by Location, Fall 2005 to Fall 2009

	<u>On-Campus</u>					<u>Kansas City</u> <u>Off-Campus</u>					<u>Total</u>					5-yr. Change
	FS05	FS06	FS07	FS08	FS09	FS05	FS06	FS07	FS08	FS09	FS05	FS06	FS07	FS08	FS09	
Headcount by Student Level																
Undergraduate																
Fresh & Soph DS	2,865	2,880	3,029	3,017	3,126	0	0	13	0	0	2,865	2,880	3,042	3,017	3,126	9%
Junior & Senior DS	4,200	4,187	3,890	4,330	4,591	0	0	43	4	4	4,200	4,187	3,933	4,334	4,595	9%
Nondegree	<u>273</u>	<u>284</u>	<u>255</u>	<u>307</u>	<u>313</u>	<u>2,149</u>	<u>2,032</u>	<u>1,864</u>	<u>1,603</u>	<u>1,347</u>	<u>2,422</u>	<u>2,316</u>	<u>2,119</u>	<u>1,910</u>	<u>1,660</u>	-31%
Total Undergraduate	7,338	7,351	7,174	7,654	8,030	2,149	2,032	1,920	1,607	1,351	9,487	9,383	9,094	9,261	9,381	-1%
First Professional																
Dentistry (DDS)	388	393	401	399	401	0	0	0	0	0	388	393	401	399	401	3%
Law (JD)	528	515	498	492	499	0	0	0	0	0	528	515	498	492	499	-5%
Medicine (MD)	364	363	384	380	384	0	0	0	0	0	364	363	384	380	384	5%
Pharmacy (DPharm)	<u>243</u>	<u>238</u>	<u>238</u>	<u>298</u>	<u>339</u>	<u>0</u>	<u>0</u>	<u>27</u>	<u>0</u>	<u>0</u>	<u>243</u>	<u>238</u>	<u>265</u>	<u>298</u>	<u>339</u>	40%
Total First Professional	1,523	1,509	1,521	1,569	1,623	0	0	27	0	0	1,523	1,509	1,548	1,569	1,623	7%
Graduate																
Masters & Ed. Spec.	2,570	2,571	2,623	2,670	2,801	0	1	54	53	32	2,570	2,572	2,677	2,723	2,833	10%
Doctoral	543	522	536	624	656	0	0	0	7	0	543	522	536	631	656	21%
Nondegree	<u>142</u>	<u>143</u>	<u>505</u>	<u>297</u>	<u>306</u>	<u>41</u>	<u>84</u>	<u>82</u>	<u>0</u>	<u>0</u>	<u>183</u>	<u>227</u>	<u>587</u>	<u>297</u>	<u>306</u>	67%
Total Graduate	3,255	3,236	3,664	3,591	3,763	41	85	136	60	32	3,296	3,321	3,800	3,651	3,795	15%
Grand Total																
Headcount	12,116	12,096	12,359	12,814	13,416	2,190	2,117	2,083	1,667	1,383	14,306	14,213	14,442	14,481	14,799	3%
FTE Enrollments by Student Level																
Undergraduate	6,012.1	6,032.3	5,887.2	6,272.8	6,647.9	528	495.3	512.7	389.3	324.5	6,540	6,528	6,400	6,662	6,972	7%
First Professional	1,499.8	1,495.0	1,507.8	1,554.7	1,603.9	0	0.0	27.0	0.0	0.0	1,500	1,495	1,535	1,555	1,604	7%
Graduate	<u>1,746.7</u>	<u>1,760.3</u>	<u>1,873.8</u>	<u>1,902.4</u>	<u>2,006.6</u>	<u>9</u>	<u>14.9</u>	<u>35.3</u>	<u>33.3</u>	<u>14.6</u>	<u>1,756</u>	<u>1,775</u>	<u>1,909</u>	<u>1,936</u>	<u>2,021</u>	15%
Total FTE	9,258.6	9,287.6	9,268.8	9,729.9	10,258.5	537	510.2	575.0	422.5	339.1	9,795.3	9,797.8	9,843.8	10,152.4	10,597.5	8%
SCH Produced by Student Level																
Undergraduate	90,181	90,485	88,308	94,092	99,719	7,916	7,430	7,691	5,839	4,867	98,097	97,915	95,999	99,931	104,586	7%
First Professional	27,113	26,941	27,029	27,906	29,239	0	0	353	0	0	27,113	26,941	27,382	27,906	29,239	8%
Graduate	<u>20,961</u>	<u>21,124</u>	<u>22,486</u>	<u>22,829</u>	<u>24,080</u>	<u>108</u>	<u>179</u>	<u>423</u>	<u>399</u>	<u>175</u>	<u>21,069</u>	<u>21,303</u>	<u>22,909</u>	<u>23,228</u>	<u>24,255</u>	15%
Total SCH	138,255	138,550	137,823	144,827	153,037	8,024	7,609	8,467	6,238	5,042	146,279	146,159	146,290	151,065	158,079	8%

Source: EMSAS Fall Enrollment file

Table 2.3 Headcounts, Full-time Equivalence, and Student Credit Hours by Location, Fall 2005 to Fall 2009

	<u>On-Campus</u>					<u>Missouri S&T</u> <u>Off-Campus</u>					<u>Total</u>					5-yr. Change
	FS05	FS06	FS07	FS08	FS09	FS05	FS06	FS07	FS08	FS09	FS05	FS06	FS07	FS08	FS09	
Headcount by Student Level																
Undergraduate																
Fresh & Soph DS	1,915	1,993	2,127	2,180	2,291	0	0	0	0	13	1,915	1,993	2,127	2,180	2,304	20%
Junior & Senior DS	2,304	2,472	2,578	2,693	2,829	0	0	0	2	12	2,304	2,472	2,578	2,695	2,841	23%
Nondegree	<u>29</u>	<u>34</u>	<u>35</u>	<u>24</u>	<u>36</u>	<u>63</u>	<u>16</u>	<u>12</u>	<u>12</u>	<u>25</u>	<u>92</u>	<u>50</u>	<u>47</u>	<u>36</u>	<u>61</u>	-34%
Total Undergraduate	4,248	4,499	4,740	4,897	5,156	63	16	12	14	50	4,311	4,515	4,752	4,911	5,206	21%
Graduate																
Masters & Ed. Spec.	487	540	557	523	593	410	434	502	547	575	897	974	1,059	1,070	1,168	30%
Doctoral	357	338	331	345	401	12	12	13	19	23	369	350	344	364	424	15%
Nondegree	<u>8</u>	<u>12</u>	<u>8</u>	<u>2</u>	<u>3</u>	<u>15</u>	<u>7</u>	<u>3</u>	<u>20</u>	<u>13</u>	<u>23</u>	<u>19</u>	<u>11</u>	<u>22</u>	<u>16</u>	-30%
Total Graduate	852	890	896	870	997	437	453	518	586	611	1,289	1,343	1,414	1,456	1,608	25%
Grand Total																
Headcount	5,100	5,389	5,636	5,767	6,153	500	469	530	600	661	5,600	5,858	6,166	6,367	6,814	22%
FTE Enrollments by Student Level																
Undergraduate	3,987	4,196.7	4,480.5	4,618.8	4,867.6	13	3.1	2.7	2.9	13.9	4,000	4,200	4,483	4,622	4,882	22%
Graduate	<u>588</u>	<u>615.2</u>	<u>611.1</u>	<u>587.8</u>	<u>703.0</u>	<u>212</u>	<u>167.7</u>	<u>228.7</u>	<u>243.4</u>	<u>275.9</u>	<u>800</u>	<u>783</u>	<u>840</u>	<u>831</u>	<u>979</u>	22%
Total FTE	4,575	4,811.9	5,091.6	5,206.6	5,570.6	225	170.8	231.4	246.3	289.9	4,799.9	4,982.7	5,323.0	5,452.9	5,860.4	22%
SCH Produced by Student Level																
Undergraduate	59,799	62,950	67,208	69,282	73,014	201	46	40	43	209	60,000	62,996	67,248	69,325	73,223	22%
Graduate	<u>7,055</u>	<u>7,382</u>	<u>7,333</u>	<u>7,054</u>	<u>8,436</u>	<u>2,544</u>	<u>2,012</u>	<u>2,744</u>	<u>2,921</u>	<u>3,311</u>	<u>9,599</u>	<u>9,394</u>	<u>10,077</u>	<u>9,975</u>	<u>11,747</u>	22%
Total SCH	66,854	70,332	74,541	76,336	81,450	2,745	2,058	2,784	2,964	3,520	69,599	72,390	77,325	79,300	84,970	22%

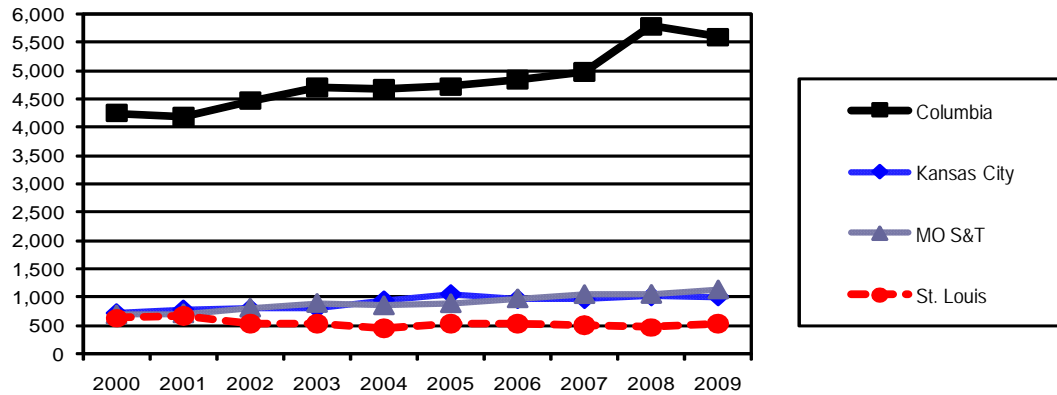
Source: EMSAS Fall Enrollment file

Table 2.4 Headcounts, Full-time Equivalence, and Student Credit Hours by Location, Fall 2005 to Fall 2009

	<u>On-Campus</u>					<u>St. Louis</u> <u>Off-Campus</u>					<u>Total</u>					5-yr. Change
	FS05	FS06	FS07	FS08	FS09	FS05	FS06	FS07	FS08	FS09	FS05	FS06	FS07	FS08	FS09	
Headcount by Student Level																
Undergraduate																
Fresh & Soph DS	2,164	2,196	2,133	2,452	2,347	10	5	3	6	8	2,174	2,201	2,136	2,458	2,355	8%
Junior & Senior DS	6,930	6,629	6,757	6,140	6,494	45	42	53	80	80	6,975	6,671	6,810	6,220	6,574	-6%
Nondegree	<u>236</u>	<u>257</u>	<u>267</u>	<u>301</u>	<u>310</u>	<u>3,221</u>	<u>3,330</u>	<u>3,219</u>	<u>3,379</u>	<u>3,727</u>	<u>3,457</u>	<u>3,587</u>	<u>3,486</u>	<u>3,680</u>	<u>4,037</u>	17%
Total Undergraduate	9,330	9,082	9,157	8,893	9,151	3,276	3,377	3,275	3,465	3,815	12,606	12,459	12,432	12,358	12,966	3%
First Professional																
Optometry (OD)	<u>164</u>	<u>173</u>	<u>171</u>	<u>178</u>	<u>179</u>						<u>164</u>	<u>173</u>	<u>171</u>	<u>178</u>	<u>179</u>	9%
Total First Professional	164	173	171	178	179	0	0	0	0	0	164	173	171	178	179	9%
Graduate																
Masters & Ed. Spec.	2,097	2,185	2,172	2,175	2,270	97	86	101	240	311	2,194	2,271	2,273	2,415	2,581	18%
Doctoral	466	497	518	506	537	19	18	10	13	16	485	515	528	519	553	14%
Nondegree	<u>73</u>	<u>90</u>	<u>113</u>	<u>150</u>	<u>167</u>	<u>26</u>	<u>20</u>	<u>10</u>	<u>121</u>	<u>88</u>	<u>99</u>	<u>110</u>	<u>123</u>	<u>271</u>	<u>255</u>	158%
Total Graduate	2,636	2,772	2,803	2,831	2,974	142	124	121	374	415	2,778	2,896	2,924	3,205	3,389	22%
Grand Total																
Headcount	12,130	12,027	12,131	11,902	12,304	3,418	3,501	3,396	3,839	4,230	15,548	15,528	15,527	15,741	16,534	6%
FTE Enrollments by Student Level																
Undergraduate	6,752	6,634.3	6,696.3	6,558.2	6,779.8	1,195	1,238.2	1,215.7	1,255.3	1,392.3	7,947	7,873	7,912	7,814	8,172	3%
First Professional	164	173.0	171.0	178.0	179.0	0	0.0	0.0	0.0	0.0	164	173	171	178	179	9%
Graduate	<u>1,296</u>	<u>1,377.0</u>	<u>1,420.9</u>	<u>1,433.8</u>	<u>1,498.2</u>	<u>46</u>	<u>45.0</u>	<u>43.0</u>	<u>153.1</u>	<u>182.4</u>	<u>1,341</u>	<u>1,422</u>	<u>1,464</u>	<u>1,587</u>	<u>1,681</u>	25%
Total FTE	8,211	8,184.3	8,288.2	8,170.0	8,457.0	1,241	1,283.2	1,258.7	1,408.4	1,574.7	9,451.9	9,467.5	9,546.9	9,578.4	10,031.8	6%
SCH Produced by Student Level																
Undergraduate	101,276	99,515	100,444	98,373	101,697	17,922	18,573	18,235	18,830	20,885	119,198	118,088	118,679	117,203	122,582	3%
First Professional	3,339	3,429	3,506	3,566	3,671	0	0	0	0	0	3,339	3,429	3,506	3,566	3,671	10%
Graduate	<u>15,547</u>	<u>16,524</u>	<u>17,051</u>	<u>17,203</u>	<u>17,979</u>	<u>549</u>	<u>540</u>	<u>516</u>	<u>1,837</u>	<u>2,189</u>	<u>16,096</u>	<u>17,064</u>	<u>17,567</u>	<u>19,040</u>	<u>20,168</u>	25%
Total SCH	120,162	119,468	121,001	119,142	123,347	18,471	19,113	18,751	20,667	23,074	138,633	138,581	139,752	139,809	146,421	6%

Source: EMSAS Fall Enrollment file

Figure 3a. First-time College Freshmen History, 2000 to 2009

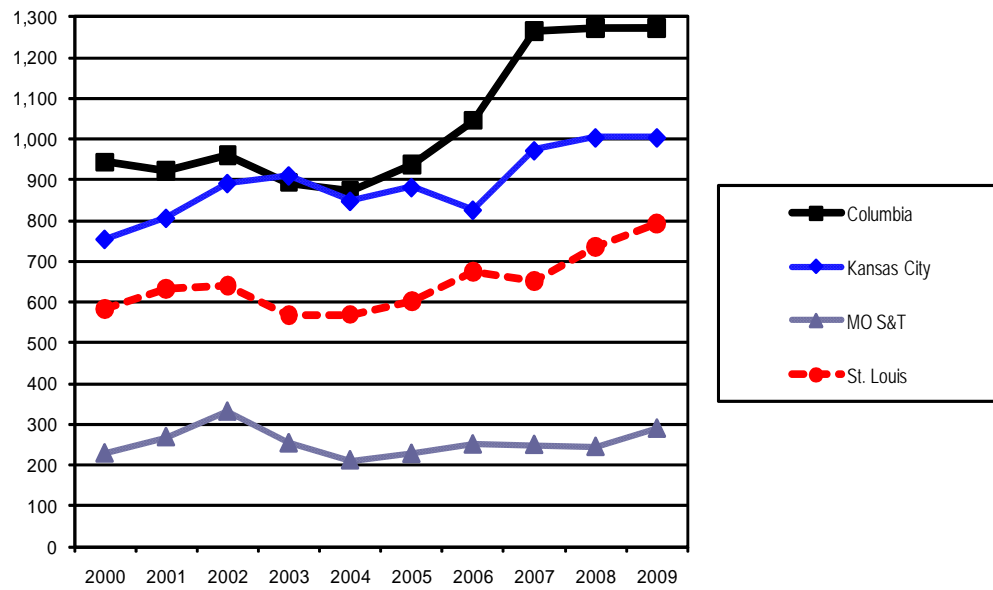


Source: EMSAS Fall Enrollmentfile
IR&P/LCB 10/09

First-time College Freshmen History, 2000 to 2009

Campus	2000	2001	2002	2003	2004	2005	2006	2007	2008	2009
Columbia	4,250	4,191	4,468	4,702	4,673	4,720	4,842	4,981	5,780	5,589
Kansas City	715	778	790	799	939	1,048	959	959	1,008	1,007
MO S&T	696	715	815	897	856	892	977	1,050	1,055	1,132
St. Louis	631	663	533	542	451	536	530	502	468	527
Total	6,292	6,347	6,606	6,940	6,919	7,196	7,308	7,492	8,311	8,255

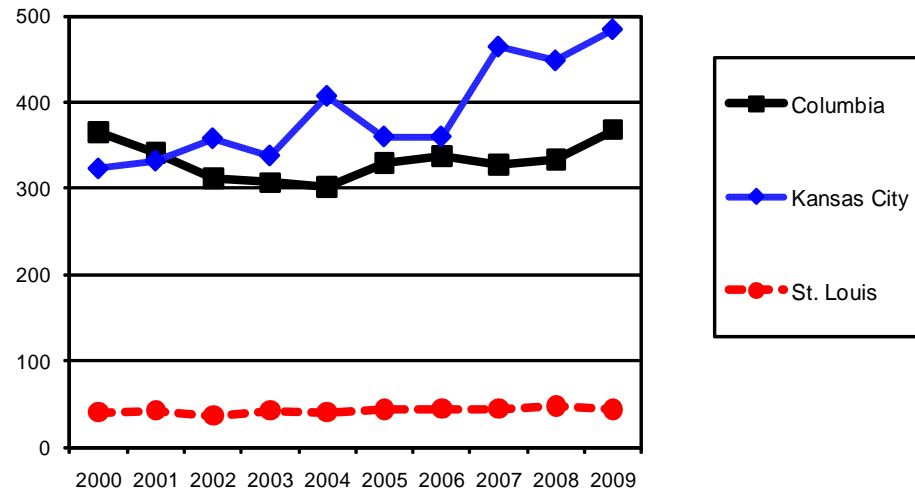
Figure 3b. New Graduate Student History by Campus, 2000 to 2009



New Graduate Student History by Campus, 2000 to 2009

Campus	2000	2001	2002	2003	2004	2005	2006	2007	2008	2009
Columbia	944	923	962	894	873	939	1,046	1,266	1,274	1,272
Kansas City	754	806	892	911	848	882	826	973	1,005	1,005
MO S&T	229	269	332	254	212	228	251	250	245	290
St. Louis	584	632	641	568	570	603	674	652	736	792
Total	2,511	2,630	2,827	2,627	2,503	2,652	2,797	3,141	3,260	3,359

Figure 3c. New First Professional Student History by Campus, 2000 to 2009



New First Professional Student History By Campus, 2000 to 2009

Campus	2000	2001	2002	2003	2004	2005	2006	2007	2008	2009
Columbia	365	342	312	307	302	329	338	328	334	368
Kansas City	324	333	359	339	408	361	361	465	449	485
St. Louis	41	43	37	43	41	44	45	45	48	44
Total	730	718	708	689	751	734	744	838	831	897

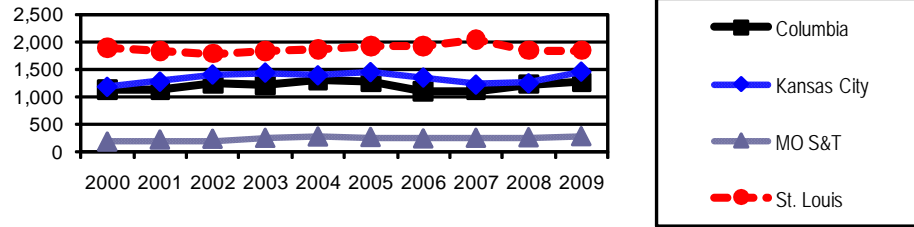
Table 3. On-Campus New Student Headcount, Fall 2005 - Fall 2009

		2005	2006	2007	2008	2009	5 yr. Change
Columbia							
Freshmen							
	Degree-Seeking	4,718	4,836	4,980	5,780	5,589	18%
	Non Degree-Seeking	2	6	1	0	0	-100%
Undergraduate Transfers							
	Degree-Seeking	1,178	1,030	986	1,077	1,108	-6%
	Non Degree-Seeking	103	78	130	153	157	52%
Professional							
	Degree-Seeking	329	338	328	334	368	12%
Graduate							
	Degree-Seeking	841	940	1,142	1,167	1,169	39%
	Non Degree-Seeking	98	106	124	107	103	5%
Kansas City							
Freshmen							
	Degree-Seeking	1,039	955	959	1,008	1,004	-3%
	Non Degree-Seeking	9	4	0	0	3	-67%
Undergraduate Transfers							
	Degree-Seeking	1,302	1,176	1,192	1,238	1,449	11%
	Non Degree-Seeking	141	167	22	0	1	-99%
Professional							
	Degree-Seeking	361	361	462	447	481	33%
	Non Degree-Seeking	0	0	3	2	4	
Graduate							
	Degree-Seeking	801	768	973	1,005	1,004	25%
	Non Degree-Seeking	81	58	0	0	1	-99%
Missouri S&T							
Freshmen							
	Degree-Seeking	884	962	1,041	1,045	1,108	25%
	Non Degree-Seeking	8	15	9	10	24	200%
Undergraduate Transfers							
	Degree-Seeking	273	248	264	272	292	7%
	Non Degree-Seeking	5	4	0	2	1	-80%
Graduate							
	Degree-Seeking	225	242	243	244	289	28%
	Non Degree-Seeking	3	9	7	1	1	-67%
St Louis							
Freshmen							
	Degree-Seeking	531	525	498	468	525	-1%
	Non Degree-Seeking	5	5	4	11	2	-60%
Undergraduate Transfers							
	Degree-Seeking	1,762	1,763	1,852	1,667	1,673	-5%
	Non Degree-Seeking	150	159	180	179	172	15%
Professional							
	Degree-Seeking	44	45	45	48	44	0%
Graduate							
	Degree-Seeking	576	621	583	685	750	30%
	Non Degree-Seeking	27	53	69	51	42	56%

Source: EMSAS Fall Enrollment file

IR&P/LCB 10/09

Figure 4. First-time On-Campus Undergraduate Transfer Student History by Campus, 2000 to 2009



First-time On-Campus Undergraduate Transfer Student History by Campus, 2000 to 2009

Campus	2000	2001	2002	2003	2004	2005	2006	2007	2008	2009
Columbia	1,131	1,122	1,234	1,215	1,295	1,281	1,108	1,116	1,230	1,265
Kansas City	1,175	1,268	1,399	1,432	1,382	1,443	1,343	1,214	1,238	1,450
MO S&T	195	232	247	263	287	278	252	264	274	293
St. Louis	1,884	1,823	1,787	1,829	1,863	1,912	1,922	2,032	1,846	1,845
Total	4,385	4,445	4,667	4,739	4,827	4,914	4,625	4,626	4,588	4,853

Table 4.0a Resident Headcount History by Student Level, Load, and Campus, Fall 2005 to Fall 2009

Level	2005	2006	2007	2008	2009	5 yr. Change
UNIVERSITY OF MISSOURI SYSTEM FULL-TIME RESIDENT HEADCOUNT						
Undergraduate						
Freshman & Soph DS	13,482	13,412	13,504	14,380	14,514	8%
Junior & Senior DS	16,017	16,335	16,378	16,556	17,441	9%
Nondegree	117	124	138	130	126	8%
Total System Full-time Resident Undergraduate	29,616	29,871	30,020	31,066	32,081	8%
First Professional						
Dentistry (DDS)	239	252	265	276	286	20%
Law (JD)	804	778	771	776	797	-1%
Medicine (MD)	533	611	641	652	649	22%
Optometry (OD)	87	83	86	89	86	-1%
Pharmacy (Dpharm)	228	225	252	278	320	40%
Vet. Med (DVM)	244	254	255	259	264	8%
Total System Full-time Resident 1st Professional	2,135	2,203	2,270	2,330	2,402	13%
Graduate						
Masters & Ed. Spec.	2,098	2,084	2,051	2,036	2,311	10%
Doctoral	450	516	489	501	544	21%
Nondegree	61	48	47	51	68	11%
Total System Full-time Resident Graduate	2,609	2,648	2,587	2,588	2,923	12%
Total System Full-time Resident Headcount	34,360	34,722	34,877	35,984	37,406	9%
UNIVERSITY OF MISSOURI SYSTEM PART-TIME RESIDENT HEADCOUNT						
Undergraduate						
Freshman & Soph DS	976	942	1,012	1,083	1,059	9%
Junior & Senior DS	4,535	4,326	4,307	4,142	4,266	-6%
Nondegree	5,846	5,784	5,483	5,477	5,568	-5%
Total System Part-time Resident Undergraduate	11,357	11,052	10,802	10,702	10,893	-4%
First Professional						
Law (JD)	19	35	40	33	26	37%
Medicine (MD)	89	1	0	0	0	
Vet. Med (DVM)	5	3	0	0	0	
Total System Part-time Resident 1st Professional	113	39	40	33	26	-77%
Graduate						
Masters & Ed. Spec.	3,654	3,624	3,790	3,953	4,164	14%
Doctoral	1,154	1,103	1,180	1,197	1,254	9%
Nondegree	573	601	945	905	825	44%
Total System Part-time Resident Graduate	5,381	5,328	5,915	6,055	6,243	16%
Total System Part-time Resident Headcount	16,851	16,419	16,757	16,790	17,162	2%
UNIVERSITY OF MISSOURI SYSTEM TOTAL RESIDENT HEADCOUNT						
Undergraduate						
Freshman & Soph DS	14,458	14,354	14,516	15,463	15,573	8%
Junior & Senior DS	20,552	20,661	20,685	20,698	21,707	6%
Nondegree	5,963	5,908	5,621	5,607	5,694	-5%
Total System Resident Undergraduate	40,973	40,923	40,822	41,768	42,974	5%
First Professional						
Dentistry (DDS)	239	252	265	276	286	20%
Law (JD)	823	813	811	809	823	0%
Medicine (MD)	622	612	641	652	649	4%
Optometry (OD)	87	83	86	89	86	-1%
Pharmacy (Dpharm)	228	225	252	278	320	40%
Vet. Med (DVM)	249	257	255	259	264	6%
Total System Resident 1st Professional	2,248	2,242	2,310	2,363	2,428	8%
Graduate						
Masters & Ed. Spec.	5,752	5,708	5,841	5,989	6,475	13%
Doctoral	1,604	1,619	1,669	1,698	1,798	12%
Nondegree	634	649	992	956	893	41%
Total System Resident Graduate	7,990	7,976	8,502	8,643	9,166	15%
Grand Total System Resident Headcount	51,211	51,141	51,634	52,774	54,568	7%

Table 4.0b Non-Resident Headcount History by Student Level, Load, and Campus, Fall 2005 to Fall 2009
5 yr.

Level	2005	2006	2007	2008	2009	Change
UNIVERSITY OF MISSOURI SYSTEM FULL-TIME NON-RESIDENT HEADCOUNT						
Undergraduate						
Freshman & Soph DS	2,988	3,051	3,191	3,649	4,119	38%
Junior & Senior DS	2,724	2,786	2,817	2,954	3,128	15%
Nondegree	92	96	111	151	142	54%
Total System Full-time Non-Resident Undergraduate	5,804	5,933	6,119	6,754	7,389	27%
First Professional						
Dentistry (DDS)	149	141	136	123	115	-23%
Law (JD)	143	151	137	126	112	-22%
Medicine (MD)	112	126	118	115	120	7%
Optometry (OD)	77	90	85	89	93	21%
Pharmacy (Dpharm)	15	13	13	20	19	27%
Vet. Med (DVM)	18	14	23	27	57	217%
Total System Full-time Non-Resident 1st Professional	514	535	512	500	516	0%
Graduate						
Masters & Ed. Spec.	1,495	1,697	1,777	1,774	1,875	25%
Doctoral	1,064	1,019	982	1,108	1,208	14%
Nondegree	29	34	28	37	31	7%
Total System Full-time Non-Resident Graduate	2,588	2,750	2,787	2,919	3,114	20%
Total System Full-time Non-Resident Headcount	8,906	9,218	9,418	10,173	11,019	24%
UNIVERSITY OF MISSOURI SYSTEM PART-TIME NON-RESIDENT HEADCOUNT						
Undergraduate						
Freshman & Soph DS	150	180	221	195	187	25%
Junior & Senior DS	579	576	582	592	609	5%
Nondegree	233	229	120	201	193	-17%
Total System Part-time Non-Resident Undergraduate	962	985	923	988	989	3%
First Professional						
Law (JD)	6	7	8	10	8	33%
Medicine (MD)	2	0	0	0	0	
Total System Part-time Non-Resident 1st Professional	8	7	8	10	8	0%
Graduate						
Masters & Ed. Spec.	1,305	1,372	1,497	1,668	1,713	31%
Doctoral	801	850	864	840	884	10%
Nondegree	191	210	196	266	203	6%
Total System Part-time Non-Resident Graduate	2,297	2,432	2,557	2,774	2,800	22%
Total System Part-time Non-Resident Headcount	3,267	3,424	3,488	3,772	3,797	16%
UNIVERSITY OF MISSOURI SYSTEM TOTAL NON-RESIDENT HEADCOUNT						
Undergraduate						
Freshman & Soph DS	3,138	3,231	3,412	3,844	4,306	37%
Junior & Senior DS	3,303	3,362	3,399	3,546	3,737	13%
Nondegree	325	325	231	352	335	3%
Total System Non-Resident Undergraduate	6,766	6,918	7,042	7,742	8,378	24%
First Professional						
Dentistry (DDS)	149	141	136	123	115	-23%
Law (JD)	149	158	145	136	120	-19%
Medicine (MD)	114	126	118	115	120	5%
Optometry (OD)	77	90	85	89	93	21%
Pharmacy (Dpharm)	15	13	13	20	19	27%
Vet. Med (DVM)	18	14	23	27	57	217%
Total System Non-Resident 1st Professional	522	542	520	510	524	0%
Graduate						
Masters & Ed. Spec.	2,800	3,069	3,274	3,442	3,588	28%
Doctoral	1,865	1,869	1,846	1,948	2,092	12%
Nondegree	220	244	224	303	234	6%
Total System Non-Resident Graduate	4,885	5,182	5,344	5,693	5,914	21%
Grand Total System Non-Resident Headcount	12,173	12,642	12,906	13,945	14,816	22%

Table 4.1a Resident Headcount History by Student Level, Load, and Campus, Fall 2005 to Fall 2009

Level	2005	2006	2007	2008	2009	5 yr. Change
UNIVERSITY OF MISSOURI-COLUMBIA FULL-TIME RESIDENT HEADCOUNT						
Undergraduate						
Freshman & Soph DS	8,552	8,463	8,438	9,079	9,099	6%
Junior & Senior DS	8,504	8,845	8,769	8,967	9,294	9%
Nondegree	3	1	9	2	2	-33%
Total MU Full-time Resident Undergraduate	17,059	17,309	17,216	18,048	18,395	8%
First Professional						
Law (JD)	415	404	404	398	409	-1%
Medicine (MD)	274	364	370	375	375	37%
Vet. Med (DVM)	244	254	255	259	264	8%
Total MU Full-time Resident 1st Professional	933	1,022	1,029	1,032	1,048	12%
Graduate						
Masters & Ed. Spec.	1,061	1,112	1,074	1,054	1,191	12%
Doctoral	292	336	305	322	376	29%
Nondegree	45	38	28	33	29	-36%
Total MU Full-time Resident Graduate	1,398	1,486	1,407	1,409	1,596	14%
Total MU Full-time Resident Headcount	19,390	19,817	19,652	20,489	21,039	9%
UNIVERSITY OF MISSOURI-COLUMBIA PART-TIME RESIDENT HEADCOUNT						
Undergraduate						
Freshman & Soph DS	255	217	267	249	257	1%
Junior & Senior DS	737	698	746	698	797	8%
Nondegree	229	204	143	213	186	-19%
Total MU Part-time Resident Undergraduate	1,221	1,119	1,156	1,160	1,240	2%
First Professional						
Law (JD)	9	13	14	14	4	-56%
Medicine (MD)	89	1	0	0	0	
Vet. Med (DVM)	5	3	0	0	0	
Total MU Part-time Resident 1st Professional	103	17	14	14	4	-96%
Graduate						
Masters & Ed. Spec.	858	808	935	1,012	1,059	23%
Doctoral	700	658	700	659	679	-3%
Nondegree	356	328	348	469	381	7%
Total MU Part-time Resident Graduate	1,914	1,794	1,983	2,140	2,119	11%
Total MU Part-time Resident Headcount	3,238	2,930	3,153	3,314	3,363	4%
UNIVERSITY OF MISSOURI-COLUMBIA TOTAL RESIDENT HEADCOUNT						
Undergraduate						
Freshman & Soph DS	8,807	8,680	8,705	9,328	9,356	6%
Junior & Senior DS	9,241	9,543	9,515	9,665	10,091	9%
Nondegree	232	205	152	215	188	-19%
Total MU Resident Undergraduate	18,280	18,428	18,372	19,208	19,635	7%
First Professional						
Law (JD)	424	417	418	412	413	-3%
Medicine (MD)	363	365	370	375	375	3%
Vet. Med (DVM)	249	257	255	259	264	6%
Total MU Resident 1st Professional	1,036	1,039	1,043	1,046	1,052	2%
Graduate						
Masters & Ed. Spec.	1,919	1,920	2,009	2,066	2,250	17%
Doctoral	992	994	1,005	981	1,055	6%
Nondegree	401	366	376	502	410	2%
Total MU Resident Graduate	3,312	3,280	3,390	3,549	3,715	12%
Grand Total MU Resident Headcount	22,628	22,747	22,805	23,803	24,402	8%

Table 4.1b Non-Resident Headcount History by Student Level, Load, and Campus, Fall 2005 to Fall 2009

Level	2005	2006	2007	2008	2009	5 yr. Change
UNIVERSITY OF MISSOURI-COLUMBIA FULL-TIME NON-RESIDENT HEADCOUNT						
Undergraduate						
Freshman & Soph DS	1,803	1,790	1,864	2,265	2,658	47%
Junior & Senior DS	1,074	1,094	1,169	1,249	1,274	19%
Nondegree	29	32	35	49	44	52%
Total MU Full-time Non-Resident Undergraduate	2,906	2,916	3,068	3,563	3,976	37%
First Professional						
Law (JD)	20	38	38	40	31	55%
Medicine (MD)	7	10	5	12	10	43%
Vet. Med (DVM)	18	14	23	27	57	217%
Total MU Full-time Non-Resident 1st Professional	45	62	66	79	98	118%
Graduate						
Masters & Ed. Spec.	588	646	664	678	714	21%
Doctoral	648	643	626	671	709	9%
Nondegree	23	26	21	25	17	-26%
Total MU Full-time Non-Resident Graduate	1,259	1,315	1,311	1,374	1,440	14%
Total MU Full-time Non-Resident Headcount	4,210	4,293	4,445	5,016	5,514	31%
UNIVERSITY OF MISSOURI-COLUMBIA PART-TIME NON-RESIDENT HEADCOUNT						
Undergraduate						
Freshman & Soph DS	32	41	54	60	80	150%
Junior & Senior DS	61	56	79	81	69	13%
Nondegree	56	43	13	68	39	-30%
Total MU Part-time Non-Resident Undergraduate	149	140	146	209	188	26%
First Professional						
Law (JD)	0	1	2	1	0	
Medicine (MD)	2	0	0	0	0	
Vet. Med (DVM)		0	0	0	0	
Total MU Part-time Non-Resident 1st Professional	2	1	2	1	0	
Graduate						
Masters & Ed. Spec.	384	394	433	479	517	35%
Doctoral	432	464	476	480	493	14%
Nondegree	125	145	98	142	123	-2%
Total MU Part-time Non-Resident Graduate	941	1,003	1,007	1,101	1,133	20%
Total MU Part-time Non-Resident Headcount	1,092	1,144	1,155	1,311	1,321	21%
UNIVERSITY OF MISSOURI-COLUMBIA TOTAL NON-RESIDENT HEADCOUNT						
Undergraduate						
Freshman & Soph DS	1,835	1,831	1,918	2,325	2,738	49%
Junior & Senior DS	1,135	1,150	1,248	1,330	1,343	18%
Nondegree	85	75	48	117	83	-2%
Total MU Non-Resident Undergraduate	3,055	3,056	3,214	3,772	4,164	36%
First Professional						
Law (JD)	20	39	40	41	31	55%
Medicine (MD)	9	10	5	12	10	11%
Vet. Med (DVM)	18	14	23	27	57	217%
Total MU Non-Resident 1st Professional	47	63	68	80	98	109%
Graduate						
Masters & Ed. Spec.	972	1,040	1,097	1,157	1,231	27%
Doctoral	1,080	1,107	1,102	1,151	1,202	11%
Nondegree	148	171	119	167	140	-5%
Total MU Non-Resident Graduate	2,200	2,318	2,318	2,475	2,573	17%
Grand Total MU Non-Resident Headcount	5,302	5,437	5,600	6,327	6,835	29%

Table 4.2a Resident Headcount History by Student Level, Load, and Campus, Fall 2005 to Fall 2009

Level	2005	2006	2007	2008	2009	5 yr. Change
UNIVERSITY OF MISSOURI-KANSAS CITY FULL-TIME RESIDENT HEADCOUNT						
Undergraduate						
Freshman & Soph DS	1,956	1,948	1,962	1,987	2,067	6%
Junior & Senior DS	2,215	2,144	2,035	2,226	2,421	9%
Nondegree	17	10	27	17	6	-65%
Total UMKC Full-time Resident Undergraduate	4,188	4,102	4,024	4,230	4,494	7%
First Professional						
Dentistry (DDS)	239	252	265	276	286	20%
Law (JD)	389	374	367	378	388	0%
Medicine (MD)	259	247	271	277	274	6%
Pharmacy (Dpharm)	228	225	252	278	320	40%
Total UMKC Full-time Resident 1st Professional	1,115	1,098	1,155	1,209	1,268	14%
Graduate						
Masters & Ed. Spec.	515	479	439	435	492	-4%
Doctoral	43	49	41	45	34	-21%
Nondegree	8	5	3	2	18	125%
Total UMKC Full-time Resident Graduate	566	533	483	482	544	-4%
Total UMKC Full-time Resident Headcount	5,869	5,733	5,662	5,921	6,306	7%
UNIVERSITY OF MISSOURI-KANSAS CITY PART-TIME RESIDENT HEADCOUNT						
Undergraduate						
Freshman & Soph DS	240	236	304	278	270	13%
Junior & Senior DS	792	791	768	857	817	3%
Nondegree	2,281	2,142	1,997	1,759	1,499	-34%
Total UMKC Part-time Resident Undergraduate	3,313	3,169	3,069	2,894	2,586	-22%
First Professional						
Law (JD)	10	22	26	19	22	120%
Total UMKC Part-time Resident 1st Professional	10	22	26	19	22	120%
Graduate						
Masters & Ed. Spec.	1,036	1,019	1,090	1,073	1,110	7%
Doctoral	172	152	168	204	216	26%
Nondegree	124	174	497	226	221	78%
Total UMKC Part-time Resident Graduate	1,332	1,345	1,755	1,503	1,547	16%
Total UMKC Part-time Resident Headcount	4,655	4,536	4,850	4,416	4,155	-11%
UNIVERSITY OF MISSOURI-KANSAS CITY TOTAL RESIDENT HEADCOUNT						
Undergraduate						
Freshman & Soph DS	2,196	2,184	2,266	2,265	2,337	6%
Junior & Senior DS	3,007	2,935	2,803	3,083	3,238	8%
Nondegree	2,298	2,152	2,024	1,776	1,505	-35%
Total UMKC Resident Undergraduate	7,501	7,271	7,093	7,124	7,080	-6%
First Professional						
Dentistry (DDS)	239	252	265	276	286	20%
Law (JD)	399	396	393	397	410	3%
Medicine (MD)	259	247	271	277	274	6%
Pharmacy (Dpharm)	228	225	252	278	320	40%
Total UMKC Resident 1st Professional	1,125	1,120	1,181	1,228	1,290	15%
Graduate						
Masters & Ed. Spec.	1,551	1,498	1,529	1,508	1,602	3%
Doctoral	215	201	209	249	250	16%
Nondegree	132	179	500	228	239	81%
Total UMKC Resident Graduate	1,898	1,878	2,238	1,985	2,091	10%
Grand Total UMKC Resident Headcount	10,524	10,269	10,512	10,337	10,461	-1%

Table 4.2b Non-Resident Headcount History by Student Level, Load, and Campus, Fall 2005 to Fall 2009

Level	2005	2006	2007	2008	2009	5 yr. Change
UNIVERSITY OF MISSOURI-KANSAS CITY FULL-TIME NON-RESIDENT HEADCOUNT						
Undergraduate						
Freshman & Soph DS	597	627	650	658	712	19%
Junior & Senior DS	878	941	839	933	1,012	15%
Nondegree	13	17	24	41	46	254%
Total UMKC Full-time Non-Resident Undergraduate	1,488	1,585	1,513	1,632	1,770	19%
First Professional						
Dentistry (DDS)	149	141	136	123	115	-23%
Law (JD)	123	113	99	86	81	-34%
Medicine (MD)	105	116	113	103	110	5%
Pharmacy (Dpharm)	15	13	13	20	19	27%
Total UMKC Full-time Non-Resident 1st Professional	392	383	361	332	325	-17%
Graduate						
Masters & Ed. Spec.	444	512	549	580	556	25%
Doctoral	99	100	105	152	150	52%
Nondegree	0	5	1	2	6	
Total UMKC Full-time Non-Resident Graduate	543	617	655	734	712	31%
Total UMKC Full-time Non-Resident Headcount	2,423	2,585	2,529	2,698	2,807	16%
UNIVERSITY OF MISSOURI-KANSAS CITY PART-TIME NON-RESIDENT HEADCOUNT						
Undergraduate						
Freshman & Soph DS	72	69	126	93	77	7%
Junior & Senior DS	315	311	291	318	345	10%
Nondegree	111	147	71	94	109	-2%
Total UMKC Part-time Non-Resident Undergraduate	498	527	488	505	531	7%
First Professional						
Law (JD)	6	6	6	9	8	33%
Total UMKC Part-time Non-Resident 1st Professional	6	6	6	9	8	33%
Graduate						
Masters & Ed. Spec.	575	562	599	635	675	17%
Doctoral	229	221	222	230	256	12%
Nondegree	51	43	86	67	61	20%
Total UMKC Part-time Non-Resident Graduate	855	826	907	932	992	16%
Total UMKC Part-time Non-Resident Headcount	1,359	1,359	1,401	1,446	1,531	13%
UNIVERSITY OF MISSOURI-KANSAS CITY TOTAL NON-RESIDENT HEADCOUNT						
Undergraduate						
Freshman & Soph DS	669	696	776	751	789	18%
Junior & Senior DS	1,193	1,252	1,130	1,251	1,357	14%
Nondegree	124	164	95	135	155	25%
Total UMKC Non-Resident Undergraduate	1,986	2,112	2,001	2,137	2,301	16%
First Professional						
Dentistry (DDS)	149	141	136	123	115	-23%
Law (JD)	129	119	105	95	89	-31%
Medicine (MD)	105	116	113	103	110	5%
Pharmacy (Dpharm)	15	13	13	20	19	27%
Total UMKC Non-Resident 1st Professional	398	389	367	341	333	-16%
Graduate						
Masters & Ed. Spec.	1,019	1,074	1,148	1,215	1,231	21%
Doctoral	328	321	327	382	406	24%
Nondegree	51	48	87	69	67	31%
Total UMKC Non-Resident Graduate	1,398	1,443	1,562	1,666	1,704	22%
Grand Total UMKC Non-Resident Headcount	3,782	3,944	3,930	4,144	4,338	15%

Table 4.3a Resident Headcount History by Student Level, Load, and Campus, Fall 2005 to Fall 2009

Level	2005	2006	2007	2008	2009	5 yr. Change
MISSOURI S&T FULL-TIME RESIDENT HEADCOUNT						
Undergraduate						
Freshman & Soph DS	1,453	1,497	1,607	1,650	1,760	21%
Junior & Senior DS	1,677	1,825	1,923	2,012	2,114	26%
Nondegree	6	6	1	4	1	-83%
Total MO S&T Full-time Resident Undergraduate	3,136	3,328	3,531	3,666	3,875	24%
Graduate						
Masters & Ed. Spec.	141	132	137	118	158	12%
Doctoral	67	66	84	75	75	12%
Nondegree	0	1	0	0	0	
Total MO S&T Full-time Resident Graduate	208	199	221	193	233	12%
Total Missouri S&T Full-time Resident Headcount	3,344	3,527	3,752	3,859	4,108	23%
MISSOURI S&T PART-TIME RESIDENT HEADCOUNT						
Undergraduate						
Freshman & Soph DS	53	52	62	57	70	32%
Junior & Senior DS	239	244	223	229	230	-4%
Nondegree	65	41	38	22	38	-42%
Total MO S&T Part-time Resident Undergraduate	357	337	323	308	338	-5%
Graduate						
Masters & Ed. Spec.	201	219	243	261	222	10%
Doctoral	27	33	30	43	38	41%
Nondegree	14	6	7	15	12	-14%
Total MO S&T Part-time Resident Graduate	242	258	280	319	272	12%
Total Missouri S&T Part-time Resident Headcount	599	595	603	627	610	2%
MISSOURI S&T TOTAL RESIDENT HEADCOUNT						
Undergraduate						
Freshman & Soph DS	1,506	1,549	1,669	1,707	1,830	22%
Junior & Senior DS	1,916	2,069	2,146	2,241	2,344	22%
Nondegree	71	47	39	26	39	-45%
Total MO S&T Resident Undergraduate	3,493	3,665	3,854	3,974	4,213	21%
Graduate						
Masters & Ed. Spec.	342	351	380	379	380	11%
Doctoral	94	99	114	118	113	20%
Nondegree	14	7	7	15	12	-14%
Total MO S&T Resident Graduate	450	457	501	512	505	12%
Grand Total Missouri S&T Resident Headcount	3,943	4,122	4,355	4,486	4,718	20%

Table 4.3b Non-Resident Headcount History by Student Level, Load, and Campus, Fall 2005 to Fall 2009

Level	2005	2006	2007	2008	2009	5 yr. Change
MISSOURI S&T FULL-TIME NON-RESIDENT HEADCOUNT						
Undergraduate						
Freshman & Soph DS	395	406	446	459	463	17%
Junior & Senior DS	357	364	397	419	459	29%
Nondegree	4	0	1	4	10	150%
Total MO S&T Full-time Non-Resident Undergraduate	756	770	844	882	932	23%
Graduate						
Masters & Ed. Spec.	328	336	362	352	438	34%
Doctoral	234	211	185	212	281	20%
Nondegree	1	1	0	1	0	-100%
Total MO S&T Full-time Non-Resident Graduate	563	548	547	565	719	28%
Total Missouri S&T Full-time Non-Resident Headcount	1,319	1,318	1,391	1,447	1,651	25%
MISSOURI S&T PART-TIME NON-RESIDENT HEADCOUNT						
Undergraduate						
Freshman & Soph DS	14	38	12	14	11	-21%
Junior & Senior DS	31	39	35	35	38	23%
Nondegree	17	3	7	6	12	-29%
Total MO S&T Part-time Non-Resident Undergraduate	62	80	54	55	61	-2%
Graduate						
Masters & Ed. Spec.	227	287	317	339	350	54%
Doctoral	41	40	45	34	30	-27%
Nondegree	8	11	4	6	4	-50%
Total MO S&T Part-time Non-Resident Graduate	276	338	366	379	384	39%
Total Missouri S&T Part-time Non-Resident Headcount	338	418	420	434	445	32%
MISSOURI S&T TOTAL NON-RESIDENT HEADCOUNT						
Undergraduate						
Freshman & Soph DS	409	444	458	473	474	16%
Junior & Senior DS	388	403	432	454	497	28%
Nondegree	21	3	8	10	22	5%
Total MO S&T Non-Resident Undergraduate	818	850	898	937	993	21%
Graduate						
Masters & Ed. Spec.	555	623	679	691	788	42%
Doctoral	275	251	230	246	311	13%
Nondegree	9	12	4	7	4	-56%
Total MO S&T Non-Resident Graduate	839	886	913	944	1,103	31%
Grand Total Missouri S&T Non-Resident Headcount	1,657	1,736	1,811	1,881	2,096	26%

Table 4.4a Resident Headcount History by Student Level, Load, and Campus, Fall 2005 to Fall 2009

Level	2005	2006	2007	2008	2009	5 yr. Change
UNIVERSITY OF MISSOURI-ST. LOUIS FULL-TIME RESIDENT HEADCOUNT						
Undergraduate						
Freshman & Soph DS	1,521	1,504	1,497	1,664	1,588	4%
Junior & Senior DS	3,621	3,521	3,651	3,351	3,612	0%
Nondegree	91	107	101	107	117	29%
Total UMSL Full-time Resident Undergraduate	5,233	5,132	5,249	5,122	5,317	2%
First Professional						
Optometry (OD)	87	83	86	89	86	-1%
Total UMSL Full-time Resident 1st Professional	87	83	86	89	86	-1%
Graduate						
Masters & Ed. Spec.	381	361	401	429	470	23%
Doctoral	48	65	59	59	59	23%
Nondegree	8	4	16	16	21	163%
Total UMSL Full-time Resident Graduate	437	430	476	504	550	26%
Total UMSL Full-time Resident Headcount	5,757	5,645	5,811	5,715	5,953	3%
UNIVERSITY OF MISSOURI-ST. LOUIS PART-TIME RESIDENT HEADCOUNT						
Undergraduate						
Freshman & Soph DS	428	437	379	499	462	8%
Junior & Senior DS	2,767	2,593	2,570	2,358	2,422	-12%
Nondegree	3,271	3,397	3,305	3,483	3,845	18%
Total UMSL Part-time Resident Undergraduate	6,466	6,427	6,254	6,340	6,729	4%
First Professional						
Optometry (OD)	0	0	0	0	0	
Total UMSL Part-time Resident 1st Professional	0	0	0	0	0	
Graduate						
Masters & Ed. Spec.	1,559	1,578	1,522	1,607	1,773	14%
Doctoral	255	260	282	291	321	26%
Nondegree	79	93	93	195	211	167%
Total UMSL Part-time Resident Graduate	1,893	1,931	1,897	2,093	2,305	22%
Total UMSL Part-time Resident Headcount	8,359	8,358	8,151	8,433	9,034	8%
UNIVERSITY OF MISSOURI-ST. LOUIS TOTAL RESIDENT HEADCOUNT						
Undergraduate						
Freshman & Soph DS	1,949	1,941	1,876	2,163	2,050	5%
Junior & Senior DS	6,388	6,114	6,221	5,709	6,034	-6%
Nondegree	3,362	3,504	3,406	3,590	3,962	18%
Total UMSL Resident Undergraduate	11,699	11,559	11,503	11,462	12,046	3%
First Professional						
Optometry (OD)	87	83	86	89	86	-1%
Total UMSL Resident 1st Professional	87	83	86	89	86	-1%
Graduate						
Masters & Ed. Spec.	1,940	1,939	1,923	2,036	2,243	16%
Doctoral	303	325	341	350	380	25%
Nondegree	87	97	109	211	232	167%
Total UMSL Resident Graduate	2,330	2,361	2,373	2,597	2,855	23%
Grand Total UMSL Resident Headcount	14,116	14,003	13,962	14,148	14,987	6%

Table 4.4b Non-Resident Headcount History by Student Level, Load, and Campus, Fall 2005 to Fall 2009

Level	2005	2006	2007	2008	2009	5 yr. Change
UNIVERSITY OF MISSOURI-ST. LOUIS FULL-TIME NON-RESIDENT HEADCOUNT						
Undergraduate						
Freshman & Soph DS	193	228	231	267	286	48%
Junior & Senior DS	415	387	412	353	383	-8%
Nondegree	46	47	51	57	42	-9%
Total UMSL Full-time Non-Resident Undergraduate	654	662	694	677	711	9%
First Professional						
Optometry (OD)	77	90	85	89	93	21%
Total UMSL Full-time Non-Resident 1st Professional	77	90	85	89	93	21%
Graduate						
Masters & Ed. Spec.	135	203	202	164	167	24%
Doctoral	83	65	66	73	68	-18%
Nondegree	5	2	6	9	8	60%
Total UMSL Full-time Non-Resident Graduate	223	270	274	246	243	9%
Total UMSL Full-time Non-Resident Headcount	954	1,022	1,053	1,012	1,047	10%
UNIVERSITY OF MISSOURI-ST. LOUIS PART-TIME NON-RESIDENT HEADCOUNT						
Undergraduate						
Freshman & Soph DS	32	32	29	28	19	-41%
Junior & Senior DS	172	170	177	158	157	-9%
Nondegree	49	36	29	33	33	-33%
Total UMSL Part-time Non-Resident Undergraduate	253	238	235	219	209	-17%
First Professional						
Optometry (OD)	0	0	0	0	0	
Total UMSL Part-time Non-Resident 1st Professional	0	0	0	0	0	
Graduate						
Masters & Ed. Spec.	119	129	148	215	171	44%
Doctoral	99	125	121	96	105	6%
Nondegree	7	11	8	51	15	114%
Total UMSL Part-time Non-Resident Graduate	225	265	277	362	291	29%
Total UMSL Part-time Non-Resident Headcount	478	503	512	581	500	5%
UNIVERSITY OF MISSOURI-ST. LOUIS TOTAL NON-RESIDENT HEADCOUNT						
Undergraduate						
Freshman & Soph DS	225	260	260	295	305	36%
Junior & Senior DS	587	557	589	511	540	-8%
Nondegree	95	83	80	90	75	-21%
Total UMSL Non-Resident Undergraduate	907	900	929	896	920	1%
First Professional						
Optometry (OD)	77	90	85	89	93	21%
Total UMSL Non-Resident 1st Professional	77	90	85	89	93	21%
Graduate						
Masters & Ed. Spec.	254	332	350	379	338	33%
Doctoral	182	190	187	169	173	-5%
Nondegree	12	13	14	60	23	92%
Total UMSL Non-Resident Graduate	448	535	551	608	534	19%
Grand Total UMSL Non-Resident Headcount	1,432	1,525	1,565	1,593	1,547	8%

Table 5. Headcount Students by Gender and Ethnicity

Data - Classification	<u>MU</u>		<u>UMKC</u>		<u>MO S&T</u>		<u>UMSL</u>		<u>TOTAL</u>	
	HC	%	HC	%	HC	%	HC	%	HC	%
A. Gender										
Men										
First-time DS Freshmen	2,583	46%	379	38%	848	77%	209	40%	4,019	49%
Other Undergraduate	8,853	49%	3,527	42%	3,197	78%	4,848	39%	20,425	47%
First Professional	541	47%	827	51%	0	-	77	43%	1,445	49%
Graduate	<u>2,546</u>	40%	<u>1,634</u>	43%	<u>1,285</u>	80%	<u>1,177</u>	35%	<u>6,642</u>	44%
Total	14,523	46%	6,367	43%	5,330	78%	6,311	38%	32,531	47%
Women										
First-time DS Freshmen	3,006	54%	625	62%	260	23%	316	60%	4,207	51%
Other Undergraduate	9,357	51%	4,850	58%	901	22%	7,593	61%	22,701	53%
First Professional	609	53%	784	49%	0	-	102	57%	1,495	51%
Graduate	<u>3,742</u>	60%	<u>2,173</u>	57%	<u>323</u>	20%	<u>2,212</u>	65%	<u>8,450</u>	56%
Total	16,714	54%	8,432	57%	1,484	22%	10,223	62%	36,853	53%
Grand Total	31,237		14,799		6,814		16,534		69,384	

Table 5. Headcount Students by Gender and Ethnicity (continued)

Data - Classification	MU		UMKC		MO S&T		UMSL		TOTAL	
	HC	%	HC	%	HC	%	HC	%	HC	%
B. Ethnicity *										
Am Indian/Alaskan Native										
First-time DS Freshmen	27	0%	5	1%	9	1%	4	1%	45	1%
Other Undergraduate	111	1%	51	1%	29	1%	34	0%	225	1%
First Professional	9	1%	8	1%	0	-	1	1%	18	1%
Graduate	<u>29</u>	0%	<u>8</u>	0%	<u>6</u>	0%	<u>16</u>	1%	<u>59</u>	0%
Total	176	1%	72	1%	44	1%	55	0%	347	1%
Asian/Pacific Islander										
First-time DS Freshmen	120	2%	89	10%	22	2%	19	4%	250	3%
Other Undergraduate	462	3%	408	5%	100	3%	374	3%	1,344	3%
First Professional	54	5%	218	15%	0	-	14	9%	286	11%
Graduate	<u>118</u>	2%	<u>99</u>	3%	<u>52</u>	3%	<u>74</u>	2%	<u>343</u>	2%
Total	754	3%	814	6%	174	3%	481	3%	2,223	3%
African-American Non-Hispanic										
First-time DS Freshmen	482	9%	178	19%	49	5%	139	29%	848	11%
Other Undergraduate	1,183	7%	1,156	16%	235	6%	1,921	17%	4,495	11%
First Professional	43	4%	65	5%	0	-	9	6%	117	4%
Graduate	<u>216</u>	4%	<u>314</u>	9%	<u>68</u>	4%	<u>437</u>	14%	<u>1,035</u>	7%
Total	1,924	6%	1,713	13%	352	5%	2,506	17%	6,495	10%
Hispanic										
First-time DS Freshmen	151	3%	54	6%	25	2%	4	1%	234	3%
Other Undergraduate	381	2%	371	5%	82	2%	203	2%	1,037	3%
First Professional	25	2%	47	3%	0	-	2	1%	74	3%
Graduate	<u>117</u>	2%	<u>108</u>	3%	<u>42</u>	3%	<u>60</u>	2%	<u>327</u>	2%
Total	674	2%	580	4%	149	2%	269	2%	1,672	3%
White Non-Hispanic										
First-time DS Freshmen	4,545	84%	581	62%	909	88%	278	58%	6,313	80%
Other Undergraduate	15,134	86%	5,172	70%	3,324	84%	8,551	75%	32,181	80%
First Professional	941	88%	1,074	75%	0	-	132	81%	2,147	81%
Graduate	<u>4,371</u>	73%	<u>2,309</u>	65%	<u>752</u>	48%	<u>2,188</u>	72%	<u>9,620</u>	68%
Total	24,991	83%	9,136	69%	4,985	76%	11,149	74%	50,261	77%
Nonresident Alien										
First-time DS Freshmen	78	1%	29	3%	19	2%	34	7%	160	2%
Other Undergraduate	400	2%	272	4%	166	4%	261	2%	1,099	3%
First Professional	2	0%	13	1%	0	-	4	2%	19	1%
Graduate	<u>1,134</u>	19%	<u>697</u>	20%	<u>634</u>	41%	<u>248</u>	8%	<u>2,713</u>	19%
Total	1,614	5%	1,011	8%	819	13%	547	4%	3,991	6%
Grand Total	30,133		13,326		6,523		15,007		64,989	

* Note: Students not reporting ethnicity (Unknown) were removed from the distribution.

Unknown

First-time DS Freshmen	186	68	75	376
Other Undergraduate	539	947	162	2,745
First Professional	76	186	0	279
Graduate	<u>303</u>	<u>272</u>	<u>54</u>	<u>995</u>
Total	1,104	1,473	291	4,395

Source: EMSAS Fall Enrollment file

IR&P/LCB 10/09