

**ENROLLMENT SUMMARY REPORT
FALL 2007**

Dr. La Shonda Carter-Boone
Senior Institutional Research Analyst

Office of Institutional Research & Planning
722 Lewis Hall
University of Missouri System

March 2008

IR&P 2008, Report 1

<http://www.umsystem.edu/ums/departments/fa/planning/>

FALL 2007 ENROLLMENT SUMMARY

Executive Summary

This report summarizes the status and trends in fall enrollment at the University of Missouri's four campuses. The report includes information about enrollment, full-time equivalence, new students on campus, undergraduate transfer students, full/part-time status, gender and ethnicity information.

Please note that enrollment totals in this report follow federal and state guidelines, which recommend that students who are classified as "exclusive auditors" are not included in enrollment figures. Consequently, students who are classified as "exclusive auditors" are not included in the campus totals. (Exclusive auditors are defined as students who are enrolled exclusively in courses that are not taken for credit.)

Highlights of the report include:

- The University of Missouri System enrolled a record 64,540 students in Fall 2007, 757 more students than the record 63,783 students that enrolled in Fall 2006. Total enrollment at the University has increased by 19% over the past 10 years (Table 1).
- In Fall 2007, the University of Missouri enrolled 47,864 undergraduate students (74% of total headcount), 2,830 first professional students (4%), and 13,846 graduate students (21%) (Table 1).
- Over the past 10 years, undergraduate headcount has increased by 17%, first-professional headcount by 8% and graduate headcount by 32% (Table 1).
- Since 2003, total student credit hours and total full-time equivalence have both increased by 7%. (Table 2.0).
- Over the past five years, total full-time resident headcount has increased 6% (table 4.0a) and total full-time non-resident headcount has increased 15% (table 4.0b).
- Women comprised 53% of total enrollment in Fall 2007. UM-St. Louis had the largest percentage of women (60%) and MO S&T had the highest proportion of men (77%) (Table 5).
- Of all the students of known ethnicity, under-represented minorities (American Indian/Alaskan Native, African-American, and Hispanic) represented 12% of the University of Missouri System's total enrollment (Table 5).

Technical Notes

These tables provide counts of students enrolled in the fall of 2007 on-schedule credit courses at the four campuses of the University of Missouri. Five and ten-year trend data are included in the tables for comparison purposes. The data used in this report were generated from the EMSAS Fall Enrollment files, which are submitted to the Missouri Department of Higher Education (MDHE) each fall. Data included in EMSAS files were prepared in the admissions and registration offices at the respective campuses. The data are counts as of the census date at each campus, which is defined as the end of the fourth week of classes for the fall session. The source data are based on the reporting guidelines and definitions of the Missouri Department of Higher Education (MDHE) and the National Center for Educational Statistics (NCES).

Tables in the Table 2 series (2.0-2.4) include counts of on- and off-campus students. The columns titled "On-Campus", according to the MDHE guidelines, include students enrolled geographically on campus and students in the Graduate Engineering (Residence) Centers. All other students are counted in the columns headed "Off-Campus", which include students enrolled in extension courses and students that receive H.S. advanced credit from the Kansas City and St. Louis campuses. The tables of the Table 2 series also include full-time equivalence (FTE) counts.

Tables in the Table 4 series (4.0a-4.4b) include counts of resident and non-resident students by level and course load (full-time vs. part-time).

Definitions of FTE:

Undergraduate FTE = Total Student Credit Hours/15

Graduate FTE = Total Student Credit Hours/12

Dentistry FTE = Headcount

Law FTE = Total Student Credit Hours/15

UMC Medicine FTE = Headcount

UMKC Medicine FTE = Headcount

Optometry FTE = Headcount

Pharmacy FTE = Headcount

Vet Medicine FTE = Headcount

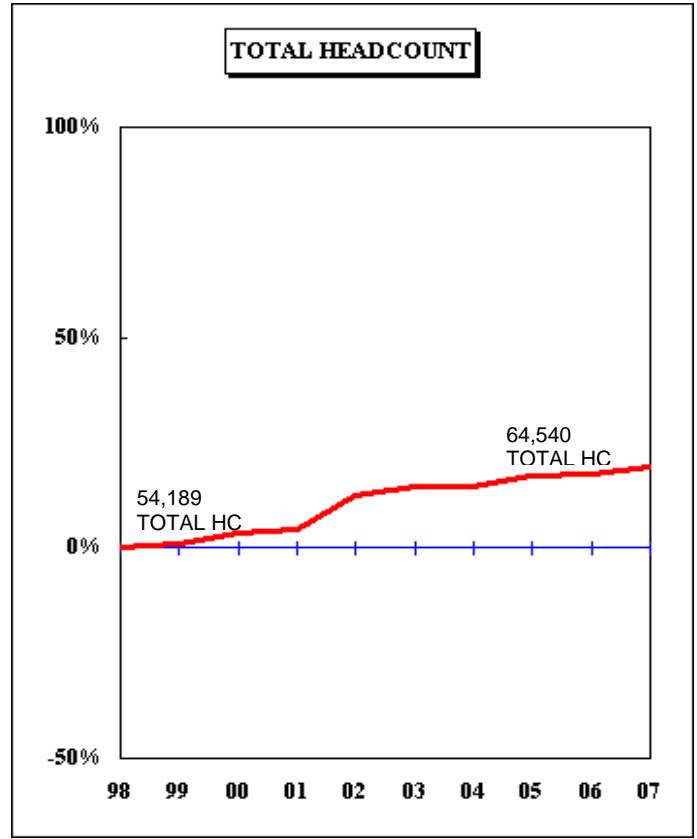
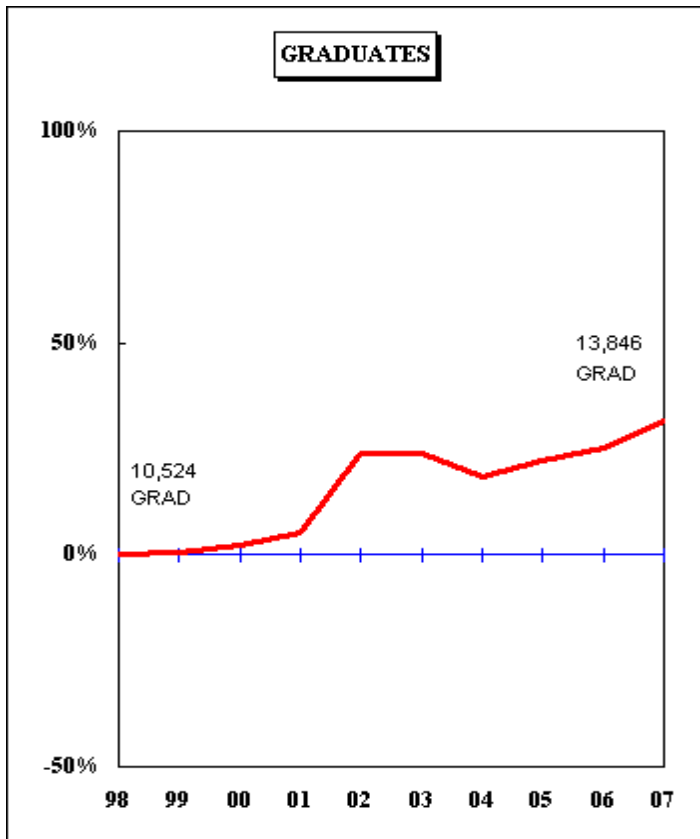
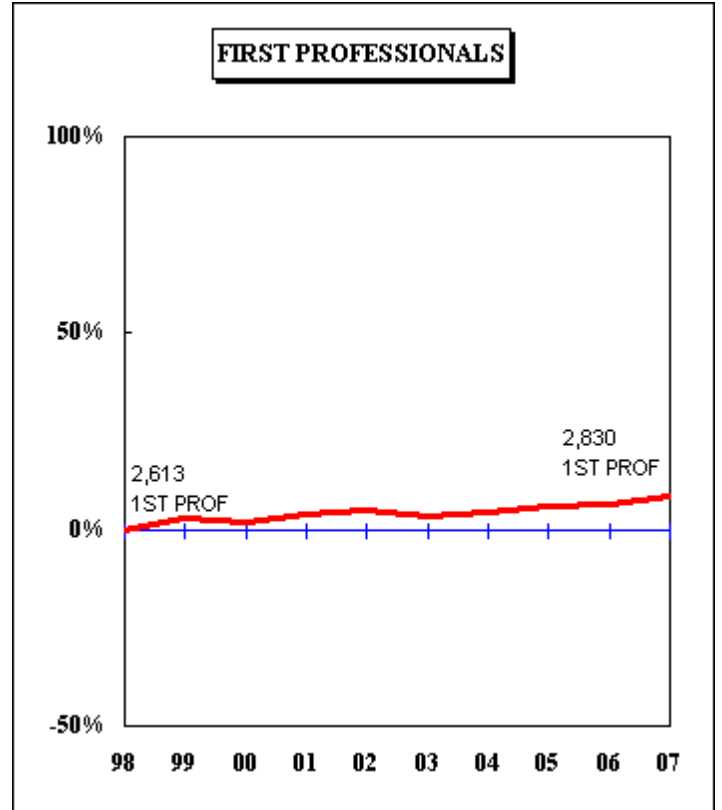
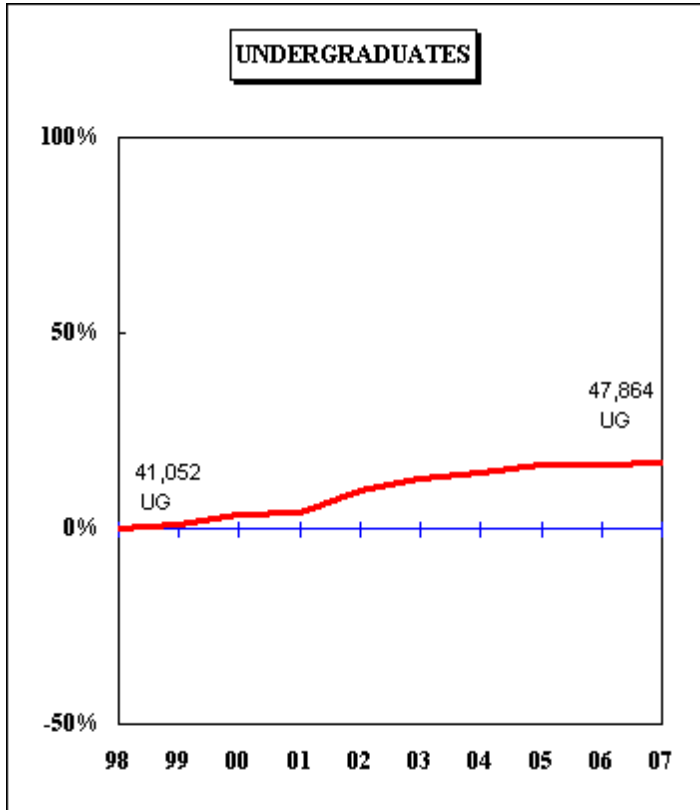
Caveats

First- and second-year students in the Medicine MD program at UMKC are included in the undergraduate counts of the Table 2 and Table 4 series.

Enrollment counts for students in "Off-Schedule" courses, which include intersession courses, short courses, Video Credit courses, and other courses which begin and end on dates other than those for the regular academic semester, are accumulated during the term in which the courses began and are reported the semester following their end date.

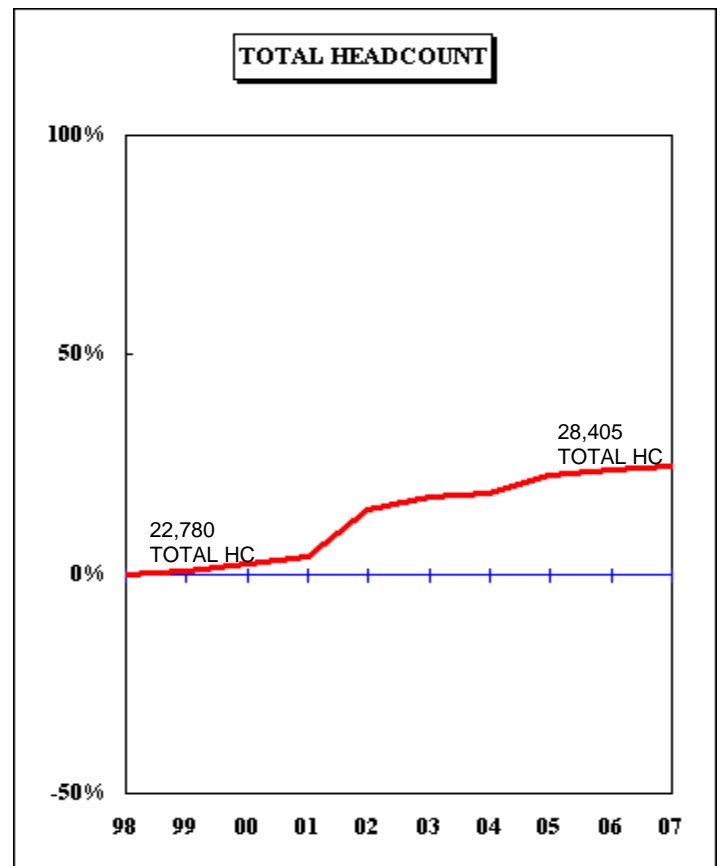
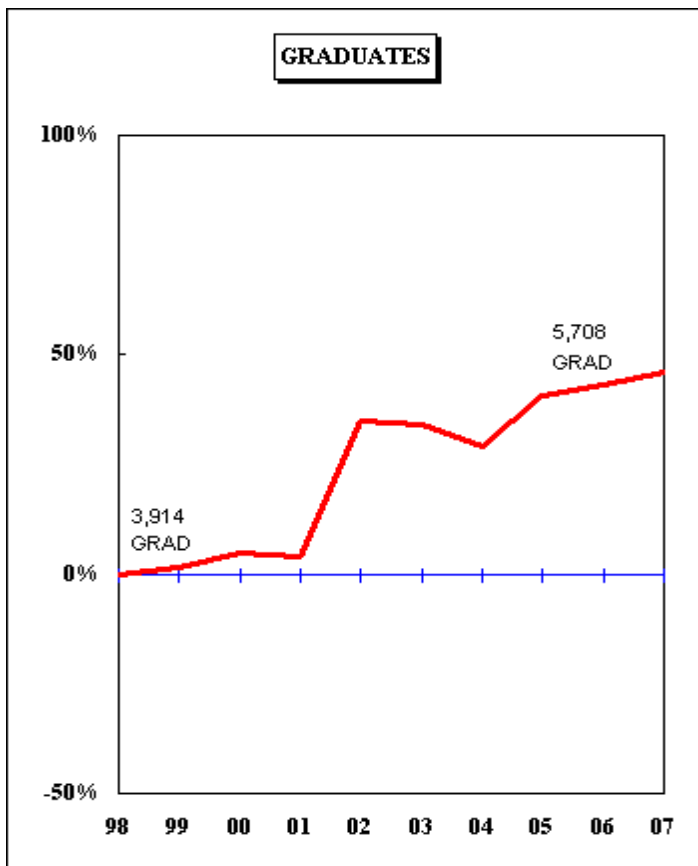
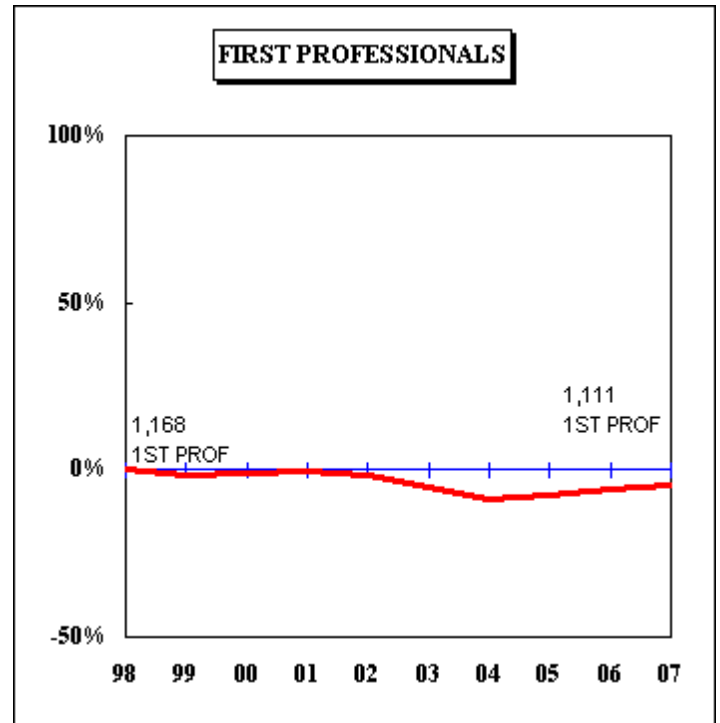
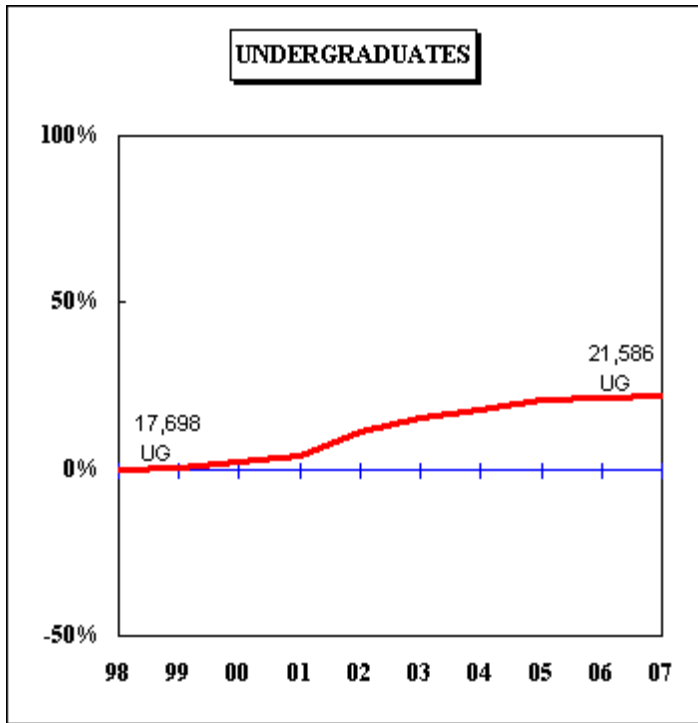
**Figure 1.0: Rate of Change in Fall Headcount by Student Level and Campus,
Fall 1998 to Fall 2007**

UNIVERSITY OF MISSOURI SYSTEM

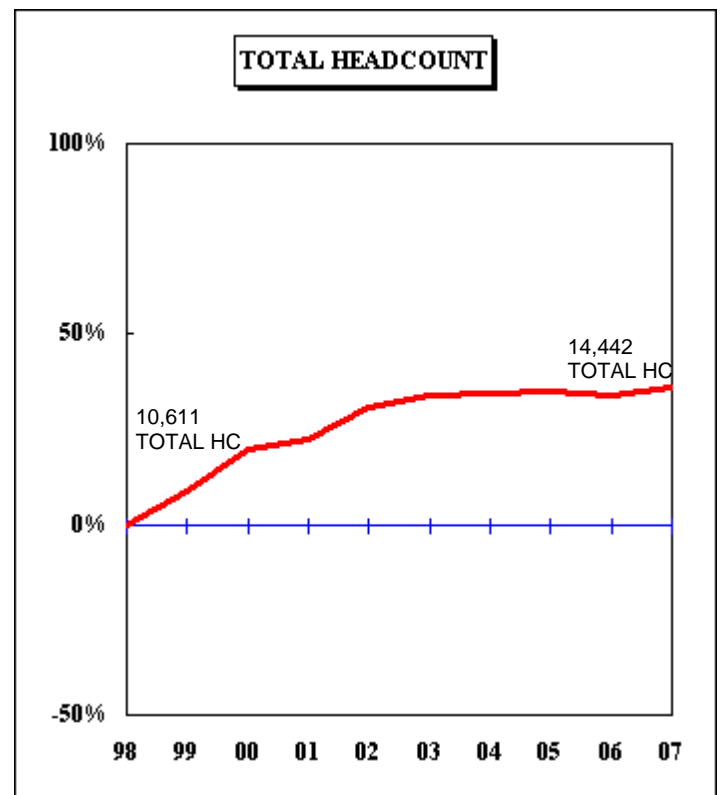
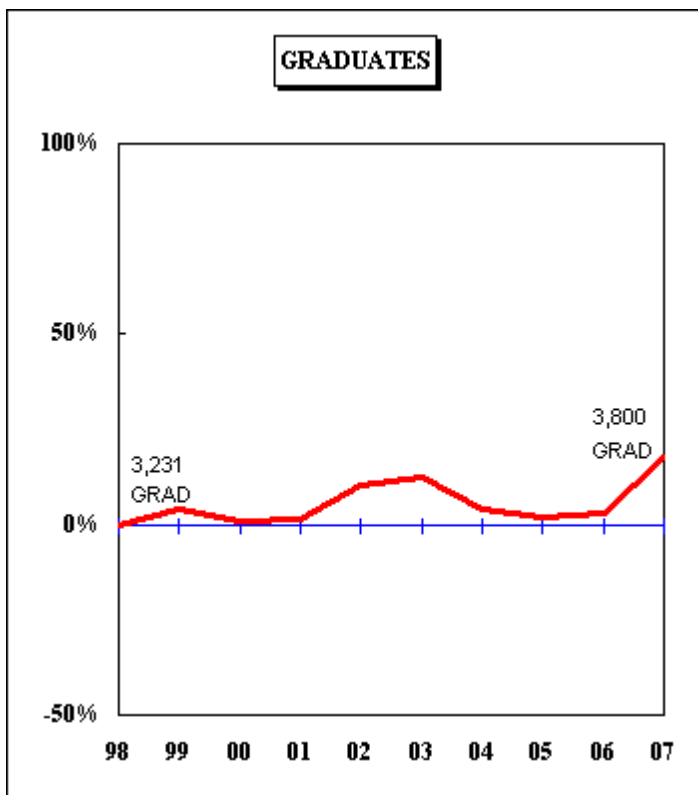
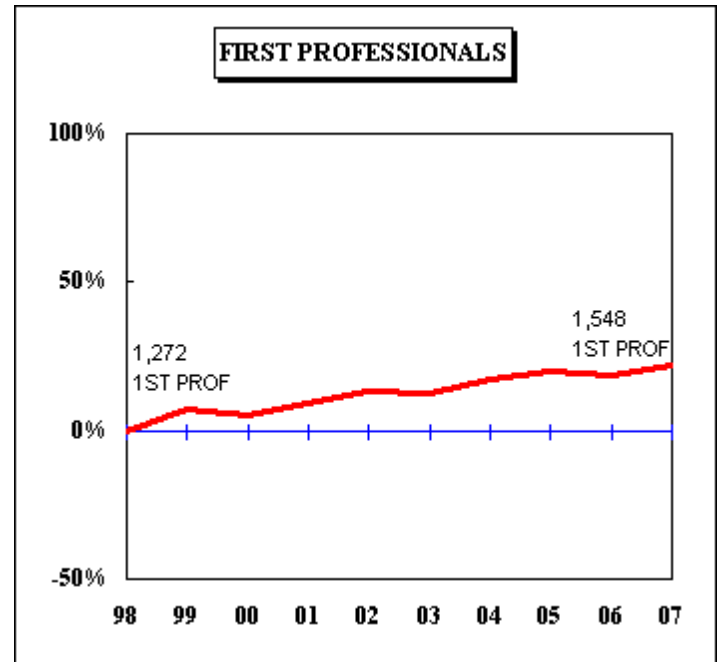
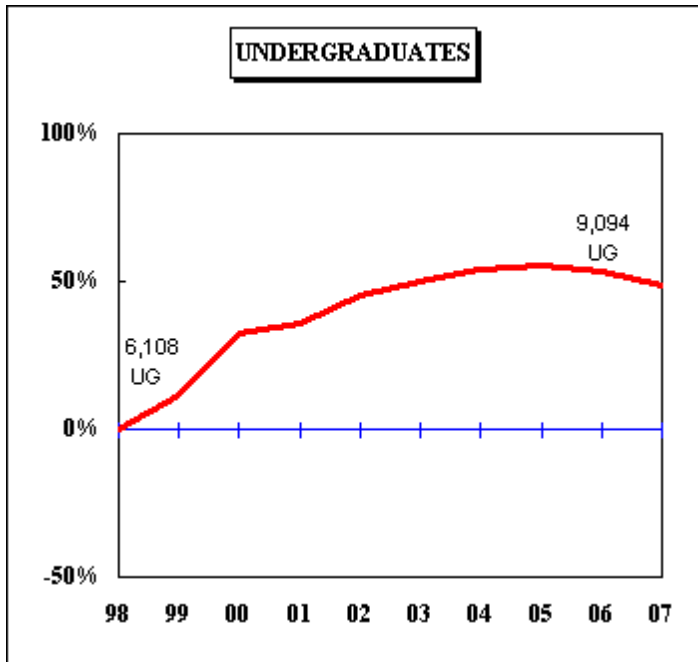


**Figure 1.1: Rate of Change in Fall Headcount by Student Level and Campus,
Fall 1998 to Fall 2007**

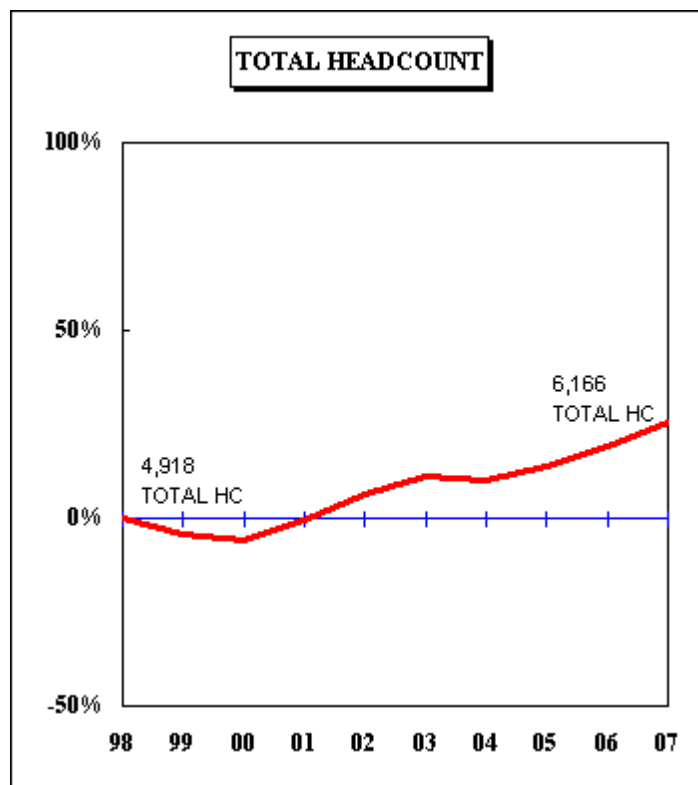
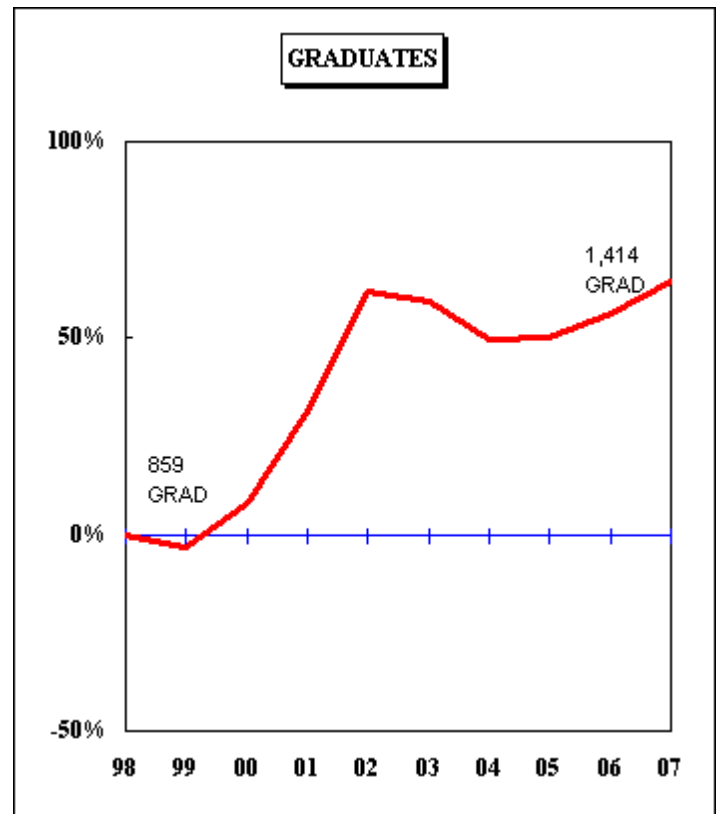
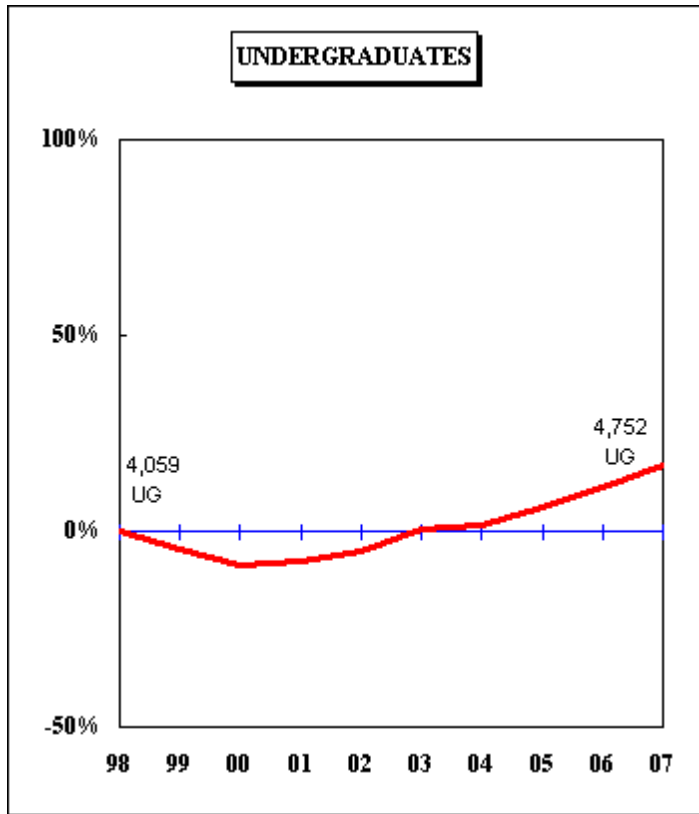
UNIVERSITY OF MISSOURI-COLUMBIA



**Figure 1.2: Rate of Change in Fall Headcount by Student Level and Campus,
Fall 1998 to Fall 2007**
UNIVERSITY OF MISSOURI-KANSAS CITY



**Figure 1.3: Rate of Change in Fall Headcount by Student Level and Campus,
Fall 1998 to Fall 2007
MISSOURI S&T**



**Figure 1.4: Rate of Change in Fall Headcount by Student Level and Campus,
Fall 1998 to Fall 2007**
UNIVERSITY OF MISSOURI-ST. LOUIS

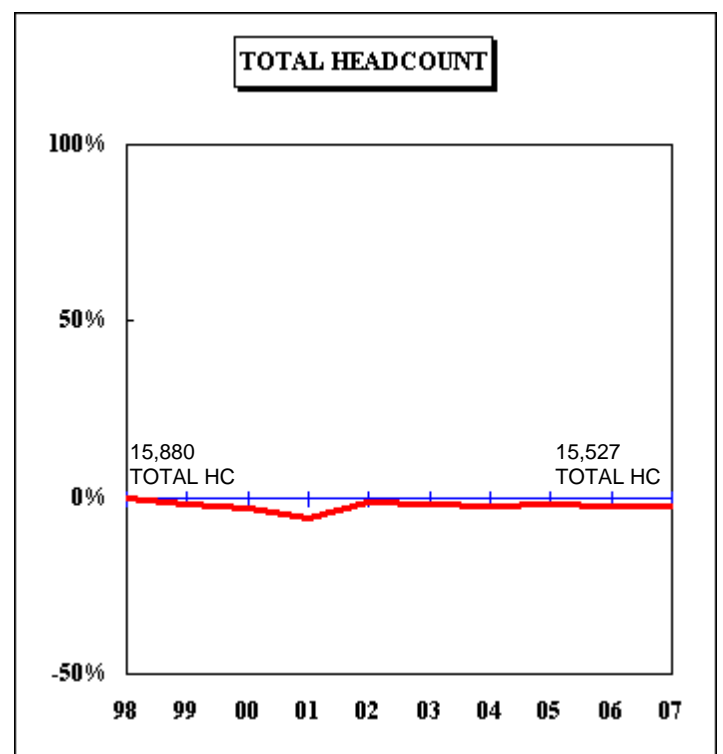
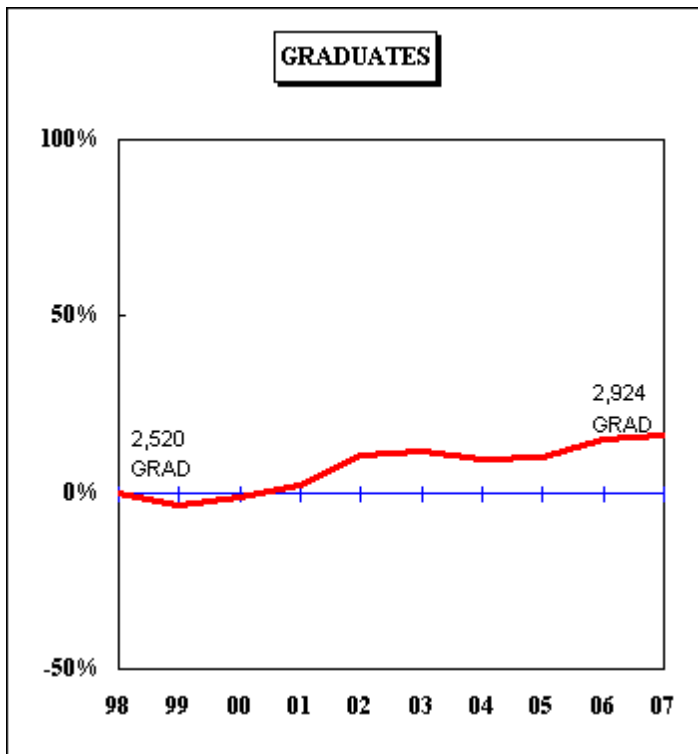
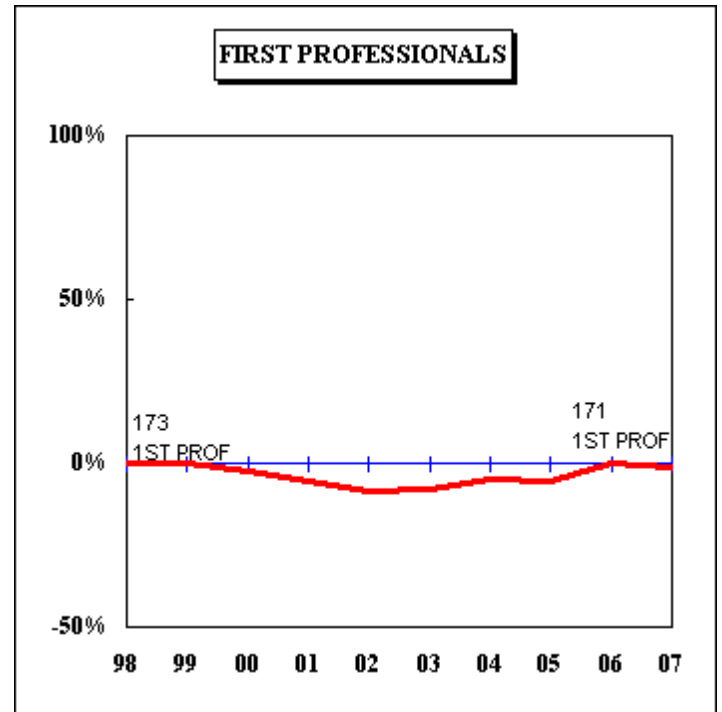
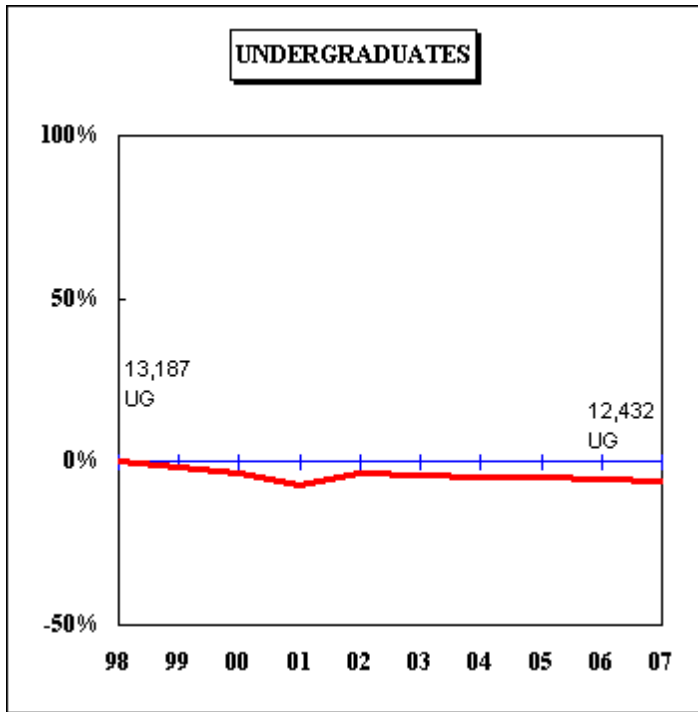
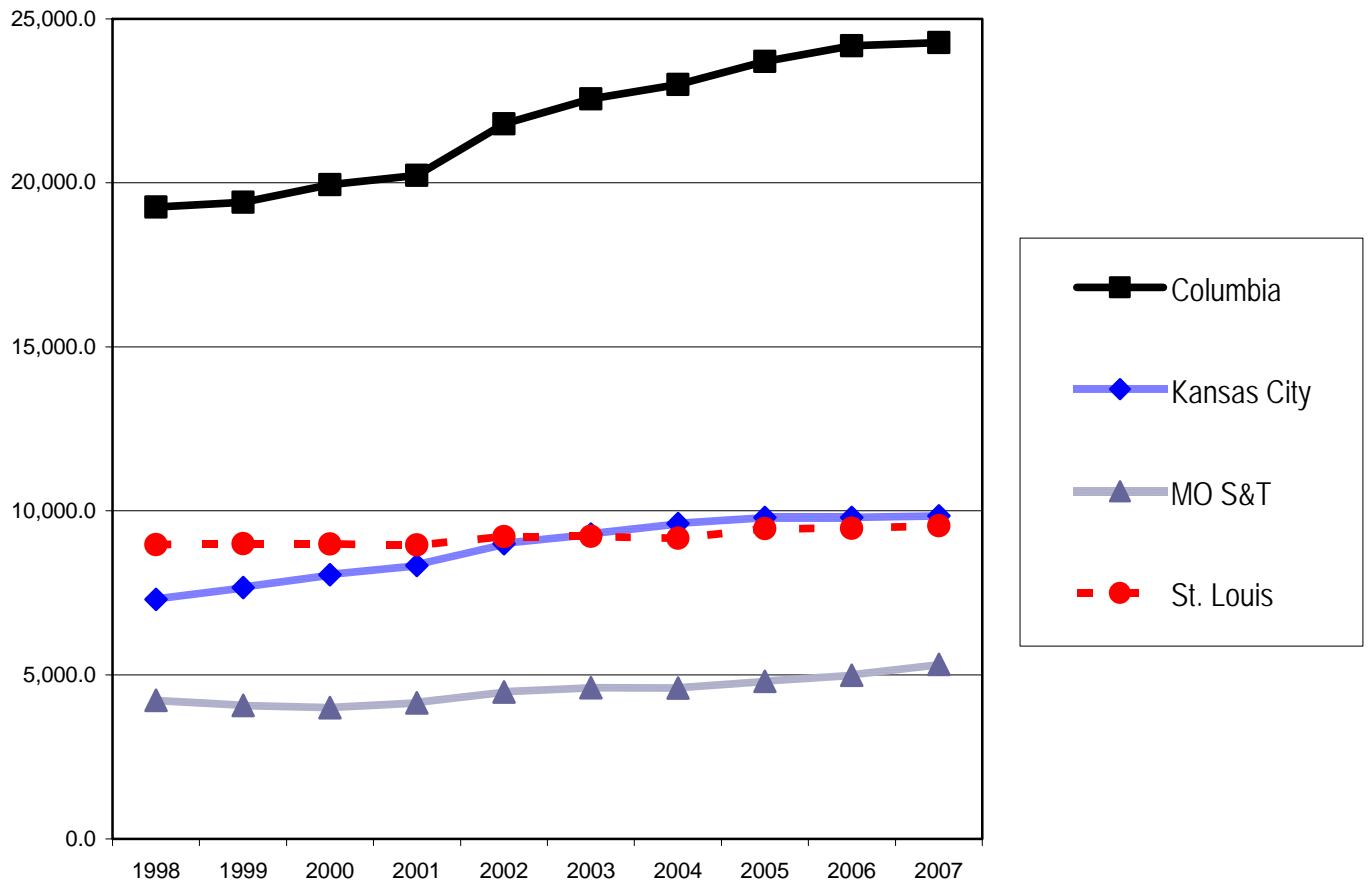


Table 1. Headcount History by Student Level and Campus, Fall 1998 to Fall 2007

Campus	Level	1998	1999	2000	2001	2002	2003	2004	2005	2006	2007	10 yr. Change
Columbia	Undergraduate	17,698	17,811	18,058	18,431	19,698	20,441	20,883	21,335	21,484	21,586	22%
	Professional	1,168	1,148	1,155	1,162	1,146	1,109	1,069	1,083	1,102	1,111	-5%
	Graduate	3,914	3,971	4,096	4,074	5,280	5,255	5,051	5,512	5,598	5,708	46%
	Total HC	22,780	22,930	23,309	23,667	26,124	26,805	27,003	27,930	28,184	28,405	25%
Kansas City	Undergraduate	6,108	6,790	8,091	8,299	8,870	9,167	9,393	9,487	9,383	9,094	49%
	Professional	1,272	1,362	1,341	1,390	1,444	1,435	1,494	1,523	1,509	1,548	22%
	Graduate	3,231	3,366	3,266	3,280	3,567	3,624	3,369	3,296	3,321	3,800	18%
	Total HC	10,611	11,518	12,698	12,969	13,881	14,226	14,256	14,306	14,213	14,442	36%
MO S&T	Undergraduate	4,059	3,882	3,698	3,756	3,849	4,089	4,119	4,311	4,515	4,752	17%
	Graduate	859	833	928	1,127	1,391	1,370	1,285	1,289	1,343	1,414	65%
	Total HC	4,918	4,715	4,626	4,883	5,240	5,459	5,404	5,600	5,858	6,166	25%
St. Louis	Undergraduate	13,187	12,986	12,737	12,251	12,715	12,624	12,572	12,606	12,459	12,432	-6%
	Professional	173	173	169	163	158	159	165	164	173	171	-1%
	Graduate	2,520	2,435	2,491	2,579	2,785	2,816	2,761	2,778	2,896	2,924	16%
	Total HC	15,880	15,594	15,397	14,993	15,658	15,599	15,498	15,548	15,528	15,527	-2%
System	Undergraduate	41,052	41,469	42,584	42,737	45,132	46,321	46,967	47,739	47,841	47,864	17%
	Professional	2,613	2,683	2,665	2,715	2,748	2,703	2,728	2,770	2,784	2,830	8%
	Graduate	10,524	10,605	10,781	11,060	13,023	13,065	12,466	12,875	13,158	13,846	32%
	Grand Total HC	54,189	54,757	56,030	56,512	60,903	62,089	62,161	63,384	63,783	64,540	19%

Figure 2. Full-time Equivalence History by Campus, 1998 to 2007



Source: EMSAS Fall Enrollment file
IR&P/RS 2/08

Full-time Equivalent History by Campus, 1998 to 2007

Campus	1998	1999	2000	2001	2002	2003	2004	2005	2006	2007
Columbia	19,259.0	19,412.0	19,950.0	20,231.0	21,804.0	22,556.0	23,000.0	23,703.6	24,182.7	24,280.4
Kansas City	7,300.0	7,656.0	8,049.0	8,334.0	9,001.0	9,290.0	9,607.7	9,795.3	9,797.9	9,843.8
MO S&T	4,225.0	4,070.0	3,997.0	4,148.0	4,481.0	4,604.0	4,594.1	4,799.9	4,982.6	5,323.0
St. Louis	8,965.0	8,994.0	8,986.0	8,958.0	9,214.0	9,224.0	9,162.0	9,451.9	9,467.5	9,546.9
Total	39,749.0	40,132.0	40,982.0	41,671.0	44,500.0	45,674.0	46,363.8	47,750.7	48,430.7	48,994.0

Table 2.0 Headcounts, Full-time Equivalence, and Student Credit Hours by Location, Fall 2003 to Fall 2007

	<u>University of Missouri System</u>															5-yr. Change
	<u>On-Campus</u>					<u>Off-Campus</u>					<u>Total</u>					
	FS03	FS04	FS05	FS06	FS07	FS03	FS04	FS05	FS06	FS07	FS03	FS04	FS05	FS06	FS07	
Headcount by Student Level																
Undergraduate																
Fresh & Soph DS	16,911	17,136	17,577	17,570	17,898	10	11	19	15	30	16,921	17,147	17,596	17,585	17,928	6%
Junior & Senior DS	22,516	22,993	23,702	23,876	23,862	124	116	153	147	222	22,640	23,109	23,855	24,023	24,084	6%
Nondegree	<u>855</u>	<u>764</u>	<u>763</u>	<u>784</u>	<u>737</u>	<u>5,905</u>	<u>5,947</u>	<u>5,525</u>	<u>5,449</u>	<u>5,115</u>	<u>6,760</u>	<u>6,711</u>	<u>6,288</u>	<u>6,233</u>	<u>5,852</u>	-13%
Total Undergraduate	40,282	40,893	42,042	42,230	42,497	6,039	6,074	5,697	5,611	5,367	46,321	46,967	47,739	47,841	47,864	3%
First Professional																
Dentistry (DDS)	360	381	388	393	401	0	0	0	0	0	360	381	388	393	401	11%
Law (JD)	994	974	972	971	956	0	0	0	0	0	994	974	972	971	956	-4%
Medicine (MD)	729	726	736	738	759	0	0	0	0	0	729	726	736	738	759	4%
Optometry (OD)	159	165	164	173	171	0	0	0	0	0	159	165	164	173	171	8%
Pharmacy (DPharm)	210	225	243	238	238	0	0	0	0	27	210	225	243	238	265	26%
Vet. Med. (DVM)	<u>256</u>	<u>257</u>	<u>267</u>	<u>271</u>	<u>278</u>	<u>0</u>	<u>0</u>	<u>0</u>	<u>0</u>	<u>0</u>	<u>256</u>	<u>257</u>	<u>267</u>	<u>271</u>	<u>278</u>	9%
Total First Professional	2,708	2,728	2,770	2,784	2,803	0	0	0	0	27	2,708	2,728	2,770	2,784	2,830	5%
Graduate																
Masters & Ed. Spec.	7,817	7,293	7,350	7,456	7,544	946	1,045	1,202	1,321	1,571	8,763	8,338	8,552	8,777	9,115	4%
Doctoral	3,148	3,216	3,356	3,376	3,414	99	110	113	112	101	3,247	3,326	3,469	3,488	3,515	8%
Nondegree	<u>547</u>	<u>487</u>	<u>446</u>	<u>430</u>	<u>841</u>	<u>503</u>	<u>315</u>	<u>408</u>	<u>463</u>	<u>375</u>	<u>1,050</u>	<u>802</u>	<u>854</u>	<u>893</u>	<u>1,216</u>	16%
Total Graduate	11,512	10,996	11,152	11,262	11,799	1,548	1,470	1,723	1,896	2,047	13,060	12,466	12,875	13,158	13,846	6%
Grand Total																
Headcount	54,502	54,617	55,964	56,276	57,099	7,587	7,544	7,420	7,507	7,441	62,089	62,161	63,384	63,783	64,540	4%
FTE Enrollments by Student Level																
Undergraduate	34,076	34,982	36,122.5	36,575.6	36,849.3	1,865	1,902	1,803.6	1,804.9	1,792.4	35,941	36,884	37,926	38,381	38,642	8%
First Professional	2,683	2,681	2,730.0	2,751.4	2,772.6	0	0	0.0	0.0	27.0	2,683	2,681	2,730	2,751	2,800	4%
Graduate	<u>6,469</u>	<u>6,203</u>	<u>6,400.3</u>	<u>6,573.4</u>	<u>6,721.2</u>	<u>581</u>	<u>595</u>	<u>694.3</u>	<u>725.4</u>	<u>831.6</u>	<u>7,050</u>	<u>6,798</u>	<u>7,095</u>	<u>7,299</u>	<u>7,553</u>	7%
Total FTE	43,228	43,866	45,252.8	45,900.4	46,343.1	2,446	2,497	2,497.9	2,530.3	2,651.0	45,674.0	46,363.0	47,750.7	48,430.7	48,994.1	7%
SCH Produced by Student Level																
Undergraduate	511,153	524,735	541,837	548,634	552,740	27,968	28,529	27,055	27,074	26,885	539,121	553,264	568,892	575,708	579,625	8%
First Professional	46,440	45,920	47,502	48,162	47,791	0	0	0	0	353	46,440	45,920	47,502	48,162	48,144	4%
Graduate	<u>77,645</u>	<u>74,436</u>	<u>76,804</u>	<u>78,881</u>	<u>80,655</u>	<u>6,966</u>	<u>7,147</u>	<u>8,331</u>	<u>8,704</u>	<u>9,978</u>	<u>84,611</u>	<u>81,583</u>	<u>85,135</u>	<u>87,585</u>	<u>90,633</u>	7%
Total SCH	635,238	645,091	666,143	675,677	681,186	34,934	35,676	35,386	35,778	37,216	670,172	680,767	701,529	711,455	718,402	7%

Source: EMSAS Fall Enrollment file

Table 2.1 Headcounts, Full-time Equivalence, and Student Credit Hours by Location, Fall 2003 to Fall 2007

	Columbia															5-yr. Change
	<u>On-Campus</u>					<u>Off-Campus</u>					<u>Total</u>					
	FS03	FS04	FS05	FS06	FS07	FS03	FS04	FS05	FS06	FS07	FS03	FS04	FS05	FS06	FS07	
Headcount by Student Level																
Undergraduate																
Fresh & Soph DS	10,283	10,520	10,633	10,501	10,609	9	7	9	10	14	10,292	10,527	10,642	10,511	10,623	3%
Junior & Senior DS	9,638	9,929	10,268	10,588	10,637	97	85	108	105	126	9,735	10,014	10,376	10,693	10,763	11%
Nondegree	<u>245</u>	<u>192</u>	<u>225</u>	<u>209</u>	<u>180</u>	<u>169</u>	<u>150</u>	<u>92</u>	<u>71</u>	<u>20</u>	<u>414</u>	<u>342</u>	<u>317</u>	<u>280</u>	<u>200</u>	-52%
Total Undergraduate	20,166	20,641	21,126	21,298	21,426	275	242	209	186	160	20,441	20,883	21,335	21,484	21,586	6%
First Professional																
Law (JD)	481	439	444	456	458	0	0	0	0	0	481	439	444	456	458	-5%
Medicine (MD)	372	373	372	375	375	0	0	0	0	0	372	373	372	375	375	1%
Vet. Med. (DVM)	<u>256</u>	<u>257</u>	<u>267</u>	<u>271</u>	<u>278</u>	<u>0</u>	<u>0</u>	<u>0</u>	<u>0</u>	<u>0</u>	<u>256</u>	<u>257</u>	<u>267</u>	<u>271</u>	<u>278</u>	9%
Total First Professional	1,109	1,069	1,083	1,102	1,111	0	0	0	0	0	1,109	1,069	1,083	1,102	1,111	0%
Graduate																
Masters & Ed. Spec.	2,192	2,117	2,196	2,160	2,192	576	584	695	800	914	2,768	2,701	2,891	2,960	3,106	12%
Doctoral	1,832	1,848	1,990	2,019	2,029	78	95	82	82	78	1,910	1,943	2,072	2,101	2,107	10%
Nondegree	<u>228</u>	<u>201</u>	<u>223</u>	<u>185</u>	<u>215</u>	<u>349</u>	<u>206</u>	<u>326</u>	<u>352</u>	<u>280</u>	<u>577</u>	<u>407</u>	<u>549</u>	<u>537</u>	<u>495</u>	-14%
Total Graduate	4,252	4,166	4,409	4,364	4,436	1,003	885	1,103	1,234	1,272	5,255	5,051	5,512	5,598	5,708	9%
Grand Total																
Headcount	25,527	25,876	26,618	26,764	26,973	1,278	1,127	1,312	1,420	1,432	26,805	27,003	27,930	28,184	28,405	6%
FTE Enrollments by Student Level																
Undergraduate	18,320	18,905	19,372.1	19,712.3	19,785.3	86	74	67.7	68.3	61.3	18,406	18,979	19,440	19,781	19,847	8%
First Professional	1,109	1,048	1,066.2	1,083.4	1,093.8	0	0	0.0	0.0	0.0	1,109	1,048	1,066	1,083	1,094	-1%
Graduate	<u>2,664</u>	<u>2,625</u>	<u>2,770.1</u>	<u>2,820.9</u>	<u>2,815.4</u>	<u>376</u>	<u>348</u>	<u>427.5</u>	<u>497.8</u>	<u>524.6</u>	<u>3,040</u>	<u>2,973</u>	<u>3,198</u>	<u>3,319</u>	<u>3,340</u>	10%
Total FTE	22,093	22,578	23,208.4	23,616.6	23,694.5	462	422	495.2	566.1	585.9	22,555.0	23,000.0	23,703.6	24,182.7	24,280.4	8%
SCH Produced by Student Level																
Undergraduate	274,806	283,579	290,581	295,684	296,780	1,283	1,111	1,016	1,025	919	276,089	284,690	291,597	296,709	297,699	8%
First Professional	18,003	16,131	17,050	17,792	17,256	0	0	0	0	0	18,003	16,131	17,050	17,792	17,256	-4%
Graduate	<u>31,972</u>	<u>31,496</u>	<u>33,241</u>	<u>33,851</u>	<u>33,785</u>	<u>4,515</u>	<u>4,177</u>	<u>5,130</u>	<u>5,973</u>	<u>6,295</u>	<u>36,487</u>	<u>35,673</u>	<u>38,371</u>	<u>39,824</u>	<u>40,080</u>	10%
Total SCH	324,781	331,206	340,872	347,327	347,821	5,798	5,288	6,146	6,998	7,214	330,579	336,494	347,018	354,325	355,035	7%

Source: EMSAS Fall Enrollment file

Table 2.2 Headcounts, Full-time Equivalence, and Student Credit Hours by Location, Fall 2003 to Fall 2007

	Kansas City															5-yr. Change
	<u>On-Campus</u>					<u>Off-Campus</u>					<u>Total</u>					
	FS03	FS04	FS05	FS06	FS07	FS03	FS04	FS05	FS06	FS07	FS03	FS04	FS05	FS06	FS07	
Headcount by Student Level																
Undergraduate																
Fresh & Soph DS	2,477	2,612	2,865	2,880	3,029	0	1	0	0	13	2,477	2,613	2,865	2,880	3,042	23%
Junior & Senior DS	4,035	4,180	4,200	4,187	3,890	0	0	0	0	43	4,035	4,180	4,200	4,187	3,933	-3%
Nondegree	<u>334</u>	<u>305</u>	<u>273</u>	<u>284</u>	<u>255</u>	<u>2,321</u>	<u>2,295</u>	<u>2,149</u>	<u>2,032</u>	<u>1,864</u>	<u>2,655</u>	<u>2,600</u>	<u>2,422</u>	<u>2,316</u>	<u>2,119</u>	-20%
Total Undergraduate	6,846	7,097	7,338	7,351	7,174	2,321	2,296	2,149	2,032	1,920	9,167	9,393	9,487	9,383	9,094	-1%
First Professional																
Dentistry (DDS)	360	381	388	393	401	0	0	0	0	0	360	381	388	393	401	11%
Law (JD)	513	535	528	515	498	0	0	0	0	0	513	535	528	515	498	-3%
Medicine (MD)	357	353	364	363	384	0	0	0	0	0	357	353	364	363	384	8%
Pharmacy (DPharm)	<u>210</u>	<u>225</u>	<u>243</u>	<u>238</u>	<u>238</u>	<u>0</u>	<u>0</u>	<u>0</u>	<u>0</u>	<u>27</u>	<u>210</u>	<u>225</u>	<u>243</u>	<u>238</u>	<u>265</u>	26%
Total First Professional	1,440	1,494	1,523	1,509	1,521	0	0	0	0	27	1,440	1,494	1,523	1,509	1,548	8%
Graduate																
Masters & Ed. Spec.	2,813	2,622	2,570	2,571	2,623	0	0	0	1	54	2,813	2,622	2,570	2,572	2,677	-5%
Doctoral	541	546	543	522	536	0	0	0	0	0	541	546	543	522	536	-1%
Nondegree	<u>202</u>	<u>181</u>	<u>142</u>	<u>143</u>	<u>505</u>	<u>63</u>	<u>20</u>	<u>41</u>	<u>84</u>	<u>82</u>	<u>265</u>	<u>201</u>	<u>183</u>	<u>227</u>	<u>587</u>	122%
Total Graduate	3,556	3,349	3,255	3,236	3,664	63	20	41	85	136	3,619	3,369	3,296	3,321	3,800	5%
Grand Total																
Headcount	11,842	11,940	12,116	12,096	12,359	2,384	2,316	2,190	2,117	2,083	14,226	14,256	14,306	14,213	14,442	2%
FTE Enrollments by Student Level																
Undergraduate	5,434	5,779	6,012.1	6,032.3	5,887.2	556	575	527.7	495.3	512.7	5,990	6,354	6,540	6,528	6,400	7%
First Professional	1,415	1,468	1,499.8	1,495.0	1,507.8	0	0	0.0	0.0	27.0	1,415	1,468	1,500	1,495	1,535	8%
Graduate	<u>1,875</u>	<u>1,781</u>	<u>1,746.7</u>	<u>1,760.3</u>	<u>1,873.8</u>	<u>11</u>	<u>4</u>	<u>9.0</u>	<u>14.9</u>	<u>35.3</u>	<u>1,886</u>	<u>1,785</u>	<u>1,756</u>	<u>1,775</u>	<u>1,909</u>	1%
Total FTE	8,724	9,028	9,258.6	9,287.6	9,268.8	567	579	536.7	510.2	575.0	9,291.0	9,607.0	9,795.3	9,797.8	9,843.8	6%
SCH Produced by Student Level																
Undergraduate	81,505	86,690	90,181	90,485	88,308	8,335	8,626	7,916	7,430	7,691	89,840	95,316	98,097	97,915	95,999	7%
First Professional	25,094	26,458	27,113	26,941	27,029	0	0	0	0	353	25,094	26,458	27,113	26,941	27,382	9%
Graduate	<u>22,507</u>	<u>21,370</u>	<u>20,961</u>	<u>21,124</u>	<u>22,486</u>	<u>132</u>	<u>53</u>	<u>108</u>	<u>179</u>	<u>423</u>	<u>22,639</u>	<u>21,423</u>	<u>21,069</u>	<u>21,303</u>	<u>22,909</u>	1%
Total SCH	129,106	134,518	138,255	138,550	137,823	8,467	8,679	8,024	7,609	8,467	137,573	143,197	146,279	146,159	146,290	6%

Source: EMSAS Fall Enrollment file

Table 2.3 Headcounts, Full-time Equivalence, and Student Credit Hours by Location, Fall 2003 to Fall 2007

	<u>Missouri S&T</u>															5-yr. Change
	<u>On-Campus</u>					<u>Off-Campus</u>					<u>Total</u>					
	FS03	FS04	FS05	FS06	FS07	FS03	FS04	FS05	FS06	FS07	FS03	FS04	FS05	FS06	FS07	
Headcount by Student Level																
Undergraduate																
Fresh & Soph DS	1,827	1,896	1,915	1,993	2,127	0	0	0	0	0	1,827	1,896	1,915	1,993	2,127	16%
Junior & Senior DS	2,121	2,122	2,304	2,472	2,578	0	0	0	0	0	2,121	2,122	2,304	2,472	2,578	22%
Nondegree	<u>52</u>	<u>49</u>	<u>29</u>	<u>34</u>	<u>35</u>	<u>89</u>	<u>52</u>	<u>63</u>	<u>16</u>	<u>12</u>	<u>141</u>	<u>101</u>	<u>92</u>	<u>50</u>	<u>47</u>	-67%
Total Undergraduate	4,000	4,067	4,248	4,499	4,740	89	52	63	16	12	4,089	4,119	4,311	4,515	4,752	16%
Graduate																
Masters & Ed. Spec.	702	479	487	540	557	244	363	410	434	502	946	842	897	974	1,059	12%
Doctoral	339	370	357	338	331	7	7	12	12	13	346	377	369	350	344	-1%
Nondegree	<u>24</u>	<u>18</u>	<u>8</u>	<u>12</u>	<u>8</u>	<u>54</u>	<u>48</u>	<u>15</u>	<u>7</u>	<u>3</u>	<u>78</u>	<u>66</u>	<u>23</u>	<u>19</u>	<u>11</u>	-86%
Total Graduate	1,065	867	852	890	896	305	418	437	453	518	1,370	1,285	1,289	1,343	1,414	3%
Grand Total																
Headcount	5,065	4,934	5,100	5,389	5,636	394	470	500	469	530	5,459	5,404	5,600	5,858	6,166	13%
FTE Enrollments by Student Level																
Undergraduate	3,750	3,805	3,986.6	4,196.7	4,480.5	19	11	13.4	3.1	2.7	3,769	3,816	4,000	4,200	4,483	19%
Graduate	<u>694</u>	<u>579</u>	<u>587.9</u>	<u>615.2</u>	<u>611.1</u>	<u>141</u>	<u>199</u>	<u>212.0</u>	<u>167.7</u>	<u>228.7</u>	<u>835</u>	<u>778</u>	<u>800</u>	<u>783</u>	<u>840</u>	1%
Total FTE	4,444	4,384	4,574.5	4,811.9	5,091.6	160	210	225.4	170.8	231.4	4,604.0	4,594.0	4,799.9	4,982.7	5,323.0	16%
SCH Produced by Student Level																
Undergraduate	56,255	57,072	59,799	62,950	67,208	290	158	201	46	40	56,545	57,230	60,000	62,996	67,248	19%
Graduate	<u>8,329</u>	<u>6,953</u>	<u>7,055</u>	<u>7,382</u>	<u>7,333</u>	<u>1,691</u>	<u>2,392</u>	<u>2,544</u>	<u>2,012</u>	<u>2,744</u>	<u>10,020</u>	<u>9,345</u>	<u>9,599</u>	<u>9,394</u>	<u>10,077</u>	1%
Total SCH	64,584	64,025	66,854	70,332	74,541	1,981	2,550	2,745	2,058	2,784	66,565	66,575	69,599	72,390	77,325	16%

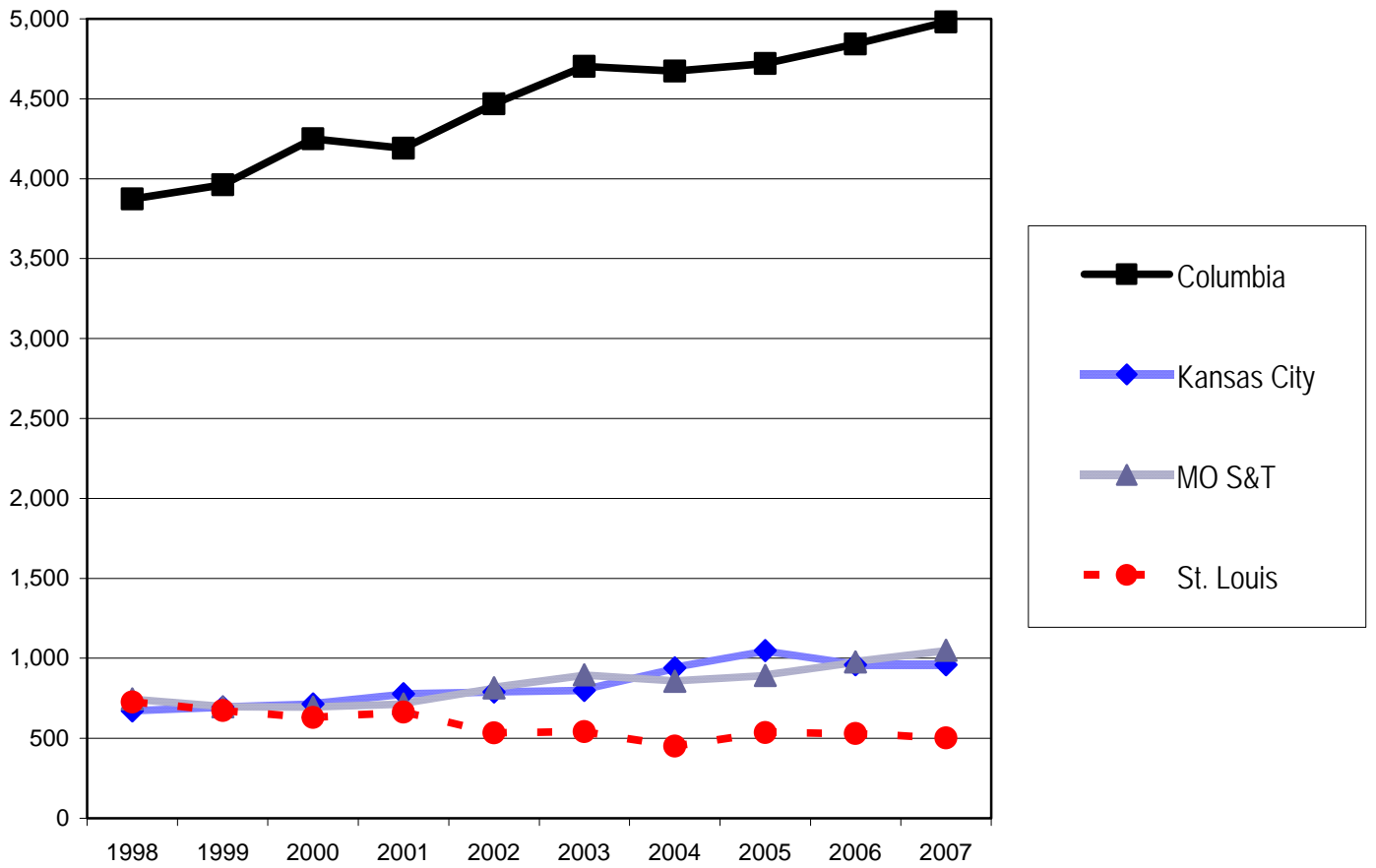
Source: EMSAS Fall Enrollment file

Table 2.4 Headcounts, Full-time Equivalence, and Student Credit Hours by Location, Fall 2003 to Fall 2007

	<u>St. Louis</u>															5-yr. Change
	<u>On-Campus</u>					<u>Off-Campus</u>					<u>Total</u>					
	FS03	FS04	FS05	FS06	FS07	FS03	FS04	FS05	FS06	FS07	FS03	FS04	FS05	FS06	FS07	
Headcount by Student Level																
Undergraduate																
Fresh & Soph DS	2,324	2,108	2,164	2,196	2,133	1	3	10	5	3	2,325	2,111	2,174	2,201	2,136	-8%
Junior & Senior DS	6,722	6,762	6,930	6,629	6,757	27	31	45	42	53	6,749	6,793	6,975	6,671	6,810	1%
Nondegree	<u>224</u>	<u>218</u>	<u>236</u>	<u>257</u>	<u>267</u>	<u>3,326</u>	<u>3,450</u>	<u>3,221</u>	<u>3,330</u>	<u>3,219</u>	<u>3,550</u>	<u>3,668</u>	<u>3,457</u>	<u>3,587</u>	<u>3,486</u>	-2%
Total Undergraduate	9,270	9,088	9,330	9,082	9,157	3,354	3,484	3,276	3,377	3,275	12,624	12,572	12,606	12,459	12,432	-2%
First Professional																
Optometry (OD)	<u>159</u>	<u>165</u>	<u>164</u>	<u>173</u>	<u>171</u>						<u>159</u>	<u>165</u>	<u>164</u>	<u>173</u>	<u>171</u>	8%
Total First Professional	159	165	164	173	171	0	0	0	0	0	159	165	164	173	171	8%
Graduate																
Masters & Ed. Spec.	2,110	2,075	2,097	2,185	2,172	126	98	97	86	101	2,236	2,173	2,194	2,271	2,273	2%
Doctoral	436	452	466	497	518	14	8	19	18	10	450	460	485	515	528	17%
Nondegree	<u>93</u>	<u>87</u>	<u>73</u>	<u>90</u>	<u>113</u>	<u>37</u>	<u>41</u>	<u>26</u>	<u>20</u>	<u>10</u>	<u>130</u>	<u>128</u>	<u>99</u>	<u>110</u>	<u>123</u>	-5%
Total Graduate	2,639	2,614	2,636	2,772	2,803	177	147	142	124	121	2,816	2,761	2,778	2,896	2,924	4%
Grand Total																
Headcount	12,068	11,867	12,130	12,027	12,131	3,531	3,631	3,418	3,501	3,396	15,599	15,498	15,548	15,528	15,527	0%
FTE Enrollments by Student Level																
Undergraduate	6,572	6,493	6,751.7	6,634.3	6,696.3	1,204	1,242	1,194.8	1,238.2	1,215.7	7,776	7,735	7,947	7,873	7,912	2%
First Professional	159	165	164.0	173.0	171.0	0	0	0.0	0.0	0.0	159	165	164	173	171	8%
Graduate	<u>1,236</u>	<u>1,218</u>	<u>1,295.6</u>	<u>1,377.0</u>	<u>1,420.9</u>	<u>53</u>	<u>44</u>	<u>45.8</u>	<u>45.0</u>	<u>43.0</u>	<u>1,289</u>	<u>1,262</u>	<u>1,341</u>	<u>1,422</u>	<u>1,464</u>	14%
Total FTE	7,967	7,876	8,211.3	8,184.3	8,288.2	1,257	1,286	1,240.6	1,283.2	1,258.7	9,224.0	9,162.0	9,451.9	9,467.5	9,546.9	4%
SCH Produced by Student Level																
Undergraduate	98,587	97,394	101,276	99,515	100,444	18,060	18,634	17,922	18,573	18,235	116,647	116,028	119,198	118,088	118,679	2%
First Professional	3,343	3,331	3,339	3,429	3,506	0	0	0	0	0	3,343	3,331	3,339	3,429	3,506	5%
Graduate	<u>14,837</u>	<u>14,617</u>	<u>15,547</u>	<u>16,524</u>	<u>17,051</u>	<u>628</u>	<u>525</u>	<u>549</u>	<u>540</u>	<u>516</u>	<u>15,465</u>	<u>15,142</u>	<u>16,096</u>	<u>17,064</u>	<u>17,567</u>	14%
Total SCH	116,767	115,342	120,162	119,468	121,001	18,688	19,159	18,471	19,113	18,751	135,455	134,501	138,633	138,581	139,752	3%

Source: EMSAS Fall Enrollment file

Figure 3a. First-time College Freshmen History, 1998 to 2007

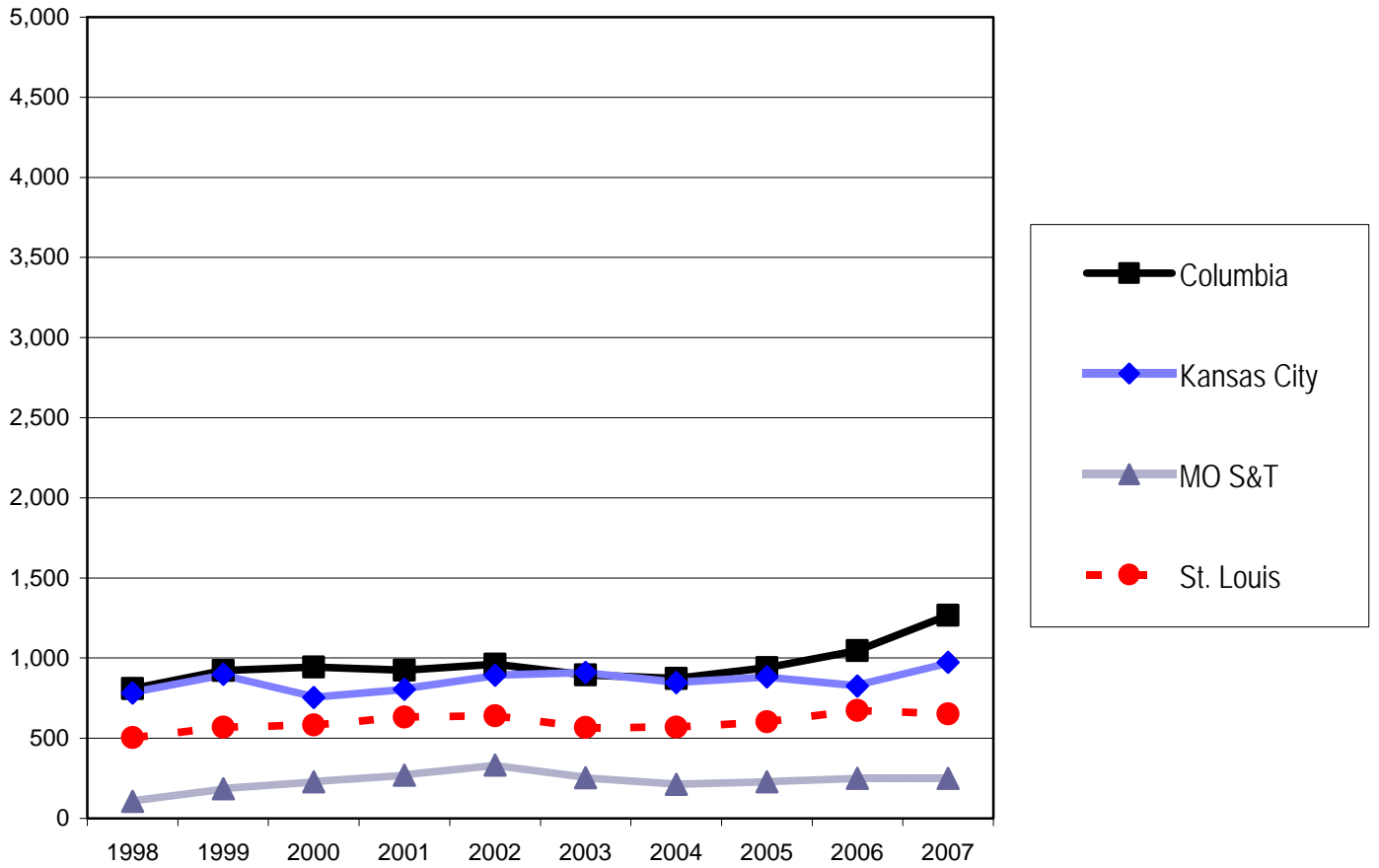


Source: EMSAS Fall Enrollment file
IR&P/RS 2/08

First-time College Freshmen History, 1998 to 2007

Campus	1998	1999	2000	2001	2002	2003	2004	2005	2006	2007
Columbia	3,874	3,961	4,250	4,191	4,468	4,702	4,673	4,720	4,842	4,981
Kansas City	671	696	715	778	790	799	939	1,048	959	959
MO S&T	747	697	696	715	815	897	856	892	977	1,050
St. Louis	726	674	631	663	533	542	451	536	530	502
Total	6,018	6,028	6,292	6,347	6,606	6,940	6,919	7,196	7,308	7,492

Figure 3b. New Graduate Student History by Campus, 1998 to 2007

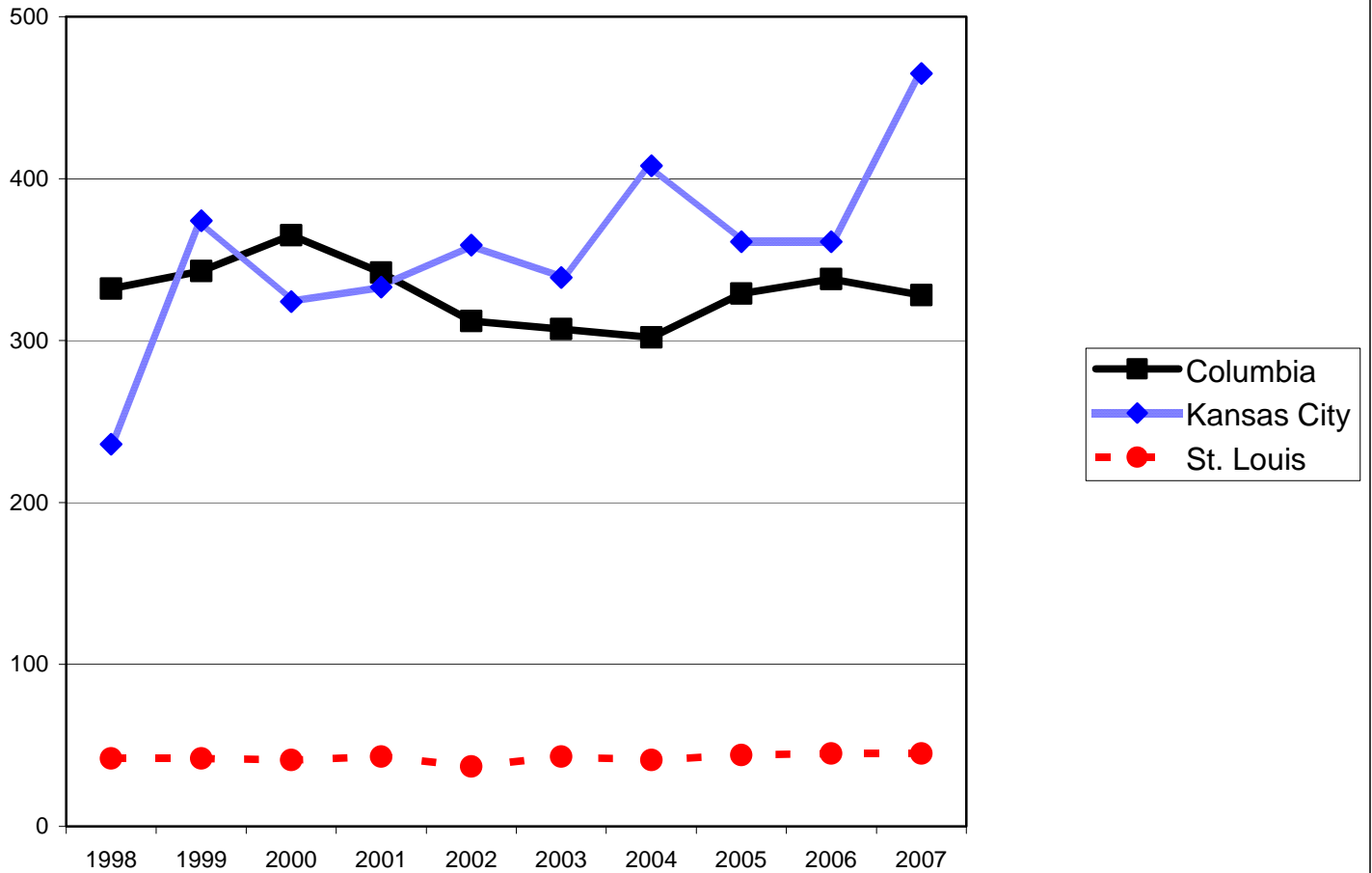


Source: EMSAS Fall Enrollment file
IR&P/RS 2/08

New Graduate Student History by Campus, 1998 to 2007

Campus	1998	1999	2000	2001	2002	2003	2004	2005	2006	2007
Columbia	809	922	944	923	962	894	873	939	1,046	1,266
Kansas City	782	899	754	806	892	911	848	882	826	973
MO S&T	106	186	229	269	332	254	212	228	251	250
St. Louis	504	569	584	632	641	568	570	603	674	652
Total	2,201	2,576	2,511	2,630	2,827	2,627	2,503	2,652	2,797	3,141

Figure 3c. New First Professional Student History by Campus, 1998 to 2007



Source: EMSAS Fall Enrollment file
IR&P/LCB 3/08

New First Professional Student History By Campus, 1998 to 2007

Campus	1998	1999	2000	2001	2002	2003	2004	2005	2006	2007
Columbia	332	343	365	342	312	307	302	329	338	328
Kansas City	236	374	324	333	359	339	408	361	361	465
St. Louis	42	42	41	43	37	43	41	44	45	45
Total	610	759	730	718	708	689	751	734	744	838

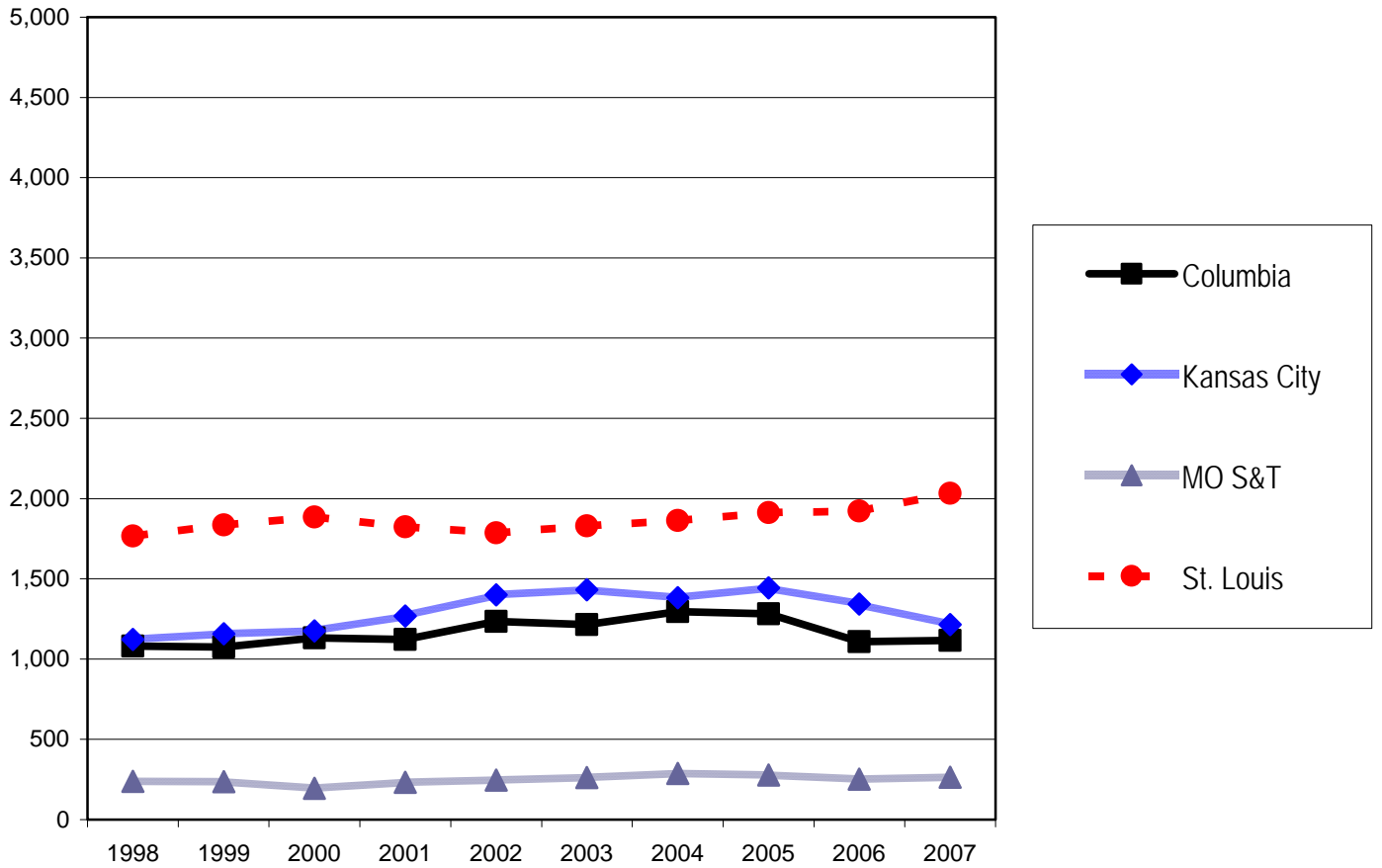
Table 3. On-Campus New Student Headcount, Fall 2003 - Fall 2007

		2003	2004	2005	2006	2007	5 yr. Change
Columbia							
Freshmen							
	Degree-Seeking	4,669	4,668	4,718	4,836	4,980	7%
	Non Degree-Seeking	33	5	2	6	1	-97%
Undergraduate Transfers							
	Degree-Seeking	1,122	1,217	1,178	1,030	986	-12%
	Non Degree-Seeking	93	78	103	78	130	40%
Professional							
	Degree-Seeking	307	302	329	338	328	7%
Graduate							
	Degree-Seeking	803	770	841	940	1,142	42%
	Non Degree-Seeking	91	103	98	106	124	36%
Kansas City							
Freshmen							
	Degree-Seeking	788	921	1,039	955	959	22%
	Non Degree-Seeking	11	18	9	4	0	-100%
Undergraduate Transfers							
	Degree-Seeking	1,265	1,246	1,302	1,176	1,192	-6%
	Non Degree-Seeking	167	136	141	167	22	-87%
Professional							
	Degree-Seeking	339	408	361	361	462	36%
	Non Degree-Seeking					3	
Graduate							
	Degree-Seeking	806	766	801	768	973	21%
	Non Degree-Seeking	105	82	81	58	0	-100%
Missouri S&T							
Freshmen							
	Degree-Seeking	878	842	884	962	1,041	19%
	Non Degree-Seeking	19	14	8	15	9	-53%
Undergraduate Transfers							
	Degree-Seeking	254	279	273	248	264	4%
	Non Degree-Seeking	9	8	5	4	0	-100%
Graduate							
	Degree-Seeking	237	242	225	242	243	3%
	Non Degree-Seeking	17	13	3	9	7	-59%
St Louis							
Freshmen							
	Degree-Seeking	534	449	531	525	498	-7%
	Non Degree-Seeking	8	2	5	5	4	-50%
Undergraduate Transfers							
	Degree-Seeking	1,728	1,752	1,762	1,763	1,852	7%
	Non Degree-Seeking	101	111	150	159	180	78%
Professional							
	Degree-Seeking	43	41	44	45	45	5%
Graduate							
	Degree-Seeking	540	547	576	621	583	8%
	Non Degree-Seeking	28	23	27	53	69	146%

Source: EMSAS Fall Enrollment file

IR&P/LCB 2/08

Figure 4. First-time On-Campus Undergraduate Transfer Student History by Campus, 1998 to 2007



Source: EMSAS Fall Enrollment file
IR&P/LCB 2/08

First-time On-Campus Undergraduate Transfer Student History by Campus, 1998 to 2007

Campus	1998	1999	2000	2001	2002	2003	2004	2005	2006	2007
Columbia	1,080	1,074	1,131	1,122	1,234	1,215	1,295	1,281	1,108	1,116
Kansas City	1,122	1,157	1,175	1,268	1,399	1,432	1,382	1,443	1,343	1,214
MO S&T	239	236	195	232	247	263	287	278	252	264
St. Louis	1,767	1,835	1,884	1,823	1,787	1,829	1,863	1,912	1,922	2,032
Total	4,208	4,302	4,385	4,445	4,667	4,739	4,827	4,914	4,625	4,626

Table 4.0a Resident Headcount History by Student Level, Load, and Campus, Fall 2003 to Fall 2007

Level	2003	2004	2005	2006	2007	5 yr. Change
UNIVERSITY OF MISSOURI SYSTEM FULL-TIME RESIDENT HEADCOUNT						
Undergraduate						
Freshman & Soph DS	13,105	13,215	13,482	13,412	13,504	3%
Junior & Senior DS	15,101	15,525	16,017	16,335	16,378	8%
Nondegree	100	88	117	124	138	38%
Total System Full-time Resident Undergraduate	28,306	28,828	29,616	29,871	30,020	6%
First Professional						
Dentistry (DDS)	222	231	239	252	265	19%
Law (JD)	800	778	804	778	771	-4%
Medicine (MD)	624	619	533	611	641	3%
Optometry (OD)	90	99	87	83	86	-4%
Pharmacy (Dpharm)	194	205	228	225	252	30%
Vet. Med (DVM)	240	201	244	254	255	6%
Total System Full-time Resident 1st Professional	2,170	2,133	2,135	2,203	2,270	5%
Graduate						
Masters& Ed. Spec.	2,019	1,925	2,098	2,084	2,051	2%
Doctoral	389	406	450	516	489	26%
Nondegree	56	51	61	48	47	-16%
Total System Full-time Resident Graduate	2,464	2,382	2,609	2,648	2,587	5%
Total System Full-time Resident Headcount	32,940	33,343	34,360	34,722	34,877	6%
UNIVERSITY OF MISSOURI SYSTEM PART-TIME RESIDENT HEADCOUNT						
Undergraduate						
Freshman & Soph DS	1,005	971	976	942	1,012	1%
Junior & Senior DS	4,589	4,512	4,535	4,326	4,307	-6%
Nondegree	6,337	6,304	5,846	5,784	5,483	-13%
Total System Part-time Resident Undergraduate	11,931	11,787	11,357	11,052	10,802	-9%
First Professional						
Law (JD)	54	47	19	35	40	-26%
Medicine (MD)	0	0	89	1	0	
Vet. Med (DVM)	0	46	5	3	0	
Total System Part-time Resident 1st Professional	54	93	113	39	40	-26%
Graduate						
Masters& Ed. Spec.	3,725	3,671	3,654	3,624	3,790	2%
Doctoral	1,119	1,092	1,154	1,103	1,180	5%
Nondegree	664	532	573	601	945	42%
Total System Part-time Resident Graduate	5,508	5,295	5,381	5,328	5,915	7%
Total System Part-time Resident Headcount	17,493	17,175	16,851	16,419	16,757	-4%
UNIVERSITY OF MISSOURI SYSTEM TOTAL RESIDENT HEADCOUNT						
Undergraduate						
Freshman & Soph DS	14,110	14,186	14,458	14,354	14,516	3%
Junior & Senior DS	19,690	20,037	20,552	20,661	20,685	5%
Nondegree	6,437	6,392	5,963	5,908	5,621	-13%
Total System Resident Undergraduate	40,237	40,615	40,973	40,923	40,822	1%
First Professional						
Dentistry (DDS)	222	231	239	252	265	19%
Law (JD)	854	825	823	813	811	-5%
Medicine (MD)	624	619	622	612	641	3%
Optometry (OD)	90	99	87	83	86	-4%
Pharmacy (Dpharm)	194	205	228	225	252	30%
Vet. Med (DVM)	240	247	249	257	255	6%
Total System Resident 1st Professional	2,224	2,226	2,248	2,242	2,310	4%
Graduate						
Masters& Ed. Spec.	5,744	5,596	5,752	5,708	5,841	2%
Doctoral	1,508	1,498	1,604	1,619	1,669	11%
Nondegree	720	583	634	649	992	38%
Total System Resident Graduate	7,972	7,677	7,990	7,976	8,502	7%
Grand Total System Resident Headcount	50,433	50,518	51,211	51,141	51,634	2%

Table 4.0b Non-Resident Headcount History by Student Level, Load, and Campus, Fall 2003 to Fall 2007

Level	2003	2004	2005	2006	2007	5 yr. Change
UNIVERSITY OF MISSOURI SYSTEM FULL-TIME NON-RESIDENT HEADCOUNT						
Undergraduate						
Freshman & Soph DS	2,630	2,823	2,988	3,051	3,191	21%
Junior & Senior DS	2,408	2,556	2,724	2,786	2,817	17%
Nondegree	46	53	92	96	111	141%
Total System Full-time Non-Resident Undergraduate	5,084	5,432	5,804	5,933	6,119	20%
First Professional						
Dentistry (DDS)	138	150	149	141	136	-1%
Law (JD)	123	134	143	151	137	11%
Medicine (MD)	105	107	112	126	118	12%
Optometry (OD)	69	66	77	90	85	23%
Pharmacy (Dpharm)	16	20	15	13	13	-19%
Vet. Med (DVM)	16	10	18	14	23	44%
Total System Full-time Non-Resident 1st Professional	467	487	514	535	512	10%
Graduate						
Masters& Ed. Spec.	1,611	1,409	1,495	1,697	1,777	10%
Doctoral	1,010	1,094	1,064	1,019	982	-3%
Nondegree	25	32	29	34	28	12%
Total System Full-time Non-Resident Graduate	2,646	2,535	2,588	2,750	2,787	5%
Total System Full-time Non-Resident Headcount	8,197	8,454	8,906	9,218	9,418	15%
UNIVERSITY OF MISSOURI SYSTEM PART-TIME NON-RESIDENT HEADCOUNT						
Undergraduate						
Freshman & Soph DS	181	138	150	180	221	22%
Junior & Senior DS	542	516	579	576	582	7%
Nondegree	277	266	233	229	120	-57%
Total System Part-time Non-Resident Undergraduate	1,000	920	962	985	923	-8%
First Professional						
Law (JD)	17	15	6	7	8	-53%
Medicine (MD)	0	0	2	0	0	
Total System Part-time Non-Resident 1st Professional	17	15	8	7	8	-53%
Graduate						
Masters& Ed. Spec.	1,408	1,333	1,305	1,372	1,497	6%
Doctoral	729	734	801	850	864	19%
Nondegree	305	187	191	210	196	-36%
Total System Part-time Non-Resident Graduate	2,442	2,254	2,297	2,432	2,557	5%
Total System Part-time Non-Resident Headcount	3,459	3,189	3,267	3,424	3,488	1%
UNIVERSITY OF MISSOURI SYSTEM TOTAL NON-RESIDENT HEADCOUNT						
Undergraduate						
Freshman & Soph DS	2,811	2,961	3,138	3,231	3,412	21%
Junior & Senior DS	2,950	3,072	3,303	3,362	3,399	15%
Nondegree	323	319	325	325	231	-28%
Total System Non-Resident Undergraduate	6,084	6,352	6,766	6,918	7,042	16%
First Professional						
Dentistry (DDS)	138	150	149	141	136	-1%
Law (JD)	140	149	149	158	145	4%
Medicine (MD)	105	107	114	126	118	12%
Optometry (OD)	69	66	77	90	85	23%
Pharmacy (Dpharm)	16	20	15	13	13	-19%
Vet. Med (DVM)	16	10	18	14	23	44%
Total System Non-Resident 1st Professional	484	502	522	542	520	7%
Graduate						
Masters& Ed. Spec.	3,019	2,742	2,800	3,069	3,274	8%
Doctoral	1,739	1,828	1,865	1,869	1,846	6%
Nondegree	330	219	220	244	224	-32%
Total System Non-Resident Graduate	5,088	4,789	4,885	5,182	5,344	5%
Grand Total System Non-Resident Headcount	11,656	11,643	12,173	12,642	12,906	11%

Table 4.1a Resident Headcount History by Student Level, Load, and Campus, Fall 2003 to Fall 2007

Level	2003	2004	2005	2006	2007	5 yr. Change
UNIVERSITY OF MISSOURI-COLUMBIA FULL-TIME RESIDENT HEADCOUNT						
Undergraduate						
Freshman & Soph DS	8,452	8,609	8,552	8,463	8,438	0%
Junior & Senior DS	8,060	8,232	8,504	8,845	8,769	9%
Nondegree	5	5	3	1	9	80%
Total UMC Full-time Resident Undergraduate	16,517	16,846	17,059	17,309	17,216	4%
First Professional						
Law (JD)	438	402	415	404	404	-8%
Medicine (MD)	363	364	274	364	370	2%
Vet. Med (DVM)	240	201	244	254	255	6%
Total UMC Full-time Resident 1st Professional	1,041	967	933	1,022	1,029	-1%
Graduate						
Masters& Ed. Spec.	1,018	1,008	1,061	1,112	1,074	6%
Doctoral	245	270	292	336	305	24%
Nondegree	47	42	45	38	28	-40%
Total UMC Full-time Resident Graduate	1,310	1,320	1,398	1,486	1,407	7%
Total UMC Full-time Resident Headcount	18,868	19,133	19,390	19,817	19,652	4%
UNIVERSITY OF MISSOURI-COLUMBIA PART-TIME RESIDENT HEADCOUNT						
Undergraduate						
Freshman & Soph DS	279	249	255	217	267	-4%
Junior & Senior DS	660	703	737	698	746	13%
Nondegree	283	231	229	204	143	-49%
Total UMC Part-time Resident Undergraduate	1,222	1,183	1,221	1,119	1,156	-5%
First Professional						
Law (JD)	16	15	9	13	14	-13%
Medicine (MD)	0	0	89	1	0	
Vet. Med (DVM)	0	46	5	3	0	
Total UMC Part-time Resident 1st Professional	16	61	103	17	14	-13%
Graduate						
Masters& Ed. Spec.	824	786	858	808	935	13%
Doctoral	687	643	700	658	700	2%
Nondegree	375	246	356	328	348	-7%
Total UMC Part-time Resident Graduate	1,886	1,675	1,914	1,794	1,983	5%
Total UMC Part-time Resident Headcount	3,124	2,919	3,238	2,930	3,153	1%
UNIVERSITY OF MISSOURI-COLUMBIA TOTAL RESIDENT HEADCOUNT						
Undergraduate						
Freshman & Soph DS	8,731	8,858	8,807	8,680	8,705	0%
Junior & Senior DS	8,720	8,935	9,241	9,543	9,515	9%
Nondegree	288	236	232	205	152	-47%
Total UMC Resident Undergraduate	17,739	18,029	18,280	18,428	18,372	4%
First Professional						
Law (JD)	454	417	424	417	418	-8%
Medicine (MD)	363	364	363	365	370	2%
Vet. Med (DVM)	240	247	249	257	255	6%
Total UMC Resident 1st Professional	1,057	1,028	1,036	1,039	1,043	-1%
Graduate						
Masters& Ed. Spec.	1,842	1,794	1,919	1,920	2,009	9%
Doctoral	932	913	992	994	1,005	8%
Nondegree	422	288	401	366	376	-11%
Total UMC Resident Graduate	3,196	2,995	3,312	3,280	3,390	6%
Grand Total UMC Resident Headcount	21,992	22,052	22,628	22,747	22,805	4%

Table 4.1b Non-Resident Headcount History by Student Level, Load, and Campus, Fall 2003 to Fall 2007

Level	2003	2004	2005	2006	2007	5 yr. Change
UNIVERSITY OF MISSOURI-COLUMBIA FULL-TIME NON-RESIDENT HEADCOUNT						
Undergraduate						
Freshman & Soph DS	1,519	1,633	1,803	1,790	1,864	23%
Junior & Senior DS	962	1,024	1,074	1,094	1,169	22%
Nondegree	35	30	29	32	35	0%
Total UMC Full-time Non-Resident Undergraduate	2,516	2,687	2,906	2,916	3,068	22%
First Professional						
Law (JD)	27	22	20	38	38	41%
Medicine (MD)	9	9	7	10	5	-44%
Vet. Med (DVM)	16	10	18	14	23	44%
Total UMC Full-time Non-Resident 1st Professional	52	41	45	62	66	27%
Graduate						
Masters& Ed. Spec.	597	531	588	646	664	11%
Doctoral	605	640	648	643	626	3%
Nondegree	17	23	23	26	21	24%
Total UMC Full-time Non-Resident Graduate	1,219	1,194	1,259	1,315	1,311	8%
Total UMC Full-time Non-Resident Headcount	3,787	3,922	4,210	4,293	4,445	17%
UNIVERSITY OF MISSOURI-COLUMBIA PART-TIME NON-RESIDENT HEADCOUNT						
Undergraduate						
Freshman & Soph DS	42	36	32	41	54	29%
Junior & Senior DS	53	55	61	56	79	49%
Nondegree	91	76	56	43	13	-86%
Total UMC Part-time Non-Resident Undergraduate	186	167	149	140	146	-22%
First Professional						
Law (JD)	0	0	0	1	2	0%
Medicine (MD)	0	0	2	0	0	
Vet. Med (DVM)	0	0		0	0	
Total UMC Part-time Non-Resident 1st Professional	0	0	2	1	2	0%
Graduate						
Masters& Ed. Spec.	329	376	384	394	433	32%
Doctoral	373	390	432	464	476	28%
Nondegree	138	96	125	145	98	-29%
Total UMC Part-time Non-Resident Graduate	840	862	941	1,003	1,007	20%
Total UMC Part-time Non-Resident Headcount	1,026	1,029	1,092	1,144	1,155	13%
UNIVERSITY OF MISSOURI-COLUMBIA TOTAL NON-RESIDENT HEADCOUNT						
Undergraduate						
Freshman & Soph DS	1,561	1,669	1,835	1,831	1,918	23%
Junior & Senior DS	1,015	1,079	1,135	1,150	1,248	23%
Nondegree	126	106	85	75	48	-62%
Total UMC Non-Resident Undergraduate	2,702	2,854	3,055	3,056	3,214	19%
First Professional						
Law (JD)	27	22	20	39	40	48%
Medicine (MD)	9	9	9	10	5	-44%
Vet. Med (DVM)	16	10	18	14	23	44%
Total UMC Non-Resident 1st Professional	52	41	47	63	68	31%
Graduate						
Masters& Ed. Spec.	926	907	972	1,040	1,097	18%
Doctoral	978	1,030	1,080	1,107	1,102	13%
Nondegree	155	119	148	171	119	-23%
Total UMC Non-Resident Graduate	2,059	2,056	2,200	2,318	2,318	13%
Grand Total UMC Non-Resident Headcount	4,813	4,951	5,302	5,437	5,600	16%

Table 4.2a Resident Headcount History by Student Level, Load, and Campus, Fall 2003 to Fall 2007

Level	2003	2004	2005	2006	2007	5 yr. Change
UNIVERSITY OF MISSOURI-KANSAS CITY FULL-TIME RESIDENT HEADCOUNT						
Undergraduate						
Freshman & Soph DS	1,678	1,761	1,956	1,948	1,962	17%
Junior & Senior DS	2,064	2,209	2,215	2,144	2,035	-1%
Nondegree	9	14	17	10	27	200%
Total UMKC Full-time Resident Undergraduate	3,751	3,984	4,188	4,102	4,024	7%
First Professional						
Dentistry (DDS)	222	231	239	252	265	19%
Law (JD)	362	376	389	374	367	1%
Medicine (MD)	261	255	259	247	271	4%
Pharmacy (Dpharm)	194	205	228	225	252	30%
Total UMKC Full-time Resident 1st Professional	1,039	1,067	1,115	1,098	1,155	11%
Graduate						
Masters& Ed. Spec.	528	476	515	479	439	-17%
Doctoral	50	44	43	49	41	-18%
Nondegree	8	7	8	5	3	-63%
Total UMKC Full-time Resident Graduate	586	527	566	533	483	-18%
Total UMKC Full-time Resident Headcount	5,376	5,578	5,869	5,733	5,662	5%
UNIVERSITY OF MISSOURI-KANSAS CITY PART-TIME RESIDENT HEADCOUNT						
Undergraduate						
Freshman & Soph DS	196	207	240	236	304	55%
Junior & Senior DS	870	844	792	791	768	-12%
Nondegree	2,526	2,437	2,281	2,142	1,997	-21%
Total UMKC Part-time Resident Undergraduate	3,592	3,488	3,313	3,169	3,069	-15%
First Professional						
Law (JD)	38	32	10	22	26	-32%
Total UMKC Part-time Resident 1st Professional	38	32	10	22	26	-32%
Graduate						
Masters& Ed. Spec.	1,125	1,115	1,036	1,019	1,090	-3%
Doctoral	167	173	172	152	168	1%
Nondegree	140	131	124	174	497	255%
Total UMKC Part-time Resident Graduate	1,432	1,419	1,332	1,345	1,755	23%
Total UMKC Part-time Resident Headcount	5,062	4,939	4,655	4,536	4,850	-4%
UNIVERSITY OF MISSOURI-KANSAS CITY TOTAL RESIDENT HEADCOUNT						
Undergraduate						
Freshman & Soph DS	1,874	1,968	2,196	2,184	2,266	21%
Junior & Senior DS	2,934	3,053	3,007	2,935	2,803	-4%
Nondegree	2,535	2,451	2,298	2,152	2,024	-20%
Total UMKC Resident Undergraduate	7,343	7,472	7,501	7,271	7,093	-3%
First Professional						
Dentistry (DDS)	222	231	239	252	265	19%
Law (JD)	400	408	399	396	393	-2%
Medicine (MD)	261	255	259	247	271	4%
Pharmacy (Dpharm)	194	205	228	225	252	30%
Total UMKC Resident 1st Professional	1,077	1,099	1,125	1,120	1,181	10%
Graduate						
Masters& Ed. Spec.	1,653	1,591	1,551	1,498	1,529	-8%
Doctoral	217	217	215	201	209	-4%
Nondegree	148	138	132	179	500	238%
Total UMKC Resident Graduate	2,018	1,946	1,898	1,878	2,238	11%
Grand Total UMKC Resident Headcount	10,438	10,517	10,524	10,269	10,512	1%

Table 4.2b Non-Resident Headcount History by Student Level, Load, and Campus, Fall 2003 to Fall 2007

Level	2003	2004	2005	2006	2007	5 yr. Change
UNIVERSITY OF MISSOURI-KANSAS CITY FULL-TIME NON-RESIDENT HEADCOUNT						
Undergraduate						
Freshman & Soph DS	504	583	597	627	650	29%
Junior & Senior DS	790	836	878	941	839	6%
Nondegree	4	18	13	17	24	500%
Total UMKC Full-time Non-Resident Undergraduate	1,298	1,437	1,488	1,585	1,513	17%
First Professional						
Dentistry (DDS)	138	150	149	141	136	-1%
Law (JD)	96	112	123	113	99	3%
Medicine (MD)	96	98	105	116	113	18%
Pharmacy (Dpharm)	16	20	15	13	13	-19%
Total UMKC Full-time Non-Resident 1st Professional	346	380	392	383	361	4%
Graduate						
Masters& Ed. Spec.	460	442	444	512	549	19%
Doctoral	100	116	99	100	105	5%
Nondegree	2	2	0	5	1	-50%
Total UMKC Full-time Non-Resident Graduate	562	560	543	617	655	17%
Total UMKC Full-time Non-Resident Headcount	2,206	2,377	2,423	2,585	2,529	15%
UNIVERSITY OF MISSOURI-KANSAS CITY PART-TIME NON-RESIDENT HEADCOUNT						
Undergraduate						
Freshman & Soph DS	99	62	72	69	126	27%
Junior & Senior DS	311	291	315	311	291	-6%
Nondegree	116	131	111	147	71	-39%
Total UMKC Part-time Non-Resident Undergraduate	526	484	498	527	488	-7%
First Professional						
Law (JD)	17	15	6	6	6	-65%
Total UMKC Part-time Non-Resident 1st Professional	17	15	6	6	6	-65%
Graduate						
Masters& Ed. Spec.	700	589	575	562	599	-14%
Doctoral	224	213	229	221	222	-1%
Nondegree	115	61	51	43	86	-25%
Total UMKC Part-time Non-Resident Graduate	1,039	863	855	826	907	-13%
Total UMKC Part-time Non-Resident Headcount	1,582	1,362	1,359	1,359	1,401	-11%
UNIVERSITY OF MISSOURI-KANSAS CITY TOTAL NON-RESIDENT HEADCOUNT						
Undergraduate						
Freshman & Soph DS	603	645	669	696	776	29%
Junior & Senior DS	1,101	1,127	1,193	1,252	1,130	3%
Nondegree	120	149	124	164	95	-21%
Total UMKC Non-Resident Undergraduate	1,824	1,921	1,986	2,112	2,001	10%
First Professional						
Dentistry (DDS)	138	150	149	141	136	-1%
Law (JD)	113	127	129	119	105	-7%
Medicine (MD)	96	98	105	116	113	18%
Pharmacy (Dpharm)	16	20	15	13	13	-19%
Total UMKC Non-Resident 1st Professional	363	395	398	389	367	1%
Graduate						
Masters& Ed. Spec.	1,160	1,031	1,019	1,074	1,148	-1%
Doctoral	324	329	328	321	327	1%
Nondegree	117	63	51	48	87	-26%
Total UMKC Non-Resident Graduate	1,601	1,423	1,398	1,443	1,562	-2%
Grand Total UMKC Non-Resident Headcount	3,788	3,739	3,782	3,944	3,930	4%

Table 4.3a Resident Headcount History by Student Level, Load, and Campus, Fall 2003 to Fall 2007

Level	2003	2004	2005	2006	2007	5 yr. Change
MISSOURI S&T FULL-TIME RESIDENT HEADCOUNT						
Undergraduate						
Freshman & Soph DS	1,372	1,417	1,453	1,497	1,607	17%
Junior & Senior DS	1,561	1,576	1,677	1,825	1,923	23%
Nondegree	4	4	6	6	1	-75%
Total MO S&T Full-time Resident Undergraduate	2,937	2,997	3,136	3,328	3,531	20%
Graduate						
Masters& Ed. Spec.	147	124	141	132	137	-7%
Doctoral	44	55	67	66	84	91%
Nondegree	0	1	0	1	0	
Total MO S&T Full-time Resident Graduate	191	180	208	199	221	16%
Total Missouri S&T Full-time Resident Headcount	3,128	3,177	3,344	3,527	3,752	20%
MISSOURI S&T PART-TIME RESIDENT HEADCOUNT						
Undergraduate						
Freshman & Soph DS	46	64	53	52	62	35%
Junior & Senior DS	197	190	239	244	223	13%
Nondegree	95	81	65	41	38	-60%
Total MO S&T Part-time Resident Undergraduate	338	335	357	337	323	-4%
Graduate						
Masters& Ed. Spec.	155	165	201	219	243	57%
Doctoral	24	26	27	33	30	25%
Nondegree	24	37	14	6	7	-71%
Total MO S&T Part-time Resident Graduate	203	228	242	258	280	38%
Total Missouri S&T Part-time Resident Headcount	541	563	599	595	603	11%
MISSOURI S&T TOTAL RESIDENT HEADCOUNT						
Undergraduate						
Freshman & Soph DS	1,418	1,481	1,506	1,549	1,669	18%
Junior & Senior DS	1,758	1,766	1,916	2,069	2,146	22%
Nondegree	99	85	71	47	39	-61%
Total MO S&T Resident Undergraduate	3,275	3,332	3,493	3,665	3,854	18%
Graduate						
Masters& Ed. Spec.	302	289	342	351	380	26%
Doctoral	68	81	94	99	114	68%
Nondegree	24	38	14	7	7	-71%
Total MO S&T Resident Graduate	394	408	450	457	501	27%
Grand Total Missouri S&T Resident Headcount	3,669	3,740	3,943	4,122	4,355	19%

Table 4.3b Non-Resident Headcount History by Student Level, Load, and Campus, Fall 2003 to Fall 2007

Level	2003	2004	2005	2006	2007	5 yr. Change
MISSOURI S&T FULL-TIME NON-RESIDENT HEADCOUNT						
Undergraduate						
Freshman & Soph DS	397	402	395	406	446	12%
Junior & Senior DS	337	334	357	364	397	18%
Nondegree	6	4	4	0	1	-83%
Total MO S&T Full-time Non-Resident Undergraduate	740	740	756	770	844	14%
Graduate						
Masters& Ed. Spec.	407	319	328	336	362	-11%
Doctoral	237	259	234	211	185	-22%
Nondegree	6	5	1	1	0	-100%
Total MO S&T Full-time Non-Resident Graduate	650	583	563	548	547	-16%
Total Missouri S&T Full-time Non-Resident Headcount	1,390	1,323	1,319	1,318	1,391	0%
MISSOURI S&T PART-TIME NON-RESIDENT HEADCOUNT						
Undergraduate						
Freshman & Soph DS	12	13	14	38	12	0%
Junior & Senior DS	26	22	31	39	35	35%
Nondegree	36	12	17	3	7	-81%
Total MO S&T Part-time Non-Resident Undergraduate	74	47	62	80	54	-27%
Graduate						
Masters& Ed. Spec.	237	234	227	287	317	34%
Doctoral	41	37	41	40	45	10%
Nondegree	48	23	8	11	4	-92%
Total MO S&T Part-time Non-Resident Graduate	326	294	276	338	366	12%
Total Missouri S&T Part-time Non-Resident Headcount	400	341	338	418	420	5%
MISSOURI S&T TOTAL NON-RESIDENT HEADCOUNT						
Undergraduate						
Freshman & Soph DS	409	415	409	444	458	12%
Junior & Senior DS	363	356	388	403	432	19%
Nondegree	42	16	21	3	8	-81%
Total MO S&T Non-Resident Undergraduate	814	787	818	850	898	10%
Graduate						
Masters& Ed. Spec.	644	553	555	623	679	5%
Doctoral	278	296	275	251	230	-17%
Nondegree	54	28	9	12	4	-93%
Total MO S&T Non-Resident Graduate	976	877	839	886	913	-6%
Grand Total Missouri S&T Non-Resident Headcount	1,790	1,664	1,657	1,736	1,811	1%

Table 4.4a Resident Headcount History by Student Level, Load, and Campus, Fall 2003 to Fall 2007

Level	2003	2004	2005	2006	2007	5 yr. Change
UNIVERSITY OF MISSOURI-ST. LOUIS FULL-TIME RESIDENT HEADCOUNT						
Undergraduate						
Freshman & Soph DS	1,603	1,428	1,521	1,504	1,497	-7%
Junior & Senior DS	3,416	3,508	3,621	3,521	3,651	7%
Nondegree	82	65	91	107	101	23%
Total UMSL Full-time Resident Undergraduate	5,101	5,001	5,233	5,132	5,249	3%
First Professional						
Optometry (OD)	90	99	87	83	86	-4%
Total UMSL Full-time Resident 1st Professional	90	99	87	83	86	-4%
Graduate						
Masters& Ed. Spec.	326	317	381	361	401	23%
Doctoral	50	37	48	65	59	18%
Nondegree	1	1	8	4	16	1500%
Total UMSL Full-time Resident Graduate	377	355	437	430	476	26%
Total UMSL Full-time Resident Headcount	5,568	5,455	5,757	5,645	5,811	4%
UNIVERSITY OF MISSOURI-ST. LOUIS PART-TIME RESIDENT HEADCOUNT						
Undergraduate						
Freshman & Soph DS	484	451	428	437	379	-22%
Junior & Senior DS	2,862	2,775	2,767	2,593	2,570	-10%
Nondegree	3,433	3,555	3,271	3,397	3,305	-4%
Total UMSL Part-time Resident Undergraduate	6,779	6,781	6,466	6,427	6,254	-8%
First Professional						
Optometry (OD)	0	0	0	0	0	
Total UMSL Part-time Resident 1st Professional	0	0	0	0	0	
Graduate						
Masters& Ed. Spec.	1,621	1,605	1,559	1,578	1,522	-6%
Doctoral	241	250	255	260	282	17%
Nondegree	125	118	79	93	93	-26%
Total UMSL Part-time Resident Graduate	1,987	1,973	1,893	1,931	1,897	-5%
Total UMSL Part-time Resident Headcount	8,766	8,754	8,359	8,358	8,151	-7%
UNIVERSITY OF MISSOURI-ST. LOUIS TOTAL RESIDENT HEADCOUNT						
Undergraduate						
Freshman & Soph DS	2,087	1,879	1,949	1,941	1,876	-10%
Junior & Senior DS	6,278	6,283	6,388	6,114	6,221	-1%
Nondegree	3,515	3,620	3,362	3,504	3,406	-3%
Total UMSL Resident Undergraduate	11,880	11,782	11,699	11,559	11,503	-3%
First Professional						
Optometry (OD)	90	99	87	83	86	-4%
Total UMSL Resident 1st Professional	90	99	87	83	86	-4%
Graduate						
Masters& Ed. Spec.	1,947	1,922	1,940	1,939	1,923	-1%
Doctoral	291	287	303	325	341	17%
Nondegree	126	119	87	97	109	-13%
Total UMSL Resident Graduate	2,364	2,328	2,330	2,361	2,373	0%
Grand Total UMSL Resident Headcount	14,334	14,209	14,116	14,003	13,962	-3%

Table 4.4b Non-Resident Headcount History by Student Level, Load, and Campus, Fall 2003 to Fall 2007

Level	2003	2004	2005	2006	2007	5 yr. Change
UNIVERSITY OF MISSOURI-ST. LOUIS FULL-TIME NON-RESIDENT HEADCOUNT						
Undergraduate						
Freshman & Soph DS	210	205	193	228	231	10%
Junior & Senior DS	319	362	415	387	412	29%
Nondegree	1	1	46	47	51	5000%
Total UMSL Full-time Non-Resident Undergraduate	530	568	654	662	694	31%
First Professional						
Optometry (OD)	69	66	77	90	85	23%
Total UMSL Full-time Non-Resident 1st Professional	69	66	77	90	85	23%
Graduate						
Masters& Ed. Spec.	147	117	135	203	202	37%
Doctoral	68	79	83	65	66	-3%
Nondegree	0	2	5	2	6	
Total UMSL Full-time Non-Resident Graduate	215	198	223	270	274	27%
Total UMSL Full-time Non-Resident Headcount	814	832	954	1,022	1,053	29%
UNIVERSITY OF MISSOURI-ST. LOUIS PART-TIME NON-RESIDENT HEADCOUNT						
Undergraduate						
Freshman & Soph DS	28	27	32	32	29	4%
Junior & Senior DS	152	148	172	170	177	16%
Nondegree	34	47	49	36	29	-15%
Total UMSL Part-time Non-Resident Undergraduate	214	222	253	238	235	10%
First Professional						
Optometry (OD)	0	0	0	0	0	
Total UMSL Part-time Non-Resident 1st Professional	0	0	0	0	0	
Graduate						
Masters& Ed. Spec.	142	134	119	129	148	4%
Doctoral	91	94	99	125	121	33%
Nondegree	4	7	7	11	8	100%
Total UMSL Part-time Non-Resident Graduate	237	235	225	265	277	17%
Total UMSL Part-time Non-Resident Headcount	451	457	478	503	512	14%
UNIVERSITY OF MISSOURI-ST. LOUIS TOTAL NON-RESIDENT HEADCOUNT						
Undergraduate						
Freshman & Soph DS	238	232	225	260	260	9%
Junior & Senior DS	471	510	587	557	589	25%
Nondegree	35	48	95	83	80	129%
Total UMSL Non-Resident Undergraduate	744	790	907	900	929	25%
First Professional						
Optometry (OD)	69	66	77	90	85	23%
Total UMSL Non-Resident 1st Professional	69	66	77	90	85	23%
Graduate						
Masters& Ed. Spec.	289	251	254	332	350	21%
Doctoral	159	173	182	190	187	18%
Nondegree	4	9	12	13	14	250%
Total UMSL Non-Resident Graduate	452	433	448	535	551	22%
Grand Total UMSL Non-Resident Headcount	1,265	1,289	1,432	1,525	1,565	24%

Table 5. Headcount Students by Gender and Ethnicity

Data - Classification	<u>UMC</u>		<u>UMKC</u>		<u>MO S&T</u>		<u>UMSL</u>		<u>TOTAL</u>	
	HC	%	HC	%	HC	%	HC	%	HC	%
A. Gender										
Men										
First-time DS Freshmen	2,266	45%	363	38%	832	80%	195	39%	3,656	49%
Other Undergraduate	8,112	49%	3,413	42%	2,868	77%	4,892	41%	19,285	48%
First Professional	553	50%	779	50%	0	-	71	42%	1,403	50%
Graduate	<u>2,263</u>	40%	<u>1,490</u>	39%	<u>1,076</u>	76%	<u>978</u>	33%	<u>5,807</u>	42%
Total	13,194	46%	6,045	42%	4,776	77%	6,136	40%	30,151	47%
Women										
First-time DS Freshmen	2,716	55%	596	62%	209	20%	303	61%	3,824	51%
Other Undergraduate	8,492	51%	4,722	58%	843	23%	7,042	59%	21,099	52%
First Professional	558	50%	769	50%	0	-	100	58%	1,427	50%
Graduate	<u>3,445</u>	60%	<u>2,310</u>	61%	<u>338</u>	24%	<u>1,946</u>	67%	<u>8,039</u>	58%
Total	15,211	54%	8,397	58%	1,390	23%	9,391	60%	34,389	53%
Grand Total	28,405		14,442		6,166		15,527		64,540	

Table 5. Headcount Students by Gender and Ethnicity (continued)

Data - Classification	<u>UMC</u>		<u>UMKC</u>		<u>MO S&T</u>		<u>UMSL</u>		<u>TOTAL</u>	
	HC	%	HC	%	HC	%	HC	%	HC	%
B. Ethnicity *										
Am Indian/Alaskan Native										
First-time DS Freshmen	23	0%	3	0%	10	1%	1	0%	37	1%
Other Undergraduate	101	1%	60	1%	20	1%	36	0%	217	1%
First Professional	8	1%	5	0%	0	-	1	1%	14	1%
Graduate	<u>35</u>	1%	<u>17</u>	1%	<u>3</u>	0%	<u>10</u>	0%	<u>65</u>	1%
Total	167	1%	85	1%	33	1%	48	0%	333	1%
Asian/Pacific Islander										
First-time DS Freshmen	109	2%	102	12%	23	2%	23	5%	257	4%
Other Undergraduate	459	3%	398	6%	92	3%	344	3%	1,293	3%
First Professional	52	5%	187	15%	0	-	9	6%	248	10%
Graduate	<u>111</u>	2%	<u>81</u>	2%	<u>83</u>	6%	<u>76</u>	3%	<u>351</u>	3%
Total	731	3%	768	6%	198	3%	452	3%	2,149	4%
Black Non-Hispanic										
First-time DS Freshmen	332	7%	168	20%	38	4%	108	24%	646	9%
Other Undergraduate	1,003	6%	943	14%	177	5%	1,667	16%	3,790	10%
First Professional	42	4%	53	4%	0	-	7	4%	102	4%
Graduate	<u>209</u>	4%	<u>333</u>	10%	<u>56</u>	4%	<u>390</u>	15%	<u>988</u>	8%
Total	1,586	6%	1,497	12%	271	5%	2,172	16%	5,526	9%
Hispanic										
First-time DS Freshmen	101	2%	35	4%	23	2%	5	1%	164	2%
Other Undergraduate	278	2%	311	4%	80	2%	198	2%	867	2%
First Professional	21	2%	34	3%	0	-	4	3%	59	2%
Graduate	<u>103</u>	2%	<u>88</u>	3%	<u>36</u>	3%	<u>38</u>	1%	<u>265</u>	2%
Total	503	2%	468	4%	139	2%	245	2%	1,355	2%
White Non-Hispanic										
First-time DS Freshmen	4,196	87%	520	62%	905	90%	286	64%	5,907	83%
Other Undergraduate	14,034	87%	5,063	72%	3,079	86%	8,138	77%	30,314	81%
First Professional	915	88%	999	78%	0	-	133	85%	2,047	82%
Graduate	<u>3,810</u>	70%	<u>2,294</u>	68%	<u>680</u>	50%	<u>1,785</u>	69%	<u>8,569</u>	67%
Total	22,955	84%	8,876	71%	4,664	79%	10,342	75%	46,837	79%
Nonresident Alien										
First-time DS Freshmen	50	1%	14	2%	9	1%	21	5%	94	1%
Other Undergraduate	261	2%	209	3%	113	3%	202	2%	785	2%
First Professional	5	0%	7	1%	0	-	3	2%	15	1%
Graduate	<u>1,137</u>	21%	<u>555</u>	16%	<u>497</u>	37%	<u>279</u>	11%	<u>2,468</u>	19%
Total	1,453	5%	785	6%	619	10%	505	4%	3,362	6%
Grand Total	27,395		12,479		5,924		13,764		59,562	

* Note: Students not reporting ethnicity (Unknown) were removed from the distribution.

Unknown

First-time DS Freshmen	171	117	33	54	375
Other Undergraduate	468	1,151	150	1,349	3,118
First Professional	68	263	0	14	345
Graduate	<u>303</u>	<u>432</u>	<u>59</u>	<u>346</u>	<u>1,140</u>
Total	1,010	1,963	242	1,763	4,978

Source: EMSAS Fall Enrollment file

IR&P/LCB 2/08