

**ENROLLMENT SUMMARY REPORT
FALL 2006**

Dr. La Shonda Carter-Boone
Senior Institutional Research Analyst

Office of Institutional Research & Planning
722 Lewis Hall
University of Missouri System

November 2006

IR&P 2006, Report 8

<http://www.umsystem.edu/ums/departments/fa/planning/>

FALL 2006 ENROLLMENT SUMMARY

Executive Summary

This report summarizes the status and trends in fall enrollment at the University of Missouri's four campuses. The report includes information about enrollment, full-time equivalence, new students on campus, undergraduate transfer students, full/part-time status, gender and ethnicity information.

Please note that enrollment totals in this report follow federal and state guidelines, which recommend that students who are classified as "exclusive auditors" are not included in enrollment figures. Consequently, students who are classified as "exclusive auditors" are not included in the campus totals. (Exclusive auditors are defined as students who are enrolled exclusively in courses that are not taken for credit.)

Highlights of the report include:

- The University of Missouri System enrolled a record 63,783 students in Fall 2006, nearly 400 more than the record 63,384 students that enrolled in Fall 2005. Total enrollment at the University has increased by 5% over the past 5 years (Table 1a).
- In Fall 2006, the University of Missouri enrolled 47,841 undergraduate students (75% of total headcount), 2,784 first professional students (4%), and 13,158 graduate students (21%) (Table 1b).
- From Fall 2005 to Fall 2006, total undergraduate enrollment remained relatively steady and full-time equivalence at the University of Missouri System increased 1% (Table 2.0).
- The University of Missouri System enrolled a total 43,940 full-time and 19,843 part-time students in Fall 2006. Seventy-five percent of all undergraduates were enrolled full-time and 59% of all graduate students were enrolled part-time (Table 4.0).
- Eighty percent of all students enrolled in Fall 2006 at the University of Missouri System were Missouri residents (Table 4.0).
- Women comprised 53% of total enrollment in Fall 2006. UM-St. Louis had the largest percentage of women (61%) and UM-Rolla had the highest proportion of men (77%) (Table 5).
- Of all the students of known ethnicity, under-represented minorities (American Indian/Alaskan Native, African-American, and Hispanic) represented 12% of the University of Missouri System's total enrollment (Table 5).

Technical Notes

These tables provide counts of students enrolled in the fall of 2006 on-schedule credit courses at the four campuses of the University of Missouri. Fall 2005 counts are included in the Table 3 series (3.0-3.4) for comparison purposes. The data used in this report were generated from the EMSAS Fall Enrollment files, which are submitted to the Missouri Department of Higher Education (MDHE) each fall. Data included in EMSAS files were prepared in the admissions and registration offices at the respective campuses. The data are counts as of the census date at each campus, which is defined as the end of the fourth week of classes for the fall session. The source data are based on the reporting guidelines and definitions of the Missouri Department of Higher Education (MDHE) and the National Center for Educational Statistics (NCES).

Each of the tables in the Table 3 and Table 4 series include counts of on- and off-campus students. The columns titled "On-Campus", according to the MDHE guidelines, include students enrolled geographically on campus and students in the Graduate Engineering (Residence) Centers. All other students are counted in the columns headed "Off-Campus", which include students enrolled in extension courses and students that receive H.S advanced credit from the Kansas City and St. Louis campuses. The tables of the Table 3 series also include full-time equivalence (FTE) counts.

Definitions of FTE:

Undergraduate FTE = Total Student Credit Hours/15

Graduate FTE = Total Student Credit Hours/12

Dentistry FTE = Headcount

Law FTE = Total Student Credit Hours/15

UMC Medicine FTE = Headcount

UMKC Medicine FTE = Headcount

Optometry FTE = Headcount

Pharmacy FTE = Headcount

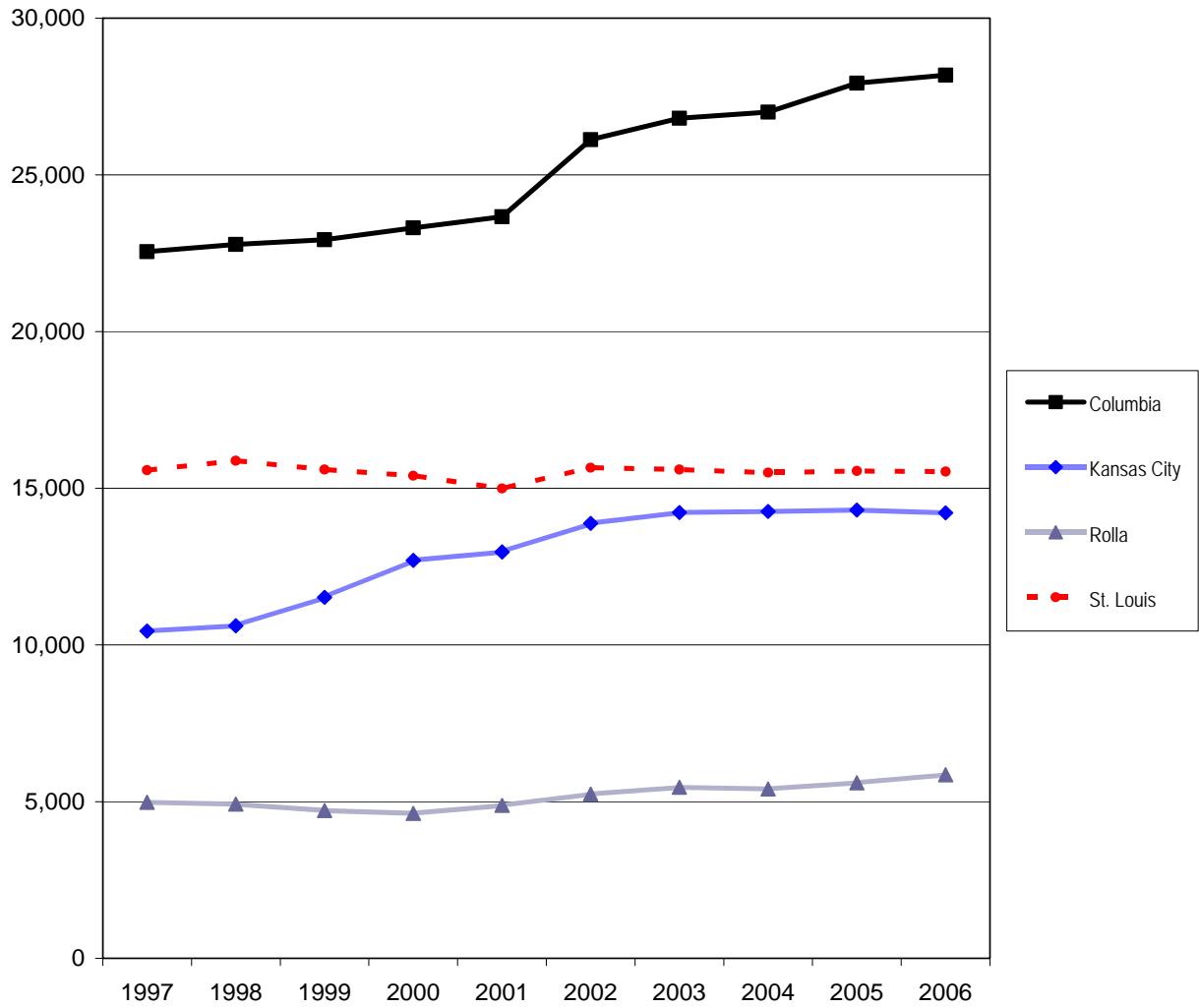
Vet Medicine FTE = Headcount

Caveats

First- and second-year students in the Medicine MD program at UMKC are included in the undergraduate counts of the Table 3 and Table 4 series.

Enrollment counts for students in "Off-Schedule" courses, which include intersession courses, short courses, Video Credit courses, and other courses which begin and end on dates other than those for the regular academic semester, are accumulated during the term in which the courses began and are reported the semester following their end date.

Figure 1. Fall Enrollment History by Campus, 1997 to 2006



Source: EMSAS Fall Enrollment file
IR&P/RS 11/06

Fall Enrollment History by Campus, 1997 to 2006

Campus	1997	1998	1999	2000	2001	2002	2003	2004	2005	2006
Columbia	22,552	22,780	22,930	23,309	23,667	26,124	26,805	27,003	27,930	28,184
Kansas City	10,444	10,611	11,518	12,698	12,969	13,881	14,226	14,256	14,306	14,213
Rolla	4,976	4,918	4,715	4,626	4,883	5,240	5,459	5,404	5,600	5,858
St. Louis	15,575	15,880	15,594	15,397	14,993	15,658	15,599	15,498	15,548	15,528
Total	53,547	54,189	54,757	56,030	56,512	60,903	62,089	62,161	63,384	63,783

Table 1a. Fall Enrollment History by Campus

Campus	2002	2003	2004	2005	2006	5 yr. Change
Columbia	26,124	26,805	27,003	27,930	28,184	8%
Kansas City	13,881	14,226	14,256	14,306	14,213	2%
Rolla	5,240	5,459	5,404	5,600	5,858	12%
St Louis	<u>15,658</u>	<u>15,599</u>	<u>15,498</u>	<u>15,548</u>	<u>15,528</u>	-1%
Total	60,903	62,089	62,161	63,384	63,783	5%

Source: EMSAS Fall Enrollment file

IR&P/LCB 11/06

Table 1b. Fall Enrollment Headcount by Student Level

	Campus				
	Columbia	Kansas City	Rolla	St Louis	Total
Undergraduate*	21,484	9,383	4,515	12,459	47,841
Professional	1,102	1,509		173	2,784
Graduate	5,598	3,321	1,343	2,896	13,158
Grand Total*	28,184	14,213	5,858	15,528	63,783

*The undergraduate total and grand total for UMKC and UMSL include students taking college credit at their high school through dual credit programs. When these students are excluded from the headcount, the grand total for UMKC is 12,174 and the grand total for UMSL is 12,210.

Source: EMSAS Fall Enrollment file

IR&P/LCB 11/06

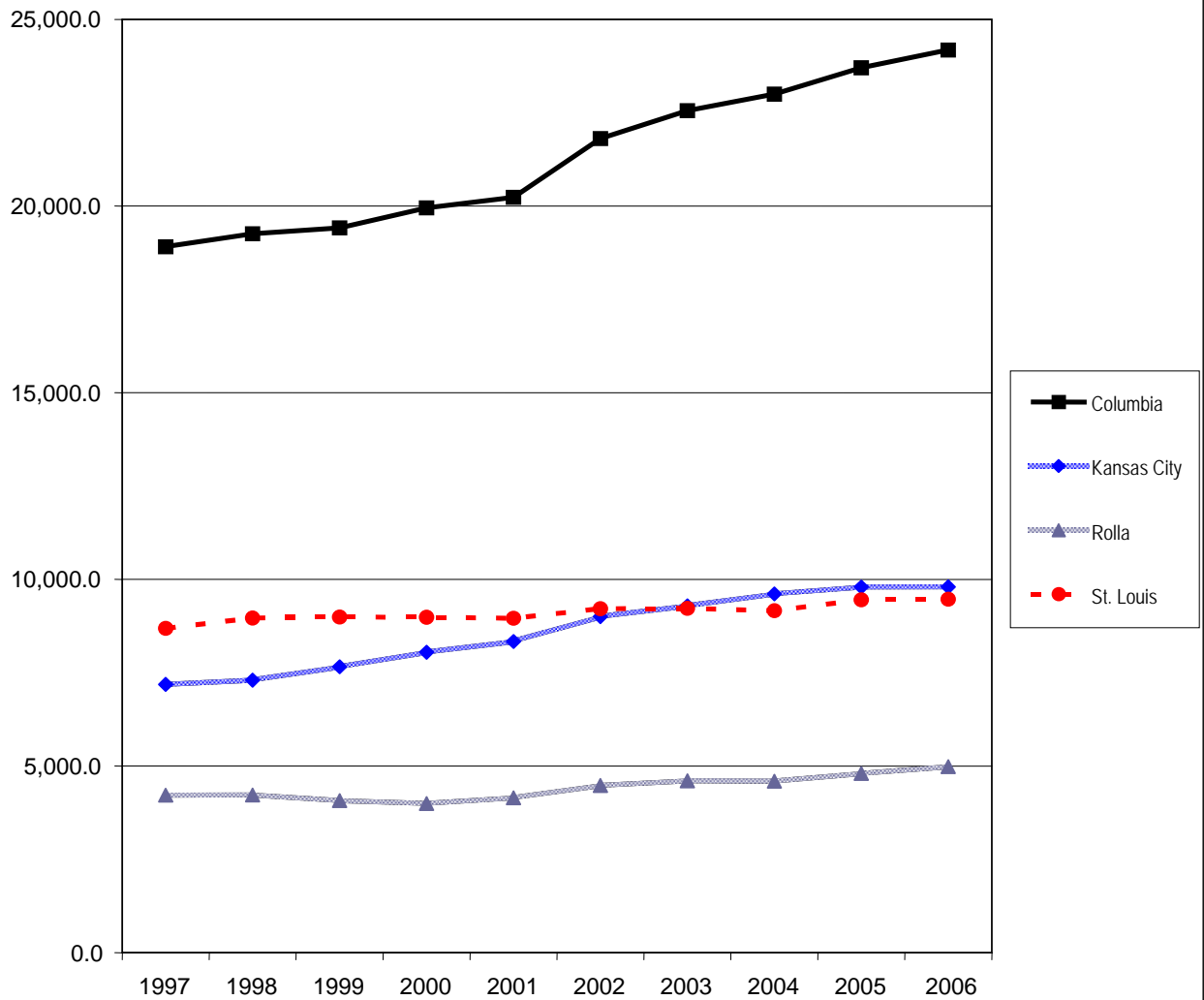
Table 1c. Summary of Fall Enrollments

		Campus				
		Columbia	Kansas City	Rolla	St Louis	Total
Undergraduate	Headcount	21,484	9,383	4,515	12,459	47,841
	Full-time Equivalent	19,780.6	6,527.7	4,199.7	7,872.5	38,380.5
	Resident	18,428	7,271	3,665	11,559	40,923
	Nonresident	3,056	2,112	850	900	6,918
	Full-time	20,225	5,687	4,098	5,794	35,804
	Part-time	1,259	3,696	417	6,665	12,037
Professional	Headcount	1,102	1,509		173	2,784
	Full-time Equivalent	1,083.4	1,495.0		173.0	2,751.4
	Resident	1,039	1,120		83	2,242
	Nonresident	63	389		90	542
	Full-time	1,084	1,481		173	2,738
	Part-time	18	28			46
Graduate	Headcount	5,598	3,321	1,343	2,896	13,158
	Full-time Equivalent	3,318.7	1,775.3	782.8	1,422.0	7,298.8
	Resident	3,280	1,878	457	2,361	7,976
	Nonresident	2,318	1,443	886	535	5,182
	Full-time	2,801	1,150	747	700	5,398
	Part-time	2,797	2,171	596	2,196	7,760
Grand Totals	Headcount	28,184	14,213	5,858	15,528	63,783
	Full-time Equivalent	24,182.7	9,797.9	4,982.6	9,467.5	48,430.7
	Resident	22,747	10,269	4,122	14,003	51,141
	Nonresident	5,437	3,944	1,736	1,525	12,642
	Full-time	24,110	8,318	4,845	6,667	43,940
	Part-time	4,074	5,895	1,013	8,861	19,843

Source: EMSAS Fall Enrollment file

IR&P/LCB 11/06

Figure 2. Full-time Equivalence History by Campus, 1997 to 2006



Source: EMSAS Fall Enrollment file
IR&P/RS 11/06

Full-time Equivalent History by Campus, 1997 to 2006

Campus	1997	1998	1999	2000	2001	2002	2003	2004	2005	2006
Columbia	18,909.0	19,259.0	19,412.0	19,950.0	20,231.0	21,804.0	22,556.0	23,000.0	23,703.6	24,182.7
Kansas City	7,184.0	7,300.0	7,656.0	8,049.0	8,334.0	9,001.0	9,290.0	9,607.7	9,795.3	9,797.9
Rolla	4,219.0	4,225.0	4,070.0	3,997.0	4,148.0	4,481.0	4,604.0	4,594.1	4,799.9	4,982.6
St. Louis	8,689.0	8,965.0	8,994.0	8,986.0	8,958.0	9,214.0	9,224.0	9,162.0	9,451.9	9,467.5
Total	39,001.0	39,749.0	40,132.0	40,982.0	41,671.0	44,500.0	45,674.0	46,363.8	47,750.7	48,430.7

Table 2.0 Headcounts, Full-Time Equivalence, and Student Credit Hours

	UM System											
	On-Campus				Off-Campus				Total			
	FS05	FS06	Change #	Change %	FS05	FS06	Change #	Change %	FS05	FS06	Change #	Change %
Headcount by Student Level												
Undergraduate												
Freshman & Sophomore DS	17,577	17,570	-7	0%	19	15	-4	-21%	17,596	17,585	-11	0%
Junior & Senior DS	23,702	23,876	174	1%	153	147	-6	-4%	23,855	24,023	168	1%
Nondegree	<u>763</u>	<u>784</u>	<u>21</u>	3%	<u>5,525</u>	<u>5,449</u>	<u>-76</u>	-1%	<u>6,288</u>	<u>6,233</u>	<u>-55</u>	-1%
Total	42,042	42,230	188	0%	5,697	5,611	-86	-2%	47,739	47,841	102	0%
First Professional												
Dentistry (DDS)	388	393	5	1%	0	0	0		388	393	5	1%
Law (JD)	972	971	-1	0%	0	0	0		972	971	-1	0%
Medicine (MD)	736	738	2	0%	0	0	0		736	738	2	0%
Optometry (OD)	164	173	9	5%	0	0	0		164	173	9	5%
Pharmacy (DPharm)	243	238	-5	-2%	0	0	0		243	238	-5	-2%
Vet. Med. (DVM)	<u>267</u>	<u>271</u>	<u>4</u>	1%	<u>0</u>	<u>0</u>	<u>0</u>		<u>267</u>	<u>271</u>	<u>4</u>	1%
Total	2,770	2,784	14	1%	0	0	0		2,770	2,784	14	1%
Graduate												
Masters & Ed. Spec.	7,350	7,456	106	1%	1,202	1,321	119	10%	8,552	8,777	225	3%
Doctoral	3,356	3,376	20	1%	113	112	-1	-1%	3,469	3,488	19	1%
Nondegree	<u>446</u>	<u>430</u>	<u>-16</u>	-4%	<u>408</u>	<u>463</u>	<u>55</u>	13%	<u>854</u>	<u>893</u>	<u>39</u>	5%
Total	11,152	11,262	110	1%	1,723	1,896	173	10%	12,875	13,158	283	2%
Grand Total	55,964	56,276	312	1%	7,420	7,507	87	1%	63,384	63,783	399	1%
FTE Enrollments by Student Level												
Undergraduate	36,122.5	36,575.6	453.1	1%	1,803.6	1,804.9	1.3	0%	37,926.1	38,380.5	454.4	1%
First Professional	2,730.0	2,751.4	21.4	1%	0.0	0.0	0.0		2,730.0	2,751.4	21.4	1%
Graduate	<u>6,400.3</u>	<u>6,573.4</u>	<u>173.1</u>	3%	<u>694.3</u>	<u>725.3</u>	<u>31.1</u>	4%	<u>7,094.5</u>	<u>7,298.7</u>	<u>204.2</u>	3%
Total	45,252.8	45,900.3	647.6	1%	2,497.9	2,530.2	32.4	1%	47,750.6	48,430.6	679.9	1%
SCH Produced by Student Level												
Undergraduate	541,837	548,634	6,797	1%	27,055	27,074	19	0%	568,892	575,708	6,816	1%
First Professional	47,501	48,162	661	1%	0	0	0		47,501	48,162	661	1%
Graduate	<u>76,804</u>	<u>78,881</u>	<u>2,078</u>	3%	<u>8,331</u>	<u>8,704</u>	<u>373</u>	4%	<u>85,135</u>	<u>87,585</u>	<u>2,451</u>	3%
Total	666,142	675,677	9,536	1%	35,386	35,778	392	1%	701,528	711,455	9,928	1%

Source: EMSAS Fall Enrollment file

IR&P/LCB 11/06

Table 2.1 Headcounts, Full-Time Equivalence, and Student Credit Hours

	UM-Columbia											
	On-Campus				Off-Campus				Total			
	FS05	FS06	Change		FS05	FS06	Change		FS05	FS06	Change	
		#	%			#	%			#	%	
Headcount by Student Level												
Undergraduate												
Freshman & Sophomore DS	10,633	10,501	-132	-1%	9	10	1	11%	10,642	10,511	-131	-1%
Junior & Senior DS	10,268	10,588	320	3%	108	105	-3	-3%	10,376	10,693	317	3%
Nondegree	<u>225</u>	<u>209</u>	<u>-16</u>	<u>-7%</u>	<u>92</u>	<u>71</u>	<u>-21</u>	<u>-23%</u>	<u>317</u>	<u>280</u>	<u>-37</u>	<u>-12%</u>
Total	21,126	21,298	172	1%	209	186	-23	-11%	21,335	21,484	149	1%
First Professional												
Law (JD)	444	456	12	3%	0	0	0		444	456	12	3%
Medicine (MD)	372	375	3	1%	0	0	0		372	375	3	1%
Vet. Med. (DVM)	<u>267</u>	<u>271</u>	<u>4</u>	<u>1%</u>	<u>0</u>	<u>0</u>	<u>0</u>		<u>267</u>	<u>271</u>	<u>4</u>	<u>1%</u>
Total	1,083	1,102	19	2%	0	0	0		1,083	1,102	19	2%
Graduate												
Masters & Ed. Spec.	2,196	2,160	-36	-2%	695	800	105	15%	2,891	2,960	69	2%
Doctoral	1,990	2,019	29	1%	82	82	0	0%	2,072	2,101	29	1%
Nondegree	<u>223</u>	<u>185</u>	<u>-38</u>	<u>-17%</u>	<u>326</u>	<u>352</u>	<u>26</u>	<u>8%</u>	<u>549</u>	<u>537</u>	<u>-12</u>	<u>-2%</u>
Total	4,409	4,364	-45	-1%	1,103	1,234	131	12%	5,512	5,598	86	2%
Grand Total	26,618	26,764	146	1%	1,312	1,420	108	8%	27,930	28,184	254	1%
FTE Enrollments by Student Level												
Undergraduate	19,372.1	19,712.3	340.2	2%	67.7	68.3	0.6	1%	19,439.8	19,780.6	340.8	2%
First Professional	1,066.2	1,083.4	17.2	2%	0.0	0.0	0.0		1,066.2	1,083.4	17.2	2%
Graduate	<u>2,770.1</u>	<u>2,820.9</u>	<u>50.8</u>	<u>2%</u>	<u>427.5</u>	<u>497.8</u>	<u>70.3</u>	<u>16%</u>	<u>3,197.6</u>	<u>3,318.7</u>	<u>121.1</u>	<u>4%</u>
Total	23,208.4	23,616.6	408.2	2%	495.2	566.1	70.8	14%	23,703.6	24,182.6	479.0	2%
SCH Produced by Student Level												
Undergraduate	290,581	295,684	5,103	2%	1,016	1,025	9	1%	291,597	296,709	5,112	2%
First Professional	17,050	17,792	743	4%	0	0	0		17,050	17,792	743	4%
Graduate	<u>33,241</u>	<u>33,851</u>	<u>610</u>	<u>2%</u>	<u>5,130</u>	<u>5,973</u>	<u>843</u>	<u>16%</u>	<u>38,371</u>	<u>39,824</u>	<u>1,453</u>	<u>4%</u>
Total	340,872	347,327	6,456	2%	6,146	6,998	852	14%	347,018	354,325	7,308	2%

Source: EMSAS Fall Enrollment file

IR&P/LCB.CB 11/06

Table 2.2 Headcounts, Full-Time Equivalence, and Student Credit Hours

	UM-Kansas City											
	On-Campus				Off-Campus				Total			
	FS05	FS06	Change		FS05	FS06	Change		FS05	FS06	Change	
#			%	#			%	#			%	
Headcount by Student Level												
Undergraduate												
Freshman & Sophomore DS	2,865	2,880	15	1%	0	0	0		2,865	2,880	15	1%
Junior & Senior DS	4,200	4,187	-13	0%	0	0	0		4,200	4,187	-13	0%
Nondegree	<u>273</u>	<u>284</u>	<u>11</u>	4%	<u>2,149</u>	<u>2,032</u>	<u>-117</u>	-5%	<u>2,422</u>	<u>2,316</u>	<u>-106</u>	-4%
Total	7,338	7,351	13	0%	2,149	2,032	-117	-5%	9,487	9,383	-104	-1%
First Professional												
Dentistry (DDS)	388	393	5	1%	0	0	0		388	393	5	1%
Law (JD)	528	515	-13	-2%	0	0	0		528	515	-13	-2%
Medicine (MD)	364	363	-1	0%	0	0	0		364	363	-1	0%
Pharmacy (DPharm)	<u>243</u>	<u>238</u>	<u>-5</u>	-2%	<u>0</u>	<u>0</u>	<u>0</u>		<u>243</u>	<u>238</u>	<u>-5</u>	-2%
Total	1,523	1,509	-14	-1%	0	0	0		1,523	1,509	-14	-1%
Graduate												
Masters & Ed. Spec.	2,570	2,571	1	0%	0	1	1		2,570	2,572	2	0%
Doctoral	543	522	-21	-4%	0	0	0		543	522	-21	-4%
Nondegree	<u>142</u>	<u>143</u>	<u>1</u>	1%	<u>41</u>	<u>84</u>	<u>43</u>	105%	<u>183</u>	<u>227</u>	<u>44</u>	24%
Total	3,255	3,236	-19	-1%	41	85	44	107%	3,296	3,321	25	1%
Grand Total	12,116	12,096	-20	0%	2,190	2,117	-73	-3%	14,306	14,213	-93	-1%
FTE Enrollments by Student Level												
Undergraduate	6,012.1	6,032.3	20.2	0%	527.7	495.3	-32.4	-6%	6,539.8	6,527.6	-12.1	0%
First Professional	1,499.8	1,495.0	-4.8	0%	0.0	0.0	0.0		1,499.8	1,495.0	-4.8	0%
Graduate	<u>1,746.7</u>	<u>1,760.3</u>	<u>13.6</u>	1%	<u>9.0</u>	<u>14.9</u>	<u>5.9</u>	66%	<u>1,755.7</u>	<u>1,775.2</u>	<u>19.5</u>	1%
Total	9,258.6	9,287.6	29.0	0%	536.7	510.2	-26.5	-5%	9,795.3	9,797.8	2.6	0%
SCH Produced by Student Level												
Undergraduate	90,181	90,485	304	0%	7,916	7,430	-486	-6%	98,097	97,915	-182	0%
First Professional	27,113	26,941	-172	-1%	0	0	0		27,113	26,941	-172	-1%
Graduate	<u>20,961</u>	<u>21,124</u>	<u>164</u>	1%	<u>108</u>	<u>179</u>	<u>71</u>	66%	<u>21,069</u>	<u>21,303</u>	<u>235</u>	1%
Total	138,254	138,550	296	0%	8,024	7,609	-415	-5%	146,278	146,159	-119	0%

Source: EMSAS Fall Enrollment file

IR&P/LCB 11/06

Table 2.3 Headcounts, Full-Time Equivalence, and Student Credit Hours

	UM-Rolla											
	On-Campus				Off-Campus				Total			
	FS05	FS06	Change		FS05	FS06	Change		FS05	FS06	Change	
#			%	#			%	#			%	
Headcount by Student Level												
Undergraduate												
Freshman & Sophomore DS	1,915	1,993	78	4%	0	0	0	0%	1,915	1,993	78	4%
Junior & Senior DS	2,304	2,472	168	7%	0	0	0	0%	2,304	2,472	168	7%
Nondegree	<u>29</u>	<u>34</u>	<u>5</u>	17%	<u>63</u>	<u>16</u>	<u>-47</u>	-75%	<u>92</u>	<u>50</u>	<u>-42</u>	-46%
Total	4,248	4,499	251	6%	63	16	-47	-75%	4,311	4,515	204	5%
Graduate												
Masters & Ed. Spec.	487	540	53	11%	410	434	24	6%	897	974	77	9%
Doctoral	357	338	-19	-5%	12	12	0	0%	369	350	-19	-5%
Nondegree	<u>8</u>	<u>12</u>	<u>4</u>	50%	<u>15</u>	<u>7</u>	<u>-8</u>	-53%	<u>23</u>	<u>19</u>	<u>-4</u>	-17%
Total	852	890	38	4%	437	453	16	4%	1,289	1,343	54	4%
Grand Total	5,100	5,389	289	6%	500	469	-31	-6%	5,600	5,858	258	5%
FTE Enrollments by Student Level												
Undergraduate	3,986.6	4,196.7	210.1	5%	13.4	3.1	-10.3	-77%	4,000.0	4,199.7	199.7	5%
Graduate	<u>587.9</u>	<u>615.2</u>	<u>27.3</u>	5%	<u>212.0</u>	<u>167.7</u>	<u>-44.3</u>	-21%	<u>799.9</u>	<u>782.8</u>	<u>-17.1</u>	-2%
Total	4,574.5	4,811.8	237.3	5%	225.4	170.7	-54.7	-24%	4,799.9	4,982.6	182.7	4%
SCH Produced by Student Level												
Undergraduate	59,799	62,950	3,151	5%	201	46	-155	-77%	60,000	62,996	2,996	5%
Graduate	<u>7,055</u>	<u>7,382</u>	<u>327</u>	5%	<u>2,544</u>	<u>2,012</u>	<u>-532</u>	-21%	<u>9,599</u>	<u>9,394</u>	<u>-205</u>	-2%
Total	66,854	70,332	3,478	5%	2,745	2,058	-687	-25%	69,599	72,390	2,791	4%

Source: EMSAS Fall Enrollment file

IR&P/LCB 11/06

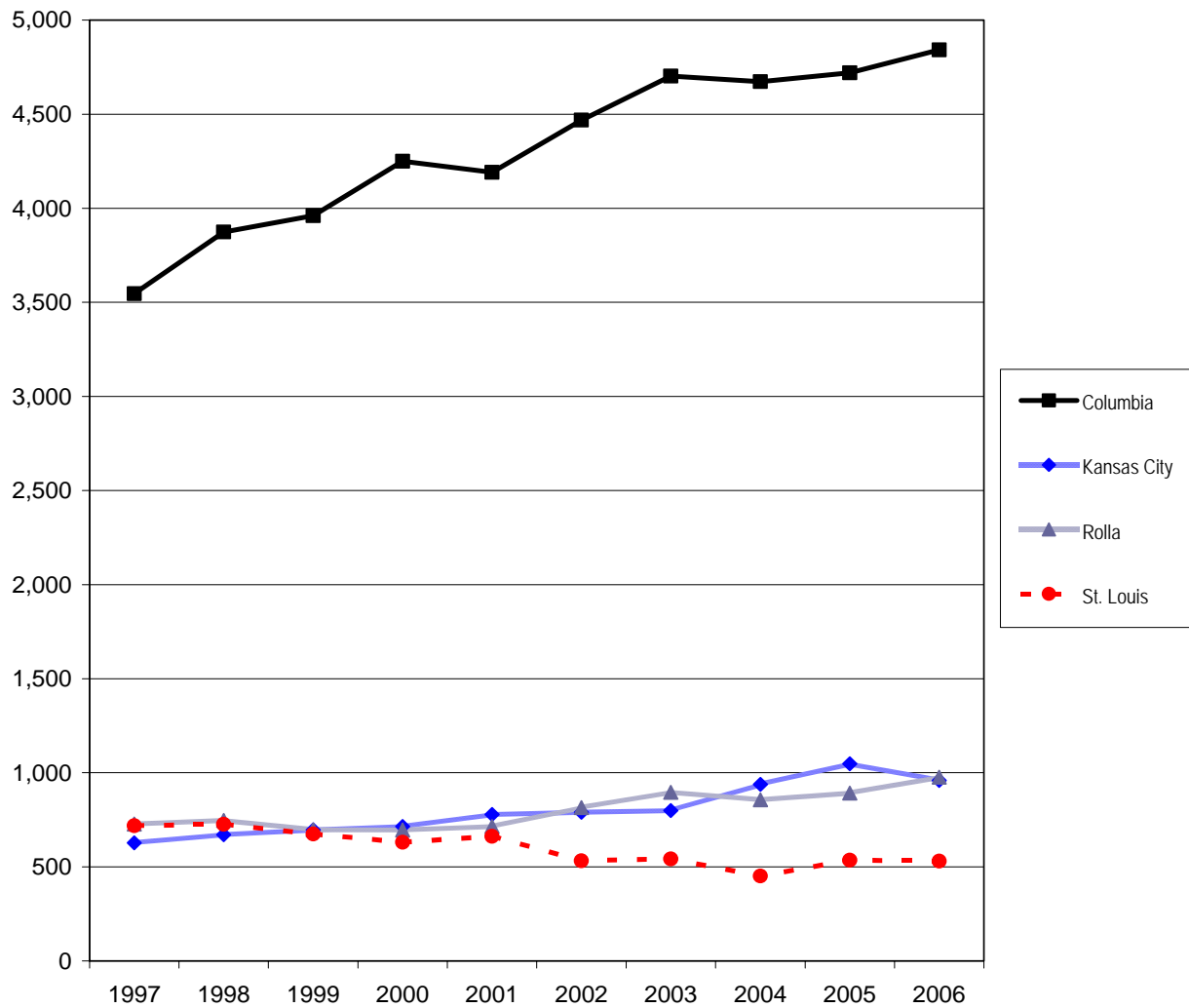
Table 2.4 Headcounts, Full-Time Equivalence, and Student Credit Hours

	UM-St. Louis											
	On-Campus				Off-Campus				Total			
	FS05	FS06	Change		FS05	FS06	Change		FS05	FS06	Change	
		#	%			#	%			#	%	
Headcount by Student Level												
Undergraduate												
Freshman & Sophomore DS	2,164	2,196	32	1%	10	5	-5	-50%	2,174	2,201	27	1%
Junior & Senior DS	6,930	6,629	-301	-4%	45	42	-3	-7%	6,975	6,671	-304	-4%
Nondegree	<u>236</u>	<u>257</u>	<u>21</u>	9%	<u>3,221</u>	<u>3,330</u>	<u>109</u>	3%	<u>3,457</u>	<u>3,587</u>	<u>130</u>	4%
Total	9,330	9,082	-248	-3%	3,276	3,377	101	3%	12,606	12,459	-147	-1%
First Professional												
Optometry (OD)	<u>164</u>	<u>173</u>	<u>9</u>	5%	<u>0</u>	<u>0</u>	<u>0</u>		<u>164</u>	<u>173</u>	<u>9</u>	5%
Total	164	173	9	5%	0	0	0		164	173	9	5%
Graduate												
Masters & Ed. Spec.	2,097	2,185	88	4%	97	86	-11	-11%	2,194	2,271	77	4%
Doctoral	466	497	31	7%	19	18	-1	-5%	485	515	30	6%
Nondegree	<u>73</u>	<u>90</u>	<u>17</u>	23%	<u>26</u>	<u>20</u>	<u>-6</u>	-23%	<u>99</u>	<u>110</u>	<u>11</u>	11%
Total	2,636	2,772	136	5%	142	124	-18	-13%	2,778	2,896	118	4%
Grand Total	12,130	12,027	-103	-1%	3,418	3,501	83	2%	15,548	15,528	-20	0%
FTE Enrollments by Student Level												
Undergraduate	6,751.7	6,634.3	-117.4	-2%	1,194.8	1,238.2	43.4	4%	7,946.5	7,872.5	-74.0	-1%
First Professional	164.0	173.0	9.0	5%	0.0	0.0	0.0		164.0	173.0	9.0	5%
Graduate	<u>1,295.6</u>	<u>1,377.0</u>	<u>81.4</u>	6%	<u>45.8</u>	<u>45.0</u>	<u>-0.8</u>	-2%	<u>1,341.3</u>	<u>1,422.0</u>	<u>80.7</u>	6%
Total	8,211.3	8,184.3	-27.0	0%	1,240.6	1,283.2	42.7	3%	9,451.9	9,467.5	15.7	0%
SCH Produced by Student Level												
Undergraduate	101,276	99,515	-1,761	-2%	17,922	18,573	651	4%	119,198	118,088	-1,110	-1%
First Professional	3,339	3,429	90	3%	0	0	0		3,339	3,429	90	3%
Graduate	<u>15,547</u>	<u>16,524</u>	<u>977</u>	6%	<u>549</u>	<u>540</u>	<u>-9</u>	-2%	<u>16,096</u>	<u>17,064</u>	<u>968</u>	6%
Total	120,162	119,468	-694	-1%	18,471	19,113	642	3%	138,633	138,581	-52	0%

Source: EMSAS Fall Enrollment file

IR&P/LCB 11/06

Figure 3a. First-time College Freshmen History, 1997 to 2006

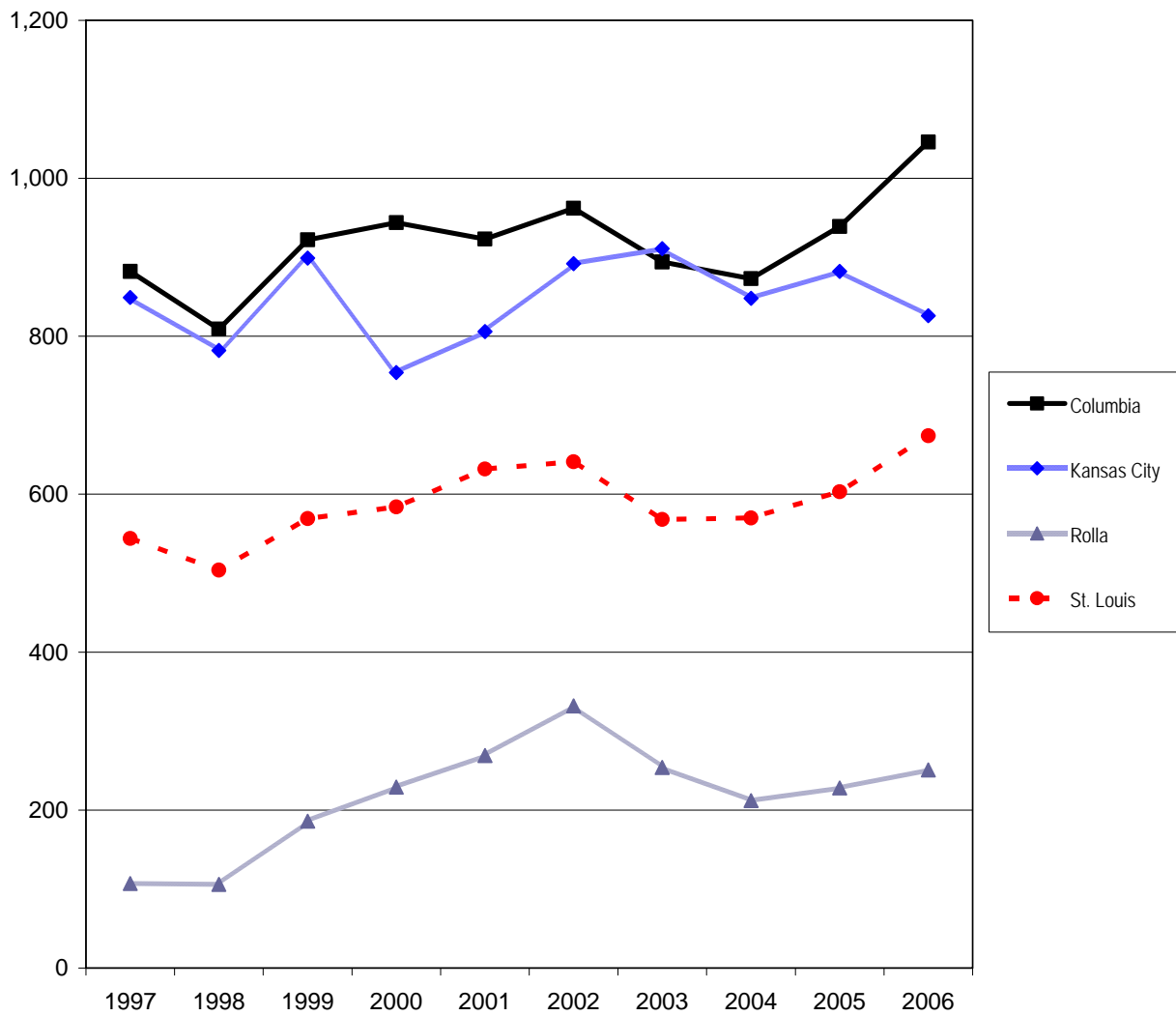


Source: EMSAS Fall Enrollment file
IR&P/RS 11/06

First-time College Freshmen History, 1997 to 2006

Campus	1997	1998	1999	2000	2001	2002	2003	2004	2005	2006
Columbia	3,546	3,874	3,961	4,250	4,191	4,468	4,702	4,673	4,720	4,842
Kansas City	628	671	696	715	778	790	799	939	1,048	959
Rolla	728	747	697	696	715	815	897	856	892	977
St. Louis	719	726	674	631	663	533	542	451	536	530
Total	5,621	6,018	6,028	6,292	6,347	6,606	6,940	6,919	7,196	7,308

Figure 3b. New Graduate Student History by Campus, 1997 to 2006

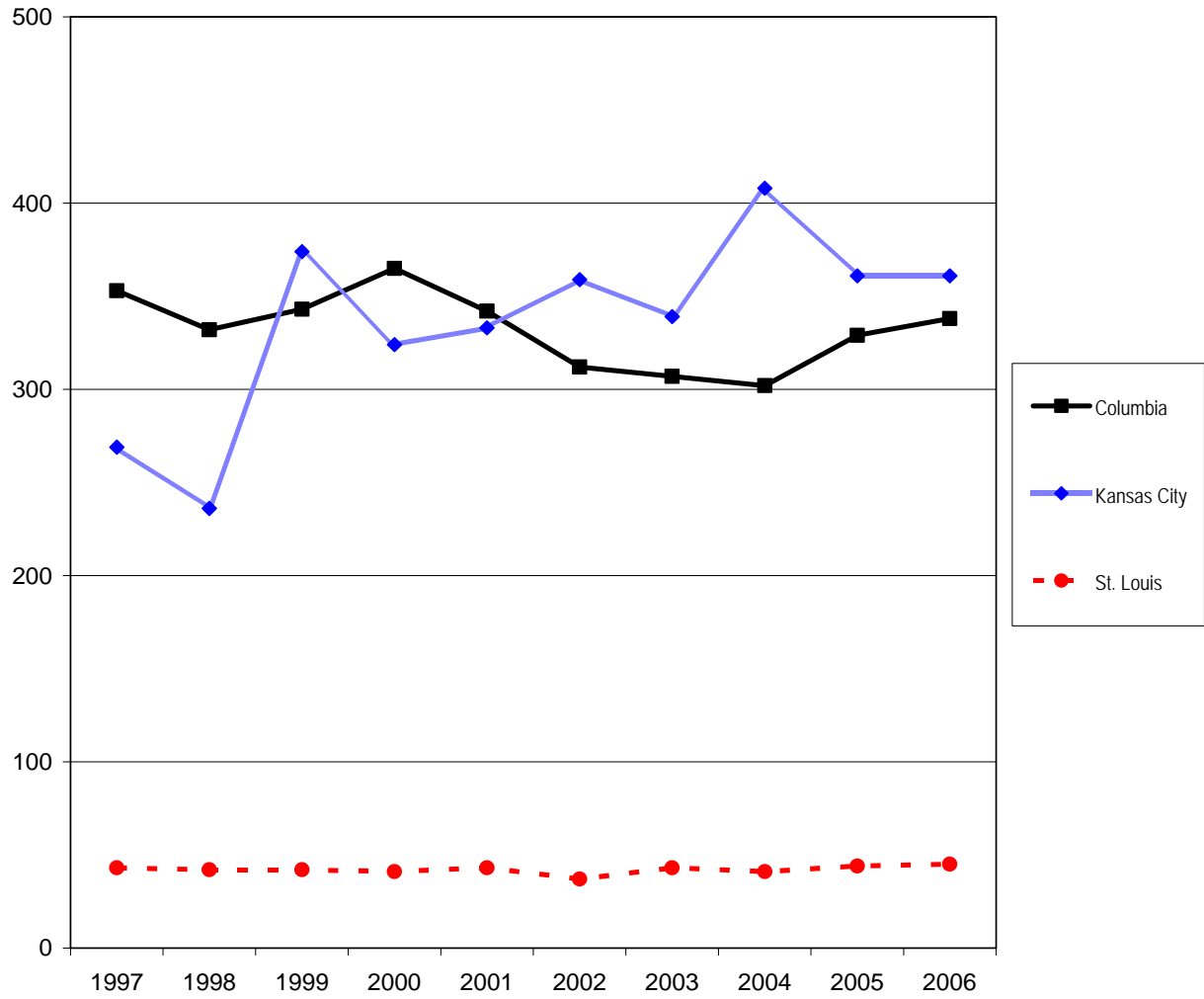


Source: EMSAS Fall Enrollment file
IR&P/RS 11/06

New Graduate Student History by Campus, 1997 to 2006

Campus	1997	1998	1999	2000	2001	2002	2003	2004	2005	2006
Columbia	882	809	922	944	923	962	894	873	939	1,046
Kansas City	849	782	899	754	806	892	911	848	882	826
Rolla	107	106	186	229	269	332	254	212	228	251
St. Louis	544	504	569	584	632	641	568	570	603	674
Total	2,382	2,201	2,576	2,511	2,630	2,827	2,627	2,503	2,652	2,797

Figure 3c. New First Professional Student History by Campus, 1997 to 2006



Source: EMSAS Fall Enrollment file
IR&P/RS 11/06

New First Professional Student History by Campus, 1997 to 2006

Campus	1997	1998	1999	2000	2001	2002	2003	2004	2005	2006
Columbia	353	332	343	365	342	312	307	302	329	338
Kansas City	269	236	374	324	333	359	339	408	361	361
St. Louis	43	42	42	41	43	37	43	41	44	45
Total	665	610	759	730	718	708	689	751	734	744

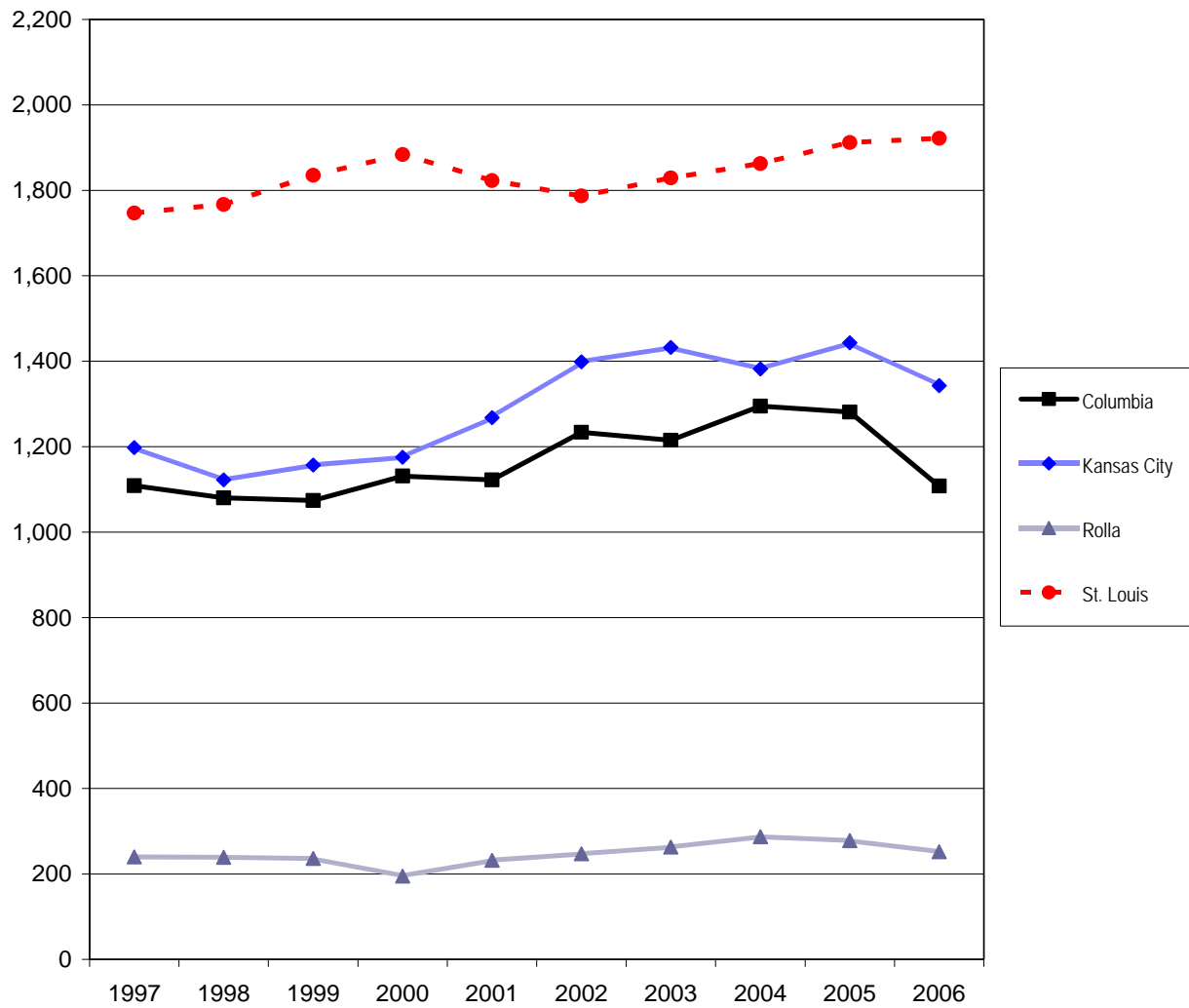
Table 3. On-Campus New Student Headcount, Fall 2002 - Fall 2006

		2002	2003	2004	2005	2006	5 yr. Change
Columbia							
Freshmen	Degree-Seeking	4,439	4,669	4,668	4,718	4,836	9%
	Non Degree-Seeking	29	33	5	2	6	-79%
Undergraduate Transfers	Degree-Seeking	1,124	1,122	1,217	1,178	1,030	-8%
	Non Degree-Seeking	110	93	78	103	78	-29%
Professional	Degree-Seeking	312	307	302	329	338	8%
Graduate	Degree-Seeking	833	803	770	841	940	13%
	Non Degree-Seeking	129	91	103	98	106	-18%
Kansas City							
Freshmen	Degree-Seeking	780	788	921	1,039	955	22%
	Non Degree-Seeking	10	11	18	9	4	-60%
Undergraduate Transfers	Degree-Seeking	1,197	1,265	1,246	1,302	1,176	-2%
	Non Degree-Seeking	202	167	136	141	167	-17%
Professional	Degree-Seeking	359	339	408	361	361	1%
Graduate	Degree-Seeking	768	806	766	801	768	0%
	Non Degree-Seeking	124	105	82	81	58	-53%
Rolla							
Freshmen	Degree-Seeking	795	878	842	884	962	21%
	Non Degree-Seeking	20	19	14	8	15	-25%
Undergraduate Transfers	Degree-Seeking	231	254	279	273	248	7%
	Non Degree-Seeking	16	9	8	5	4	-75%
Graduate	Degree-Seeking	324	237	242	225	242	-25%
	Non Degree-Seeking	8	17	13	3	9	13%
St Louis							
Freshmen	Degree-Seeking	519	534	449	531	525	1%
	Non Degree-Seeking	14	8	2	5	5	-64%
Undergraduate Transfers	Degree-Seeking	1,613	1,728	1,752	1,762	1,763	9%
	Non Degree-Seeking	174	101	111	150	159	-9%
Professional	Degree-Seeking	37	43	41	44	45	22%
Graduate	Degree-Seeking	615	540	547	576	621	1%
	Non Degree-Seeking	26	28	23	27	53	104%

Source: EMSAS Fall Enrollment file

IR&P/LCB 11/06

Figure 4. First-time On-Campus Undergraduate Transfer Student History by Campus, 1997 to 2006



Source: EMSAS Fall Enrollment file
IR&P/RS 11/06

First-time On-Campus Undergraduate Transfer Student History by Campus, 1997 to 2006

Campus	1997	1998	1999	2000	2001	2002	2003	2004	2005	2006
Columbia	1,109	1,080	1,074	1,131	1,122	1,234	1,215	1,295	1,281	1,108
Kansas City	1,198	1,122	1,157	1,175	1,268	1,399	1,432	1,382	1,443	1,343
Rolla	240	239	236	195	232	247	263	287	278	252
St. Louis	1,747	1,767	1,835	1,884	1,823	1,787	1,829	1,863	1,912	1,922
Total	4,294	4,208	4,302	4,385	4,445	4,667	4,739	4,827	4,914	4,625

Table 4.0 Full-Time, Part-Time, Resident, and Nonresident Students

Student Level	Residency	UM System									% Full-Time	% Resident
		On-Campus			Off-Campus			Total				
		Full-Time	Part-Time	Total	Full-Time	Part-Time	Total	Full-Time	Part-Time	Total		
Undergraduate												
Freshman & Soph DS	Resident	13,412	928	14,340	0	14	14	13,412	942	14,354	94%	82%
	Nonresident	<u>3,051</u>	<u>179</u>	<u>3,230</u>	<u>0</u>	<u>1</u>	<u>1</u>	<u>3,051</u>	<u>180</u>	<u>3,231</u>		
	Total	16,463	1,107	17,570	0	15	15	16,463	1,122	17,585		
Junior & Senior DS	Resident	16,322	4,214	20,536	13	112	125	16,335	4,326	20,661	80%	86%
	Nonresident	<u>2,784</u>	<u>556</u>	<u>3,340</u>	<u>2</u>	<u>20</u>	<u>22</u>	<u>2,786</u>	<u>576</u>	<u>3,362</u>		
	Total	19,106	4,770	23,876	15	132	147	19,121	4,902	24,023		
Nondegree	Resident	50	496	546	74	5,288	5,362	124	5,784	5,908	4%	95%
	Nonresident	<u>94</u>	<u>144</u>	<u>238</u>	<u>2</u>	<u>85</u>	<u>87</u>	<u>96</u>	<u>229</u>	<u>325</u>		
	Total	144	640	784	76	5,373	5,449	220	6,013	6,233		
Total Undergrad.	Resident	29,784	5,638	35,422	87	5,414	5,501	29,871	11,052	40,923	75%	86%
	Nonresident	<u>5,929</u>	<u>879</u>	<u>6,808</u>	<u>4</u>	<u>106</u>	<u>110</u>	<u>5,933</u>	<u>985</u>	<u>6,918</u>		
	Total	35,713	6,517	42,230	91	5,520	5,611	35,804	12,037	47,841		
First Professional												
Dentistry (DDS)	Resident	252	0	252	0	0	0	252	0	252	100%	64%
	Nonresident	<u>141</u>	<u>0</u>	<u>141</u>	<u>0</u>	<u>0</u>	<u>0</u>	<u>141</u>	<u>0</u>	<u>141</u>		
	Total	393	0	393	0	0	0	393	0	393		
Law (JD)	Resident	778	35	813	0	0	0	778	35	813	96%	84%
	Nonresident	<u>151</u>	<u>7</u>	<u>158</u>	<u>0</u>	<u>0</u>	<u>0</u>	<u>151</u>	<u>7</u>	<u>158</u>		
	Total	929	42	971	0	0	0	929	42	971		
Medicine (MD)	Resident	611	1	612	0	0	0	611	1	612	100%	83%
	Nonresident	<u>126</u>	<u>0</u>	<u>126</u>	<u>0</u>	<u>0</u>	<u>0</u>	<u>126</u>	<u>0</u>	<u>126</u>		
	Total	737	1	738	0	0	0	737	1	738		
Optometry (OD)	Resident	83	0	83	0	0	0	83	0	83	100%	48%
	Nonresident	<u>90</u>	<u>0</u>	<u>90</u>	<u>0</u>	<u>0</u>	<u>0</u>	<u>90</u>	<u>0</u>	<u>90</u>		
	Total	173	0	173	0	0	0	173	0	173		
Pharmacy (DPharm)	Resident	225	0	225	0	0	0	225	0	225	100%	95%
	Nonresident	<u>13</u>	<u>0</u>	<u>13</u>	<u>0</u>	<u>0</u>	<u>0</u>	<u>13</u>	<u>0</u>	<u>13</u>		
	Total	238	0	238	0	0	0	238	0	238		
Vet. Med. (DVM)	Resident	254	3	257	0	0	0	254	3	257	99%	95%
	Nonresident	<u>14</u>	<u>0</u>	<u>14</u>	<u>0</u>	<u>0</u>	<u>0</u>	<u>14</u>	<u>0</u>	<u>14</u>		
	Total	268	3	271	0	0	0	268	3	271		
Total First Prof.	Resident	2,203	39	2,242	0	0	0	2,203	39	2,242	98%	81%
	Nonresident	<u>535</u>	<u>7</u>	<u>542</u>	<u>0</u>	<u>0</u>	<u>0</u>	<u>535</u>	<u>7</u>	<u>542</u>		
	Total	2,738	46	2,784	0	0	0	2,738	46	2,784		
Graduate												
Masters & Ed. Spec.	Resident	1,972	2,994	4,966	112	630	742	2,084	3,624	5,708	43%	65%
	Nonresident	<u>1,630</u>	<u>860</u>	<u>2,490</u>	<u>67</u>	<u>512</u>	<u>579</u>	<u>1,697</u>	<u>1,372</u>	<u>3,069</u>		
	Total	3,602	3,854	7,456	179	1,142	1,321	3,781	4,996	8,777		
Doctoral	Resident	514	1,014	1,528	2	89	91	516	1,103	1,619	44%	46%
	Nonresident	<u>1,019</u>	<u>829</u>	<u>1,848</u>	<u>0</u>	<u>21</u>	<u>21</u>	<u>1,019</u>	<u>850</u>	<u>1,869</u>		
	Total	1,533	1,843	3,376	2	110	112	1,535	1,953	3,488		
Nondegree	Resident	44	314	358	4	287	291	48	601	649	9%	73%
	Nonresident	<u>29</u>	<u>43</u>	<u>72</u>	<u>5</u>	<u>167</u>	<u>172</u>	<u>34</u>	<u>210</u>	<u>244</u>		
	Total	73	357	430	9	454	463	82	811	893		
Total Graduate	Resident	2,530	4,322	6,852	118	1,006	1,124	2,648	5,328	7,976	41%	61%
	Nonresident	<u>2,678</u>	<u>1,732</u>	<u>4,410</u>	<u>72</u>	<u>700</u>	<u>772</u>	<u>2,750</u>	<u>2,432</u>	<u>5,182</u>		
	Total	5,208	6,054	11,262	190	1,706	1,896	5,398	7,760	13,158		
Grand Total	Resident	34,517	9,999	44,516	205	6,420	6,625	34,722	16,419	51,141	69%	80%
	Nonresident	<u>9,142</u>	<u>2,618</u>	<u>11,760</u>	<u>76</u>	<u>806</u>	<u>882</u>	<u>9,218</u>	<u>3,424</u>	<u>12,642</u>		
	Total	43,659	12,617	56,276	281	7,226	7,507	43,940	19,843	63,783		

Source: EMSAS Fall Enrollment file

IR&P/LCB 11/06

Table 4.1 Full-Time, Part-Time, Resident, and Nonresident Students

Student Level	Residency	UM-Columbia									% Full-Time	% Resident
		On-Campus			Off-Campus			Total				
		Full-Time	Part-Time	Total	Full-Time	Part-Time	Total	Full-Time	Part-Time	Total		
Undergraduate												
Freshman & Soph DS	Resident	8,463	208	8,671	0	9	9	8,463	217	8,680	98%	83%
	Nonresident	<u>1,790</u>	<u>40</u>	<u>1,830</u>	<u>0</u>	<u>1</u>	<u>1</u>	<u>1,790</u>	<u>41</u>	<u>1,831</u>		
	Total	10,253	248	10,501	0	10	10	10,253	258	10,511		
Junior & Senior DS	Resident	8,837	621	9,458	8	77	85	8,845	698	9,543	93%	89%
	Nonresident	<u>1,092</u>	<u>38</u>	<u>1,130</u>	<u>2</u>	<u>18</u>	<u>20</u>	<u>1,094</u>	<u>56</u>	<u>1,150</u>		
	Total	9,929	659	10,588	10	95	105	9,939	754	10,693		
Nondegree	Resident	0	163	163	1	41	42	1	204	205	12%	73%
	Nonresident	<u>32</u>	<u>14</u>	<u>46</u>	<u>0</u>	<u>29</u>	<u>29</u>	<u>32</u>	<u>43</u>	<u>75</u>		
	Total	32	177	209	1	70	71	33	247	280		
Total Undergrad.	Resident	17,300	992	18,292	9	127	136	17,309	1,119	18,428	94%	86%
	Nonresident	<u>2,914</u>	<u>92</u>	<u>3,006</u>	<u>2</u>	<u>48</u>	<u>50</u>	<u>2,916</u>	<u>140</u>	<u>3,056</u>		
	Total	20,214	1,084	21,298	11	175	186	20,225	1,259	21,484		
First Professional												
Law (JD)	Resident	404	13	417	0	0	0	404	13	417	97%	91%
	Nonresident	<u>38</u>	<u>1</u>	<u>39</u>	<u>0</u>	<u>0</u>	<u>0</u>	<u>38</u>	<u>1</u>	<u>39</u>		
	Total	442	14	456	0	0	0	442	14	456		
Medicine (MD)	Resident	364	1	365	0	0	0	364	1	365	100%	97%
	Nonresident	<u>10</u>	<u>0</u>	<u>10</u>	<u>0</u>	<u>0</u>	<u>0</u>	<u>10</u>	<u>0</u>	<u>10</u>		
	Total	374	1	375	0	0	0	374	1	375		
Vet. Med. (DVM)	Resident	254	3	257	0	0	0	254	3	257	99%	95%
	Nonresident	<u>14</u>	<u>0</u>	<u>14</u>	<u>0</u>	<u>0</u>	<u>0</u>	<u>14</u>	<u>0</u>	<u>14</u>		
	Total	268	3	271	0	0	0	268	3	271		
Total First Prof.	Resident	1,022	17	1,039	0	0	0	1,022	17	1,039	98%	94%
	Nonresident	<u>62</u>	<u>1</u>	<u>63</u>	<u>0</u>	<u>0</u>	<u>0</u>	<u>62</u>	<u>1</u>	<u>63</u>		
	Total	1,084	18	1,102	0	0	0	1,084	18	1,102		
Graduate												
Masters & Ed. Spec.	Resident	1,009	410	1,419	103	398	501	1,112	808	1,920	59%	65%
	Nonresident	<u>608</u>	<u>133</u>	<u>741</u>	<u>38</u>	<u>261</u>	<u>299</u>	<u>646</u>	<u>394</u>	<u>1,040</u>		
	Total	1,617	543	2,160	141	659	800	1,758	1,202	2,960		
Doctoral	Resident	336	591	927	0	67	67	336	658	994	47%	47%
	Nonresident	<u>643</u>	<u>449</u>	<u>1,092</u>	<u>0</u>	<u>15</u>	<u>15</u>	<u>643</u>	<u>464</u>	<u>1,107</u>		
	Total	979	1,040	2,019	0	82	82	979	1,122	2,101		
Nondegree	Resident	34	126	160	4	202	206	38	328	366	12%	68%
	Nonresident	<u>21</u>	<u>4</u>	<u>25</u>	<u>5</u>	<u>141</u>	<u>146</u>	<u>26</u>	<u>145</u>	<u>171</u>		
	Total	55	130	185	9	343	352	64	473	537		
Total Graduate	Resident	1,379	1,127	2,506	107	667	774	1,486	1,794	3,280	50%	59%
	Nonresident	<u>1,272</u>	<u>586</u>	<u>1,858</u>	<u>43</u>	<u>417</u>	<u>460</u>	<u>1,315</u>	<u>1,003</u>	<u>2,318</u>		
	Total	2,651	1,713	4,364	150	1,084	1,234	2,801	2,797	5,598		
Grand Total	Resident	19,701	2,136	21,837	116	794	910	19,817	2,930	22,747	86%	81%
	Nonresident	<u>4,248</u>	<u>679</u>	<u>4,927</u>	<u>45</u>	<u>465</u>	<u>510</u>	<u>4,293</u>	<u>1,144</u>	<u>5,437</u>		
	Total	23,949	2,815	26,764	161	1,259	1,420	24,110	4,074	28,184		

Source: EMSAS Fall Enrollment file

IR&P/LCB 11/06

Table 4.2 Full-Time, Part-Time, Resident, and Nonresident Students

		<u>UM-Kansas City</u>										
Student Level	Residency	<u>On-Campus</u>			<u>Off-Campus</u>			<u>Total</u>			% Full-Time	% Resident
		Full-Time	Part-Time	Total	Full-Time	Part-Time	Total	Full-Time	Part-Time	Total		
Undergraduate												
Freshman & Soph DS	Resident	1,948	236	2,184	0	0	0	1,948	236	2,184	89%	76%
	Nonresident	<u>627</u>	<u>69</u>	<u>696</u>	<u>0</u>	<u>0</u>	<u>0</u>	<u>627</u>	<u>69</u>	<u>696</u>		
	Total	2,575	305	2,880	0	0	0	2,575	305	2,880		
Junior & Senior DS	Resident	2,144	791	2,935	0	0	0	2,144	791	2,935	74%	70%
	Nonresident	<u>941</u>	<u>311</u>	<u>1,252</u>	<u>0</u>	<u>0</u>	<u>0</u>	<u>941</u>	<u>311</u>	<u>1,252</u>		
	Total	3,085	1,102	4,187	0	0	0	3,085	1,102	4,187		
Nondegree	Resident	9	145	154	1	1,997	1,998	10	2,142	2,152	1%	93%
	Nonresident	<u>17</u>	<u>113</u>	<u>130</u>	<u>0</u>	<u>34</u>	<u>34</u>	<u>17</u>	<u>147</u>	<u>164</u>		
	Total	26	258	284	1	2,031	2,032	27	2,289	2,316		
Total Undergrad.	Resident	4,101	1,172	5,273	1	1,997	1,998	4,102	3,169	7,271	61%	77%
	Nonresident	<u>1,585</u>	<u>493</u>	<u>2,078</u>	<u>0</u>	<u>34</u>	<u>34</u>	<u>1,585</u>	<u>527</u>	<u>2,112</u>		
	Total	5,686	1,665	7,351	1	2,031	2,032	5,687	3,696	9,383		
First Professional												
Dentistry (DDS)	Resident	252	0	252	0	0	0	252	0	252	100%	64%
	Nonresident	<u>141</u>	<u>0</u>	<u>141</u>	<u>0</u>	<u>0</u>	<u>0</u>	<u>141</u>	<u>0</u>	<u>141</u>		
	Total	393	0	393	0	0	0	393	0	393		
Law (JD)	Resident	374	22	396	0	0	0	374	22	396	95%	77%
	Nonresident	<u>113</u>	<u>6</u>	<u>119</u>	<u>0</u>	<u>0</u>	<u>0</u>	<u>113</u>	<u>6</u>	<u>119</u>		
	Total	487	28	515	0	0	0	487	28	515		
Medicine (MD)	Resident	247	0	247	0	0	0	247	0	247	100%	68%
	Nonresident	<u>116</u>	<u>0</u>	<u>116</u>	<u>0</u>	<u>0</u>	<u>0</u>	<u>116</u>	<u>0</u>	<u>116</u>		
	Total	363	0	363	0	0	0	363	0	363		
Pharmacy (DPharm)	Resident	225	0	225	0	0	0	225	0	225	100%	95%
	Nonresident	<u>13</u>	<u>0</u>	<u>13</u>	<u>0</u>	<u>0</u>	<u>0</u>	<u>13</u>	<u>0</u>	<u>13</u>		
	Total	238	0	238	0	0	0	238	0	238		
Total First Prof.	Resident	1,098	22	1,120	0	0	0	1,098	22	1,120	98%	74%
	Nonresident	<u>383</u>	<u>6</u>	<u>389</u>	<u>0</u>	<u>0</u>	<u>0</u>	<u>383</u>	<u>6</u>	<u>389</u>		
	Total	1,481	28	1,509	0	0	0	1,481	28	1,509		
Graduate												
Masters & Ed. Spec.	Resident	479	1,019	1,498	0	0	0	479	1,019	1,498	39%	58%
	Nonresident	<u>512</u>	<u>561</u>	<u>1,073</u>	<u>0</u>	<u>1</u>	<u>1</u>	<u>512</u>	<u>562</u>	<u>1,074</u>		
	Total	991	1,580	2,571	0	1	1	991	1,581	2,572		
Doctoral	Resident	49	152	201	0	0	0	49	152	201	29%	39%
	Nonresident	<u>100</u>	<u>221</u>	<u>321</u>	<u>0</u>	<u>0</u>	<u>0</u>	<u>100</u>	<u>221</u>	<u>321</u>		
	Total	149	373	522	0	0	0	149	373	522		
Nondegree	Resident	5	107	112	0	67	67	5	174	179	4%	79%
	Nonresident	<u>5</u>	<u>26</u>	<u>31</u>	<u>0</u>	<u>17</u>	<u>17</u>	<u>5</u>	<u>43</u>	<u>48</u>		
	Total	10	133	143	0	84	84	10	217	227		
Total Graduate	Resident	533	1,278	1,811	0	67	67	533	1,345	1,878	35%	57%
	Nonresident	<u>617</u>	<u>808</u>	<u>1,425</u>	<u>0</u>	<u>18</u>	<u>18</u>	<u>617</u>	<u>826</u>	<u>1,443</u>		
	Total	1,150	2,086	3,236	0	85	85	1,150	2,171	3,321		
Grand Total	Resident	5,732	2,472	8,204	1	2,064	2,065	5,733	4,536	10,269	59%	72%
	Nonresident	<u>2,585</u>	<u>1,307</u>	<u>3,892</u>	<u>0</u>	<u>52</u>	<u>52</u>	<u>2,585</u>	<u>1,359</u>	<u>3,944</u>		
	Total	8,317	3,779	12,096	1	2,116	2,117	8,318	5,895	14,213		

Source: EMSAS Fall Enrollment file

IR&P/LCB 11/06

Table 4.3 Full-Time, Part-Time, Resident, and Nonresident Students

Student Level	Residency	UM-Rolla									% Full-Time	% Resident
		On-Campus			Off-Campus			Total				
		Full-Time	Part-Time	Total	Full-Time	Part-Time	Total	Full-Time	Part-Time	Total		
Undergraduate												
Freshman & Soph DS	Resident	1,497	52	1,549	0	0	0	1,497	52	1,549	95%	78%
	Nonresident	<u>406</u>	<u>38</u>	<u>444</u>	<u>0</u>	<u>0</u>	<u>0</u>	<u>406</u>	<u>38</u>	<u>444</u>		
	Total	1,903	90	1,993	0	0	0	1,903	90	1,993		
Junior & Senior DS	Resident	1,825	244	2,069	0	0	0	1,825	244	2,069	89%	84%
	Nonresident	<u>364</u>	<u>39</u>	<u>403</u>	<u>0</u>	<u>0</u>	<u>0</u>	<u>364</u>	<u>39</u>	<u>403</u>		
	Total	2,189	283	2,472	0	0	0	2,189	283	2,472		
Nondegree	Resident	6	27	33	0	14	14	6	41	47	12%	94%
	Nonresident	<u>0</u>	<u>1</u>	<u>1</u>	<u>0</u>	<u>2</u>	<u>2</u>	<u>0</u>	<u>3</u>	<u>3</u>		
	Total	6	28	34	0	16	16	6	44	50		
Total Undergrad.	Resident	3,328	323	3,651	0	14	14	3,328	337	3,665	91%	81%
	Nonresident	<u>770</u>	<u>78</u>	<u>848</u>	<u>0</u>	<u>2</u>	<u>2</u>	<u>770</u>	<u>80</u>	<u>850</u>		
	Total	4,098	401	4,499	0	16	16	4,098	417	4,515		
Graduate												
Masters	Resident	124	64	188	8	155	163	132	219	351	48%	36%
	Nonresident	<u>308</u>	<u>44</u>	<u>352</u>	<u>28</u>	<u>243</u>	<u>271</u>	<u>336</u>	<u>287</u>	<u>623</u>		
	Total	432	108	540	36	398	434	468	506	974		
Doctoral	Resident	66	26	92	0	7	7	66	33	99	79%	28%
	Nonresident	<u>211</u>	<u>35</u>	<u>246</u>	<u>0</u>	<u>5</u>	<u>5</u>	<u>211</u>	<u>40</u>	<u>251</u>		
	Total	277	61	338	0	12	12	277	73	350		
Nondegree	Resident	1	2	3	0	4	4	1	6	7	11%	37%
	Nonresident	<u>1</u>	<u>8</u>	<u>9</u>	<u>0</u>	<u>3</u>	<u>3</u>	<u>1</u>	<u>11</u>	<u>12</u>		
	Total	2	10	12	0	7	7	2	17	19		
Total Graduate	Resident	191	92	283	8	166	174	199	258	457	56%	34%
	Nonresident	<u>520</u>	<u>87</u>	<u>607</u>	<u>28</u>	<u>251</u>	<u>279</u>	<u>548</u>	<u>338</u>	<u>886</u>		
	Total	711	179	890	36	417	453	747	596	1,343		
Grand Total	Resident	3,519	415	3,934	8	180	188	3,527	595	4,122	83%	70%
	Nonresident	<u>1,290</u>	<u>165</u>	<u>1,455</u>	<u>28</u>	<u>253</u>	<u>281</u>	<u>1,318</u>	<u>418</u>	<u>1,736</u>		
	Total	4,809	580	5,389	36	433	469	4,845	1,013	5,858		

Source: EMSAS Fall Enrollment file

IR&P/LCB 11/06

Table 4.4 Full-Time, Part-Time, Resident, and Nonresident Students

Student Level	Residency	UM-St. Louis											% Full-Time	% Resident
		On-Campus			Off-Campus			Total						
		Full-Time	Part-Time	Total	Full-Time	Part-Time	Total	Full-Time	Part-Time	Total				
Undergraduate														
Freshman & Soph DS	Resident	1,504	432	1,936	0	5	5	1,504	437	1,941	79%	88%		
	Nonresident	<u>228</u>	<u>32</u>	<u>260</u>	<u>0</u>	<u>0</u>	<u>0</u>	<u>228</u>	<u>32</u>	<u>260</u>				
	Total	1,732	464	2,196	0	5	5	1,732	469	2,201				
Junior & Senior DS	Resident	3,516	2,558	6,074	5	35	40	3,521	2,593	6,114	59%	92%		
	Nonresident	<u>387</u>	<u>168</u>	<u>555</u>	<u>0</u>	<u>2</u>	<u>2</u>	<u>387</u>	<u>170</u>	<u>557</u>				
	Total	3,903	2,726	6,629	5	37	42	3,908	2,763	6,671				
Nondegree	Resident	35	161	196	72	3,236	3,308	107	3,397	3,504	4%	98%		
	Nonresident	<u>45</u>	<u>16</u>	<u>61</u>	<u>2</u>	<u>20</u>	<u>22</u>	<u>47</u>	<u>36</u>	<u>83</u>				
	Total	80	177	257	74	3,256	3,330	154	3,433	3,587				
Total Undergrad.	Resident	5,055	3,151	8,206	77	3,276	3,353	5,132	6,427	11,559	47%	93%		
	Nonresident	<u>660</u>	<u>216</u>	<u>876</u>	<u>2</u>	<u>22</u>	<u>24</u>	<u>662</u>	<u>238</u>	<u>900</u>				
	Total	5,715	3,367	9,082	79	3,298	3,377	5,794	6,665	12,459				
First Professional														
Optometry (OD)	Resident	83	0	83	0	0	0	83	0	83	100%	48%		
	Nonresident	<u>90</u>	<u>0</u>	<u>90</u>	<u>0</u>	<u>0</u>	<u>0</u>	<u>90</u>	<u>0</u>	<u>90</u>				
	Total	173	0	173	0	0	0	173	0	173				
Total First Prof.	Resident	83	0	83	0	0	0	83	0	83	100%	48%		
	Nonresident	<u>90</u>	<u>0</u>	<u>90</u>	<u>0</u>	<u>0</u>	<u>0</u>	<u>90</u>	<u>0</u>	<u>90</u>				
	Total	173	0	173	0	0	0	173	0	173				
Graduate														
Masters	Resident	360	1,501	1,861	1	77	78	361	1,578	1,939	25%	85%		
	Nonresident	<u>202</u>	<u>122</u>	<u>324</u>	<u>1</u>	<u>7</u>	<u>8</u>	<u>203</u>	<u>129</u>	<u>332</u>				
	Total	562	1,623	2,185	2	84	86	564	1,707	2,271				
Doctoral	Resident	63	245	308	2	15	17	65	260	325	25%	63%		
	Nonresident	<u>65</u>	<u>124</u>	<u>189</u>	<u>0</u>	<u>1</u>	<u>1</u>	<u>65</u>	<u>125</u>	<u>190</u>				
	Total	128	369	497	2	16	18	130	385	515				
Nondegree	Resident	4	79	83	0	14	14	4	93	97	5%	88%		
	Nonresident	<u>2</u>	<u>5</u>	<u>7</u>	<u>0</u>	<u>6</u>	<u>6</u>	<u>2</u>	<u>11</u>	<u>13</u>				
	Total	6	84	90	0	20	20	6	104	110				
Total Graduate	Resident	427	1,825	2,252	3	106	109	430	1,931	2,361	24%	82%		
	Nonresident	<u>269</u>	<u>251</u>	<u>520</u>	<u>1</u>	<u>14</u>	<u>15</u>	<u>270</u>	<u>265</u>	<u>535</u>				
	Total	696	2,076	2,772	4	120	124	700	2,196	2,896				
Grand Total	Resident	5,565	4,976	10,541	80	3,382	3,462	5,645	8,358	14,003	43%	90%		
	Nonresident	<u>1,019</u>	<u>467</u>	<u>1,486</u>	<u>3</u>	<u>36</u>	<u>39</u>	<u>1,022</u>	<u>503</u>	<u>1,525</u>				
	Total	6,584	5,443	12,027	83	3,418	3,501	6,667	8,861	15,528				

Source: EMSAS Fall Enrollment file

IR&P/LCB 11/06

Table 5. Headcount Students by Gender and Ethnicity

Data - Classification	UMC		UMKC		UMR		UMSL		TOTAL	
	HC	%	HC	%	HC	%	HC	%	HC	%
A. Gender										
Men										
First-time DS Freshmen	2,252	47%	396	41%	745	77%	224	43%	3,617	50%
Other Undergraduate	8,209	49%	3,489	41%	2,754	78%	4,730	40%	19,182	47%
First Professional	547	50%	757	50%	0	-	70	40%	1,374	49%
Graduate	<u>2,271</u>	41%	<u>1,323</u>	40%	<u>1,033</u>	77%	<u>1,050</u>	36%	<u>5,677</u>	43%
Total	13,279	47%	5,965	42%	4,532	77%	6,074	39%	29,850	47%
Women										
First-time DS Freshmen	2,585	53%	559	59%	217	23%	301	57%	3,662	50%
Other Undergraduate	8,438	51%	4,939	59%	799	22%	7,204	60%	21,380	53%
First Professional	555	50%	752	50%	0	-	103	60%	1,410	51%
Graduate	<u>3,327</u>	59%	<u>1,998</u>	60%	<u>310</u>	23%	<u>1,846</u>	64%	<u>7,481</u>	57%
Total	14,905	53%	8,248	58%	1,326	23%	9,454	61%	33,933	53%
Grand Total	28,184		14,213		5,858		15,528		63,783	
B. Ethnicity *										
Am Indian/Alaskan Native										
First-time DS Freshmen	20	0%	6	1%	3	0%	2	0%	31	0%
Other Undergraduate	107	1%	55	1%	16	0%	32	0%	210	1%
First Professional	7	1%	8	1%	1	-	2	1%	18	1%
Graduate	<u>35</u>	1%	<u>23</u>	1%	<u>0</u>	0%	<u>7</u>	0%	<u>65</u>	1%
Total	169	1%	92	1%	20	0%	43	0%	324	1%
Asian/Pacific Islander										
First-time DS Freshmen	138	3%	88	10%	24	3%	20	4%	270	4%
Other Undergraduate	438	3%	426	6%	79	2%	328	3%	1,271	3%
First Professional	62	6%	193	14%	0	-	6	4%	261	10%
Graduate	<u>109</u>	2%	<u>75</u>	2%	<u>95</u>	7%	<u>78</u>	3%	<u>357</u>	3%
Total	747	3%	782	6%	198	4%	432	3%	2,159	4%
Black Non-Hispanic										
First-time DS Freshmen	355	8%	181	20%	44	5%	104	22%	684	10%
Other Undergraduate	946	6%	1,008	13%	156	5%	1,564	14%	3,674	10%
First Professional	44	4%	51	4%	0	-	7	4%	102	4%
Graduate	<u>201</u>	4%	<u>300</u>	10%	<u>45</u>	4%	<u>362</u>	14%	<u>908</u>	8%
Total	1,546	6%	1,540	12%	245	4%	2,037	14%	5,368	9%
Hispanic										
First-time DS Freshmen	104	2%	47	5%	19	2%	8	2%	178	3%
Other Undergraduate	277	2%	307	4%	83	2%	189	2%	856	2%
First Professional	18	2%	28	2%	0	-	3	2%	49	2%
Graduate	<u>98</u>	2%	<u>75</u>	2%	<u>35</u>	3%	<u>43</u>	2%	<u>251</u>	2%
Total	497	2%	457	4%	137	2%	243	2%	1,334	2%
White Non-Hispanic										
First-time DS Freshmen	3,987	86%	551	62%	812	87%	320	67%	5,670	82%
Other Undergraduate	14,089	88%	5,450	73%	2,987	88%	8,505	79%	31,031	82%
First Professional	894	87%	1,053	78%	0	-	138	86%	2,085	82%
Graduate	<u>3,583</u>	69%	<u>2,045</u>	68%	<u>624</u>	49%	<u>1,882</u>	71%	<u>8,134</u>	67%
Total	22,553	84%	9,099	72%	4,423	79%	10,845	77%	46,920	79%
Nonresident Alien										
First-time DS Freshmen	43	1%	17	2%	32	3%	23	5%	115	2%
Other Undergraduate	235	1%	233	3%	85	2%	195	2%	748	2%
First Professional	6	1%	11	1%	0	-	5	3%	22	1%
Graduate	<u>1,130</u>	22%	<u>487</u>	16%	<u>468</u>	37%	<u>278</u>	10%	<u>2,363</u>	20%
Total	1,414	5%	748	6%	585	10%	501	4%	3,248	5%
Grand Total	26,926		12,718		5,608		14,101		59,353	
* Note: Students not reporting ethnicity (Unknown) were removed from the distribution.										
Unknown										
First-time DS Freshmen	190		65		28		48		331	
Other Undergraduate	555		949		147		1,121		2,772	
First Professional	71		165		0		12		248	
Graduate	<u>442</u>		<u>316</u>		<u>75</u>		<u>246</u>		<u>1,079</u>	
Total	1,258		1,495		250		1,427		4,430	

Source: EMSAS Fall Enrollment file

IR&P/LCB 11/06