

**The 2016-2017 Report of Degrees Awarded
by the University of Missouri**

Randy Sade
Research Analyst

Office of Institutional Research
University of Missouri System

September 2017

UM-IR 2017, Report 1

<http://www.umsystem.edu/ums/fa/ir/>

The 2016-2017 Report of Degrees Awarded by the University of Missouri

Executive Summary

This report includes graphs and tables of degrees awarded by each campus since FY 2008. The first table provides a summary of degrees by level for each campus, while the second table series gives the number of awards by the colleges of each campus. The *Department Detail Summary* reflects the number of degrees awarded by academic department. These tables also show the average number of degrees over a 3, 5, & 10-year period and the percent change in FY 2017 that is relative to the 10-year average.

The highlights of the report from the Table 1 series include:

- The University of Missouri System awarded 18,426 degrees and certificates, a 12% growth in FY 2017 relative to the 10-year average.
- Relative to the 10-year average, the number of FY 2017 doctorate degrees for the University of Missouri System increased 31% and graduate certificates increased 35%.
- Comparing FY 2017 degrees to the 10-year averages, the most notable increases are: bachelors degrees awarded are up 15% at UM-Columbia and 18% at Missouri S&T; master degrees are up 8% at UM-Columbia and 14% at Missouri S&T; and doctorates are up 30% at UM-Kansas City, and 51% at Missouri S&T.
- First Professional degrees at UM-Kansas City increased 4% when comparing FY 2017 to the 10-year average.
- Based on the 10-year averages, Graduate Certificates continues to grow in FY 2017 with a 46% increase at UM-Columbia, 37% increase at UM-Kansas City, and a 39% increase at UM-St. Louis.

Notes Regarding Use of the Report:

- The official annual reporting period is from July 1 to June 30 of the following calendar year. For example, FY17 includes summer and fall graduates from 2016 and the spring graduates of 2017.
- Please note the axis scale range when considering graphs. It may change from campus to campus.
- Previous year's tables may differ because tables in the report have been changed from the use of running averages to 3-, 5-, and 10-year averages.
- This report includes a 10-year average as related to FY 2017.
- Source for this report is the printed Completions Report.

Technical Notes for Use with the Report:

Footnotes

- Footnotes are of the utmost importance in reading tables in the appendix.

Name Changes

- If a program name changes, the report history is changed to reflect the new name and is footnoted.
- If a degree name or description is changed, the report history is changed to the new description and is footnoted.
- If a department name changes, the report history is changed to the new description and NO footnotes are made.
- If a school or college changes, the report history is changed to the new description and NO footnotes are made.

Program Moves

- If a program moves to another department or school, the data are reported as is – that is, report history is not changed and new data are reported in the new department. A new footnote is added, i.e., program is moving. Eventually – when there are no more degrees for the old department, the old department is hidden in the report.
- If a program moves to another school or college, the data are reported as is – that is, report history is not changed and new data are reported in the new school or college. A footnote is added, i.e., program is moving. Eventually – when there are no more degrees for the old program, the former program is hidden in the report.

Figure 1.0: Rate of Change in Total Degrees & Certificates Awarded for the University of Missouri System, since 2008

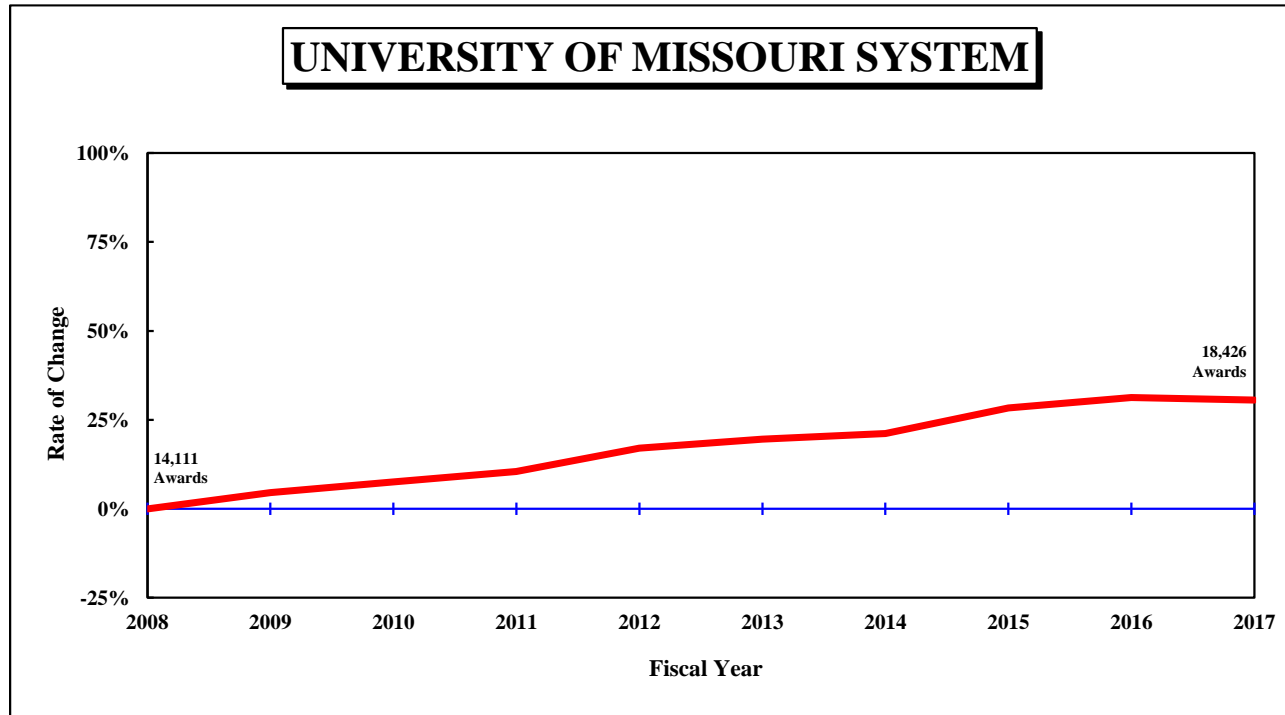


Table 1.0: Degrees and Certificates Awarded for the University of Missouri System, July 1, 2007 through June 30, 2017

DEGREE	FY 2008	FY 2009	FY 2010	FY 2011	FY 2012	FY 2013	FY 2014	FY 2015	FY 2016	FY 2017	3-Year Average	5-Year Average	10-Year Average	Change in FY17 relative to the 10-Year Avg.
UNIVERSITY OF MISSOURI SYSTEM														
Undergrad. Certificate	3	2	1	4	2	2	23	55	44	56	51.7	36.0	19.2	192%
Bachelors	8,994	9,289	9,604	9,699	10,317	10,543	10,733	11,360	11,654	11,546	11,520.0	11,167.2	10,373.9	11%
Graduate Certificate	321	438	520	539	623	781	740	780	839	869	829.3	801.8	645.0	35%
First Professional	749	763	800	818	790	847	837	876	833	829	846.0	844.4	814.2	2%
Masters	3,432	3,620	3,608	3,870	4,069	3,919	4,013	4,204	4,330	4,217	4,250.3	4,136.6	3,928.2	7%
Education Specialist	102	148	123	100	104	115	113	122	100	93	105.0	108.6	112.0	-17%
Doctorate	510	487	519	557	610	660	640	712	720	816	749.3	709.6	623.1	31%
Total, All Awards	14,111	14,747	15,175	15,587	16,515	16,867	17,099	18,109	18,520	18,426	18,351.7	17,804.2	16,515.6	12%

Figure 1.1: Rate of Change in Total Degrees & Certificates Awarded at the University of Missouri–Columbia, since 2008

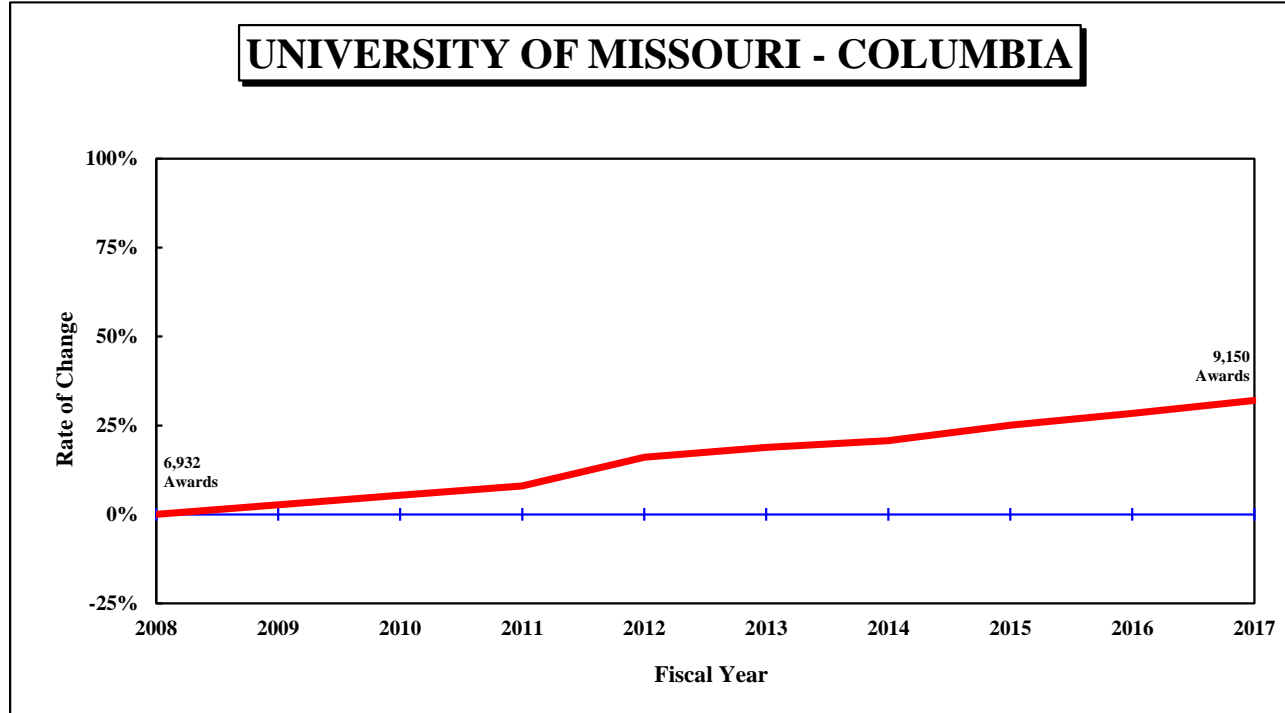


Table 1.1: Degrees and Certificates Awarded at the University of Missouri–Columbia, July 1, 2007 through June 30, 2017

DEGREE	FY 2008	FY 2009	FY 2010	FY 2011	FY 2012	FY 2013	FY 2014	FY 2015	FY 2016	FY 2017	3-Year Average	5-Year Average	10-Year Average	Change in FY17 relative to the 10-Year Avg.
UNIVERSITY OF MISSOURI - COLUMBIA														
Bachelors	4,779	4,855	4,963	5,087	5,528	5,692	5,769	5,995	6,283	6,331	6,203.0	6,014.0	5,528.2	15%
Graduate Certificate	69	88	142	162	179	225	226	239	225	266	243.3	236.2	182.1	46%
First Professional	303	307	304	306	299	332	339	346	308	313	322.3	327.6	315.7	-1%
Masters	1,421	1,506	1,515	1,513	1,631	1,515	1,580	1,571	1,619	1,684	1,624.7	1,593.8	1,555.5	8%
Education Specialist	34	57	59	53	43	63	65	82	51	56	63.0	63.4	56.3	-1%
Doctorate	326	306	322	365	367	411	390	435	416	500	450.3	430.4	383.8	30%
Total, All Awards	6,932	7,119	7,305	7,486	8,047	8,238	8,369	8,668	8,902	9,150	8,906.7	8,665.4	8,021.6	14%

Figure 1.2: Rate of Change in Total Degrees & Certificates Awarded at the University of Missouri–Kansas City, since 2008

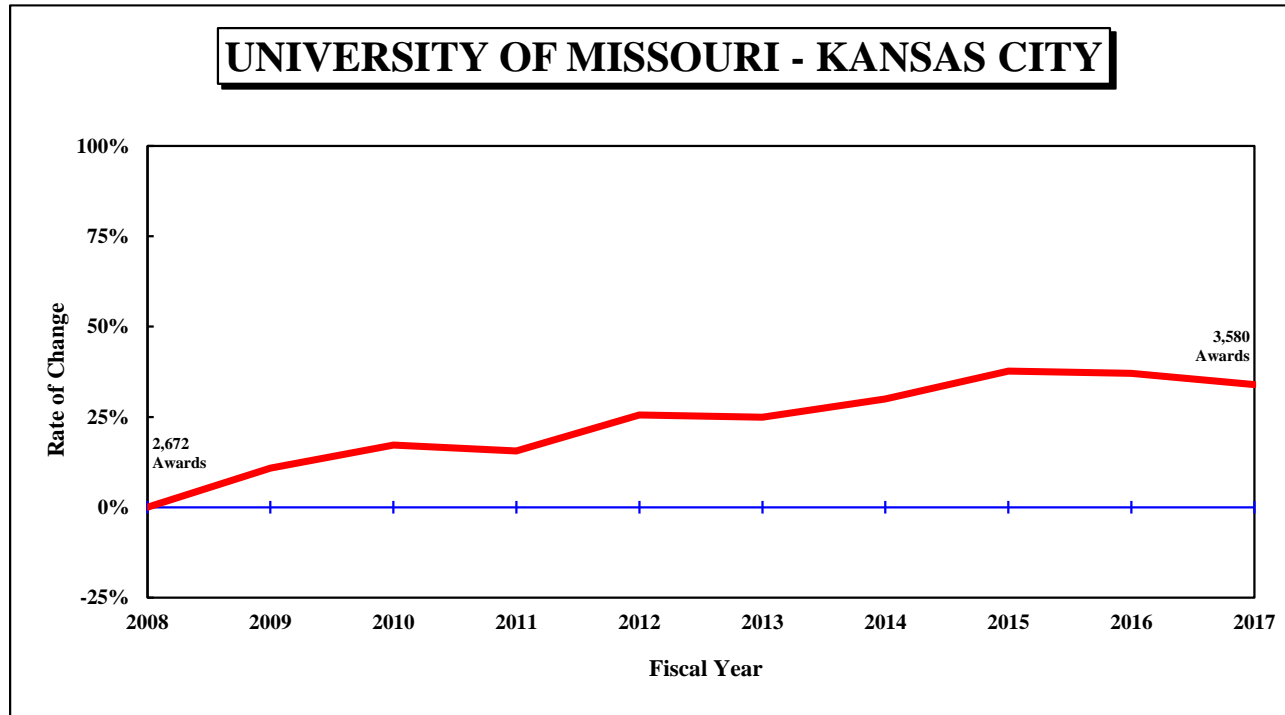


Table 1.2: Degrees and Certificates Awarded at the University of Missouri–Kansas City, July 1, 2007 through June 30, 2017

DEGREE	FY 2008	FY 2009	FY 2010	FY 2011	FY 2012	FY 2013	FY 2014	FY 2015	FY 2016	FY 2017	3-Year Average	5-Year Average	10-Year Average	Change in FY17 relative to the 10-Year Avg.
UNIVERSITY OF MISSOURI - KANSAS CITY														
Undergrad. Certificate								7	6	11	8.0	N/A	N/A	
Bachelors	1,289	1,496	1,633	1,523	1,749	1,759	1,803	1,812	1,741	1,824	1,792.3	1,787.8	1,662.9	10%
Graduate Certificate	24	20	18	24	29	33	33	50	71	48	56.3	47.0	35.0	37%
First Professional	408	412	455	468	444	475	459	489	480	473	480.7	475.2	456.3	4%
Masters	852	917	911	972	999	954	1,028	1,197	1,213	1,082	1,164.0	1,094.8	1,012.5	7%
Education Specialist	40	49	33	25	35	24	35	26	32	20	26.0	27.4	31.9	-37%
Doctorate	59	68	83	77	99	93	116	98	120	122	113.3	109.8	93.5	30%
Total, All Awards	2,672	2,962	3,133	3,089	3,355	3,338	3,474	3,679	3,663	3,580	3,640.7	3,546.8	3,294.5	9%

Figure 1.3: Rate of Change in Total Degrees & Certificates Awarded at the Missouri University of Science and Technology, since 2008

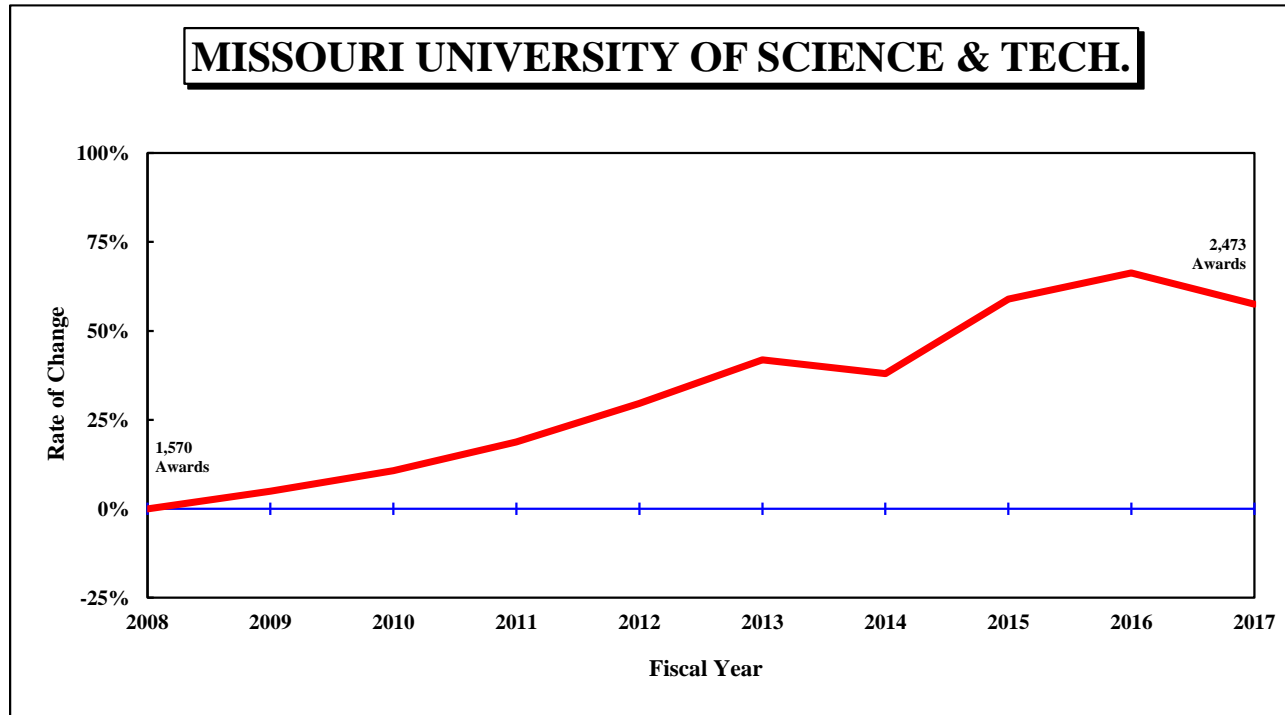


Table 1.3: Degrees and Certificates Awarded at the Missouri University of Science and Technology, July 1, 2007 through June 30, 2017

DEGREE	FY 2008	FY 2009	FY 2010	FY 2011	FY 2012	FY 2013	FY 2014	FY 2015	FY 2016	FY 2017	3-Year	<u>Average</u> 5-Year	10-Year	Change in FY17 relative to the 10-Year Avg.
MISSOURI UNIVERSITY OF SCIENCE AND TECHNOLOGY														
Undergrad. Certificate	3	2	1	4	2	0	3	14	9	8	10.3	6.8	4.6	74%
Bachelors	910	920	997	997	1,077	1,118	1,141	1,307	1,378	1,320	1,335.0	1,252.8	1,116.5	18%
Graduate Certificate	164	250	278	282	319	435	401	404	427	432	421.0	419.8	339.2	27%
Masters	430	426	411	517	567	579	551	675	688	625	662.7	623.6	546.9	14%
Doctorate	63	50	51	65	70	95	70	95	109	88	97.3	91.4	75.6	16%
Total, All Awards	1,570	1,648	1,738	1,865	2,035	2,227	2,166	2,495	2,611	2,473	2,526.3	2,394.4	2,082.8	19%

Figure 1.4: Rate of Change in Total Degrees & Certificates Awarded at the University of Missouri–St. Louis, since 2008

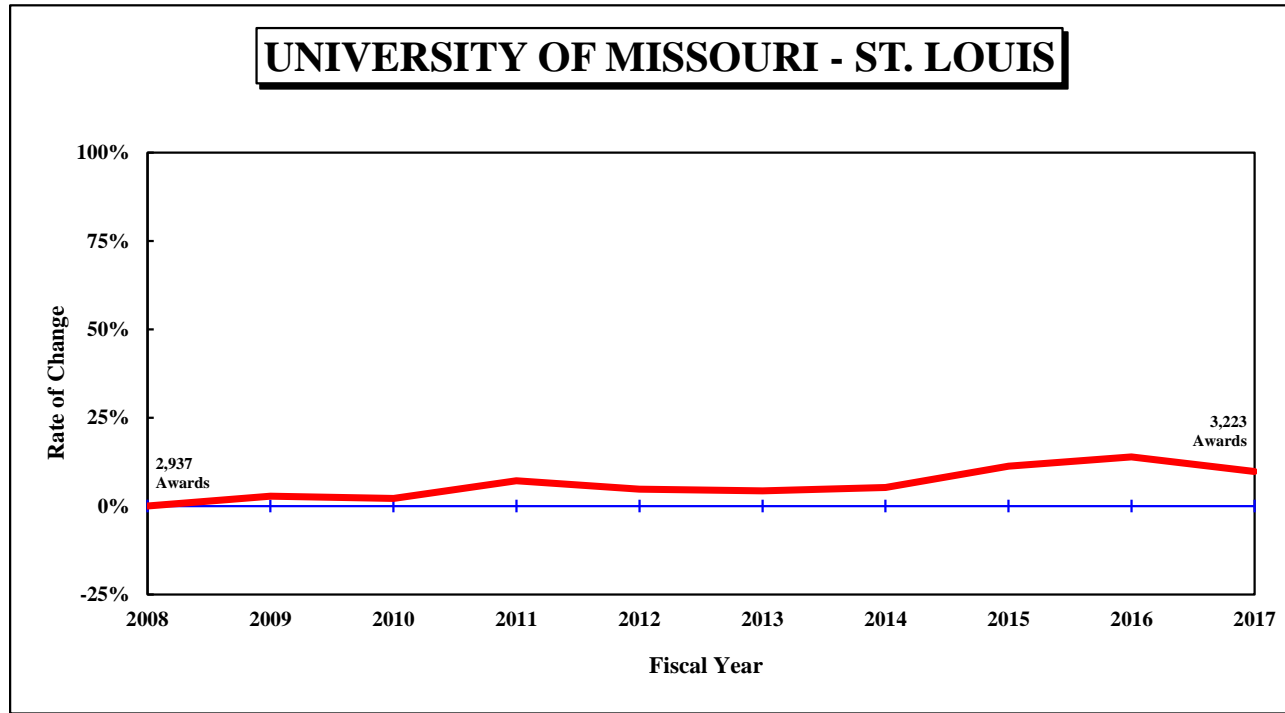


Table 1.4: Degrees and Certificates Awarded at the University of Missouri–St. Louis, July 1, 2007 through June 30, 2017

DEGREE	FY	FY	FY	FY	FY	FY	FY	FY	FY	FY	Average			Change in FY17 relative to the 10-Year Avg.
	2008	2009	2010	2011	2012	2013	2014	2015	2016	2017	3-Year	5-Year	10-Year	
UNIVERSITY OF MISSOURI - ST. LOUIS														
Undergrad. Certificate						2	20	34	29	37	33.3	24.4	N/A	
Bachelors	2,016	2,018	2,011	2,092	1,963	1,974	2,020	2,246	2,252	2,071	2,189.7	2,112.6	2,066.3	0%
Graduate Certificate	64	80	82	71	96	88	80	87	116	123	108.7	98.8	88.7	39%
First Professional	38	44	41	44	47	40	39	41	45	43	43.0	41.6	42.2	2%
Masters	729	771	771	868	872	871	854	761	810	826	799.0	824.4	813.3	2%
Education Specialist	28	42	31	22	26	28	13	14	17	17	16.0	17.8	23.8	-29%
Doctorate	62	63	63	50	74	61	64	84	75	106	88.3	78.0	70.2	51%
Total, All Awards	2,937	3,018	2,999	3,147	3,078	3,064	3,090	3,267	3,344	3,223	3,278.0	3,197.6	3,116.7	3%

Figure 2.0: Rate of Change in Total Degrees Awarded, since 2008

UNIVERSITY OF MISSOURI SYSTEM

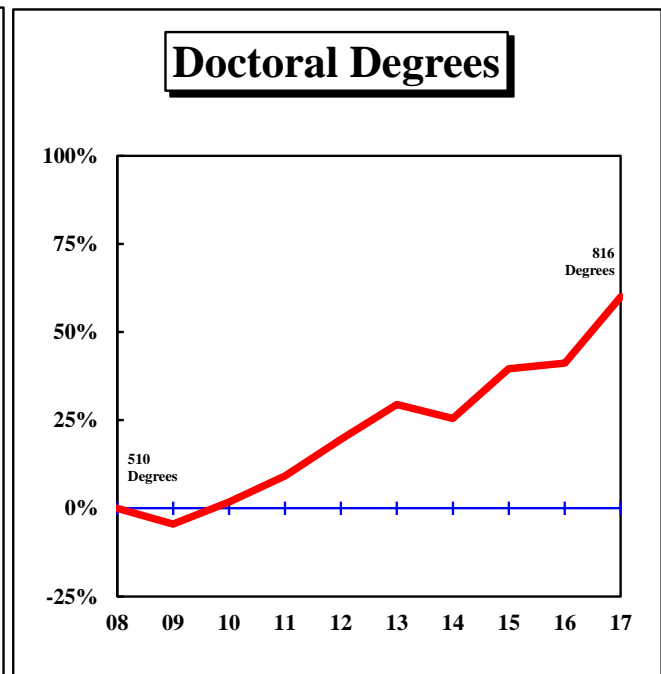
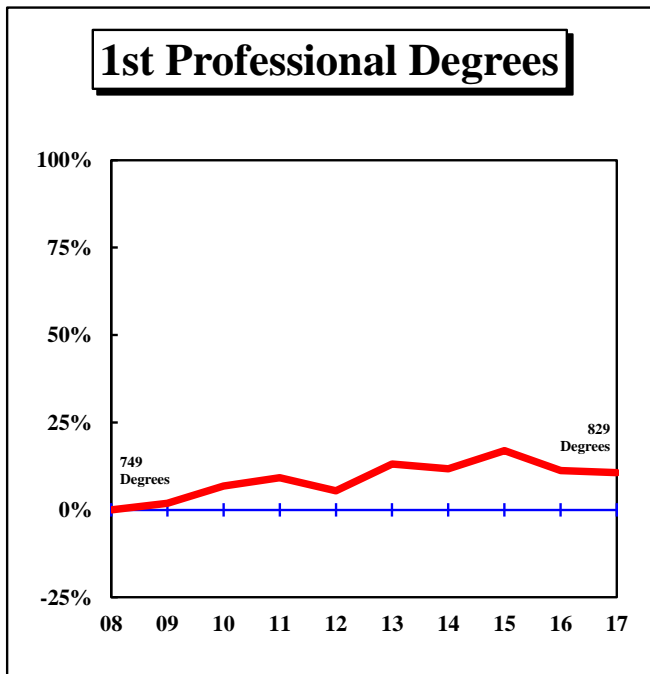
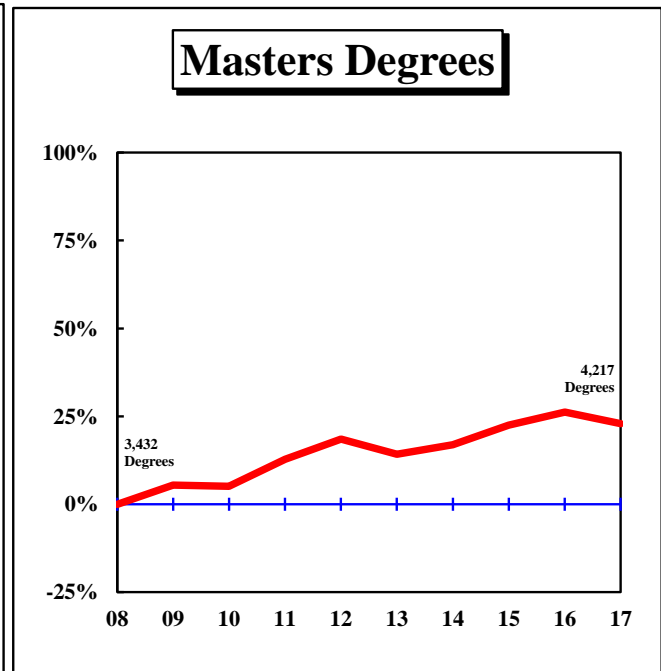
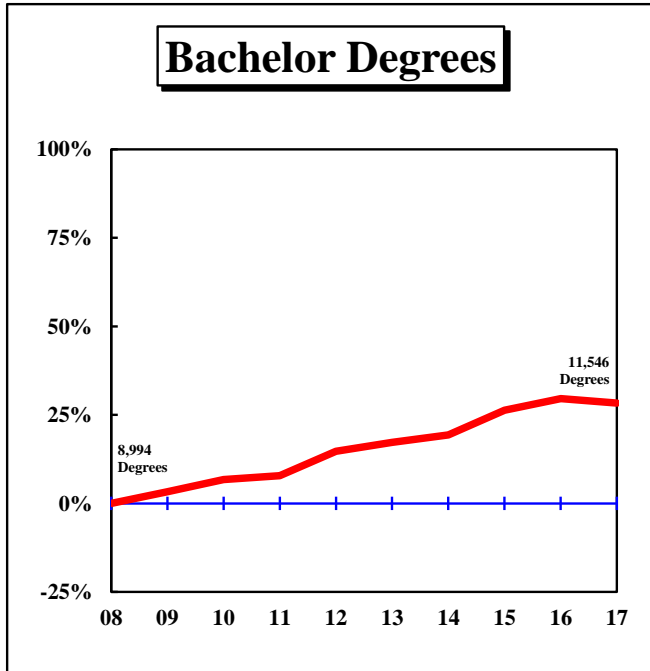


Figure 2.1: Rate of Change in Total Degrees Awarded by Campus, since 2008

UNIVERSITY OF MISSOURI-COLUMBIA

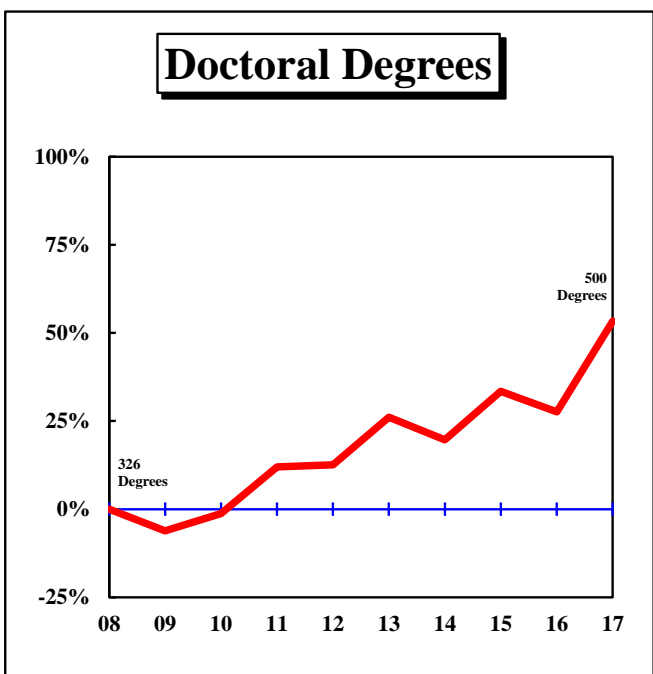
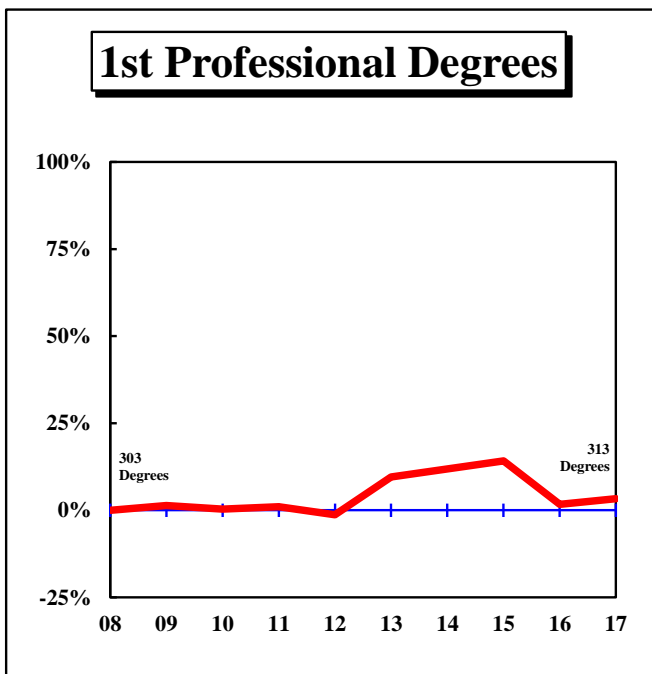
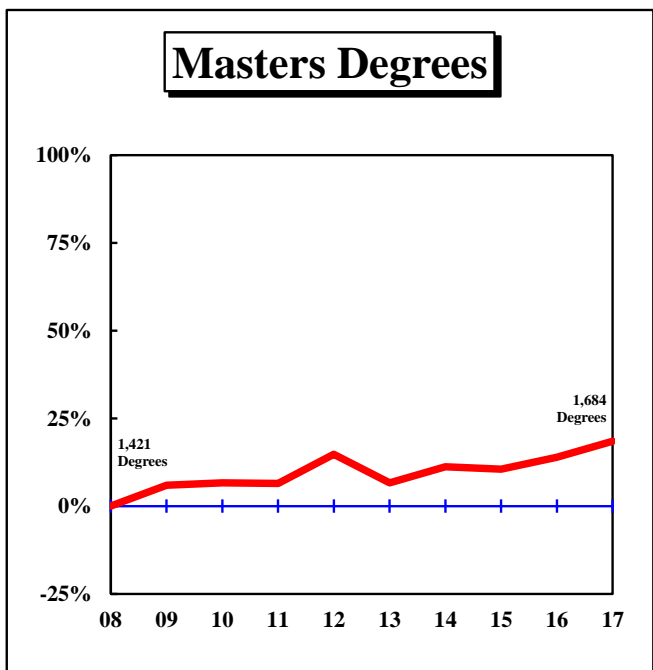
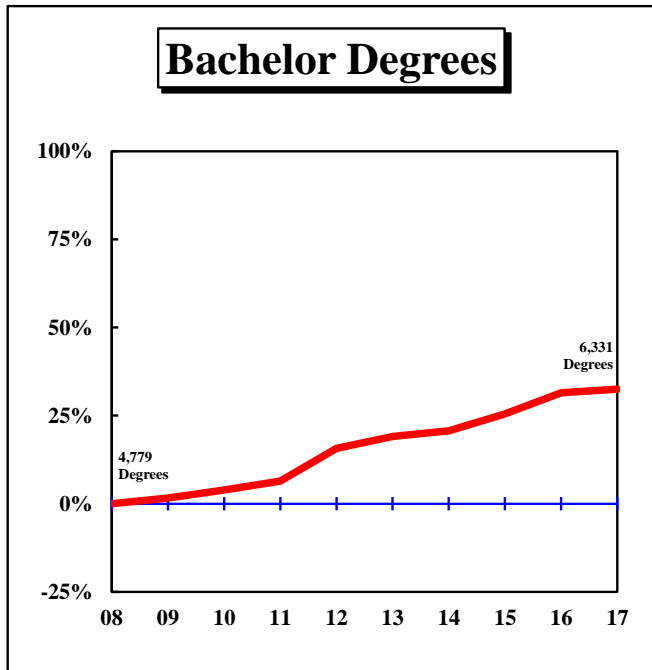


Figure 2.2: Rate of Change in Total Degrees Awarded by Campus, since 2008

UNIVERSITY OF MISSOURI-KANSAS CITY

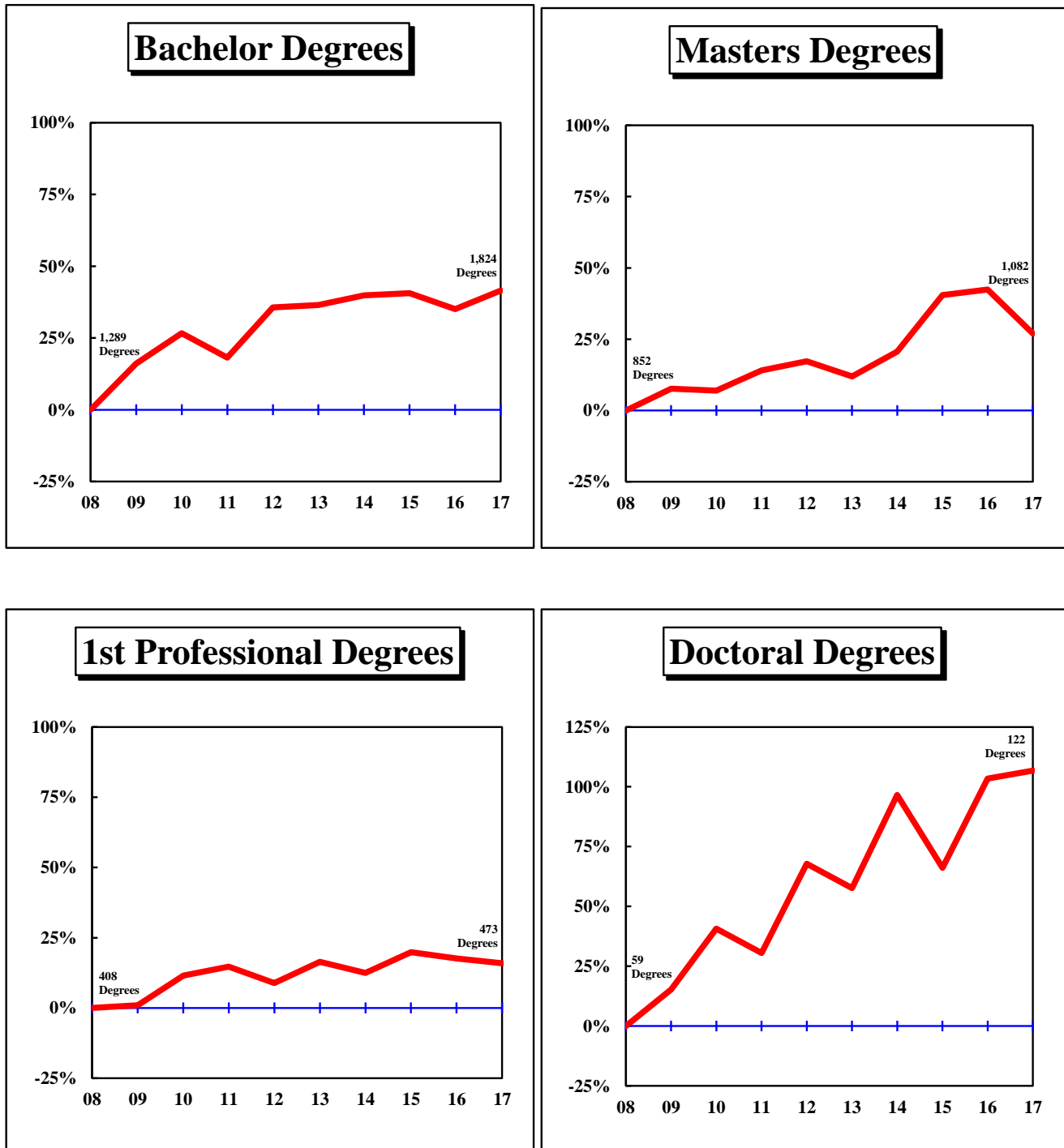


Figure 2.3: Rate of Change in Total Degrees Awarded by Campus, since 2008

MISSOURI UNIVERSITY OF SCIENCE AND TECHNOLOGY

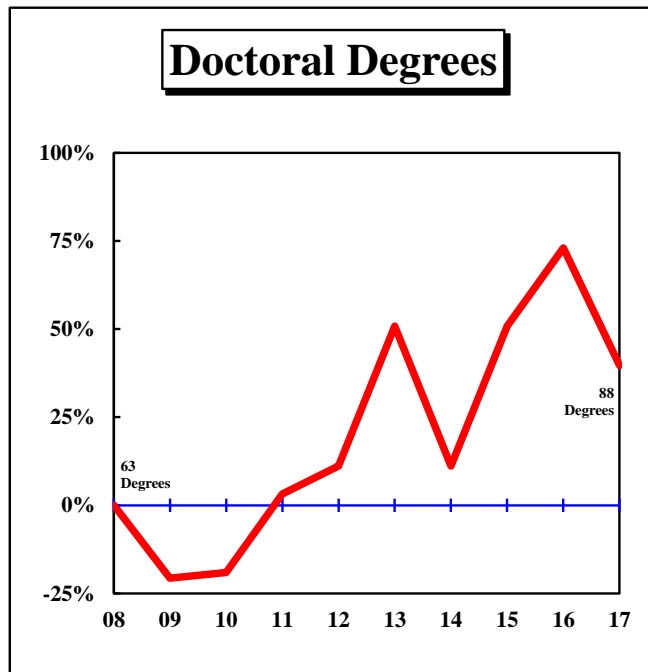
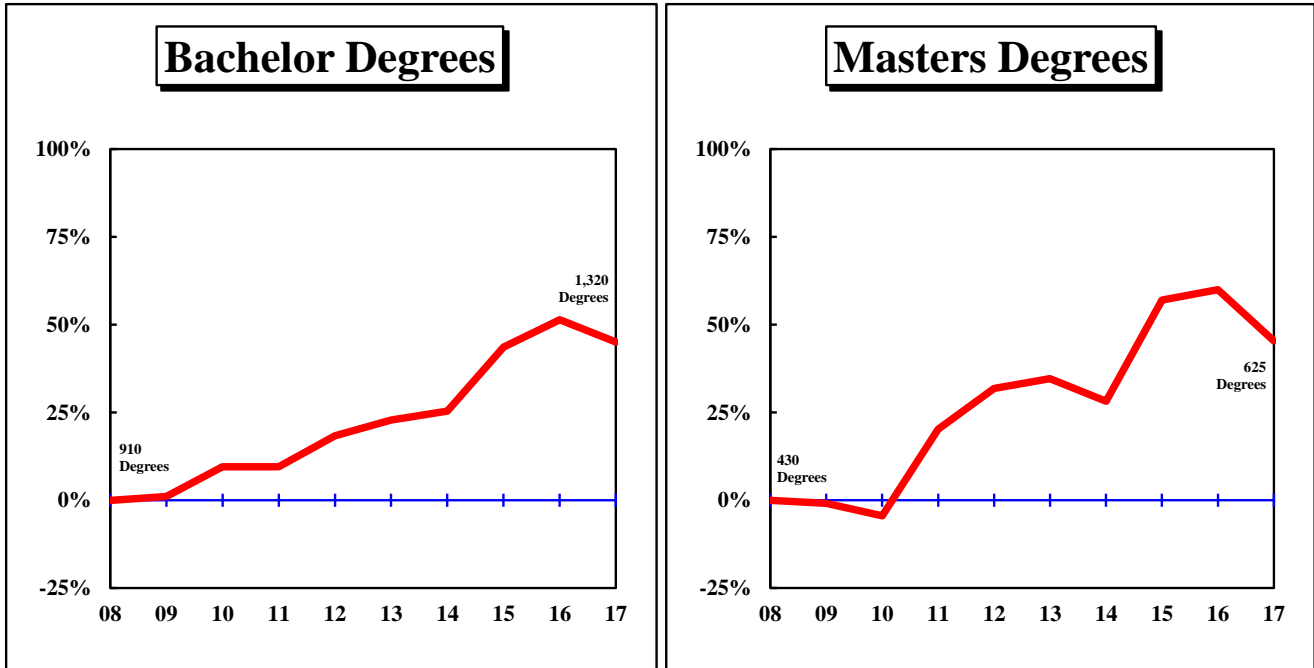


Figure 2.4: Rate of Change in Total Degrees Awarded by Campus, since 2008

UNIVERSITY OF MISSOURI–ST. LOUIS

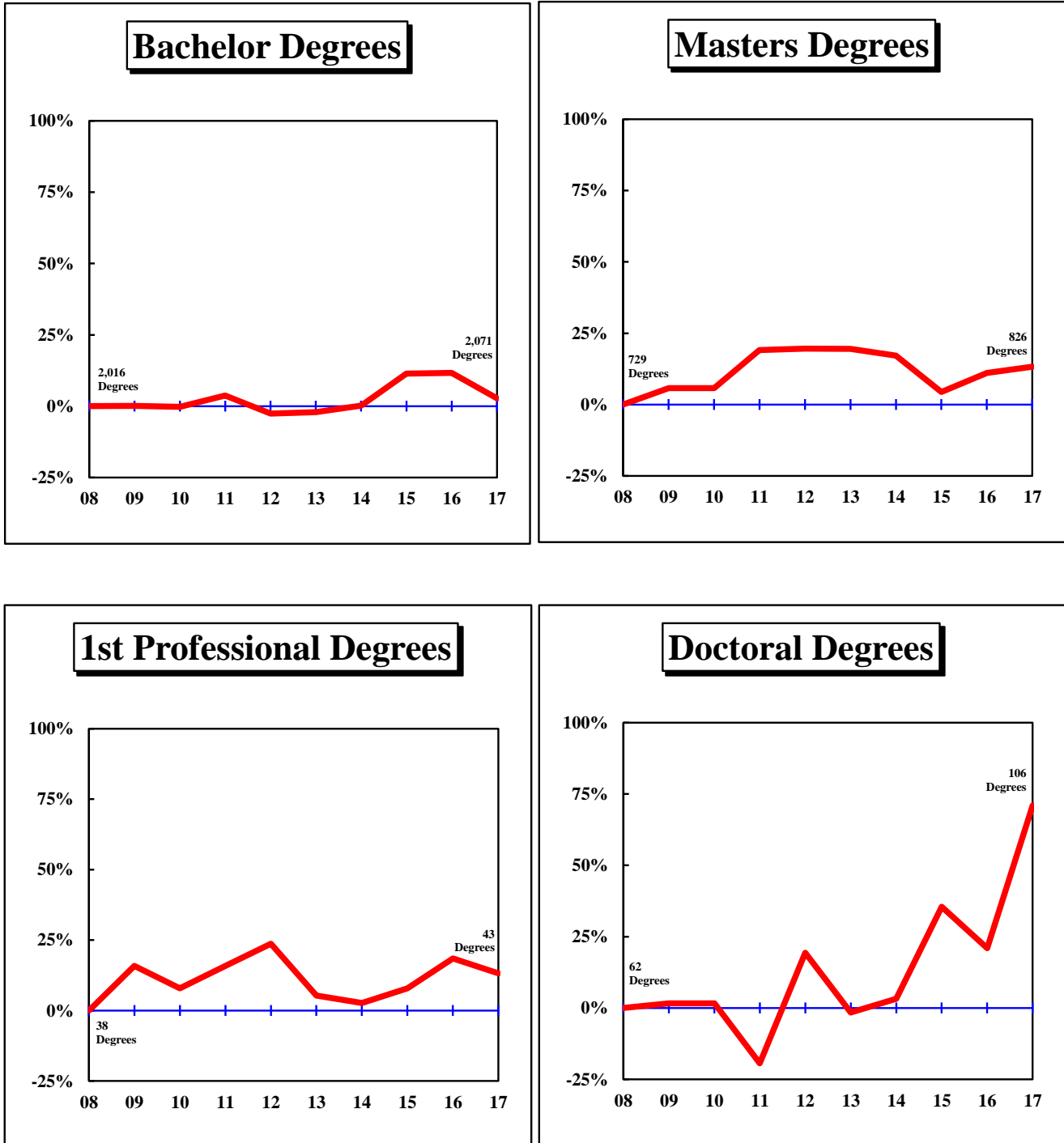


Table 2.1: Degrees and Certificates Awarded by Colleges at the University of Missouri–Columbia

COLLEGE/DEGREE	FY	FY	FY	FY	FY	FY	FY	FY	FY	FY	3-Year	Average			Change in FY17 relative to the 10-Year Avg.
	2008	2009	2010	2011	2012	2013	2014	2015	2016	2017		5-Year	10-Year		
AGRICULTURE, FOOD, AND NATURAL RESOURCES, COLLEGE OF															
Bachelors	367	391	383	400	432	491	460	491	528	529	516.0	499.8	447.2	18%	
Masters	46	51	38	45	51	44	68	38	63	47	49.3	52.0	49.1	-4%	
Doctorate	26	32	28	27	24	34	35	33	28	40	33.7	34.0	30.7	30%	
All	439	474	449	472	507	569	563	562	619	616	599.0	585.8	527.0	17%	
ARTS AND SCIENCE, COLLEGE OF															
Bachelors	1,725	1,741	1,744	1,812	1,961	2,046	1,902	1,963	1,913	1,962	1,946.0	1,957.2	1,876.9	5%	
Masters	158	176	144	176	169	168	209	197	182	179	186.0	187.0	175.8	2%	
Doctorate	108	97	104	98	119	106	113	141	124	120	128.3	120.8	113.0	6%	
All	1,991	2,014	1,992	2,086	2,249	2,320	2,224	2,301	2,219	2,261	2,260.3	2,265.0	2,165.7	4%	
BUSINESS, COLLEGE OF															
Bachelors	807	779	900	838	824	786	785	776	829	939	848.0	823.0	826.3	14%	
Grad. Certif.	30	9	15	27	23	21	24	25	19	38	27.3	25.4	23.1	65%	
Masters	214	204	237	220	217	231	229	242	222	241	235.0	233.0	225.7	7%	
Doctorate	6	6	4	6	10	8	8	5	11	6	7.3	7.6	7.0	-14%	
All	1,057	998	1,156	1,091	1,074	1,046	1,046	1,048	1,081	1,224	1,117.7	1,089.0	1,082.1	13%	
EDUCATION, COLLEGE OF															
Bachelors	249	246	239	246	274	284	305	280	307	227	271.3	280.6	265.7	-15%	
Masters	450	485	502	495	532	464	418	464	457	480	467.0	456.6	474.7	1%	
Ed. Specialist	34	57	59	53	43	63	65	82	51	56	63.0	63.4	56.3	-1%	
Doctorate	87	87	74	84	79	117	73	83	74	102	86.3	89.8	86.0	19%	
All	820	875	874	878	928	928	861	909	889	865	887.7	890.4	882.7	-2%	
ENGINEERING, COLLEGE OF															
Bachelors	368	386	398	422	518	472	490	596	693	629	639.3	576.0	497.2	27%	
Masters	93	90	78	109	100	120	131	165	136	157	152.7	141.8	117.9	33%	
Doctorate	36	24	24	44	32	32	43	37	36	46	39.7	38.8	35.4	30%	
All	497	500	500	575	650	624	664	798	865	832	831.7	756.6	650.5	28%	
HEALTH PROFESSIONS, SCHOOL OF															
Bachelors	153	155	176	242	345	426	549	600	702	730	677.3	601.4	407.8	79%	
Masters	96	82	48	40	55	51	58	60	54	66	60.0	57.8	61.0	8%	
Doctorate	0	0	36	43	38	45	43	44	45	58	49.0	47.0	35.2	65%	
All	249	237	260	325	438	522	650	704	801	854	786.3	706.2	504.0	69%	

Table 2.1: Degrees and Certificates Awarded by Colleges at the University of Missouri–Columbia (continued)

COLLEGE/DEGREE	FY	FY	FY	FY	FY	FY	FY	FY	FY	FY	3-Year	Average			Change in FY17 relative to the 10-Year Avg.
	2008	2009	2010	2011	2012	2013	2014	2015	2016	2017		5-Year	10-Year		
HUMAN ENVIRONMENTAL SCIENCES, COLLEGE OF															
Bachelors	278	298	274	275	279	309	318	269	282	336	295.7	302.8	291.8	15%	
Masters	18	35	17	30	34	28	26	41	38	36	38.3	33.8	30.3	19%	
Doctorate	5	9	8	12	7	9	11	20	12	13	15.0	13.0	10.6	23%	
All	301	342	299	317	320	346	355	330	332	385	349.0	349.6	332.7	16%	
JOURNALISM, SCHOOL OF															
Bachelors	475	520	521	510	534	504	520	483	549	545	525.7	520.2	516.1	6%	
Masters	91	107	112	88	111	73	91	67	103	80	83.3	82.8	92.3	-13%	
Doctorate	10	9	8	12	10	8	6	8	7	5	6.7	6.8	8.3	-40%	
All	576	636	641	610	655	585	617	558	659	630	615.7	609.8	616.7	2%	
LAW, SCHOOL OF															
Grad. Certif.	21	16	37	39	26	41	25	21	20	16	19.0	24.6	26.2	-39%	
First Profes.	148	152	141	144	142	133	132	132	114	101	115.7	122.4	133.9	-25%	
Masters	15	13	7	19	8	14	8	12	7	6	8.3	9.4	10.9	-45%	
All	184	181	185	202	176	188	165	165	141	123	143.0	156.4	171.0	-28%	
MEDICINE, SCHOOL OF															
First Profes.	89	85	99	93	87	98	97	99	87	99	95.0	96.0	93.3	6%	
Masters	32	36	41	48	51	42	56	43	65	57	55.0	52.6	47.1	21%	
Doctorate	14	10	11	7	14	13	5	9	8	10	9.0	9.0	10.1	-1%	
All	135	131	151	148	152	153	158	151	160	166	159.0	157.6	150.5	10%	
NATURAL RESOURCES, SCHOOL OF															
Bachelors	113	115	96	107	113	121	190	265	232	199	232.0	201.4	155.1	28%	
Masters	18	20	21	26	28	22	30	21	40	43	34.7	31.2	26.9	60%	
Doctorate	10	7	5	7	8	10	3	5	7	13	8.3	7.6	7.5	73%	
All	141	142	122	140	149	153	223	291	279	255	275.0	240.2	189.5	35%	
NURSING, SCHOOL OF															
Bachelors	187	190	190	193	211	211	217	232	198	203	211.0	212.2	203.2	0%	
Masters	40	50	60	43	43	42	36	29	20	11	20.0	27.6	37.4	-71%	
Doctorate	4	5	3	4	4	2	25	31	38	57	42.0	30.6	17.3	229%	
All	231	245	253	240	258	255	278	292	256	271	273.0	270.4	257.9	5%	

Table 2.1: Degrees and Certificates Awarded by Colleges at the University of Missouri–Columbia (continued)

COLLEGE/DEGREE	FY 2008	FY 2009	FY 2010	FY 2011	FY 2012	FY 2013	FY 2014	FY 2015	FY 2016	FY 2017	3-Year	Average 5-Year	10-Year	Change in FY17 relative to the 10-Year Avg.
PUBLIC AFFAIRS, SCHOOL OF														
Masters							60	52	63	86	67.0	N/A	N/A	
Doctorate							2	2	1	3	2.0	N/A	N/A	
All							62	54	64	89	69.0	N/A	N/A	
SOCIAL WORK, SCHOOL OF														
Bachelors	57	34	42	42	37	42	33	40	50	32	40.7	39.4	40.9	-22%
Masters	58	64	129	51	97	87	70	71	76	91	79.3	79.0	79.4	15%
Doctorate	4	9	4	3	2	1	3	2	3	2	2.3	2.2	3.3	-39%
All	119	107	175	96	136	130	106	113	129	125	122.3	120.6	123.6	1%
VETERINARY MEDICINE, COLLEGE OF														
First Profes.	66	70	64	69	70	101	110	115	107	113	111.7	109.2	88.5	28%
Masters	11	8	7	8	9	5	9	5	8	10	7.7	7.4	8.0	25%
Doctorate	2	2	1	5	2	2	3	0	2	5	2.3	2.4	2.4	108%
All	79	80	72	82	81	108	122	120	117	128	121.7	119.0	98.9	29%
GRADUATE STUDIES														
Grad. Certif.	18	63	90	96	130	163	177	193	186	212	197.0	186.2	132.8	60%
Masters	81	85	74	115	126	124	81	64	85	94	81.0	89.6	92.9	1%
Doctorate	14	9	12	13	18	24	17	15	20	20	18.3	19.2	16.2	23%
All	113	157	176	224	274	311	275	272	291	326	296.3	295.0	241.9	35%

Table 2.2: Degrees and Certificates Awarded by Colleges at the University of Missouri–Kansas City

COLLEGE/DEGREE	FY	FY	FY	FY	FY	FY	FY	FY	FY	FY	3-Year	<u>Average</u>		Change in FY17 relative to the 10-Year Avg.	
	2008	2009	2010	2011	2012	2013	2014	2015	2016	2017		5-Year	10-Year		
ARTS AND SCIENCES, COLLEGE OF															
U-Grad. Certif.									7	6	11	8.0	N/A	N/A	
Bachelors	713	829	931	813	934	877	895	844	766	872	827.3	850.8	847.4	3%	
Grad. Certif.	0	0	0	0	1	1	3	6	15	2	7.7	5.4	2.8	-29%	
Masters	198	187	173	210	252	184	227	228	211	189	209.3	207.8	205.9	-8%	
Doctorate	2	4	4	2	3	2	7	3	3	5	3.7	4.0	3.5	43%	
All	913	1,020	1,108	1,025	1,190	1,064	1,132	1,088	1,001	1,079	1,056.0	1,072.8	1,062.0	2%	
BIOLOGICAL SCIENCES, SCHOOL OF															
Bachelors	58	61	84	71	95	101	99	86	87	101	91.3	94.8	84.3	20%	
Masters	18	20	23	21	26	26	24	22	12	12	15.3	19.2	20.4	-41%	
All	76	81	107	92	121	127	123	108	99	113	106.7	114.0	104.7	8%	
COMPUTING AND ENGINEERING, SCHOOL OF															
Bachelors	80	86	95	82	103	118	105	124	163	178	155.0	137.6	113.4	57%	
Grad. Certif.						1	2	3	2	1	2.0	1.8	N/A		
Masters	112	144	135	194	121	122	124	274	446	391	370.3	271.4	206.3	90%	
All	192	230	230	276	224	241	231	401	611	570	527.3	410.8	320.6	78%	
DENTISTRY, SCHOOL OF															
Bachelors	28	27	31	34	35	36	30	34	30	35	33.0	33.0	32.0	9%	
Grad. Certif.	22	17	17	17	17	17	17	17	17	17	17.0	17.0	17.5	-3%	
First Profes.	100	102	96	98	99	106	103	104	105	105	104.7	104.6	101.8	3%	
Masters	4	9	7	9	9	10	4	7	6	5	6.0	6.4	7.0	-29%	
All	154	155	151	158	160	169	154	162	158	162	160.7	161.0	158.3	2%	
EDUCATION, SCHOOL OF															
Bachelors	98	118	116	107	113	108	112	87	66	53	68.7	85.2	97.8	-46%	
Grad. Certif.					0	0	3	4	18	2	8.0	5.4	N/A		
Masters	147	184	152	131	144	156	152	175	152	122	149.7	151.4	151.5	-19%	
Ed. Specialist	40	49	33	25	35	24	35	26	32	20	26.0	27.4	31.9	-37%	
Doctorate	10	9	5	4	13	9	21	11	13	8	10.7	12.4	10.3	-22%	
All	295	360	306	267	305	297	323	303	281	205	263.0	281.8	294.2	-30%	

Table 2.2: Degrees and Certificates Awarded by Colleges at the University of Missouri–Kansas City (continued)

COLLEGE/DEGREE	FY	FY	FY	FY	FY	FY	FY	FY	FY	FY	Average	Change in FY17 relative to the 10-Year Avg.		
	2008	2009	2010	2011	2012	2013	2014	2015	2016	2017			3-Year	5-Year
GRADUATE STUDIES, SCHOOL OF														
Grad. Certif.	0	1	0	2	5	2	2	5	9	9	7.7	5.4	3.5	157%
Doctorate	32	24	32	31	42	45	55	47	48	47	47.3	48.4	40.3	17%
All	32	25	32	33	47	47	57	52	57	56	55.0	53.8	43.8	28%
LAW, SCHOOL OF														
First Profes.	150	153	156	156	150	159	141	141	159	141	147.0	148.2	150.6	-6%
Masters	22	32	32	30	18	33	29	29	25	21	25.0	27.4	27.1	-23%
All	172	185	188	186	168	192	170	170	184	162	172.0	175.6	177.7	-9%
MANAGEMENT, SCHOOL OF														
Bachelors	178	195	192	207	228	231	276	315	307	303	308.3	286.4	243.2	25%
Grad. Certif.						0	0	2	3	3	2.7	1.6	N/A	
Masters	228	240	254	257	276	263	292	288	248	237	257.7	265.6	258.3	-8%
Doctorate					0	1	1	0	2	2	1.3	1.2	N/A	
All	406	435	446	464	504	495	569	605	560	545	570.0	554.8	502.9	8%
MEDICINE, SCHOOL OF														
Grad. Certif.		0	0	0	1	5	0	6	6	11	7.7	5.6	N/A	
First Profes.	86	87	92	101	89	88	90	119	94	103	105.3	98.8	94.9	9%
Masters	0	0	4	4	7	12	21	22	37	46	35.0	27.6	15.3	201%
All	86	87	96	105	97	105	111	147	137	160	148.0	132.0	113.1	41%
MUSIC AND DANCE, CONSERVATORY OF														
Bachelors	49	70	70	47	65	64	43	62	52	56	56.7	55.4	57.8	-3%
Grad. Certif.	2	2	1	5	5	7	6	7	1	3	3.7	4.8	3.9	-23%
Masters	47	43	56	38	39	42	25	36	49	27	37.3	35.8	40.2	-33%
Doctorate	12	21	20	21	16	21	18	14	26	20	20.0	19.8	18.9	6%
All	110	136	147	111	125	134	92	119	128	106	117.7	115.8	120.8	-12%
NURSING AND HEALTH STUDIES, SCHOOL OF														
Bachelors	80	102	107	148	167	217	239	260	270	226	252.0	242.4	181.6	24%
Masters	75	57	74	78	107	106	130	116	27	32	58.3	82.2	80.2	-60%
Doctorate	3	10	22	19	25	15	14	23	28	40	30.3	24.0	19.9	101%
All	158	169	203	245	299	338	383	399	325	298	340.7	348.6	281.7	6%

Table 2.2: Degrees and Certificates Awarded by Colleges at the University of Missouri–Kansas City (continued)

COLLEGE/DEGREE	FY	FY	FY	FY	FY	FY	FY	FY	FY	FY	3-Year	<u>Average</u>			Change in FY17 relative to the 10-Year Avg.
	2008	2009	2010	2011	2012	2013	2014	2015	2016	2017		5-Year	10-Year		
PHARMACY, SCHOOL OF															
Bachelors	5	8	7	14	9	7	4				N/A	N/A	N/A		
First Profes.	72	70	111	113	106	122	125	125	122	124	123.7	123.6	109.0	14%	
Masters	1	1	1	0	0						N/A	N/A	N/A		
All	78	79	119	127	115	129	129	125	122	124	123.7	125.8	114.7	8%	

UM-IR/RS 8/17

Table 2.3: Degrees and Certificates Awarded by Colleges at the Missouri University of Science and Technology

COLLEGE/DEGREE	FY	FY	FY	FY	FY	FY	FY	FY	FY	FY	Average	Change in FY17 relative to the 10-Year Avg.	
	2008	2009	2010	2011	2012	2013	2014	2015	2016	2017			3-Year
ARTS, SCIENCES, AND BUSINESS, COLLEGE OF													
Bachelors								292	287	259	279.3	N/A	N/A
Grad. Certif.								39	43	62	48.0	N/A	N/A
Masters								88	90	80	86.0	N/A	N/A
Doctorate								16	24	17	19.0	N/A	N/A
All								435	444	418	432.3	N/A	N/A
ENGINEERING AND COMPUTING, COLLEGE OF													
U-Grad. Certif.								14	9	8	10.3	N/A	N/A
Bachelors								1,015	1,091	1,061	1,055.7	N/A	N/A
Grad. Certif.								365	384	370	373.0	N/A	N/A
Masters								587	598	545	576.7	N/A	N/A
Doctorate								79	85	71	78.3	N/A	N/A
All								2,060	2,167	2,055	2,094.0	N/A	N/A

In FY 2008, Missouri University of Science and Technology (formally University of Missouri-Rolla) eliminated the positions of College/School Dean.
 In FY 2015, the positions of College/School Dean were reestablished.

UM-IR/RS 8/17

Table 2.4: Degrees and Certificates Awarded by Colleges at the University of Missouri–St. Louis

COLLEGE/DEGREE	FY	FY	FY	FY	FY	FY	FY	FY	FY	FY	3-Year	Average			Change in FY17 relative to the 10-Year Avg.
	2008	2009	2010	2011	2012	2013	2014	2015	2016	2017		5-Year	10-Year		
ARTS AND SCIENCES, COLLEGE OF															
U-Grad. Certif.						2	20	33	29	36	32.7	24.0	N/A		
Bachelors	734	749	763	772	763	791	792	913	924	927	921.3	869.4	812.8	14%	
Grad. Certif.	18	30	35	20	30	27	9	23	15	17	18.3	18.2	22.4	-24%	
Masters	214	215	241	241	243	237	210	199	196	181	192.0	204.6	217.7	-17%	
Doctorate	24	34	35	24	33	29	36	32	29	35	32.0	32.2	31.1	13%	
All	990	1,028	1,074	1,057	1,069	1,086	1,067	1,200	1,193	1,196	1,196.3	1,148.4	1,096.0	9%	
BUSINESS ADMINISTRATION, COLLEGE OF															
U-Grad. Certif.									0	1	N/A	N/A	N/A		
Bachelors	598	573	545	579	505	440	507	516	524	523	521.0	502.0	531.0	-2%	
Grad. Certif.	18	12	11	13	19	7	16	20	29	35	28.0	21.4	18.0	94%	
Masters	163	210	162	171	204	189	185	169	174	226	189.7	188.6	185.3	22%	
Doctorate	1	0	2	1	2	0	0	8	3	1	4.0	2.4	1.8	-44%	
All	780	795	720	764	730	636	708	713	730	786	743.0	714.6	736.2	7%	
EDUCATION, COLLEGE OF															
Bachelors	230	271	229	256	223	234	205	198	187	212	199.0	207.2	224.5	-6%	
Grad. Certif.	1	4	5	10	21	21	25	23	36	38	32.3	28.6	18.4	107%	
Masters	255	262	287	340	301	336	370	308	323	282	304.3	323.8	306.4	-8%	
Ed. Specialist	28	42	31	22	26	28	13	14	17	17	16.0	17.8	23.8	-29%	
Doctorate	27	27	24	21	33	24	21	34	38	62	44.7	35.8	31.1	99%	
All	541	606	576	649	604	643	634	577	601	611	596.3	613.2	604.2	1%	
FINE ARTS AND COMMUNICATION, COLLEGE OF															
U-Grad. Certif.						0	0	1	0		N/A	N/A	N/A		
Bachelors	210	188	214	223	207	225	218	247	241		N/A	N/A	N/A		
Masters	26	14	22	17	28	4	14	12	13		N/A	N/A	N/A		
All	236	202	236	240	235	229	232	260	254		N/A	N/A	N/A		
NURSING, COLLEGE OF															
Bachelors	186	181	200	201	206	224	246	284	253	250	262.3	251.4	223.1	12%	
Grad. Certif.	5	1	1	4	2	2	4	2	1	2	1.7	2.2	2.4	-17%	
Masters	51	43	41	72	63	79	52	55	53	67	58.3	61.2	57.6	16%	
Doctorate	9	2	2	4	6	7	7	9	5	8	7.3	7.2	5.9	36%	
All	251	227	244	281	277	312	309	350	312	327	329.7	322.0	289.0	13%	

Table 2.4: Degrees and Certificates Awarded by Colleges at the University of Missouri–St. Louis (continued)

COLLEGE/DEGREE	FY 2008	FY 2009	FY 2010	FY 2011	FY 2012	FY 2013	FY 2014	FY 2015	FY 2016	FY 2017	3-Year	<u>Average</u> 5-Year	10-Year	Change in FY17 relative to the 10-Year Avg.
OPTOMETRY, COLLEGE OF														
First Profes.	38	44	41	44	47	40	39	41	45	43	43.0	41.6	42.2	2%
Masters	0	1	2	1	0	1	1				N/A	N/A	N/A	
Doctorate	1	0	0	0	0	1	0	1			N/A	N/A	N/A	
All	39	45	43	45	47	42	40	42	45	43	43.3	42.4	43.1	0%
SOCIAL WORK, SCHOOL OF														
Bachelors									25	76	N/A	N/A	N/A	
Masters									33	54	N/A	N/A	N/A	
All									58	130	N/A	N/A	N/A	
ENGINEERING PROGRAM														
Bachelors	46	52	56	58	58	58	51	88	97	83	89.3	75.4	64.7	28%
GRADUATE SCHOOL														
Bachelors	12	4	4	3	1	2	1	0	1	0	0.3	0.8	2.8	-100%
Grad. Certif.	22	33	30	24	24	31	26	19	35	31	28.3	28.4	27.5	13%
Masters	20	26	16	26	33	25	22	18	18	16	17.3	19.8	22.0	-27%
All	54	63	50	53	58	58	49	37	54	47	46.0	49.0	52.3	-10%

In FY 2016, Social Work moved from Arts & Sciences.

In FY 2017, Fine Arts & Communication moved to Arts & Sciences.

UM-IR/RS 8/17